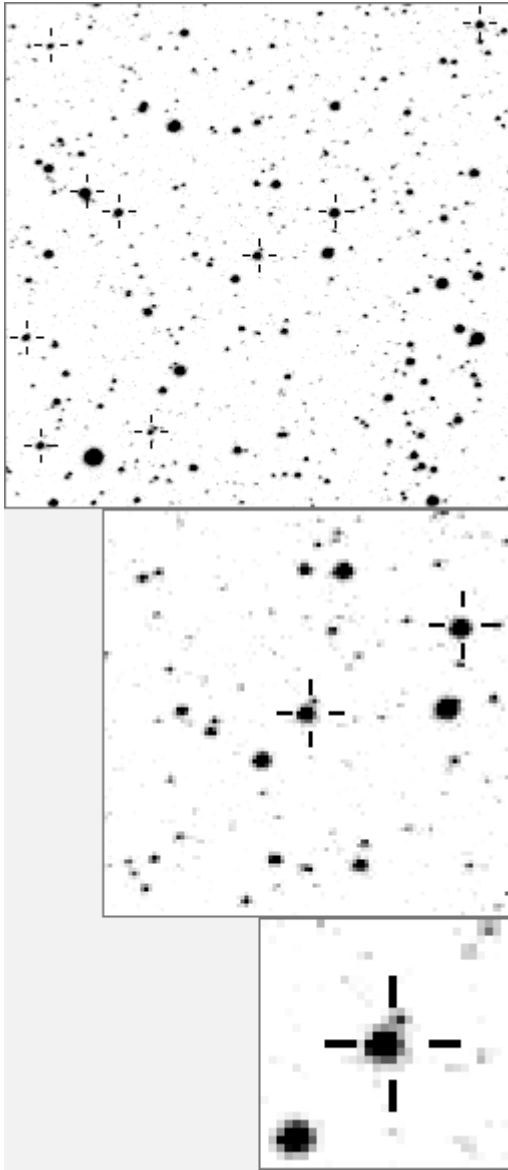


a03542



variables & brighter stars			
. j	O	3542	v
. m	a	47	
.	b	473	
. . . . d	c	978	
.	d	998	
. . g	e	1010	
. . . i h	f	1232	
. O . f	g	1288	v
. e .	h	2121	v
l b	i	3879	v
.	j	4921	v
.	k	5950	v
. . . . n	l	7031	v
. k a	m	10766	v
. c	n	14177	v

.	O	3542	v
.	a	1232	
. j f c	b	2121	v
.	c	3489	
. b .	d	4812	
.	e	8881	
. n	f	11908	
. . h . . . O . . . a . . .	g	12151	
. . . . i	h	14679	
. . . . d m	i	16040	
.	j	19195	
.	k	23378	
. l g	l	23564	
. e	m	24447	
. k	n	24813	

Bitmap sizes are 251, 101 and 31 pixels square, South up. The keys to the right refer to the 1st two bitmaps. The numbers in the key are those in my catalogue 'starlistA'. Stars marked with a cross have been found to be variable.

Data and comments on star a03542

SWid: a03542 / USNO id: 1362 394496 / other id: GSC 3588-10012

Co-ordinates, x,y in image z1051: 1330.5 1701.7

J2000 sky co-ordinates: 21 5 37.75 +46 15 30.09

CMC r'magnitude and 2MASS J,H,K magnitudes: 12.578 11.62 11.359 11.343

USNO B1.0 magnitudes, B1,R1,B2,R2,I2: 13.48 11.4 13.61 11.48 11.09

Misc comments :

W UMa I presume, period 0.43549 a-v r47 11.84, 0.38

Min. I = HJD 2452889.448 + 0.4354921 E + 1.2×10⁻¹⁰ E². (R)

I made a small tweak to steps colour from 3542 0.543 5598 deg K to 3542 0.525 6021 deg K

Comparison reference star(s) co-ordinates:

a00112: 21 5 18.78 +46 19 26.98

a00047: 21 13 3.8 +45 28 19.59

a01232: 21 5 45.82 +46 15 27.29

Reminder:

All dates, JD and HJD are from Jan 1st 2000

season 1: dates 1316 to 1553 is 9/8/2003 to 3/4/2004 (a)

season 2: dates 1696 to 1838 is 23/8/2004 to 12/01/2005 (z)

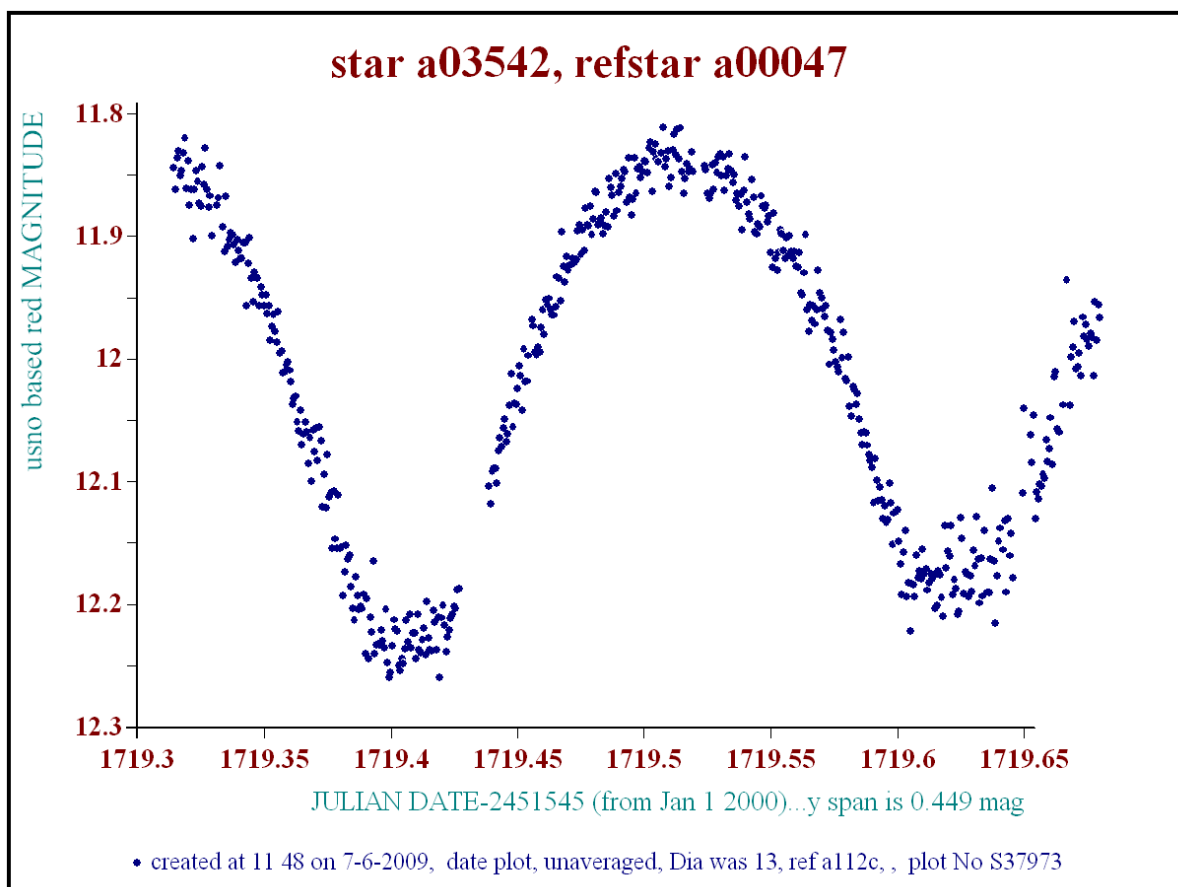
season 3: dates 2085 to 2177 is 16/9/2005 to 17/12/2005 (y)

season 4: dates 2442 to 2755 is 8/9/2006 to 19/7/2007 (w)

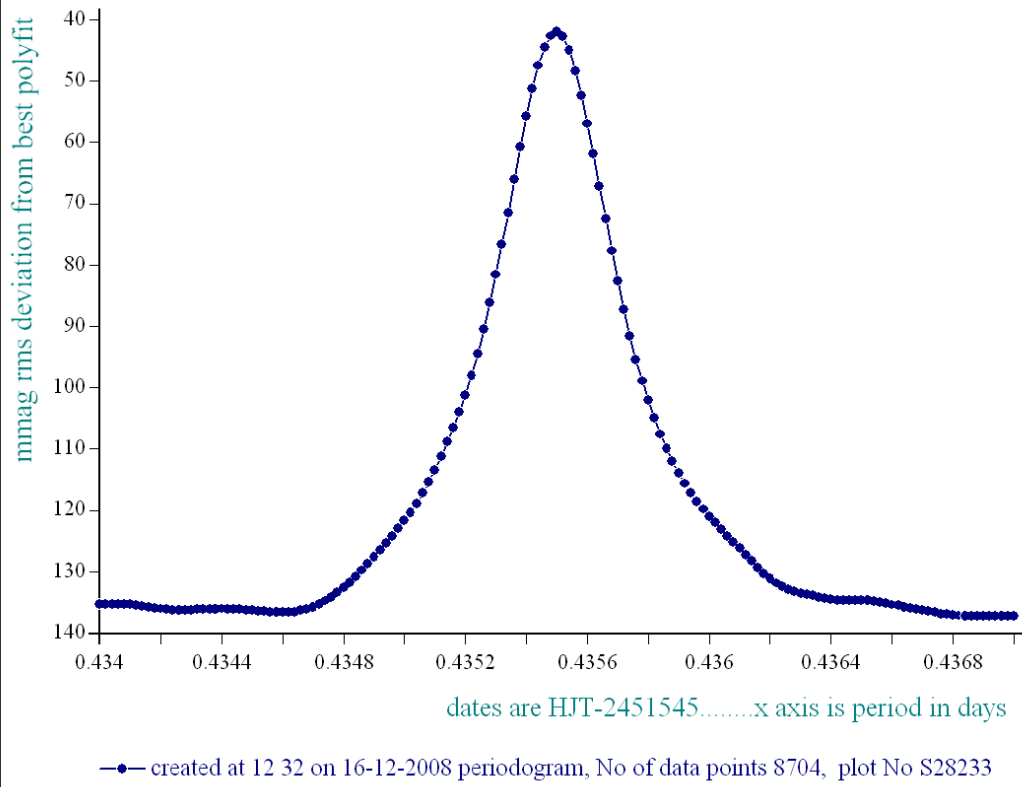
season 5: dates 2772 to 2903 is 4/8/2007 to 13/12/2007 (v)

season 6: dates 2930 to 3266 is 9/1/2008 to 10/12/2008 (u)

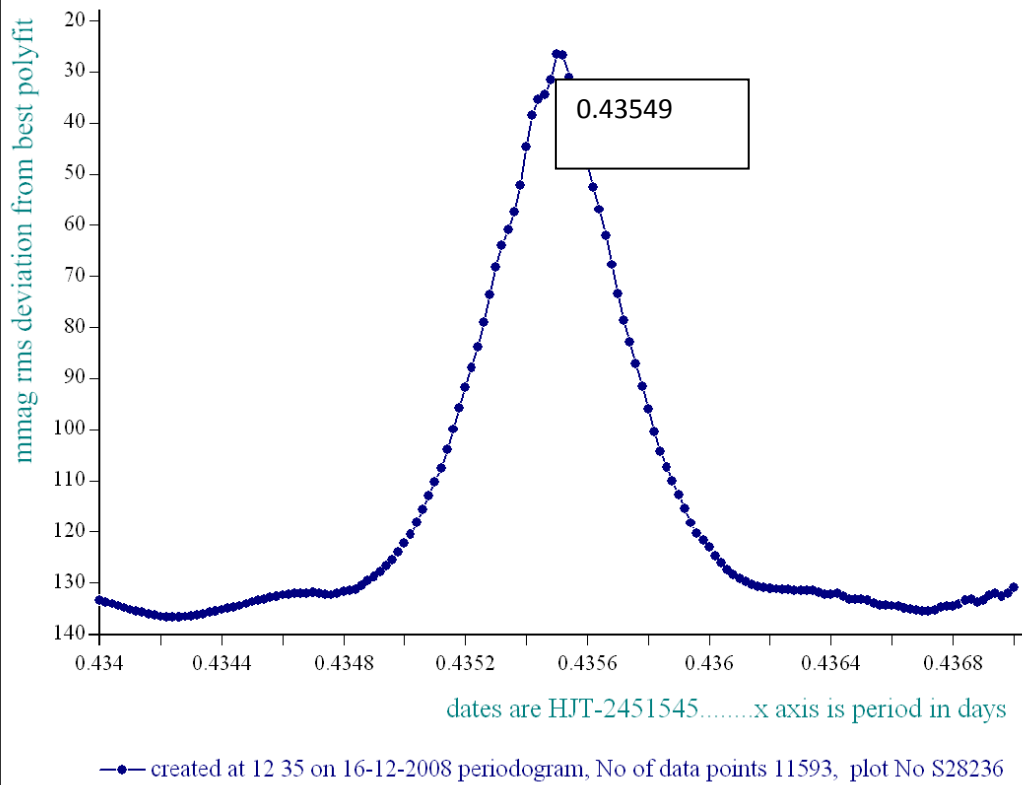
season 7: dates 3403 to 3539 is 26/4/2009 to 10/9/2009 (t)



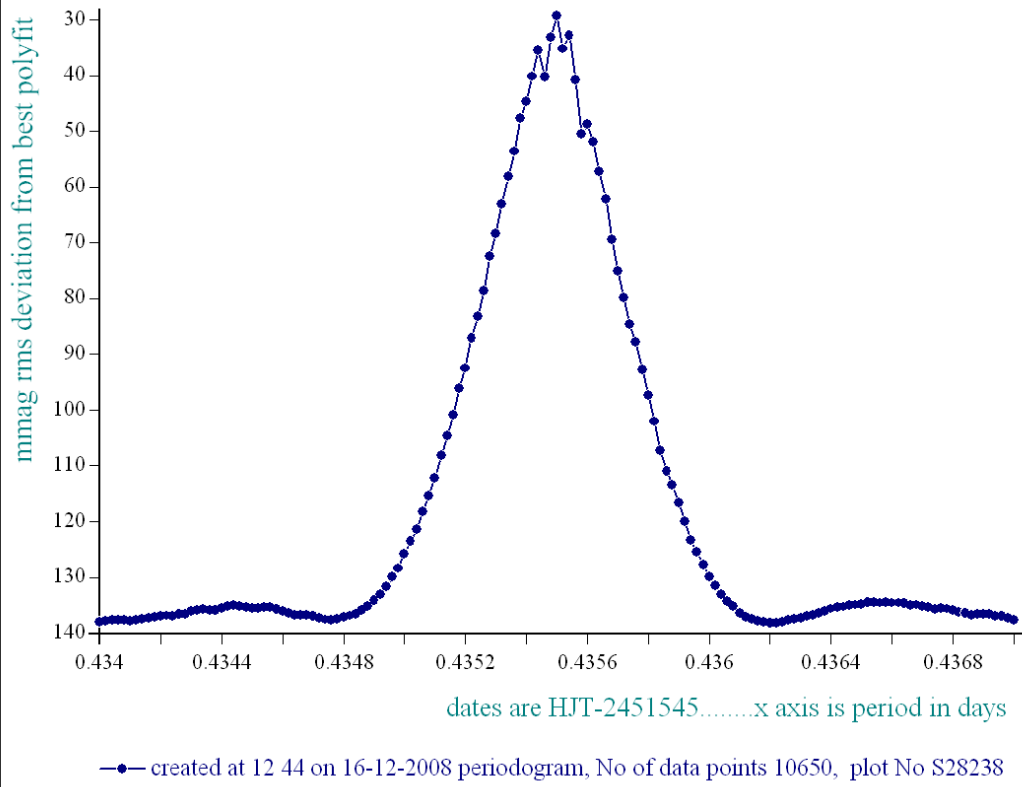
periodogram of star a3542 in dates 1344-1553, dia 13, ref a47



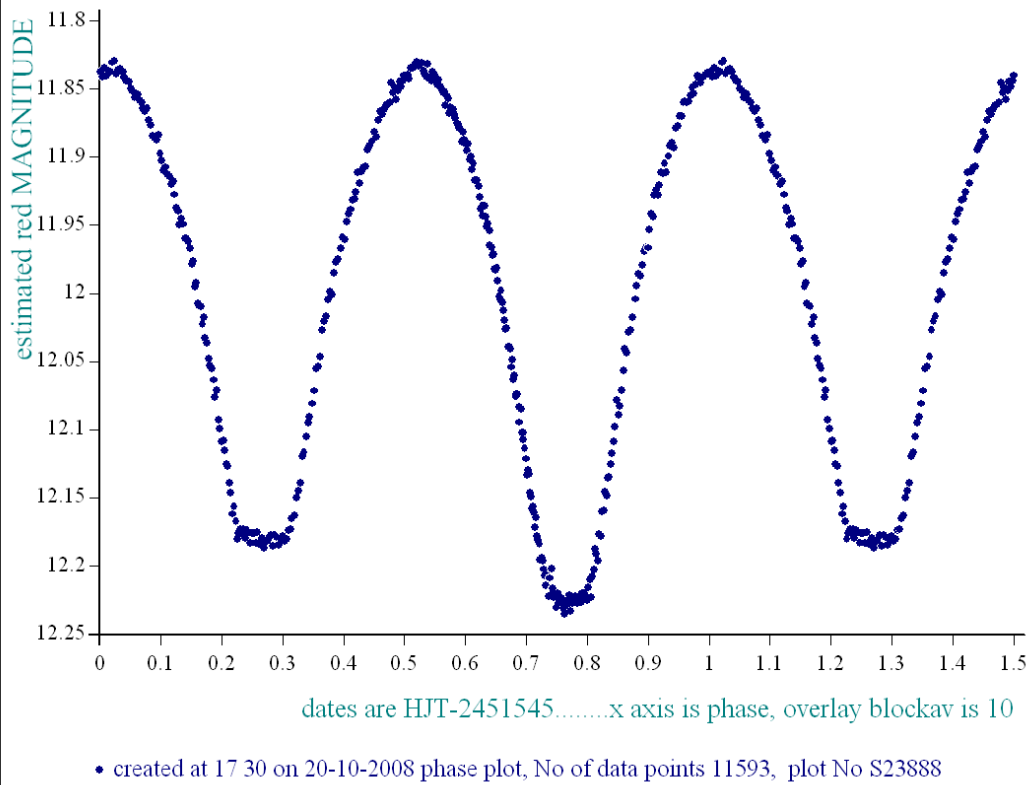
periodogram of star a3542 in dates 1702-1838, dia 13, ref a47



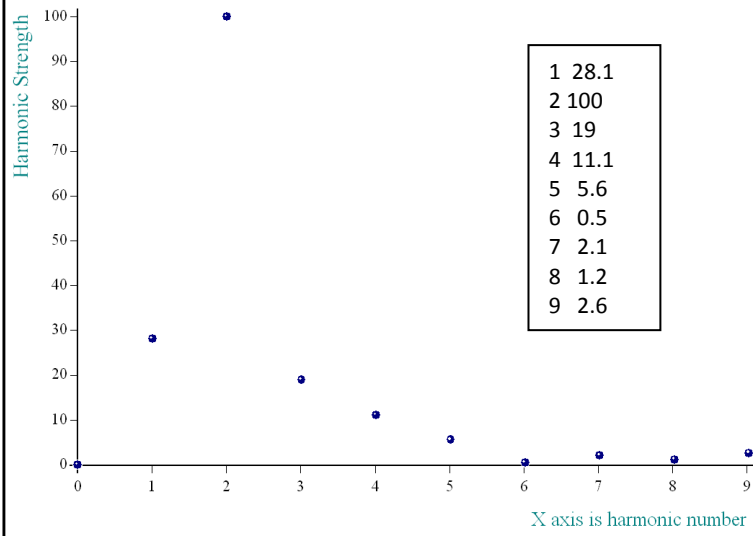
periodogram of star a3542 in dates 2772-2903, dia 13, ref a47



star a3542 dates 1702-1838, dia 13, ref a47, epoch 1220, period 0.43549



Fourier Plot star a3542 in dates 1702-1838 ref a1232, period 0.43549



• created at 16:59 on 19-11-2008 Fourier Plot plot No S28478