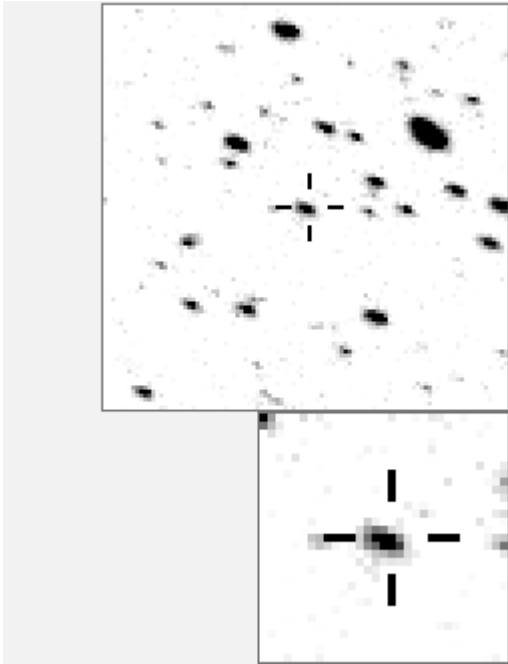


a09582



-----		- -
.	O 9582 v
.	c	a 779
.	b 2117
.	c 3679
. k . . b a . . .	d 4995
.	d	e 6173
.	f 6401
. i . . g . .	g 10405
. O . . . n . . f . .	h 10635
.	i 10830
.	j 11055
.	k 11517
.	m . h e	l 11537 v
.	m 15627
. l	n 17794

Bitmap sizes are 101 and 31 pixels square, South up. The keys to the right refers to the top bitmap. The numbers in the key are those in my catalogue 'starlistA'. Stars marked with a cross have been found to be variable.

Data and comments on star a09582

SWid: a09582 / **USNO id: 1368 436462 / other id:**

Co-ordinates, x,y in image z1051: 4023.7 2582

J2000 sky co-ordinates: 21 15 59.61 +46 49 43.54

CMC r'magnitude and 2MASS J,H,K magnitudes: 13.279 11.924 11.606 11.527

USNO B1.0 magnitudes, B1,R1,B2,R2,I2: 14.98 13.19 15.13 13.52 13.15

Misc comments : edge distortion

A nearly sinewave osc (only 6% 2nd harmonic in 2007 data), p2004 is 0.220966, to ref 779 13.23, 210mmag

Comparison reference star(s) co-ordinates:

a00779: 21 16 6.75 +46 48 58.46

a01733: 21 15 40.11 +46 47 26.84

a09582: 21 15 59.61 +46 49 43.54

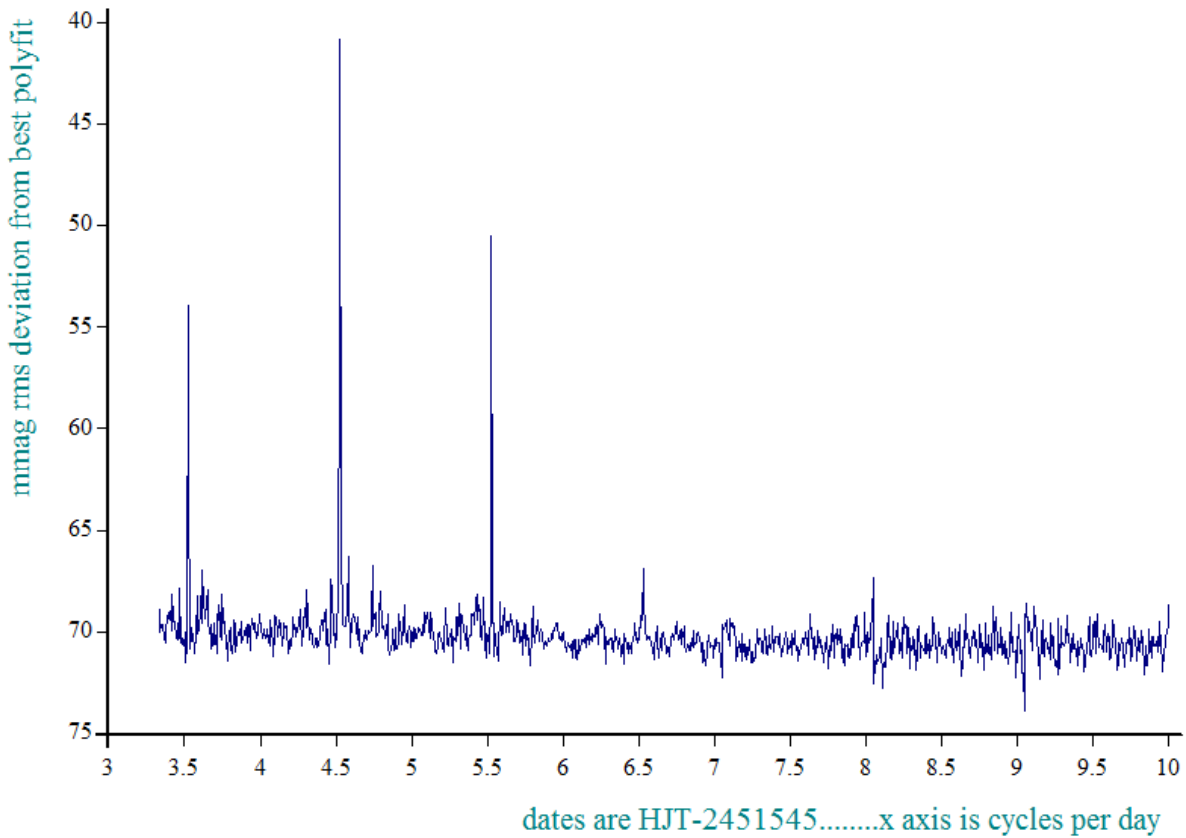
colour temp estimate: 5801 K

plots in 2008 and 9 would be interesting and some CMC mags

Reminder: **All dates, JD and HJD are from Jan 1st 2000**

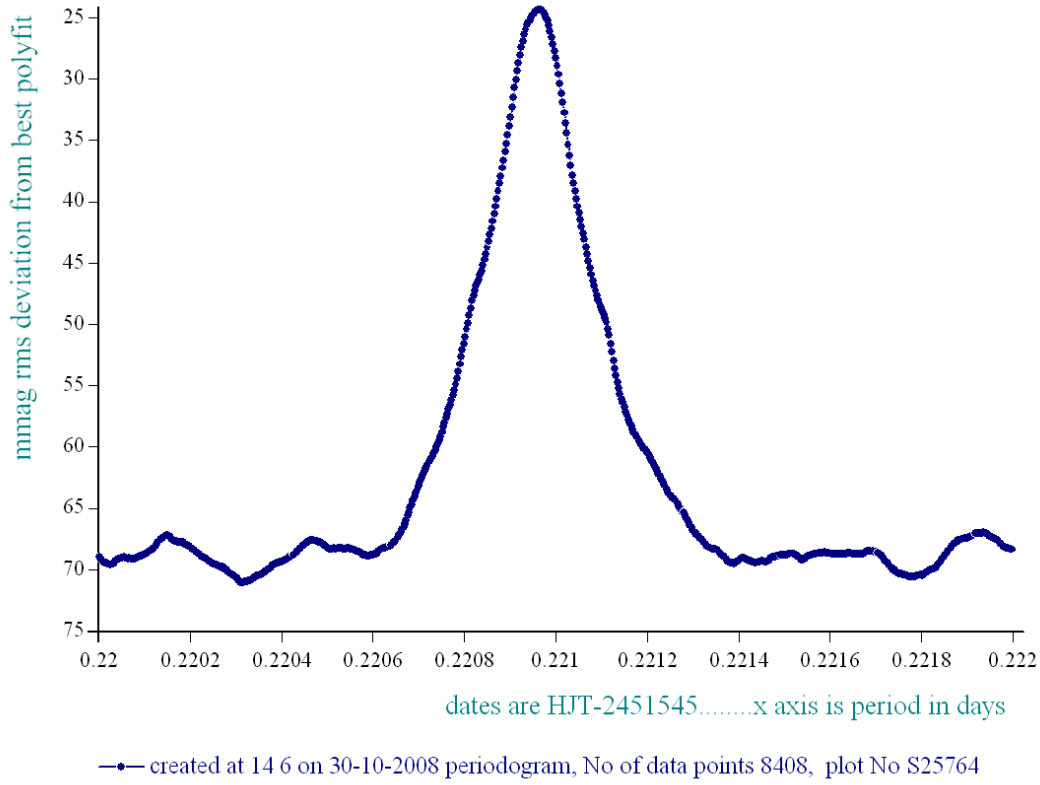
- season 1: dates 1316 to 1553 is 9/8/2003 to 3/4/2004 (a)
- season 2: dates 1696 to 1838 is 23/8/2004 to 12/01/2005 (z)
- season 3: dates 2085 to 2177 is 16/9/2005 to 17/12/2005 (y)
- season 4: dates 2442 to 2755 is 8/9/2006 to 19/7/2007 (w)
- season 5: dates 2772 to 2903 is 4/8/2007 to 13/12/2007 (v)
- season 6: dates 2930 to 3266 is 9/1/2008 to 10/12/2008 (u)
- season 7: dates 3403 to 3539 is 26/4/2009 to 10/9/2009 (t)

periodogram of star a9582 in dates 1702-1838, dia 8, ref a779

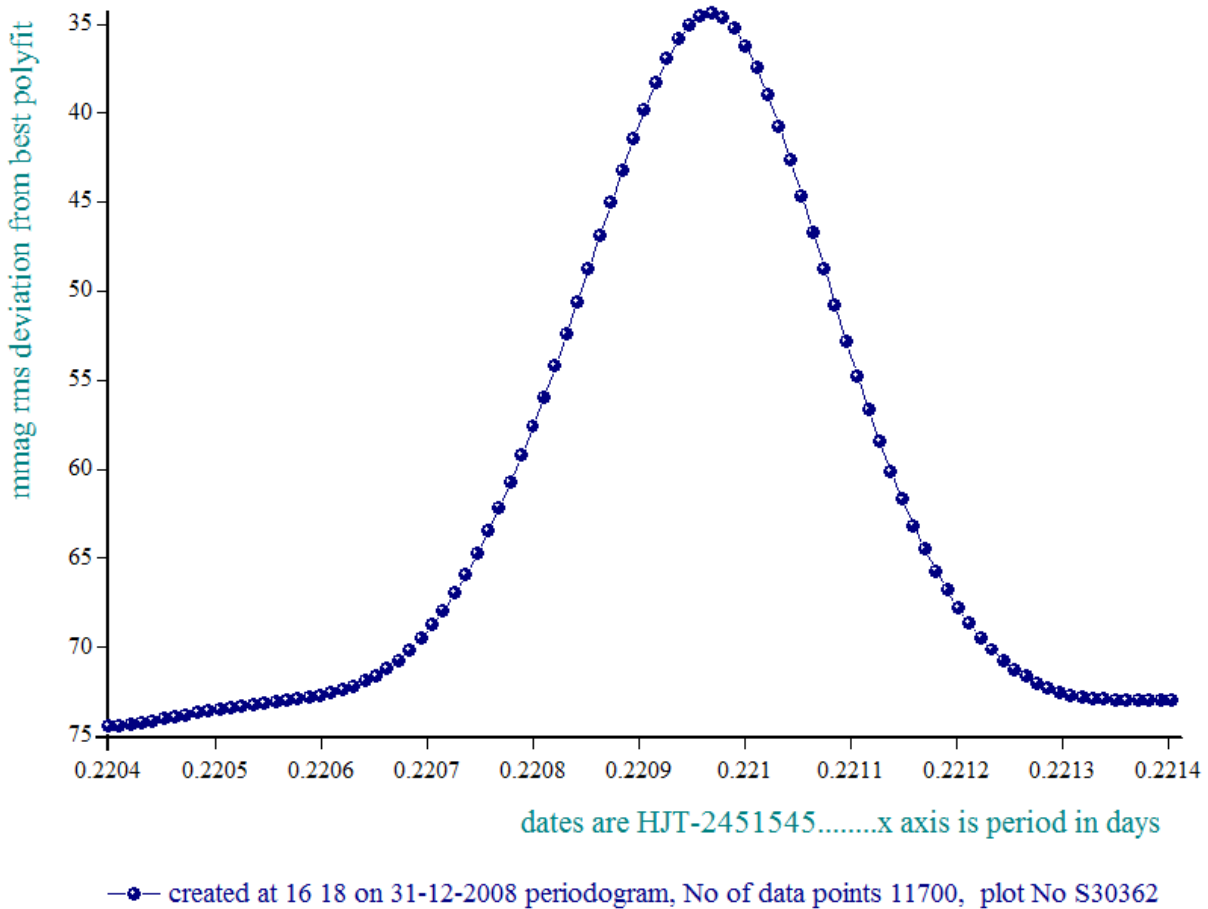


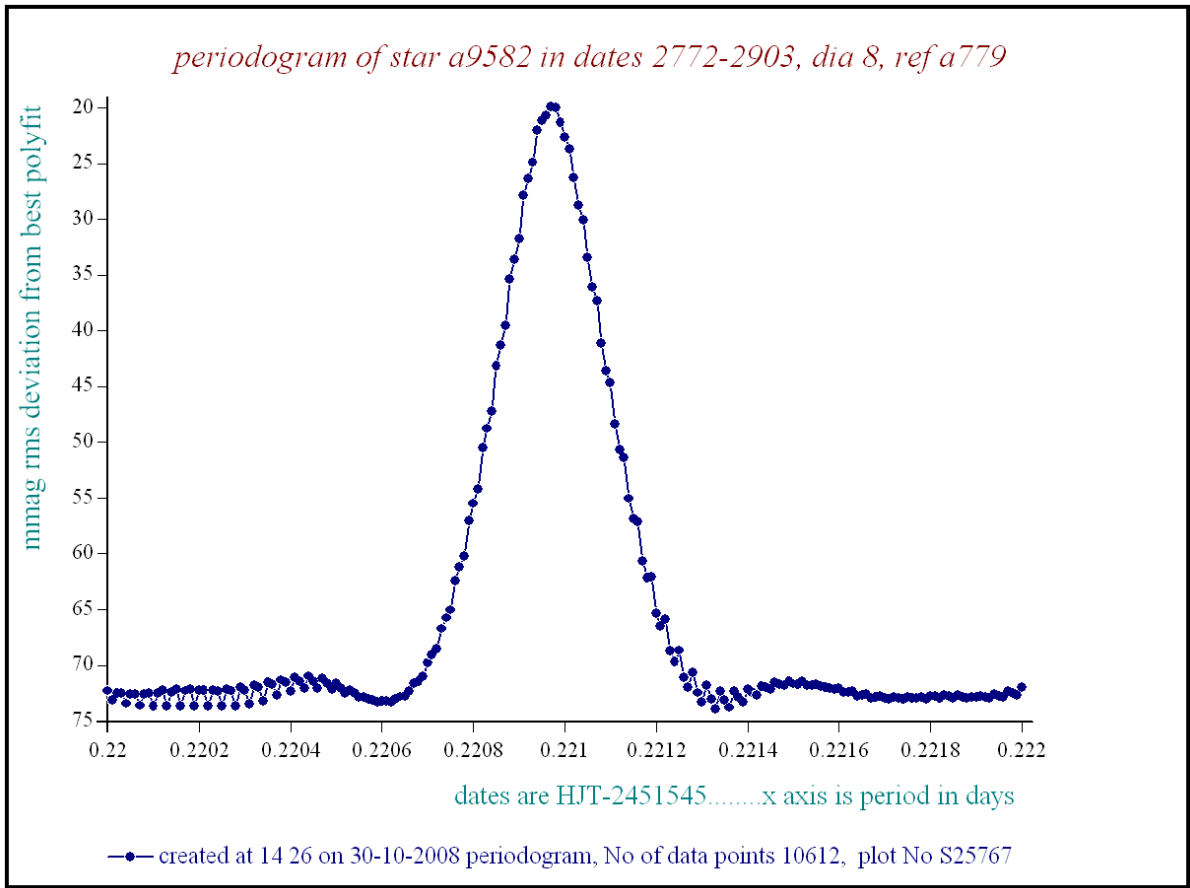
— created at 16 15 on 31-12-2008 periodogram, No of data points 11700, plot No S30361

periodogram of star a9582 in dates 1344-1553, dia 8, ref a779

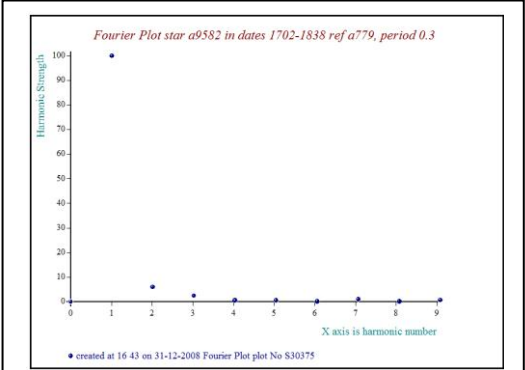
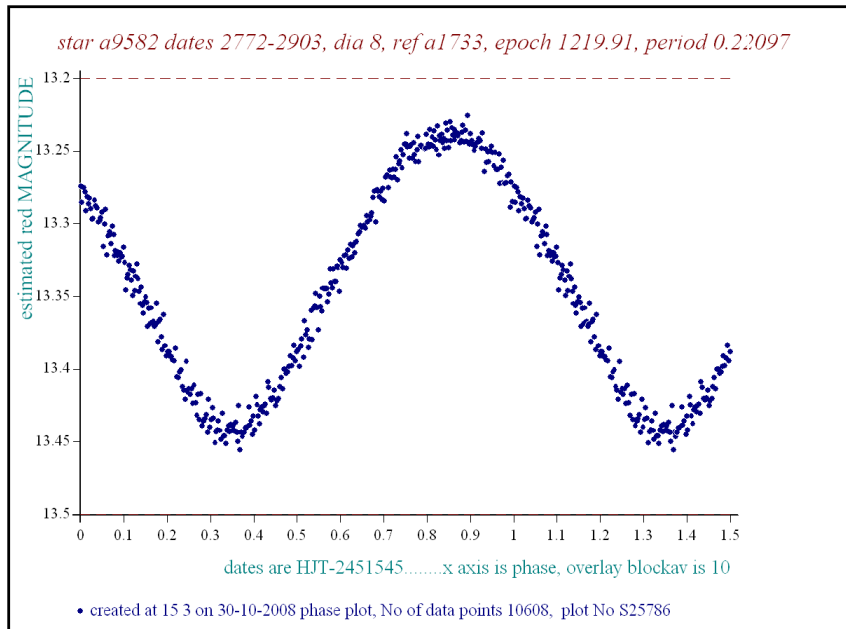


periodogram of star a9582 in dates 1702-1838, dia 8, ref a779





The correct period may be between 0.22097 although the difference in the levels of the two waves is very small. A single wave pattern is shown below with its fourier coefficients, this star is nearly a perfect sinewave:

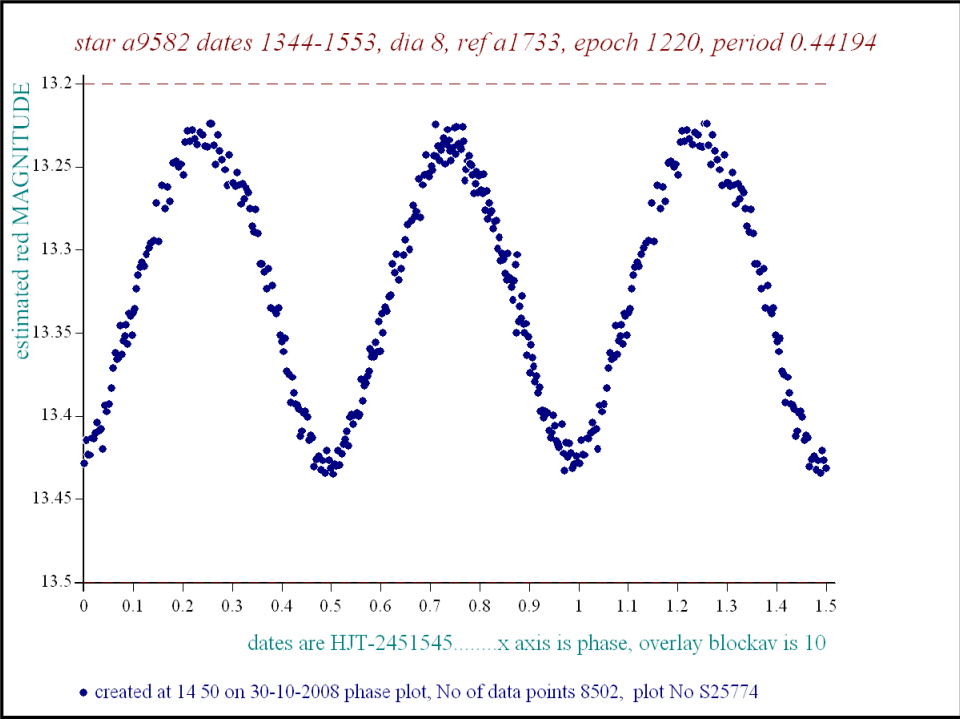


Harmonic number and %

1	100
2	6
3	2.4
4	0.5
5	0.6

There is a hint of a period increase since 2003, the measured numbers (in days) are:

- 2003/4 0.220960
- 2004/5 0.220966
- 2006/7 0.220964
- 2007/8 0.220970



There appears to be a very small difference in level between successive minima. Approximate measurements show a difference of 6mmag in 2003, 3 in 2004 and 4 in 2007. The true value will be close to 4, about 2% of the p-p. The Fourier plots from 2003 (top and left) are different in detail from those from 2007. I don't know if that has any significance.

