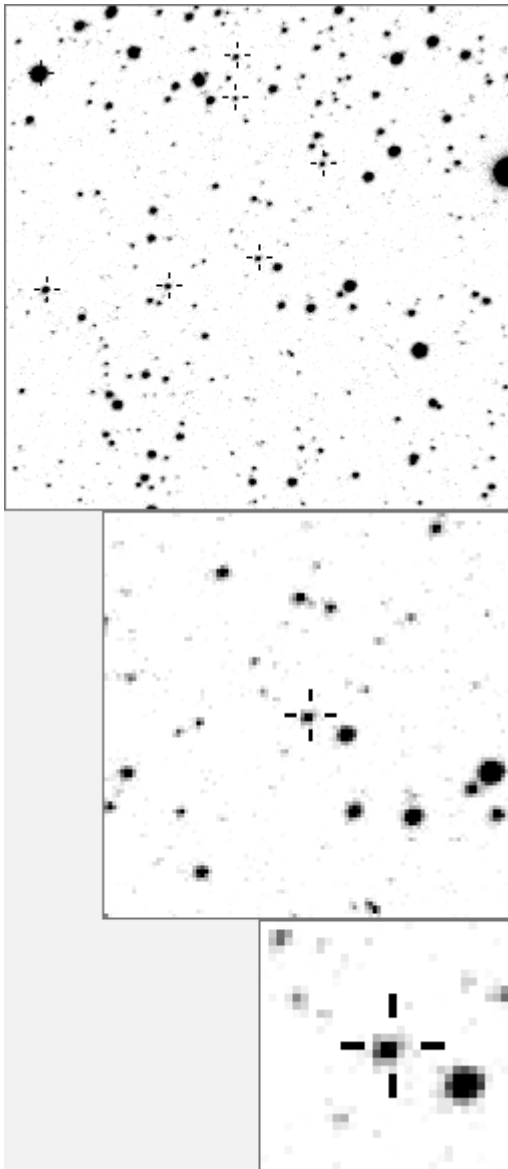


a17010



variable and brighter stars

. . . i g	O 16885 v
. . . e . . . l c h	a 152 v
. a n	b 358
. .	c 1309
. .	d 1336
. .	e 1490
. .	f 1528
. .	g 1596 v
. j . . . k d	h 1780
. .	i 2288
. .	j 7433 v
. .	k 12030 v
. .	l 13138 v
. .	m 17254 v
. .	n 20050 v
-----	-----
. .	O 16885 v
. .	a 1336
. .	b 4562
. .	c 5630
. .	d 9628
. .	e 11716
. .	f 12030 v
. .	g 12058
. .	h 13368
f .	i 14817
. .	j 15396
. . . n .	k 17254 v
. .	l 19741
. .	m 21980
. .	n 27449

Bitmap sizes are 251, 101 and 31 pixels square, South up. The keys to the right refer to the 1st two bitmaps. The numbers in the key are those in my catalogue 'starlistA'. Stars marked with a cross have been found to be variable.

Data and comments on star a16885

SWid: a16885 / **USNO id: 0 0 / other id:**

Co-ordinates, x,y in image z1051: 2681.7 860.2

J2000 sky co-ordinates: 21 10 47.18 +45 42 12.97

CMC r'magnitude and 2MASS J, H, K magnitudes: 13.767 12.134 11.629 11.508

USNO B1.0 magnitudes, B1, R1, B2, R2, I2: 0 0 0 0 0

Misc comments :

Sept 08 osc, to ref 171 magm 14.37 magr 0.08, period 0.47031

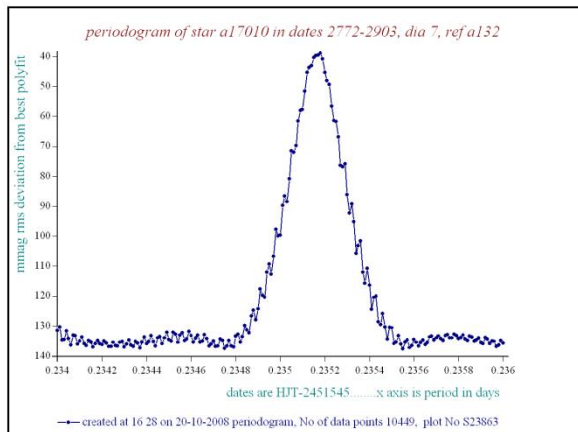
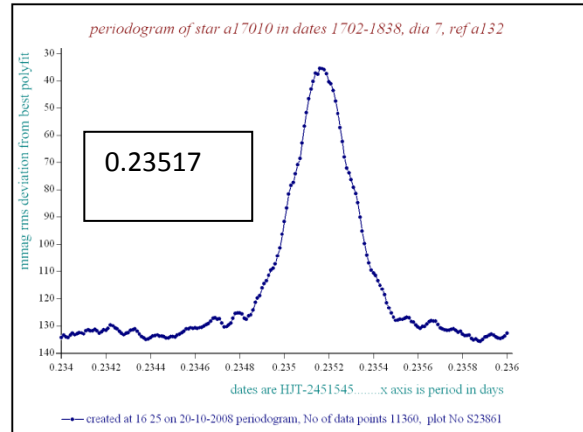
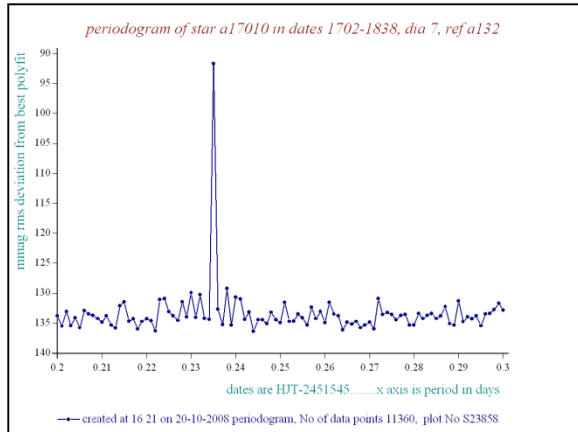
Comparison reference star(s) co-ordinates:

a05630: 21 12 4.61 +45 49 49.24

a00171: 21 10 49.4 +45 42 22.27

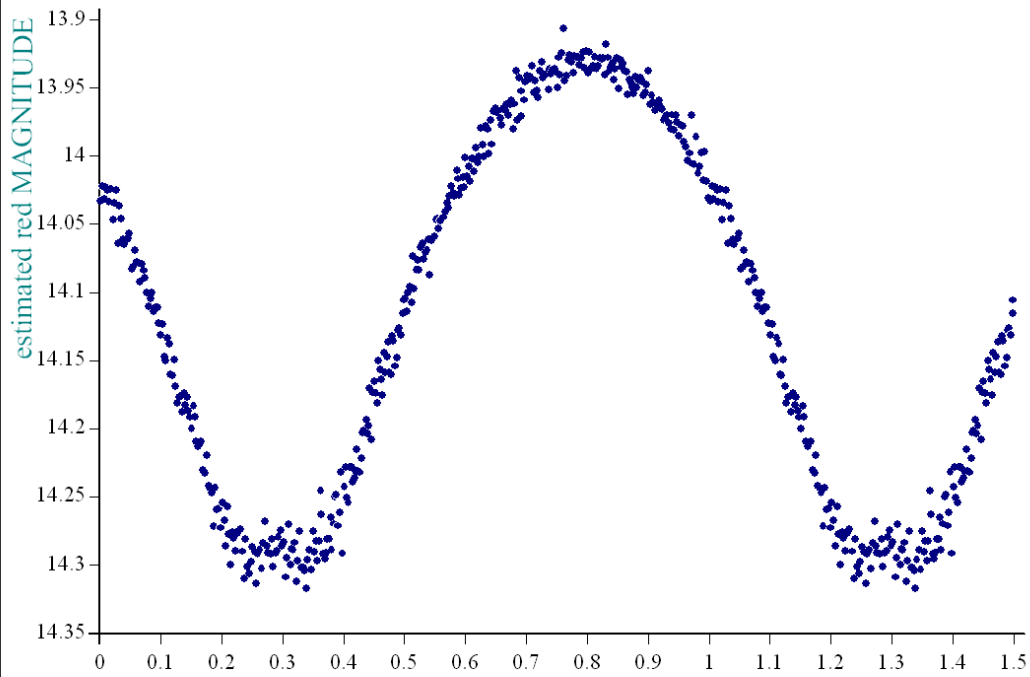
Reminder: All dates, JD and HJD are from Jan 1st 2000

- season 1: dates 1316 to 1553 is 9/8/2003 to 3/4/2004 (a)
- season 2: dates 1696 to 1838 is 23/8/2004 to 12/01/2005 (z)
- season 3: dates 2085 to 2177 is 16/9/2005 to 17/12/2005 (y)
- season 4: dates 2442 to 2755 is 8/9/2006 to 19/7/2007 (w)
- season 5: dates 2772 to 2903 is 4/8/2007 to 13/12/2007 (v)
- season 6: dates 2930 to 3266 is 9/1/2008 to 10/12/2008 (u)
- season 7: dates 3403 to 3539 is 26/4/2009 to 10/9/2009 (t)



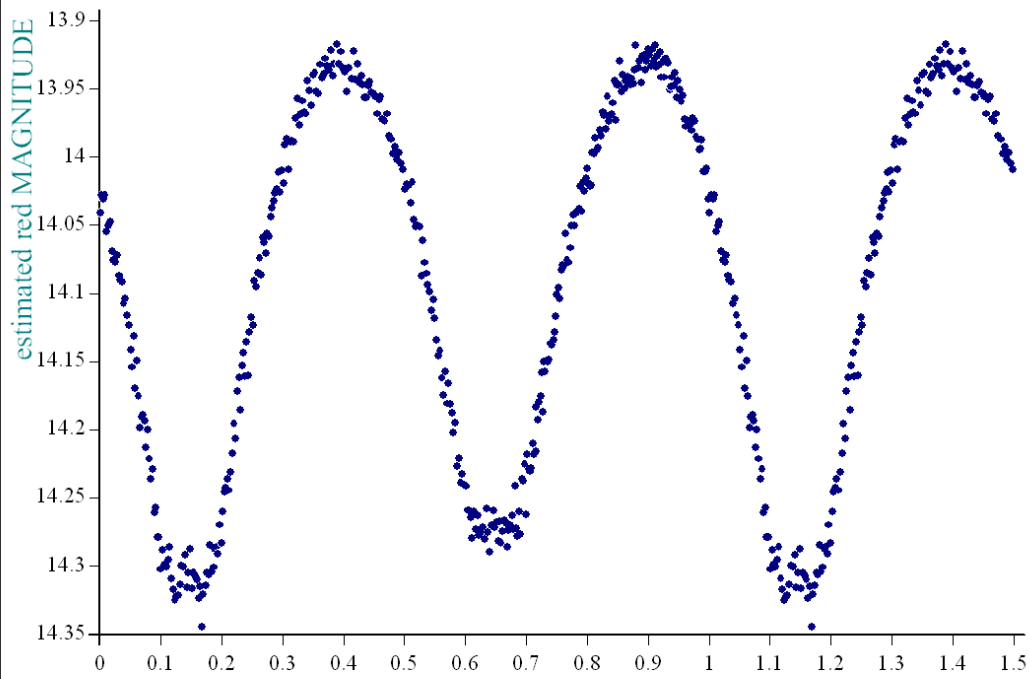
This is an unusually well defined periodogram for such a faint star. The peak 3 years later reads at 0.23516

star a17010 dates 1702-1838, dia 7, ref a132, epoch 1220, period 0.23517



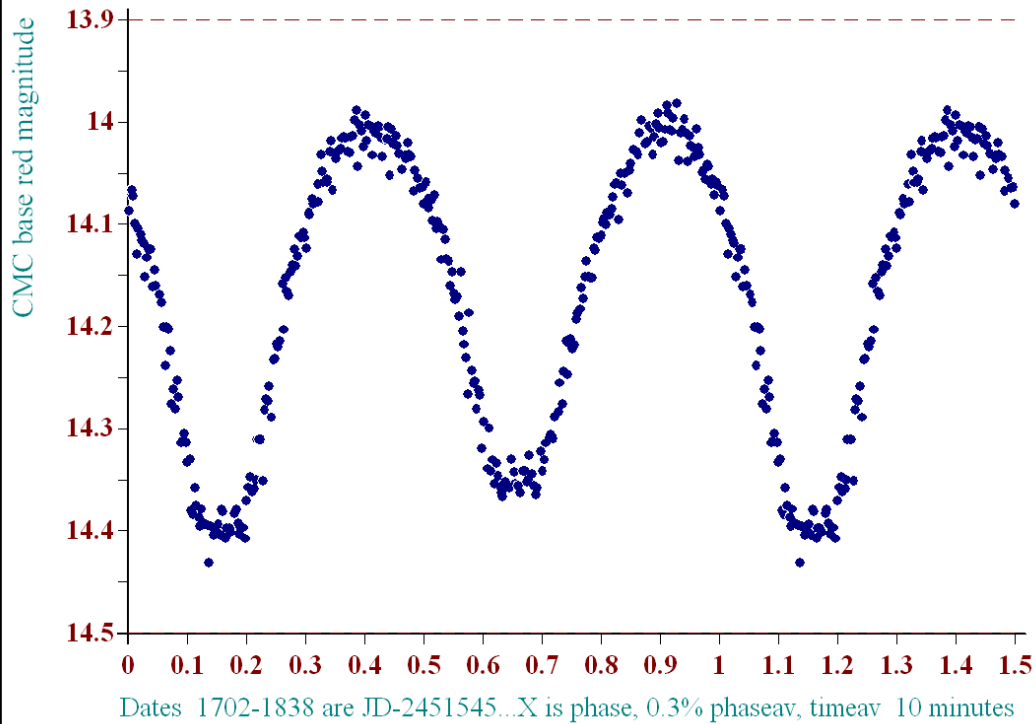
• created at 16 30 on 20-10-2008 phase plot, No of data points 11360, plot No S23864

star a17010 dates 1702-1838, dia 7, ref a132, epoch 1220, period 0.47034



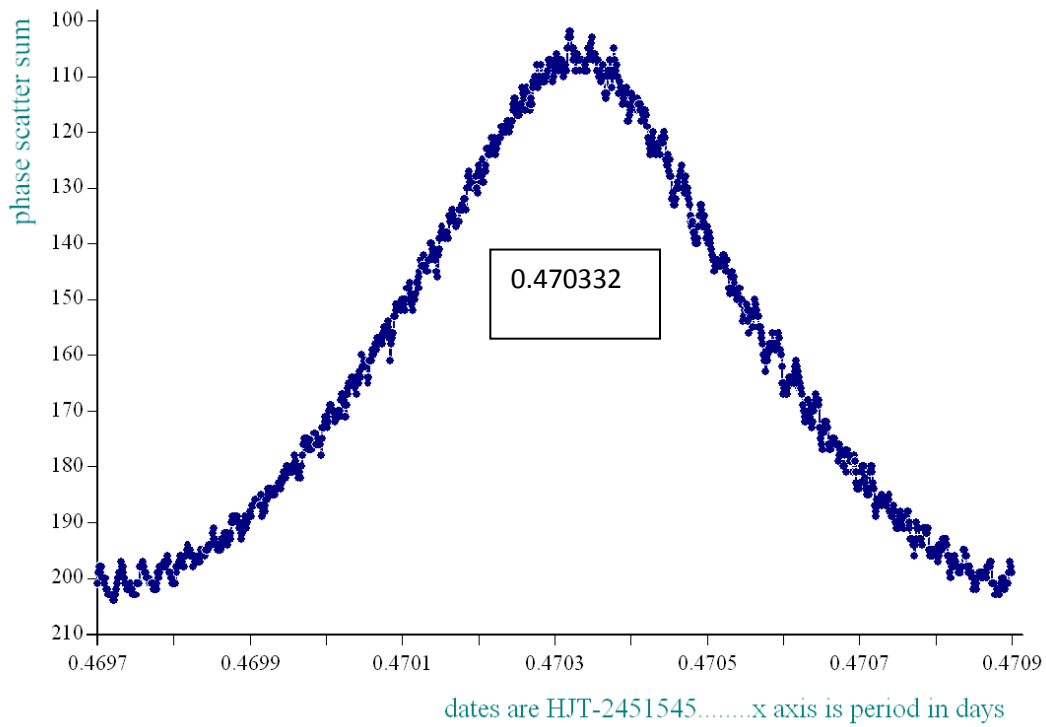
• created at 16 44 on 20-10-2008 phase plot, No of data points 11360, plot No S23872

Phase Plot, Star a17010 period 0.47031d



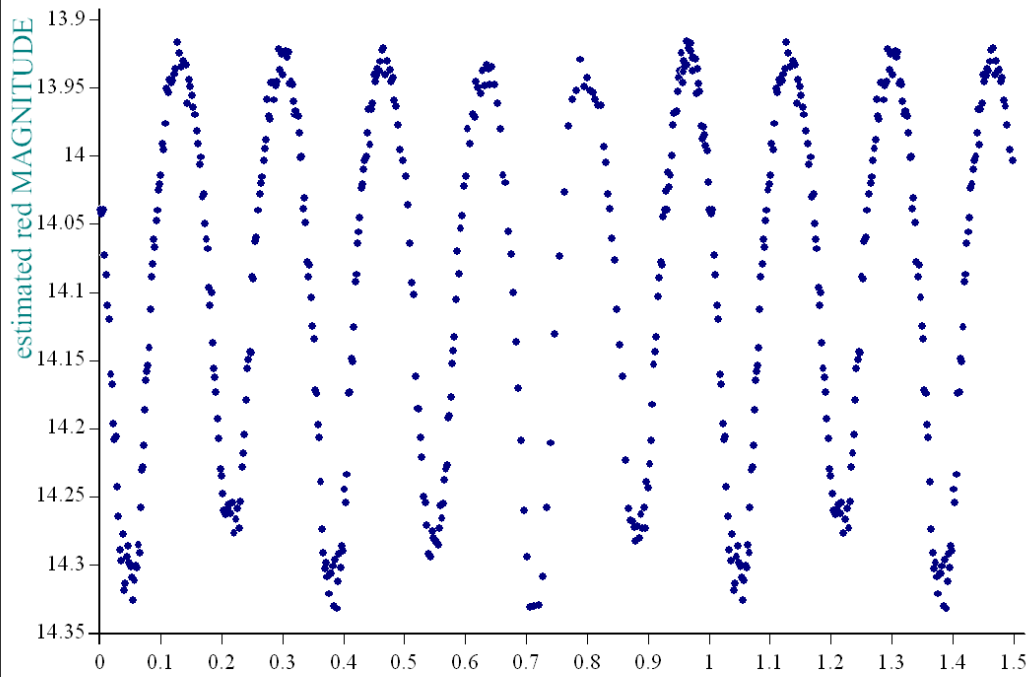
• created at 11 49 on 10-6-2009, phase plot, Dia was 7, ref a132c, epoch 2700.564, plot No S38258

periodogram of star a17010 in dates 1702-1838, dia 7, ref a132



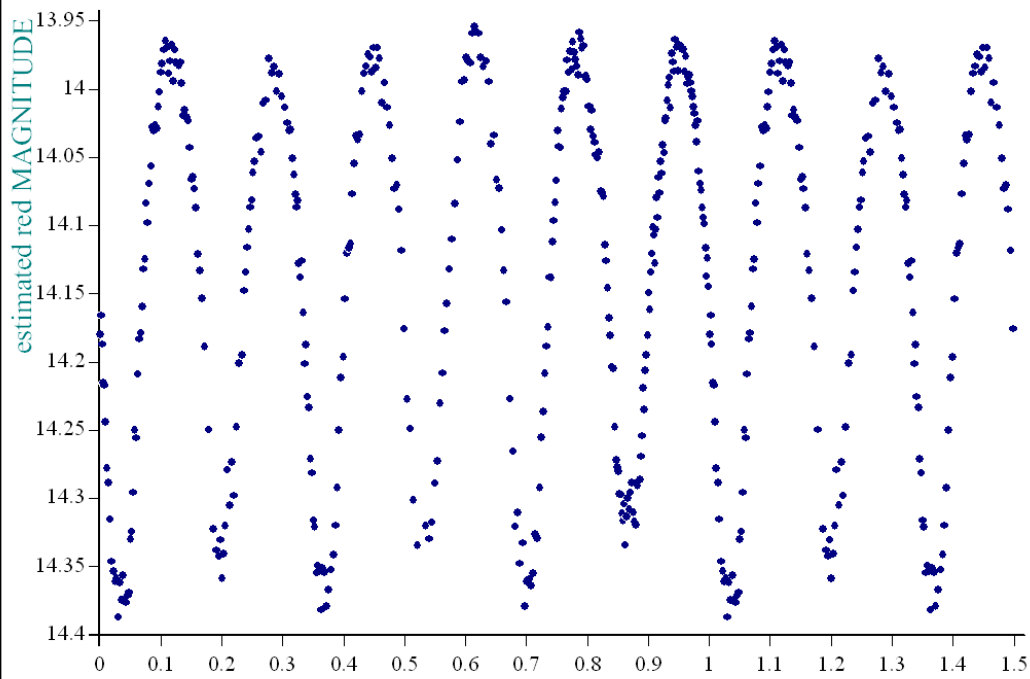
—•— created at 17 9 on 20-10-2008 periodogram No of data points 11360, plot No S23880

star a17010 dates 1702-1838, dia 7, ref a132, epoch 1220, period 1.41102



• created at 16 41 on 20-10-2008 phase plot, No of data points 11360, plot No S23870

star a17010 dates 2772-2903, dia 7, ref a132, epoch 1220, period 1.41102



• created at 16 42 on 20-10-2008 phase plot, No of data points 10449, plot No S23871