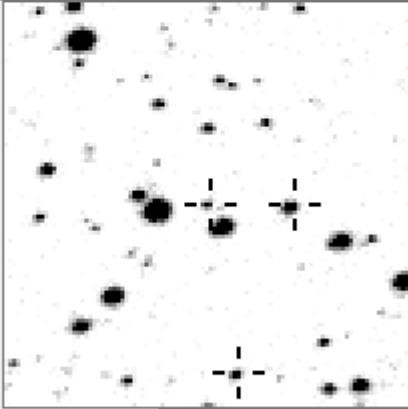
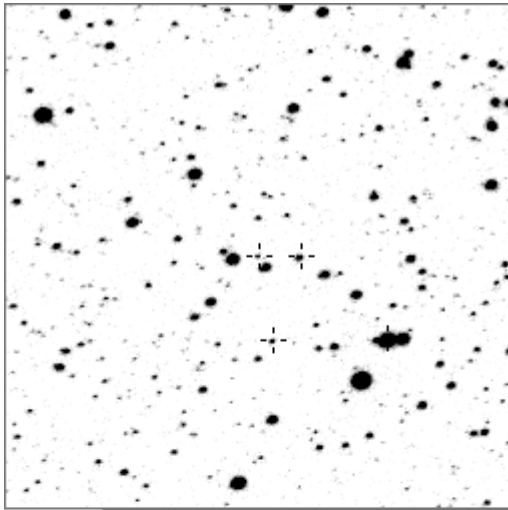


a18778



variable and brighter stars

. j	O 18778 v
. f	a 29
.	b 111 v
. c l	c 161
.	d 402
. g i	e 536
. . . k	f 747
. h O m	g 768
.	h 872
. e	i 1155
. n	j 1627
. a	k 1798
.	l 1851
.	m 9147 v
. d	n 15468 v

.	O 18778 v
. . . a	a 768
.	b 872
.	c 2307
.	d 2836
.	e 3029
. . . k	f 3379
.	g 5655
. i . O j	h 6845
. e f	i 8842
.	j 9147 v
. d c	k 9948
.	l 12829
. . . h	m 14969
.	n 15468 v
. l g	

Bitmap sizes are 251, 101 and 31 pixels square, South up. The keys to the right refer to the 1st two bitmaps. The numbers in the key are those in my catalogue 'starlistA'. Stars marked with a cross have been found to be variable.

Data and comments on star a18778

SWid: a18778 / **USNO id: 1364 395940 / other id:**

Co-ordinates, x,y in image z1051: 937.7 2056.6

J2000 sky co-ordinates: 21 4 6.44 +46 29 24.21

CMC r'magnitude and 2MASS J, H, K magnitudes: 14.487 13.161 12.898 12.851

USNO B1.0 magnitudes, B1, R1, B2, R2, I2: 14.98 13.85 15.47 14.24 14.13

Misc comments :

Sept 08 osc, period 0.3147 magm 13.4, magr 0.18 to best ref 47

Comparison reference star(s) co-ordinates:

a11264: 21 5 18.78 +46 19 26.98

a00047: 21 4 7.4 +46 29 36.91

a03029: 21 1 56.04 +46 21 43.47

Reminder: **All dates, JD and HJD are from Jan 1st 2000**

season 1: dates 1316 to 1553 is 9/8/2003 to 3/4/2004 **(a)**

season 2: dates 1696 to 1838 is 23/8/2004 to 12/01/2005 **(z)**

season 3: dates 2085 to 2177 is 16/9/2005 to 17/12/2005 **(y)**

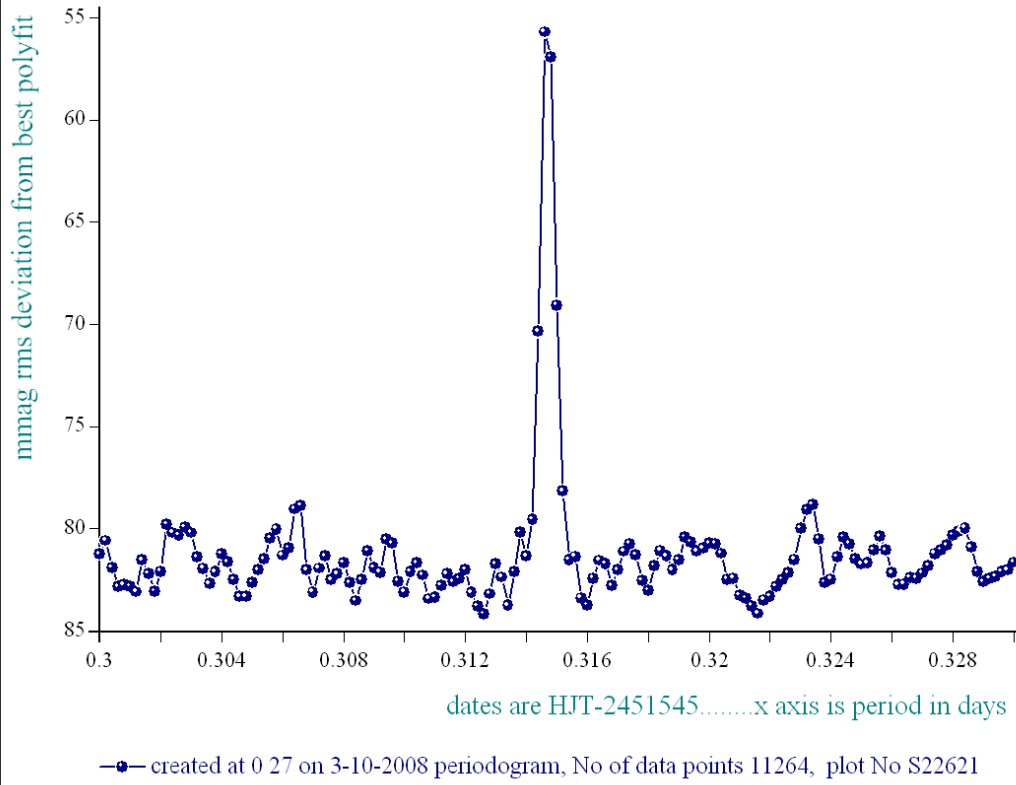
season 4: dates 2442 to 2755 is 8/9/2006 to 19/7/2007 **(w)**

season 5: dates 2772 to 2903 is 4/8/2007 to 13/12/2007 **(v)**

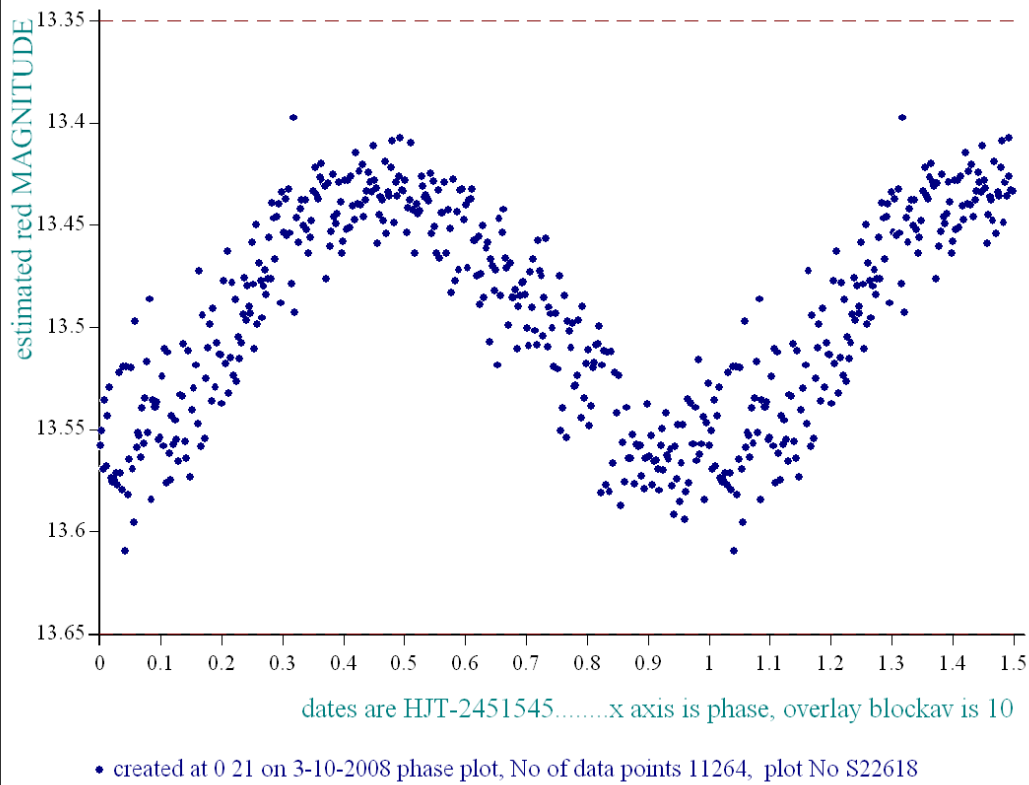
season 6: dates 2930 to 3266 is 9/1/2008 to 10/12/2008 **(u)**

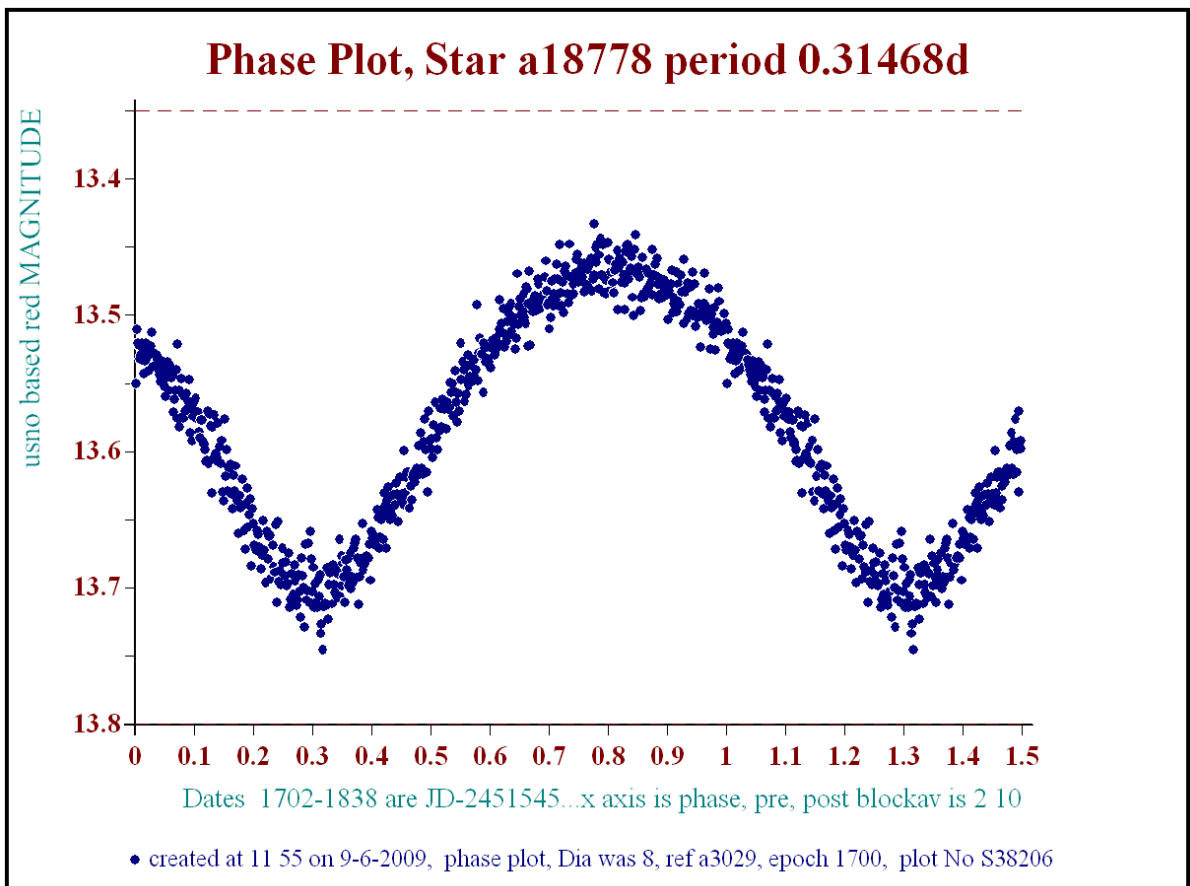
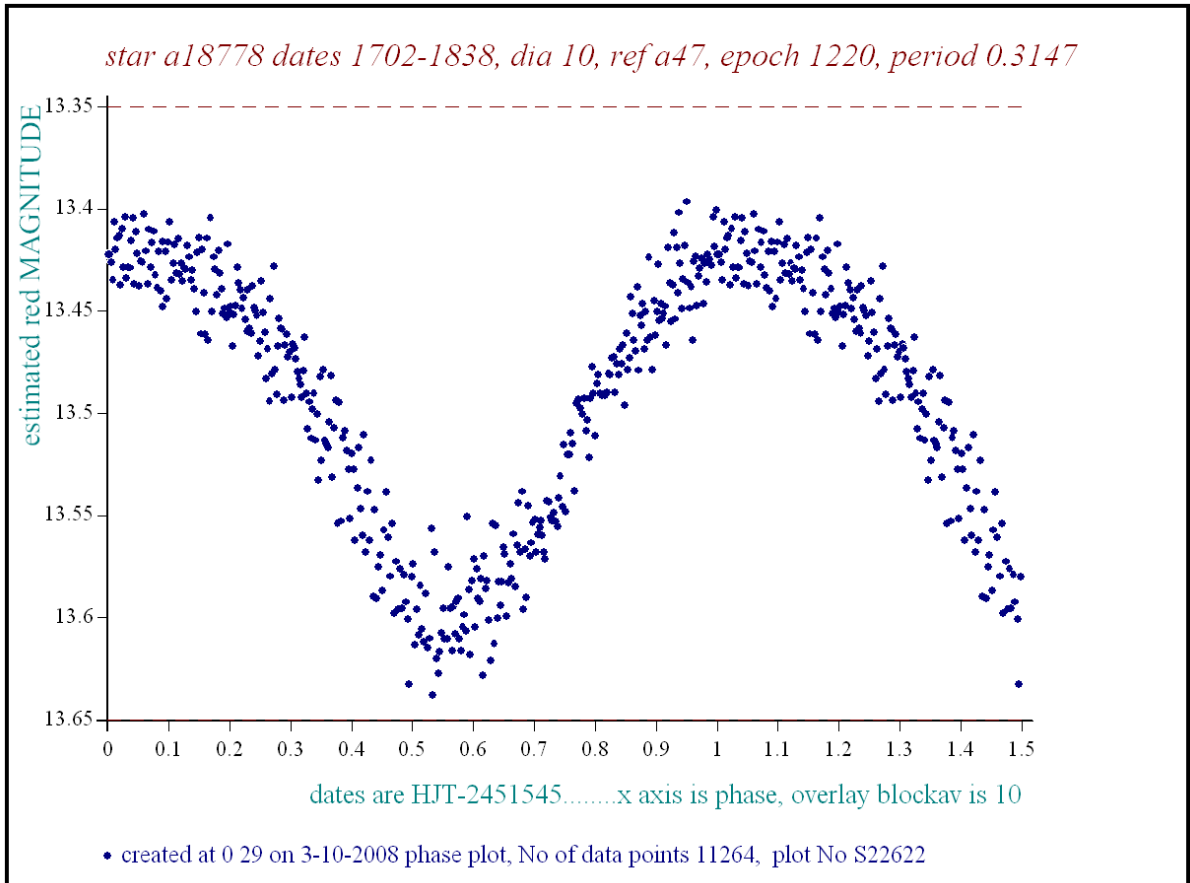
season 7: dates 3403 to 3539 is 26/4/2009 to 10/9/2009 **(t)**

periodogram of star a18778 in dates 1702-1838, dia 10, ref a47



star a18778 dates 1702-1838, dia 10, ref a47, epoch 1220, period 0.315





close ref is much better

18778 compared with Wuma a03542

