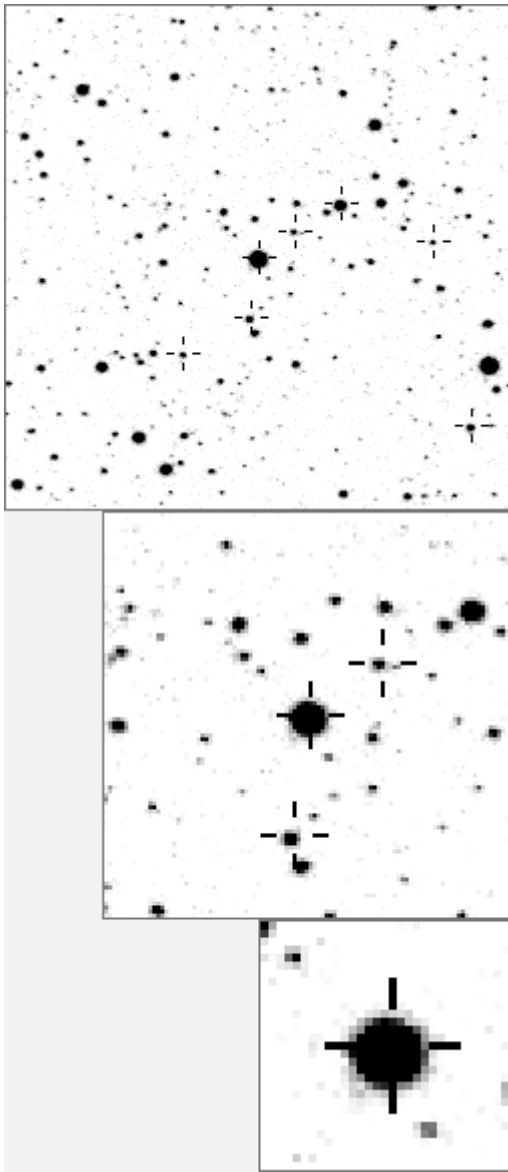


a00070 ≡ V408 Cyg



variable and brighter stars			
.	.	O	70 v
.	.	a	55
.	f	b	994
.	.	d	1133
.	.	c	1168
.	.	e	1246 v
.	.	i	1246 v
.	.	m	1429
.	.	O	1632
.	.	n	1716
.	.	k	3138
.	h	l	a
.	.	j	6180 v
.	.	k	7262 v
.	b	j	12273 v
.	c	m	12748 v
g	.	n	17090 v
-----			
.	.	O	70 v
.	.	a	1246 v
.	.	b	7262 v
.	.	m	f
.	.	a	c
.	.	c	h
.	.	g	d
l	.	j	e
.	.	f	10229
d	.	O	g
.	.	n	h
.	.	k	11131
.	.	i	12273 v
.	.	j	12748 v
.	.	k	16324
.	.	l	16635
.	.	b	16635
.	.	e	m
.	.	m	17570
i	.	n	18446

Bitmap sizes are 251, 101 and 31 pixels square, South up. The keys to the right refer to the 1<sup>st</sup> two bitmaps. The numbers in the key are those in my catalogue 'starlistA'. Stars marked with a cross have been found to be variable.

**Data and comments on star a00070**

SWid: a00070 / **USNO id: 3588 403401 / other id: V408 Cyg**

Co-ordinates, x,y in image z1051: 1327.3 1315.1

**J2000 sky co-ordinates: 21 5 37.99 +46 0 8.81**

CMC r'magnitude and 2MASS J,H,K magnitudes: 9.468 0 0 0

USNO B1.0 magnitudes, B1,R1,B2,R2,I2: 12.07 9.49 11.07 9.42 8.6

Misc comments :

irreg, magm 8.8 to 57. range 8.8 to 9.22, 440mmag

GCVS entry: V408 1 21 05 37.9 46 00 09 70

Comparison reference star(s) co-ordinates:

**a00057: 21 4 52.54 +46 12 24.1**

**This is an old report- Really do need CMC mags and more plots**

Reminder: **All dates, JD and HJD are from Jan 1<sup>st</sup> 2000**

season 1: dates 1316 to 1553 is 9/8/2003 to 3/4/2004	<b>(a)</b>
season 2: dates 1696 to 1838 is 23/8/2004 to 12/01/2005	<b>(z)</b>
season 3: dates 2085 to 2177 is 16/9/2005 to 17/12/2005	<b>(y)</b>
season 4: dates 2442 to 2755 is 8/9/2006 to 19/7/2007	<b>(w)</b>
season 5: dates 2772 to 2903 is 4/8/2007 to 13/12/2007	<b>(v)</b>
season 6: dates 2930 to 3266 is 9/1/2008 to 10/12/2008	<b>(u)</b>
season 7: dates 3403 to 3539 is 26/4/2009 to 10/9/2009	<b>(t)</b>

