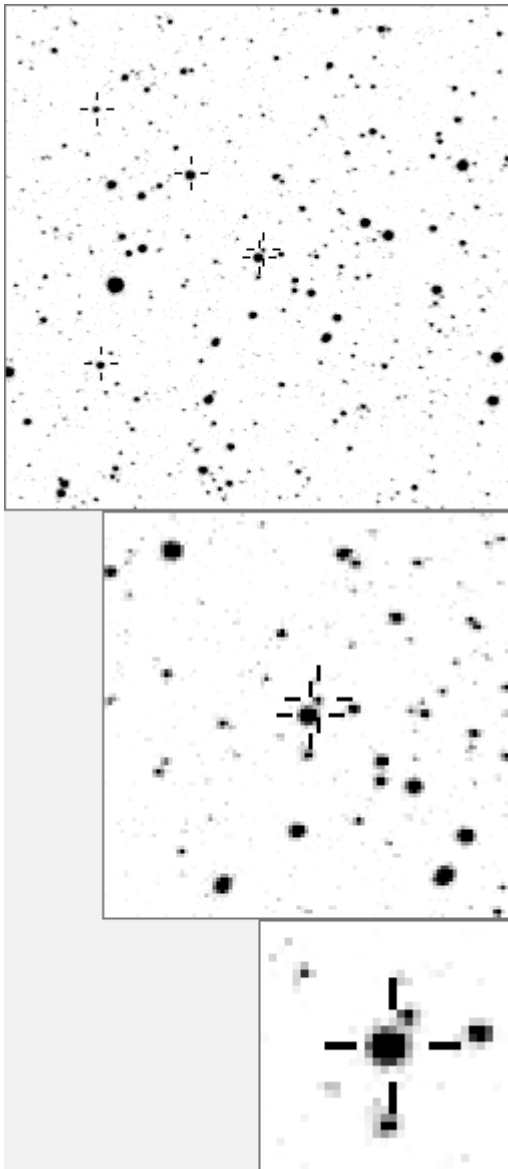


a02467



variables & brighter stars

.	O	2467	v
.	a	138	
.	b	1271	
. . m	c	1383	
.	d	1586	
. . . i g	e	1608	
.	f	2173	
. . . . n	g	2571	v
. . . a	h	2693	
.	j	2862	
. . l	b	3082	
.	d	3869	v
.	l	5972	v
.	m	9680	v
. k	n	20366	v

.	O	2467	v
. . a h	a	2571	v
i	b	3082	
.	c	4689	
.	d	5233	
.	e	5459	
.	f	6055	
. . . . n	g	9795	
.	O l m	h	10694
.	k	i	12502
.	e	j	12650
.	f	k	13913
.	c	l	14250
. . . d	b	m	19104
.	n	20366	v

Bitmap sizes are 251, 101 and 31 pixels square, South up. The keys to the right refer to the 1st two bitmaps. The numbers in the key are those in my catalogue 'starlistA'

Data and comments on star a02467

SWid: a02467 / **USNO id: 3588 922001 / other id: TYC 3588 9220 1**

Co-ordinates, x,y in image z1051: 2002.8 1657.6

J2000 sky co-ordinates: 21 8 12.39 +46 13 54.59

CMC r'magnitude and 2MASS J,H,K magnitudes: 11.991 11.354 11.331 11.312

USNO B1.0 magnitudes, B1,R1,B2,R2,I2: 11.75 11.73 11.75 11.73 11.74

Misc comments :

11/6/07 lovely eb, mins .234 and .132 mag, period vc 1.6121, found by rroverlay , sl prox

This star has a very interesting top shape, well reproduced in both v and z

The astep was wrong and was changed from .408 12854 to .441 9600, Book 21, p4

Comparison reference star(s) co-ordinates:

a00138: 21 7 56.04 +46 14 26.41

Need CMC mags and must do real time plots , see 278

Te 9600 deg K from internal data, from J-H, 7580

Reminder:

All dates, JD and HJD are from Jan 1st 2000

season 1: dates 1316 to 1553 is 9/8/2003 to 3/4/2004 **(a)**

season 2: dates 1696 to 1838 is 23/8/2004 to 12/01/2005 **(z)**

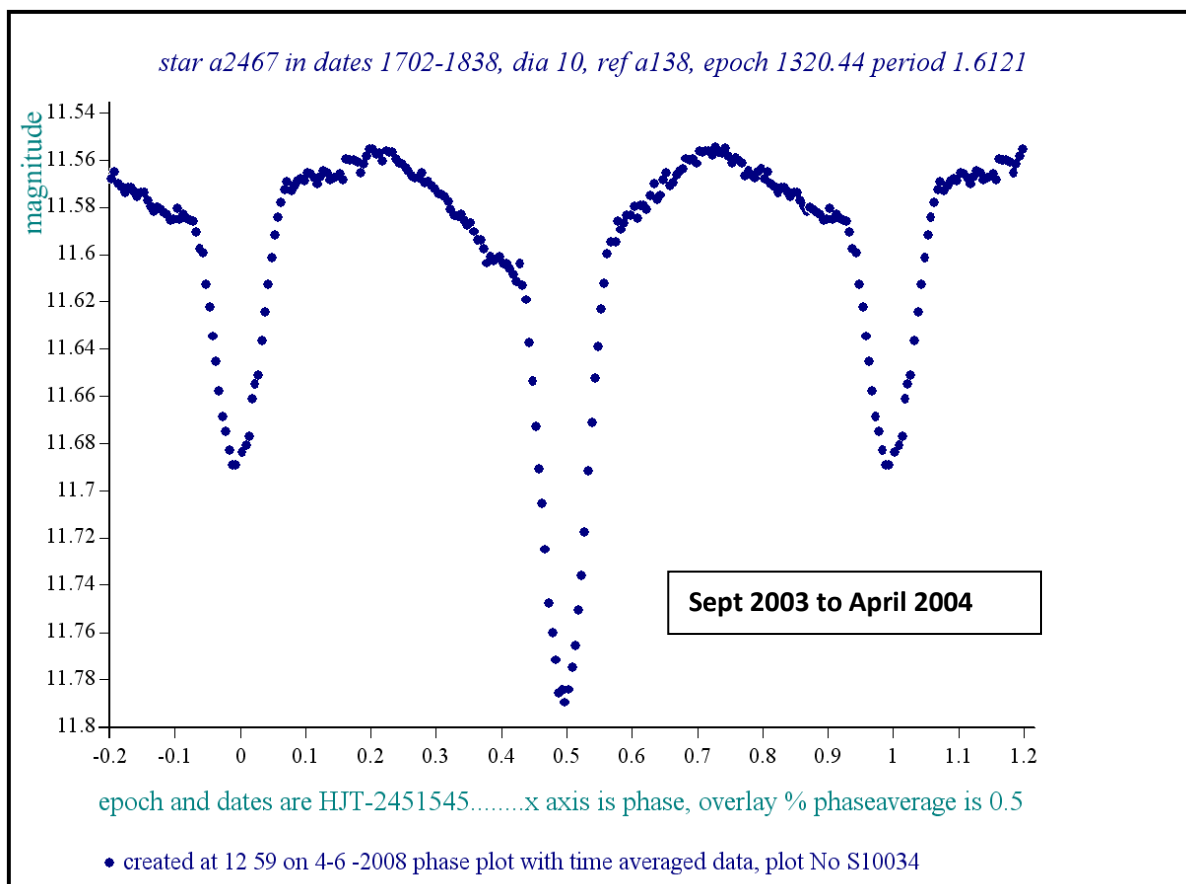
season 3: dates 2085 to 2177 is 16/9/2005 to 17/12/2005 **(y)**

season 4: dates 2442 to 2755 is 8/9/2006 to 19/7/2007 **(w)**

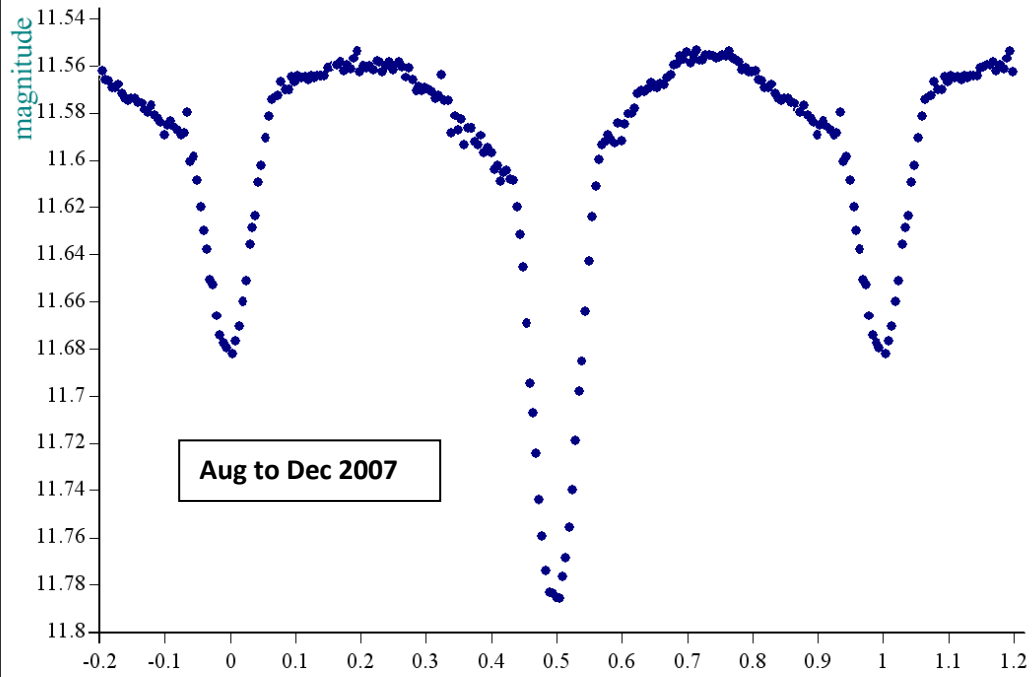
season 5: dates 2772 to 2903 is 4/8/2007 to 13/12/2007 **(v)**

season 6: dates 2930 to 3266 is 9/1/2008 to 10/12/2008 **(u)**

season 7: dates 3403 to 3539 is 26/4/2009 to 10/9/2009 **(t)**



star a2467 in dates 2772-2903, dia 10, ref a138, epoch 1320.44 period 1.6121



epoch and dates are HJT-2451545.....x axis is phase, overlay % phaseaverage is 0.5

• created at 13 15 on 4-6 -2008 phase plot with time averaged data, plot No S10036