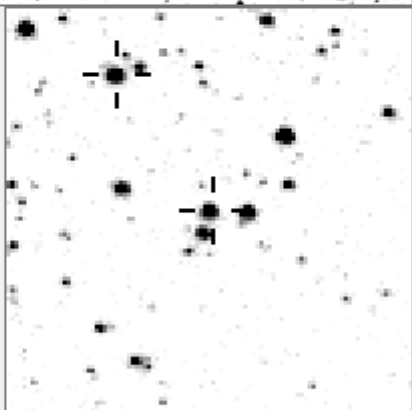
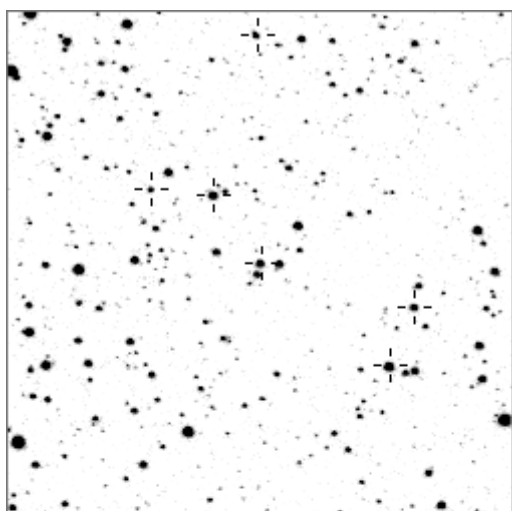


a03750



variables & brighter stars

. . . f . . . m	O	3750	v
c	a	416	v
.	b	540	v
.	c	890	
.	d	990	
. n . h	e	1120	
.	f	1664	
. e O	g	1713	v
.	h	1892	v
i .	i	1974	
. j	j	2106	
.	k	3277	v
a d	l	4862	v
.	m	10649	v
.	n	11953	v

c .	O	3750	v
.	a	1892	v
. j	b	2745	
.	h	3668	
.	b	4210	
.	e	5999	
. e	f	6624	
. O d	g	10175	
m f	h	12532	
. n	i	12663	
.	j	13136	
. l	k	15269	
.	l	17117	
. i	m	20557	
.	n	20782	

Bitmap sizes are 251, 101 and 31 pixels square, South up. The keys to the right refer to the 1st two bitmaps. The numbers in the key are those in my catalogue 'starlistA'

Data and comments on star a03750

SWid: a03750 / **USNO id: 1365 399961 / other id:**

Co-ordinates, x,y in image z1051: 2159.6 2154.6

J2000 sky co-ordinates: **21 8 48.43 +46 33 41.22**

CMC r'magnitude and 2MASS J,H,K magnitudes: 12.42 11.025 10.728 10.656

USNO B1.0 magnitudes, B1,R1,B2,R2,I2: 14.05 11.93 13.91 12.03 11.42

Misc comments :

Sep 08 eb, magr to 89 is 0.110 and magm 12.18, period 2.11812d, int shape

Comparison reference star(s) co-ordinates:

a00089: **21 8 17.94 +46 25 32.56**

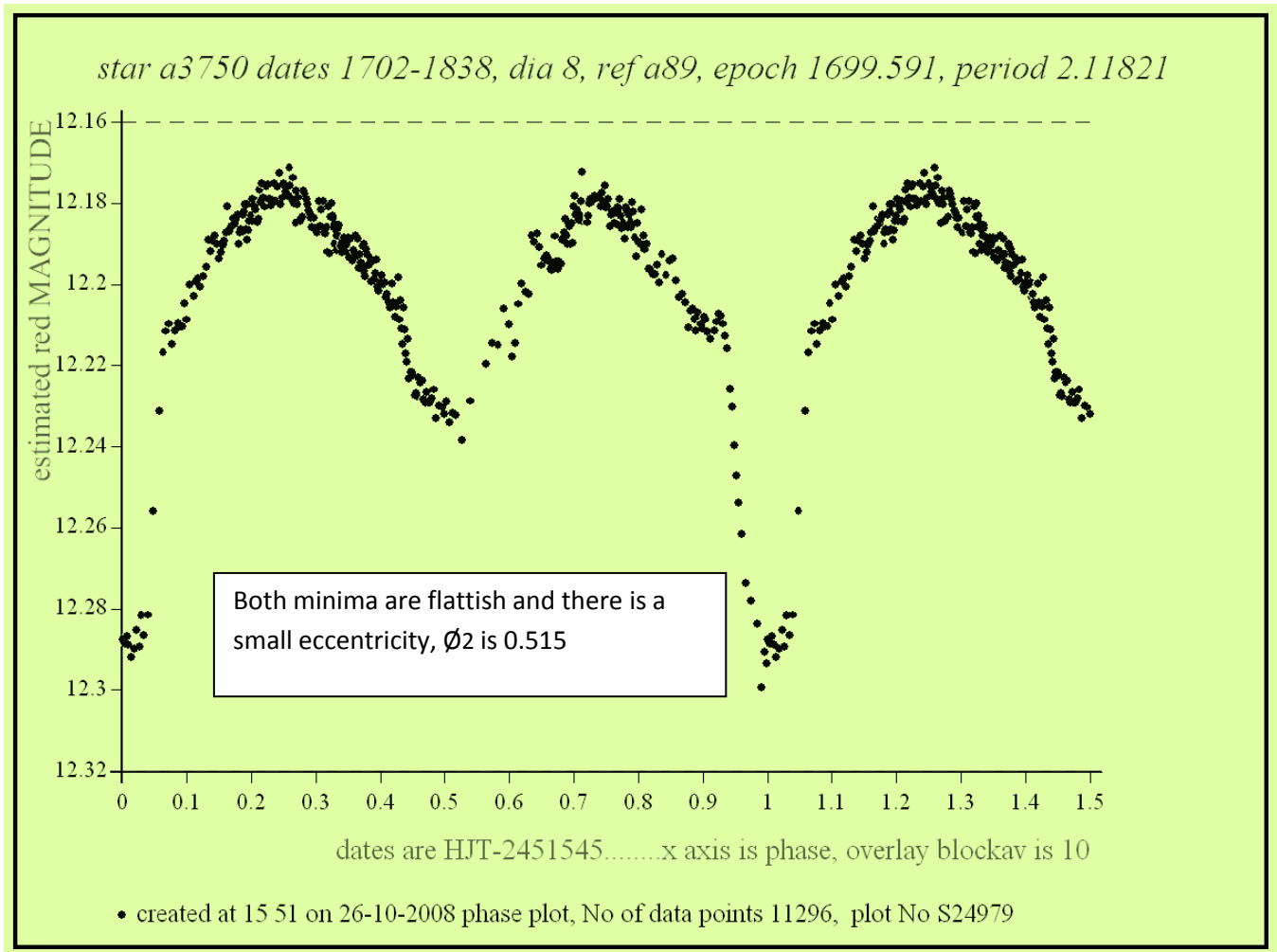
colour temperature estimate: 5873K

Reminder:

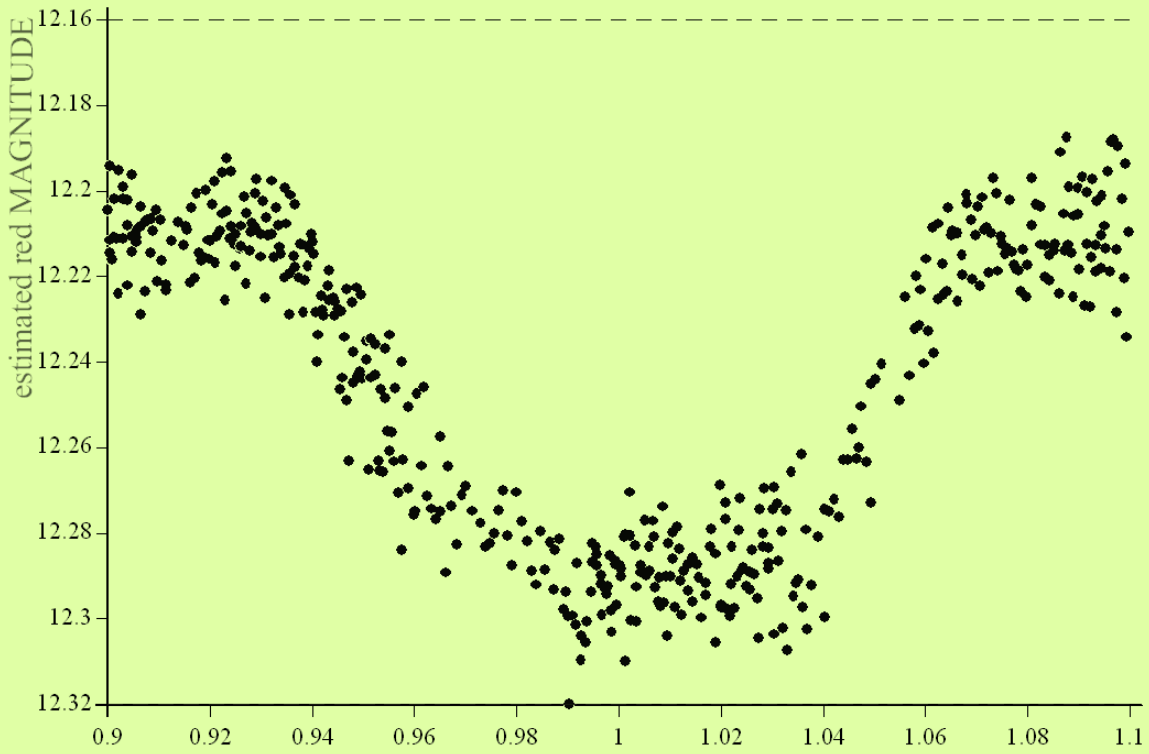
All dates, JD and HJD are from Jan 1st 2000

- season 1: dates 1316 to 1553 is 9/8/2003 to 3/4/2004 (a)
- season 2: dates 1696 to 1838 is 23/8/2004 to 12/01/2005 (z)
- season 3: dates 2085 to 2177 is 16/9/2005 to 17/12/2005 (y)
- season 4: dates 2442 to 2755 is 8/9/2006 to 19/7/2007 (w)
- season 5: dates 2772 to 2903 is 4/8/2007 to 13/12/2007 (v)
- season 6: dates 2930 to 3266 is 9/1/2008 to 10/12/2008 (u)
- season 7: dates 3403 to 3539 is 26/4/2009 to 10/9/2009 (t)

Needs CMC mags

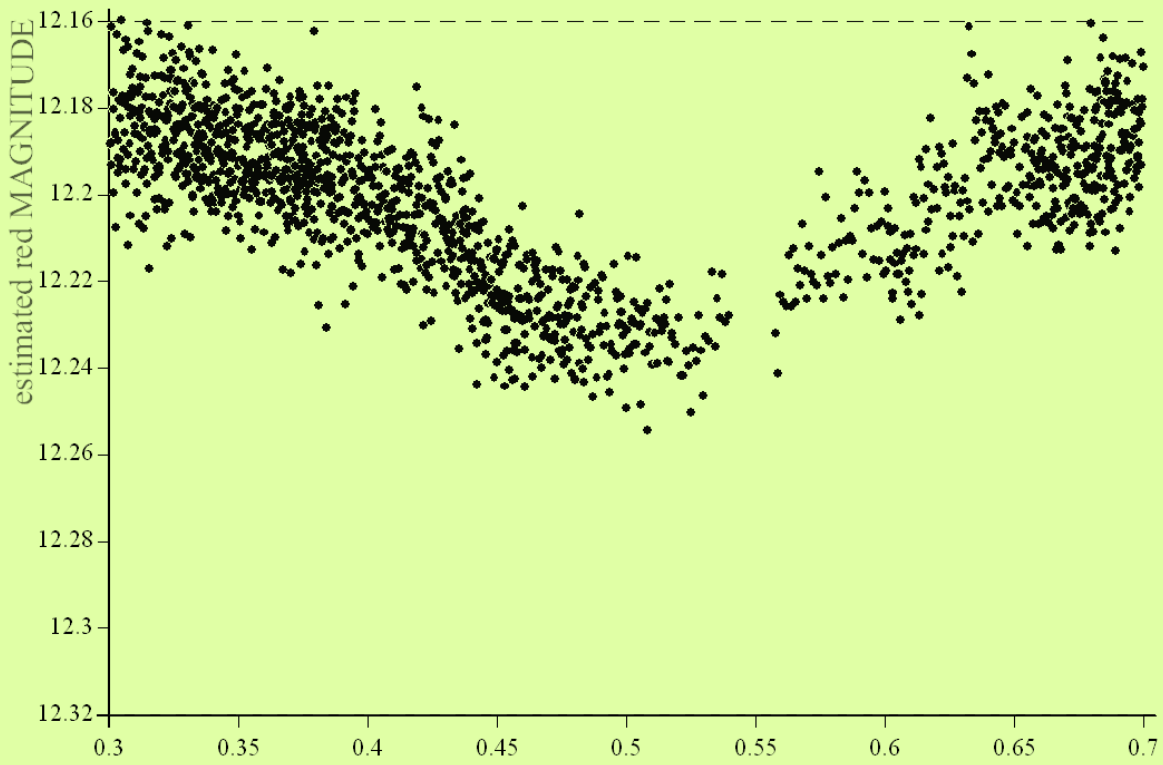


star a3750 dates 1702-1838, dia 8, ref a89, epoch 1699.591, period 2.11821



• created at 15 50 on 26-10-2008 phase plot, No of data points 11296, plot No S24978

star a3750 dates 1702-1838, dia 8, ref a89, epoch 1699.591, period 2.11821



dates are HJT-2451545.....x axis is phase, overlay blockav is 10

• created at 15 56 on 26-10-2008 phase plot, No of data points 11296, plot No S24984