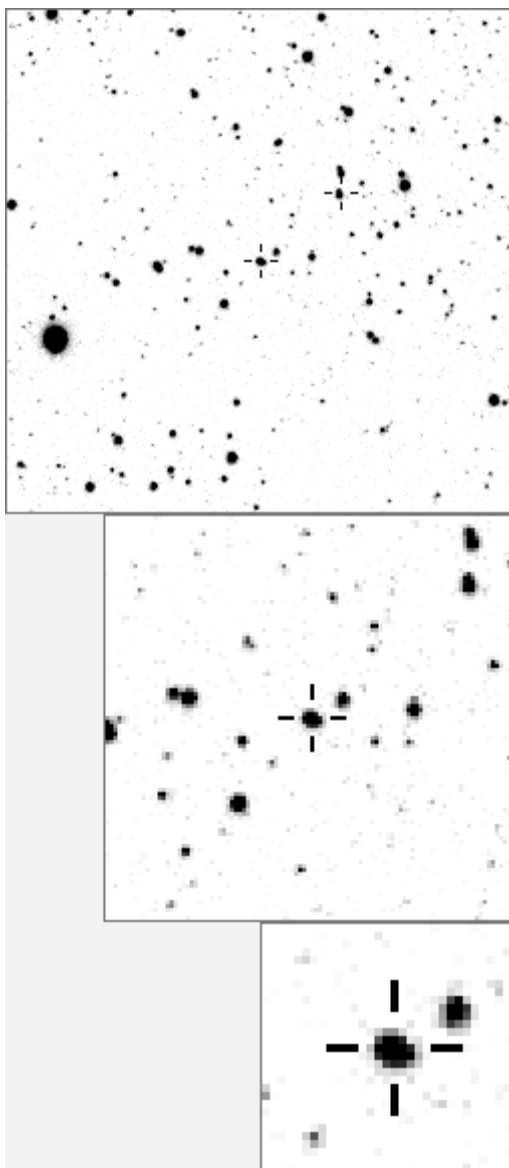


a04028



variables & brighter stars			
. m	O	4028	v
. c	a	237	
.	b	1089	
.	c	1167	
.	d	1274	
f n . b	e	1304	
.	f	2228	
. g l . O	g	2677	
. k	h	2714	
.	i	3000	
. a	j	3151	
. e	k	3483	
. j	l	3874	
. d	m	4830	
. . h	n	5948	v

. h .	O	4028	v
. c .	a	3483	
. d .	b	3874	
.	c	5750	
. l	d	5948	v
. k	e	6740	
. g b f	f	7969	
. O . . e	g	10080	
. i . . n	h	14020	
.	i	16500	
. . m . a	j	19645	
.	k	20019	
. j	l	20964	
.	m	21088	
.	n	21334	

Bitmap sizes are 251, 101 and 31 pixels square, South up. The keys to the right refer to the 1st two bitmaps. The numbers in the key are those in my catalogue 'starlistA'. Stars marked with a cross have been found to be variable.

Data and comments on star a04028

SWid: a04028 / USNO id: 0 0 / other id: GSC 3592-0209

Co-ordinates, x,y in image z1051: 2302.1 3189.5

J2000 sky co-ordinates: 21 9 21.65 +47 14 44.84

CMC r'magnitude and 2MASS J,H,K magnitudes: 12.779 11.131 10.877 10.713

USNO B1.0 magnitudes, B1,R1,B2,R2,I2: 0 0 0 0 0

Misc comments :

EB I presume. Step all wrong at 0.417 (T=11732), incremented it to 0.550 (T=5449) and a range goes down from 0.716mag to 0.427. Very interesting shape of phase plot, with bumps. They are clearly seen in the 'z' and 'v' plots and retain their places. To 92, magm 12.260, magr 0.42 in 2004/5
Not edgy 2303 /3190

Comparison reference star(s) co-ordinates:

a01089: 21 9 38.51 +47 13 14.1

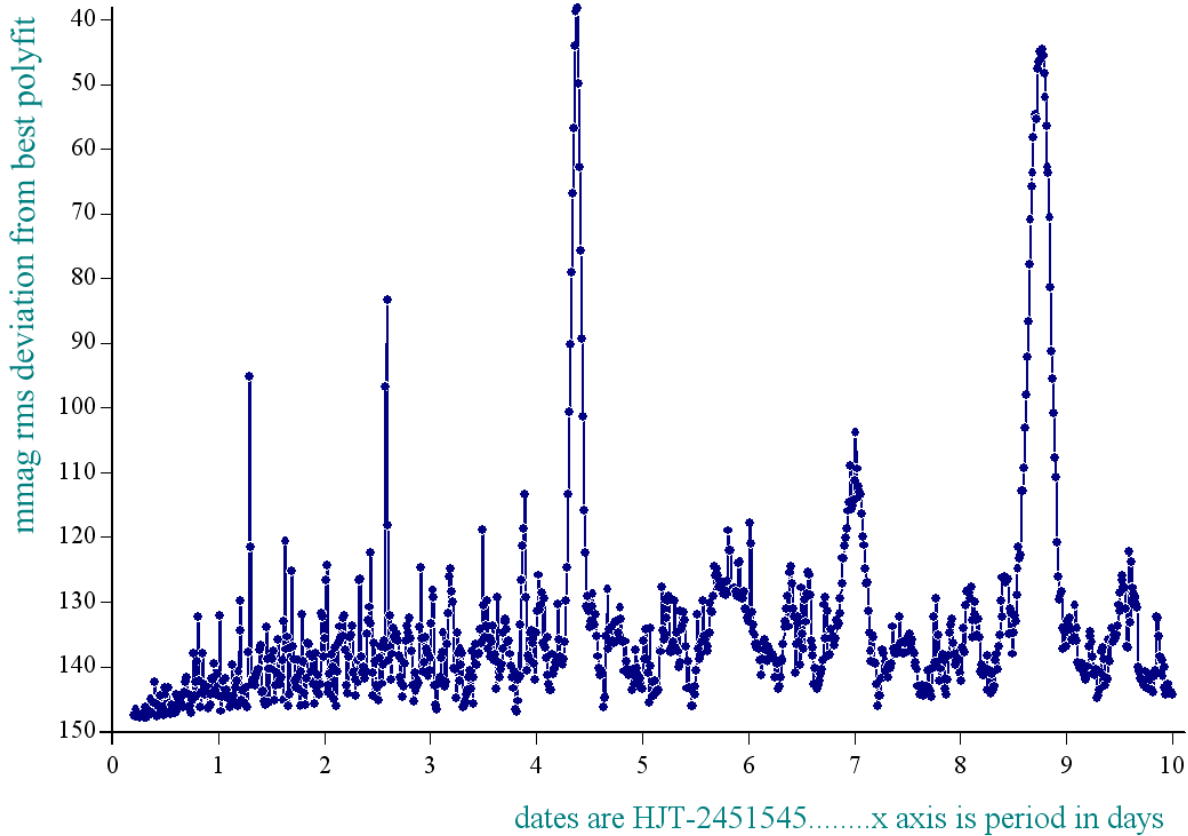
Reminder:

All dates, JD and HJD are from Jan 1st 2000

season 1: dates 1316 to 1553 is 9/8/2003 to 3/4/2004	(a)
season 2: dates 1696 to 1838 is 23/8/2004 to 12/01/2005	(z)
season 3: dates 2085 to 2177 is 16/9/2005 to 17/12/2005	(y)
season 4: dates 2442 to 2755 is 8/9/2006 to 19/7/2007	(w)
season 5: dates 2772 to 2903 is 4/8/2007 to 13/12/2007	(v)
season 6: dates 2930 to 3266 is 9/1/2008 to 10/12/2008	(u)
season 7: dates 3403 to 3539 is 26/4/2009 to 10/9/2009	(t)

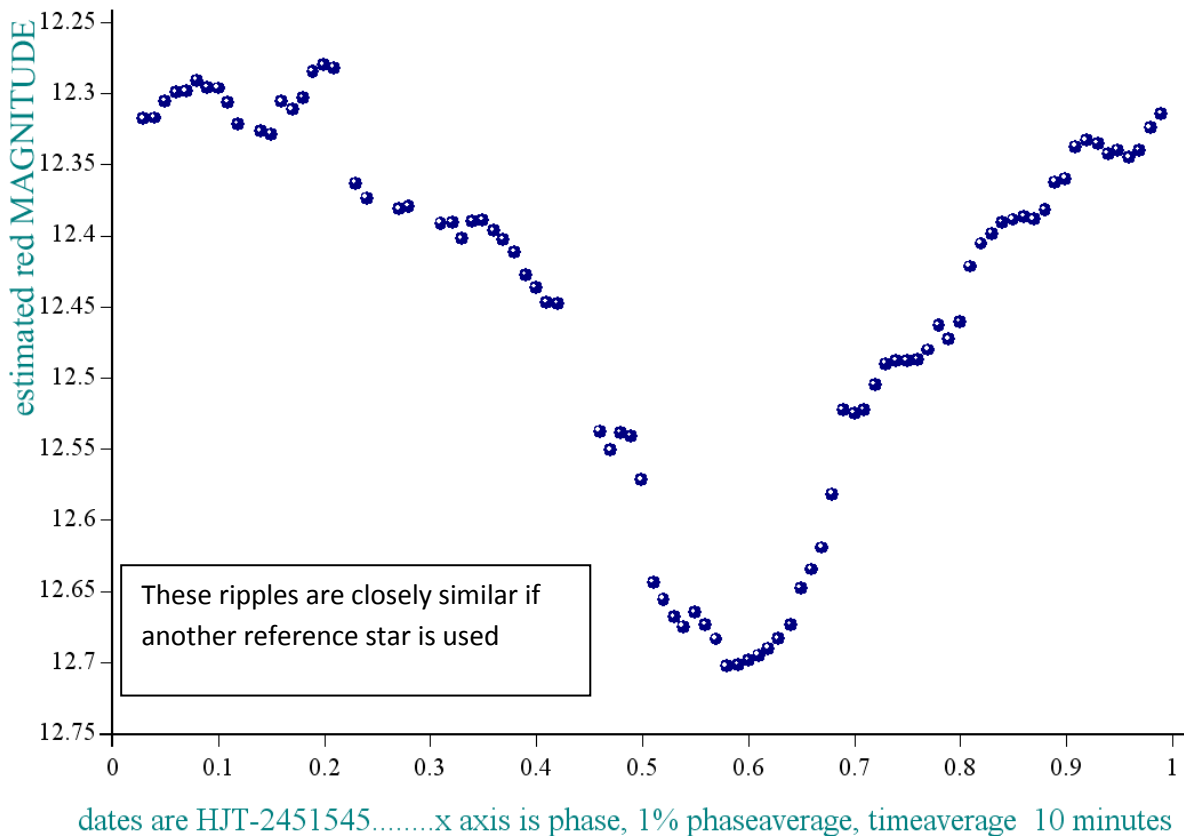
More work needed on this star, the bumps on the phase plots seem real but what about twice the period?

periodogram of star a4028 in dates 1702-1838, dia 8, ref a1089



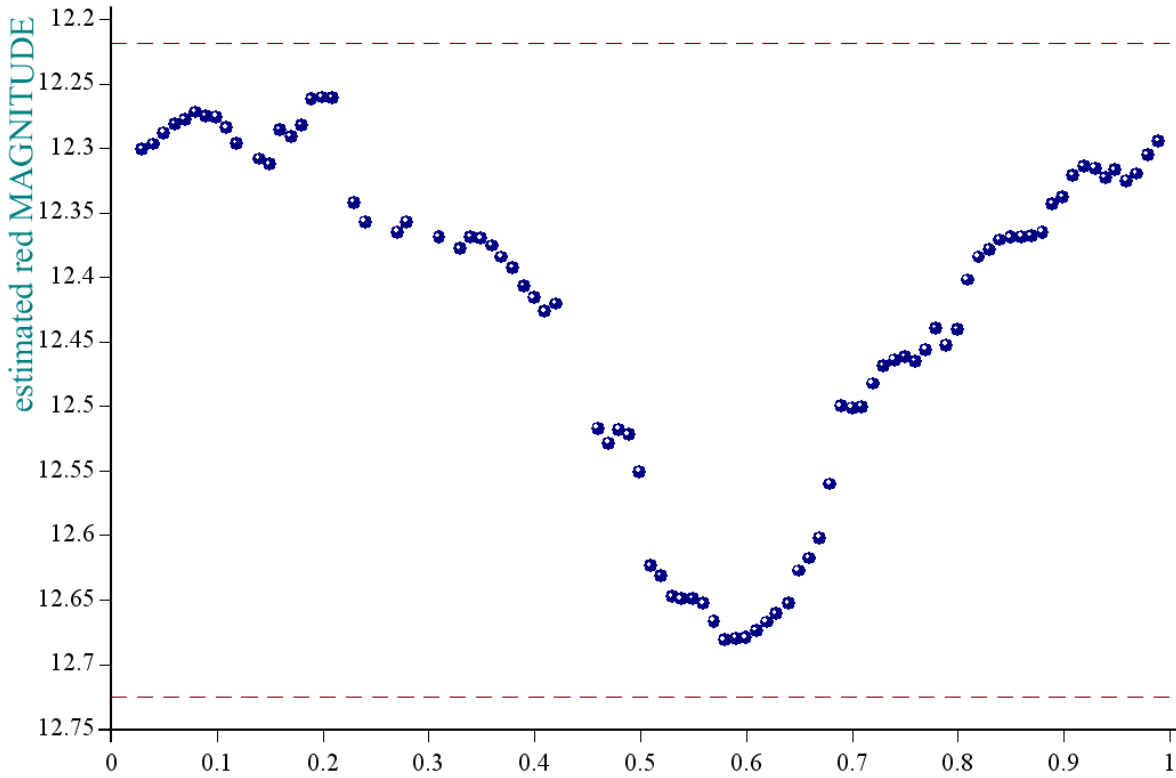
—●— created at 18 20 on 5-7 -2008 periodogram, No of data points 11228, plot No S13817

star a4028 in dates 1702-1838, dia 8, ref a1089, epoch is 1319.5, period is 4.3771



● created at 19 19 on 5-7 -2008 phase plot, No of data points 11228, plot No S13963

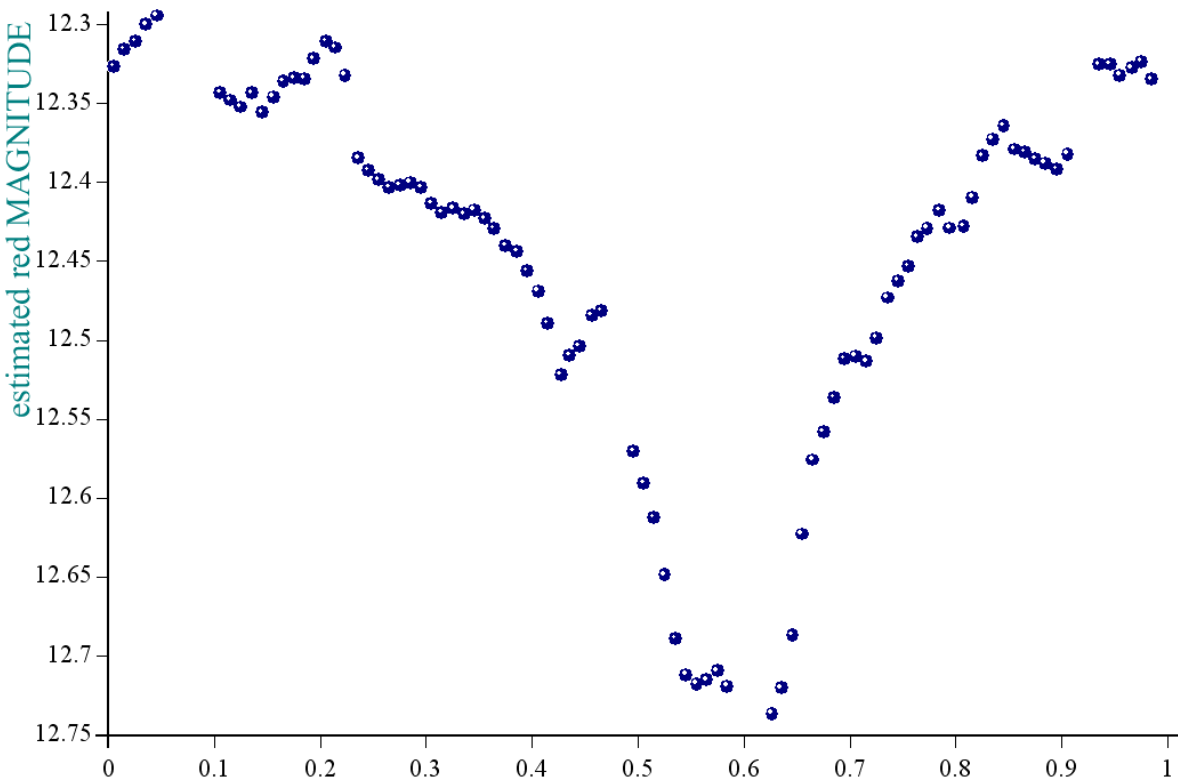
star a4028 in dates 1702-1838, dia 10, ref a92, epoch is 1319.5, period is 4.3771



dates are HJT-2451545.....x axis is phase, 1% phaseaverage, timeaverage 10 minutes

• created at 19 27 on 5-7 -2008 phase plot, No of data points 11261, plot No S13968

star a4028 in dates 2772-2903, dia 8, ref a1089, epoch is 1319.5, period is 4.3771



dates are HJT-2451545.....x axis is phase, 1% phaseaverage, timeaverage 10 minutes

• created at 19 17 on 5-7 -2008 phase plot, No of data points 10900, plot No S13962