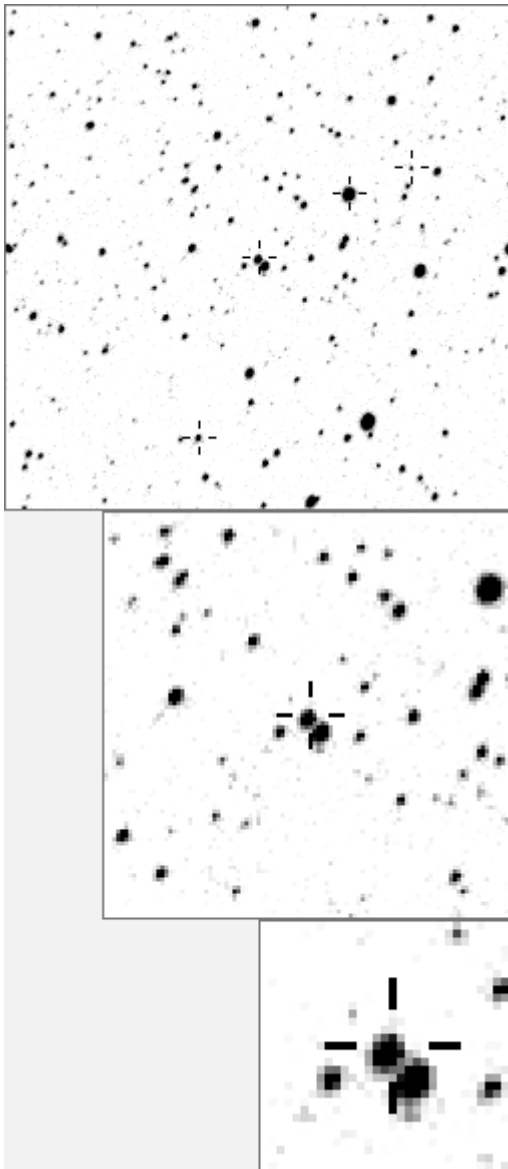


a04295



variables & brighter stars

. i	O	4295	v
.	a	277	
. g	b	580	v
. j	c	850	
. n	d	1948	
. b	e	3127	
.	f	3193	
. h . e c . l	g	3900	
.	h	5998	
.	i	6182	
. f	j	6343	
.	k	6394	
. m a	l	6577	
.	m	10482	v
. d	n	21217	v

. l	O	4295	v
. i	a	580	v
. a	b	3127	
. f	c	5998	
. j	d	7537	
. .	e	8234	
. c d e	f	9062	
. O h	g	11789	
. b m	h	12909	
. .	i	13504	
. .	j	14053	
. .	k	14389	
g .	l	14791	
. k n	m	15282	
. .	n	15303	

Bitmap sizes are 251, 101 and 31 pixels square, South up. The keys to the right refer to the 1st two bitmaps. The numbers in the key are those in my catalogue 'starlistA'. Stars marked with a cross have been found to be variable.

Data and comments on star a04295

SWid: a04295 / **USNO id: 1374 480245 / other id:**

Co-ordinates, x,y in image z1051: 1726.8 3462.4

J2000 sky co-ordinates: 21 7 6.84 +47 25 27.99

CMC r'magnitude and 2MASS J,H,K magnitudes: 12.532 11.404 11.238 11.119

USNO B1.0 magnitudes, B1,R1,B2,R2,I2: 0 11.43 13.57 11.25 11.38

Misc comments :

jl09 eb. I had its neighbour (3127) down as var also but from 33 plot it is clear that it is this one only, **To ref 850, very approx figures 11.61 160?mmag, p=1.3561d- template measurements needed**

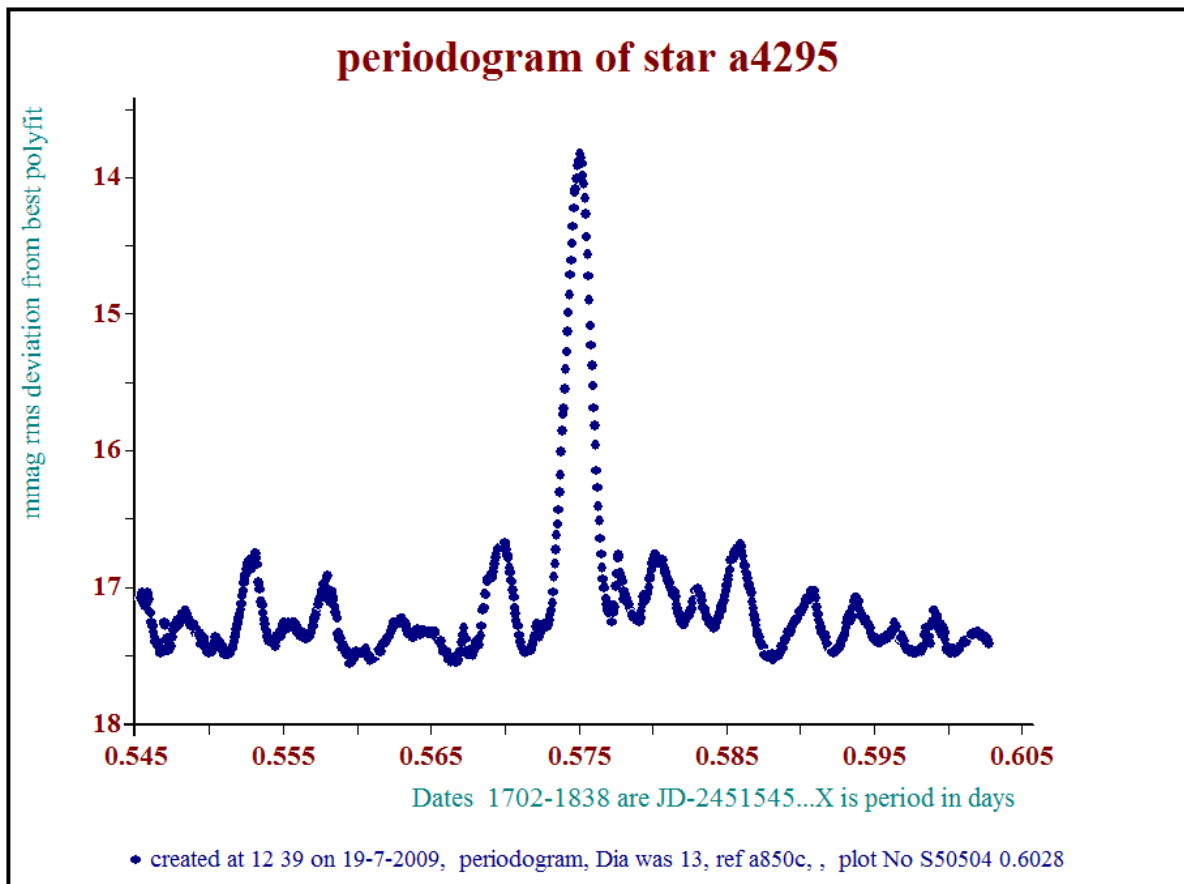
Comparison reference star(s) co-ordinates:

a00850: 21 7 25.76 +47 25 42.03

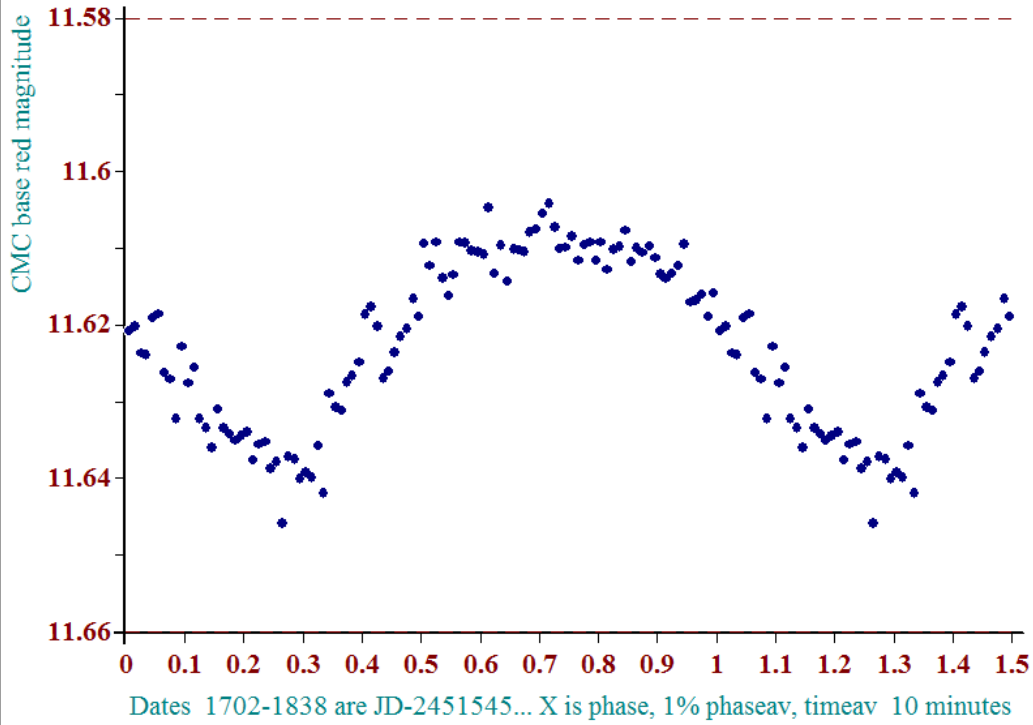
Reminder:

All dates, JD and HJD are from Jan 1st 2000

- season 1: dates 1316 to 1553 is 9/8/2003 to 3/4/2004 (a)
- season 2: dates 1696 to 1838 is 23/8/2004 to 12/01/2005 (z)
- season 3: dates 2085 to 2177 is 16/9/2005 to 17/12/2005 (y)
- season 4: dates 2442 to 2755 is 8/9/2006 to 19/7/2007 (w)
- season 5: dates 2772 to 2903 is 4/8/2007 to 13/12/2007 (v)
- season 6: dates 2930 to 3266 is 9/1/2008 to 10/12/2008 (u)
- season 7: dates 3403 to 3539 is 26/4/2009 to 10/9/2009 (t)

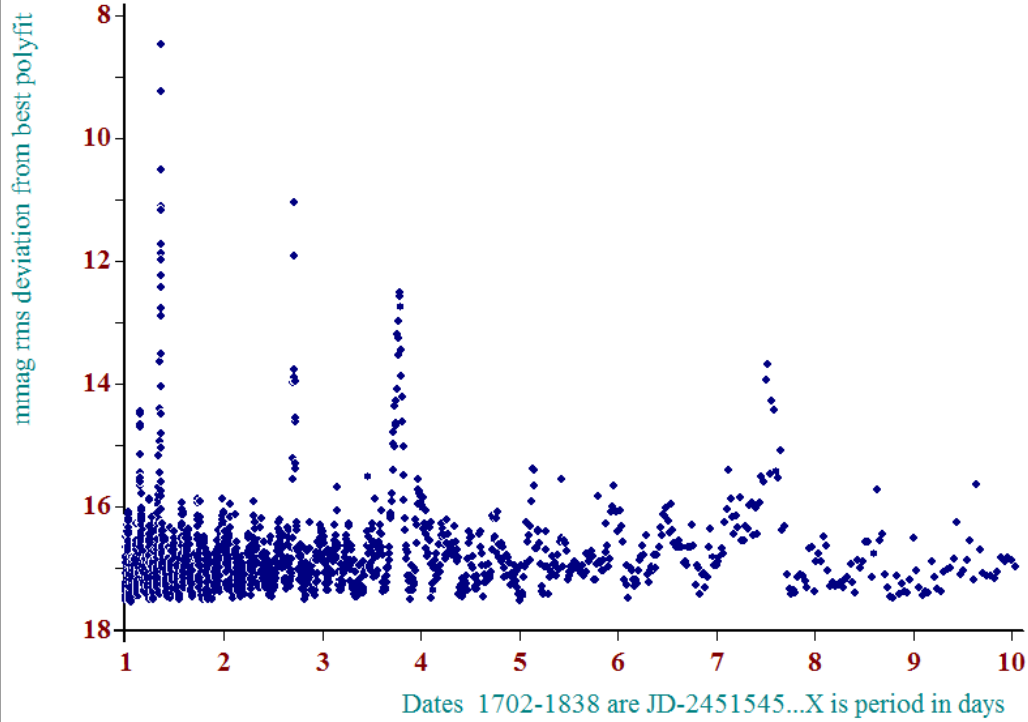


Phase Plot, Star a4295 period 0.575d



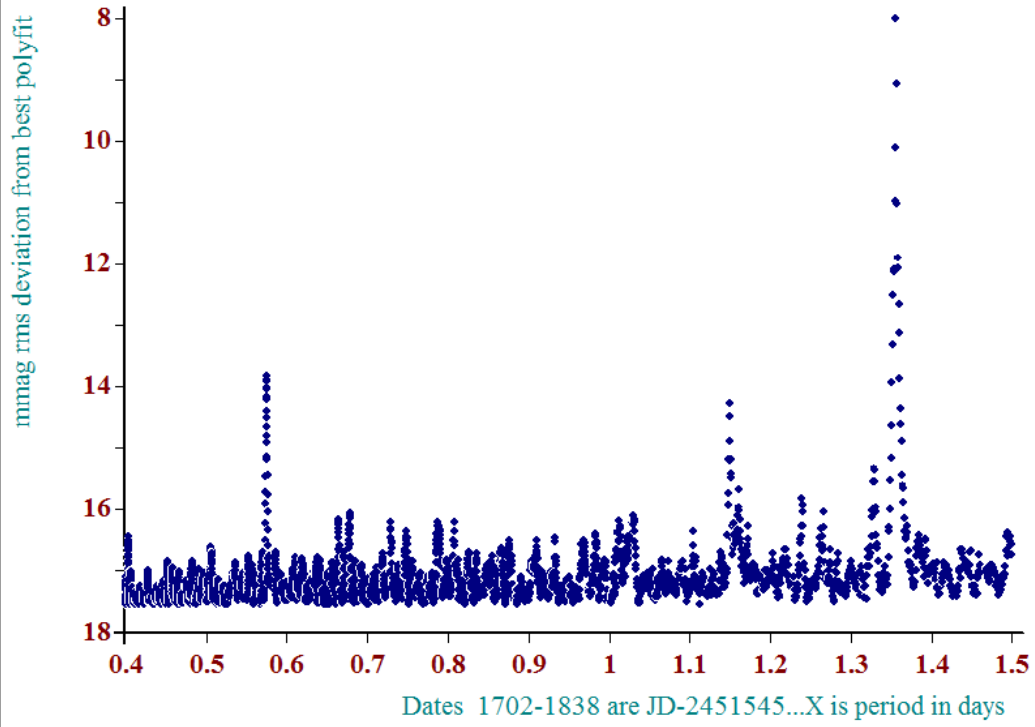
• created at 12 44 on 19-7-2009, phase plot, Dia was 13, ref a850c, epoch 1300, plot No S50506 0.575

periodogram of star a4295



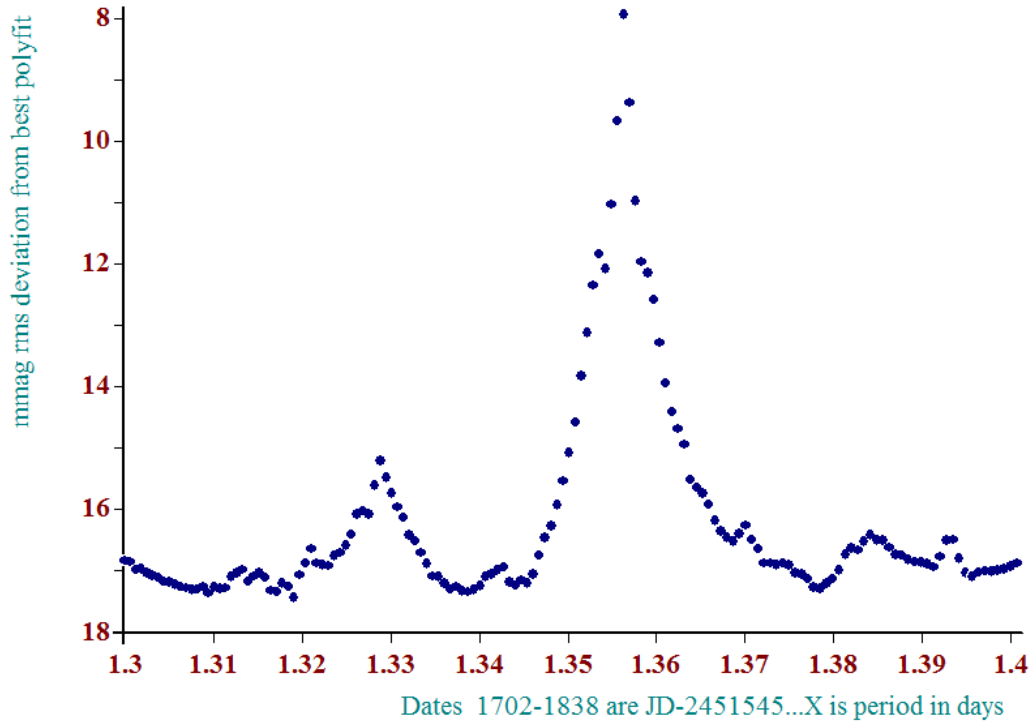
• created at 12 48 on 19-7-2009, periodogram, Dia was 13, ref a850c, , plot No S50507 10.0371

periodogram of star a4295



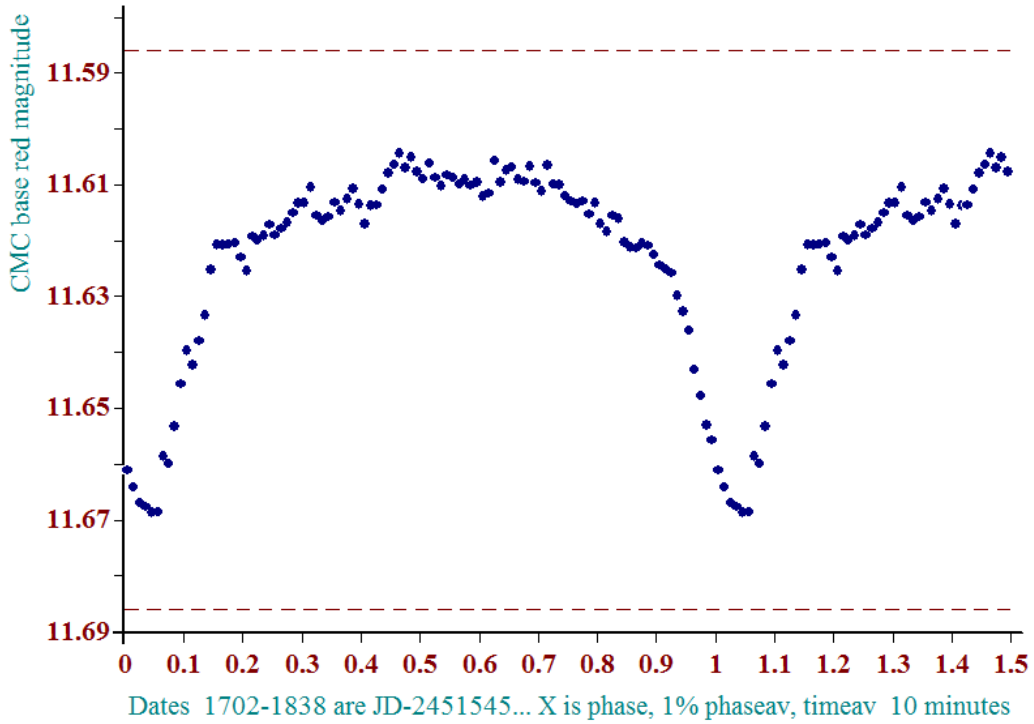
♦ created at 12 51 on 19-7-2009, periodogram, Dia was 13, ref a850c, , plot No S50509 1.5004

periodogram of star a4295



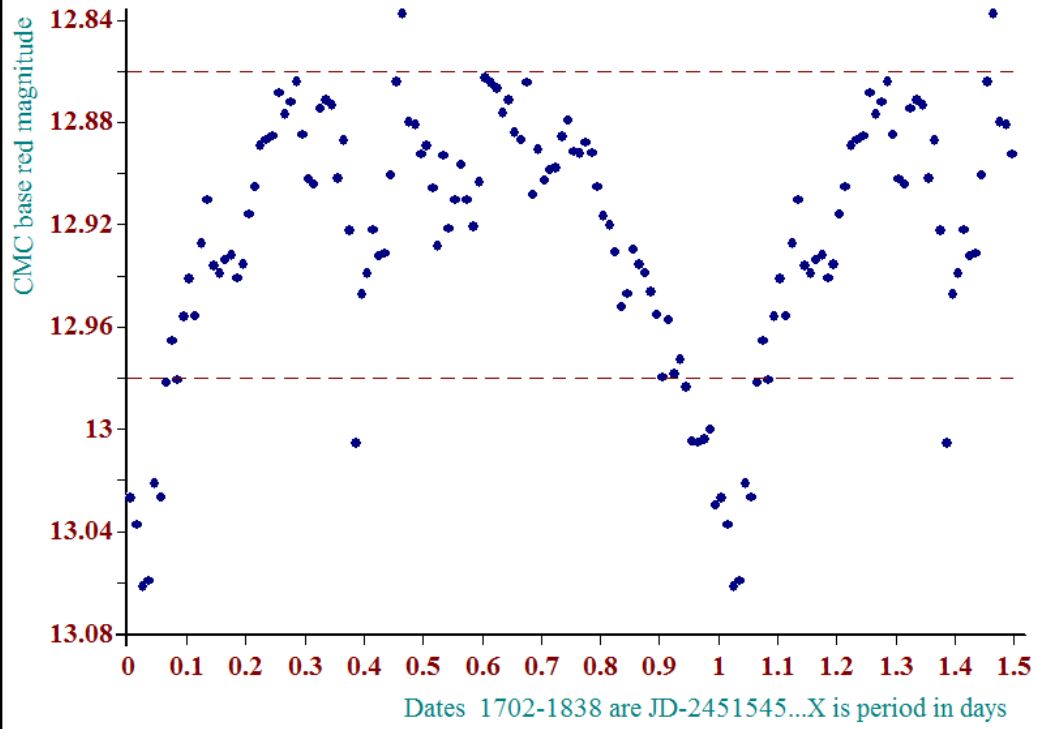
• created at 12 52 on 19-7-2009, periodogram, Dia was 13, ref a850c, , plot No S50511 1.4007

Phase Plot, Star a4295 period 1.3561d



• created at 12 53 on 19-7-2009, phase plot, Dia was 13, ref a850c, epoch 1300, plot No S50513 1.3561

Phase Plot, Star a4295 period 1.3562d



• created at 16 13 on 19-7-2009, phase plot, Dia was 33, ref a850c, epoch 1300, plot No S50526 1.3562