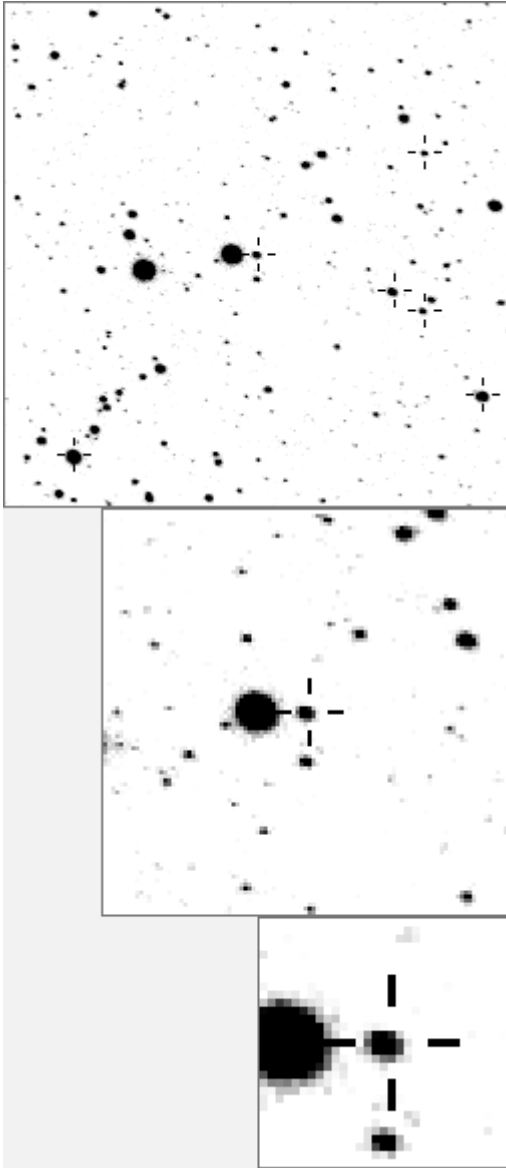


a04813



variable and brighter stars					
.	O	4813 v		
.	a	251 v		
.	b	952		
.	f	1233 v		
.	m	1455		
n	e	2009		
.	d	h	2711		
.	O	3012		
.	j	3139		
.	l	3253		
.	e	j 3730 v		
.	c	k 5639 v		
.	g	l 6884 v		
.	i a	m 11174 v		
.	k	n 18258 v		

.	h	b	O	4813 v
.	a	3139
.	b	4848
.	c	11210
.	g	e	a	d 11397
.	e 12887
.	f 15418
.	i	O	g 19488
l	k	h 20160
.	j	d	i 21544
.	m	j 22543
.	k 22880
.	l 23835
.	n	m 26256
.	f	n 27583

Bitmap sizes are 251, 101 and 31 pixels square, South up. The keys to the right refer to the 1st two bitmaps. The numbers in the key are those in my catalogue 'starlistA'. Stars marked with a cross have been found to be variable.

Data and comments on star a04813

SWid: a04813 / **USNO id: 1367 423415 / other id: GSC 3589-0613**

Co-ordinates, x,y in image z1051: 3335.6 2488.7

J2000 sky co-ordinates: 21 13 20.94 46 46 35.96

CMC r'magnitude and 2MASS J,H,K magnitudes: 12.551 11.616 11.482 11.412

USNO B1.0 magnitudes, B1,R1,B2,R2,I2: 13.14 11.41 11.72 11.41 11.66

Misc comments :

Mins 4813 p yield a period of 2.158568 (using 2.000002 period mins 4813),
Close to R's value of 2.15858

Comparison reference star(s) co-ordinates:

60: 21 12 6.61 46 49 29.38

The two bright stars to the left of 4813 do not appear in the listing because they are too bright (partly saturated) to be included in the catalogue.

Image co-ordinates in z1051: 3336 2489

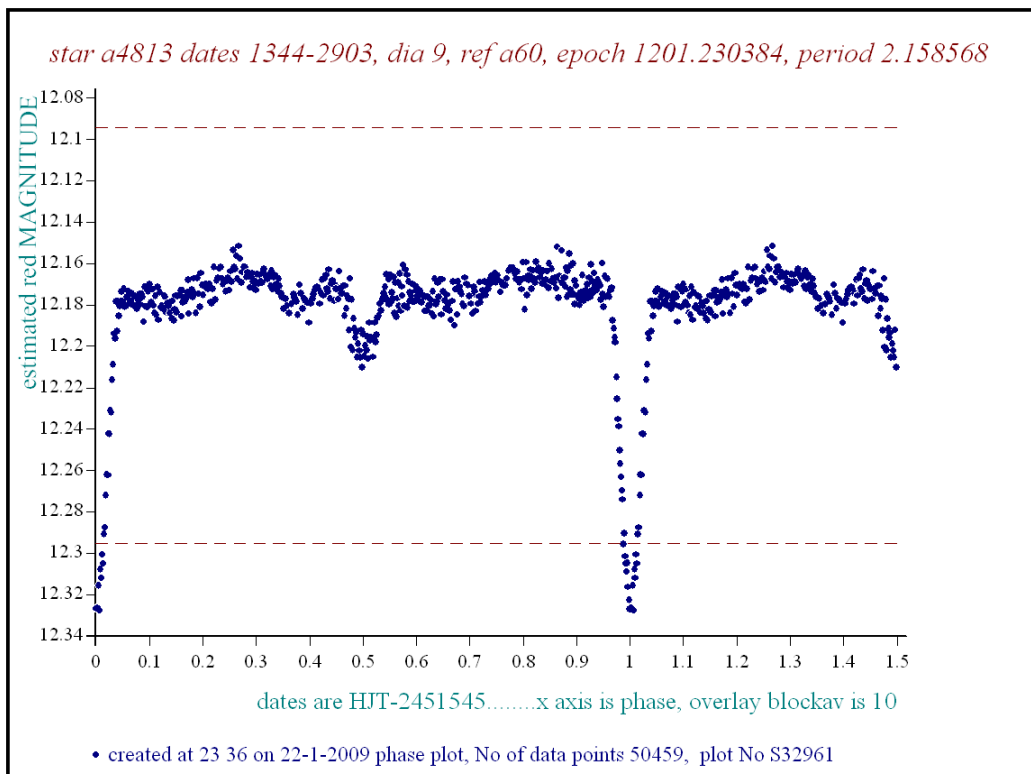
colour temp estimate: 7483 K

Reminder:

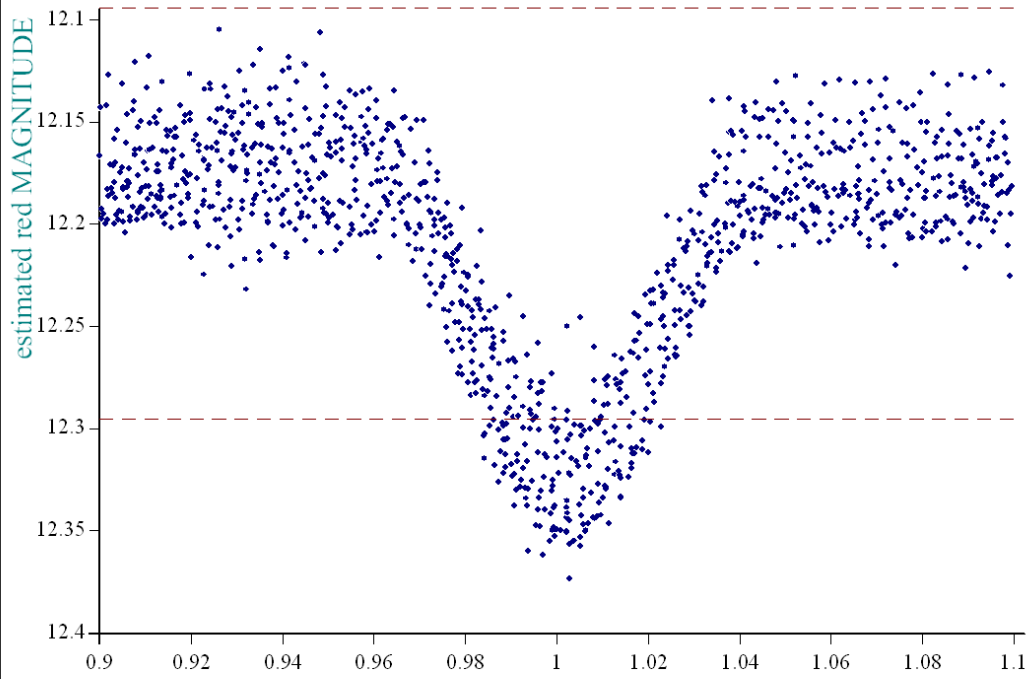
All dates, JD and HJD are from Jan 1st 2000

season 1: dates 1316 to 1553 is 9/8/2003 to 3/4/2004	(a)
season 2: dates 1696 to 1838 is 23/8/2004 to 12/01/2005	(z)
season 3: dates 2085 to 2177 is 16/9/2005 to 17/12/2005	(y)
season 4: dates 2442 to 2755 is 8/9/2006 to 19/7/2007	(w)
season 5: dates 2772 to 2903 is 4/8/2007 to 13/12/2007	(v)
season 6: dates 2930 to 3266 is 9/1/2008 to 10/12/2008	(u)
season 7: dates 3403 to 3539 is 26/4/2009 to 10/9/2009	(t)

The first plot below is with Clip=1 data



star a4813 dates 1344-2903, dia 9, ref a60, epoch 1201.230384, period 2.158568



dates are HJT-2451545.....x axis is phase, overlay blockav is 10

• created at 23 38 on 22-1-2009 phase plot, No of data points 50459, plot No S32962