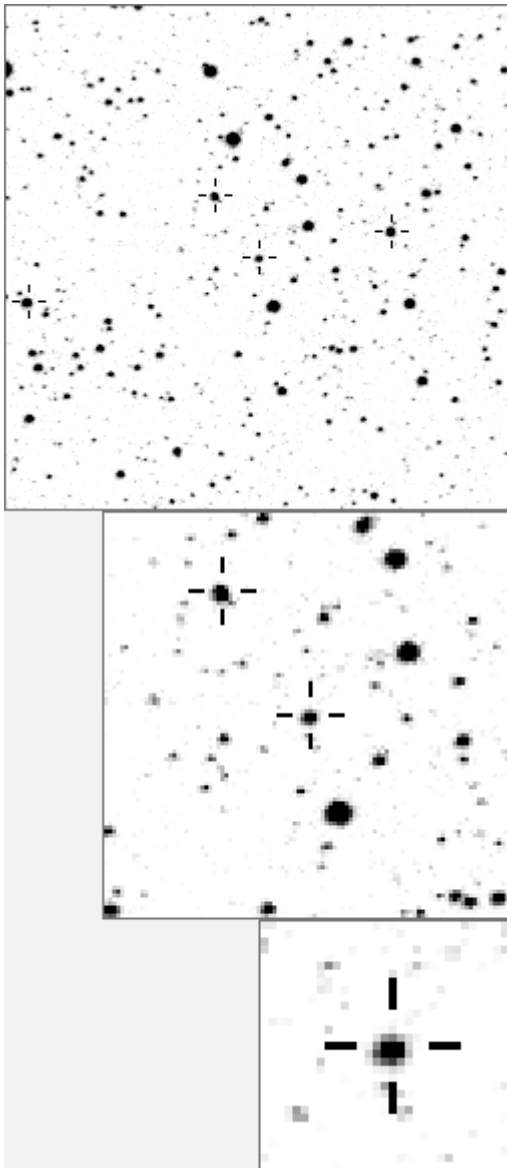


a07046



variable and brighter stars			
.	.	.	O 7046 v
.	.	.	a 484
.	.	.	b 782
.	.	.	c 811
.	.	.	d 1504
.	.	.	e 1636
.	.	.	f 2294 v
.	.	.	g 2301
.	.	.	h 2400
.	.	.	i 2546
.	.	.	j 3295 v
.	.	.	k 3646
.	.	.	l 3800
.	.	.	m 3962
.	.	.	n 5191 v
-----			
.	.	.	O 7046 v
.	.	.	a 782
.	.	.	b 1636
.	.	.	c 2400
.	.	.	d 5191 v
.	.	.	e 7294
.	.	.	f 7544
.	.	.	g 7650
.	.	.	h 8951
.	.	.	i 9112
.	.	.	j 11578
.	.	.	k 12192
.	.	.	l 12265
.	.	.	m 14789

Bitmap sizes are 251, 101 and 31 pixels square, South up.  
 The keys to the right refer to the 1<sup>st</sup> two bitmaps. The numbers in the key are those in my catalogue 'starlistA'.  
 Stars marked with a cross have been found to be variable.

**Data and comments on star a07046**

SWid: a07046 / **USNO id: 1361 395495 / other id: GSC 3588-8040**

Co-ordinates, x,y in image z1051: 1570.2 1463.2

**J2000 sky co-ordinates: 21 6 33.27 +46 6 6.22**

CMC r'magnitude and 2MASS J,H,K magnitudes: 13.032 11.801 11.524 11.434

USNO B1.0 magnitudes, B1,R1,B2,R2,I2: 14.04 12.77 14.49 12.82 13.19

Misc comments :

Temp estimate well out in adates, corrected step from 0.609 4436 to .515 6289 deg K.

Eclipsing binary, to 1504 magm 12.27, magr 0.49

WF

Comparison reference star(s) co-ordinates:

**a00124: 21 7 6.21 +46 17 12.24**

**a01504: 21 6 50.5 +46 7 0.38**

Reminder: **All dates, JD and HJD are from Jan 1<sup>st</sup> 2000**

season 1: dates 1316 to 1553 is 9/8/2003 to 3/4/2004 **(a)**

season 2: dates 1696 to 1838 is 23/8/2004 to 12/01/2005 **(z)**

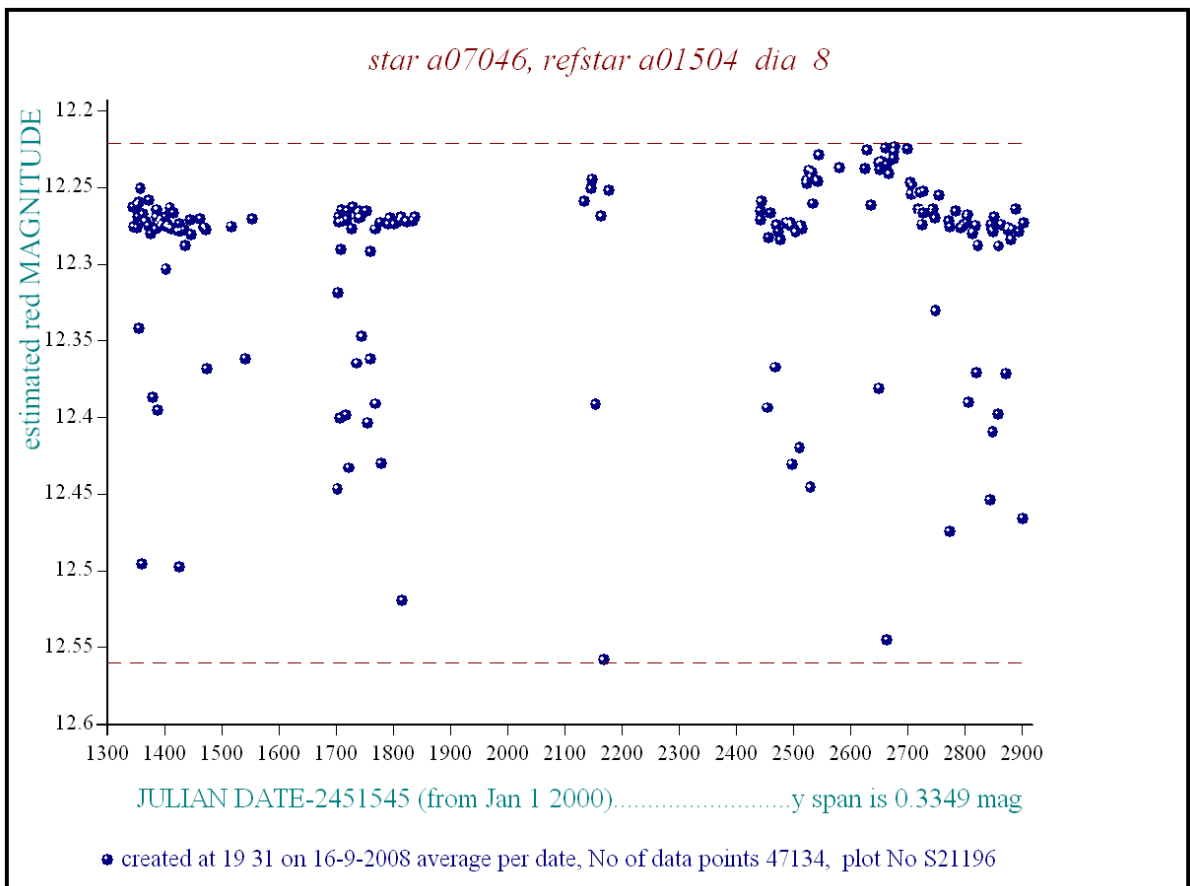
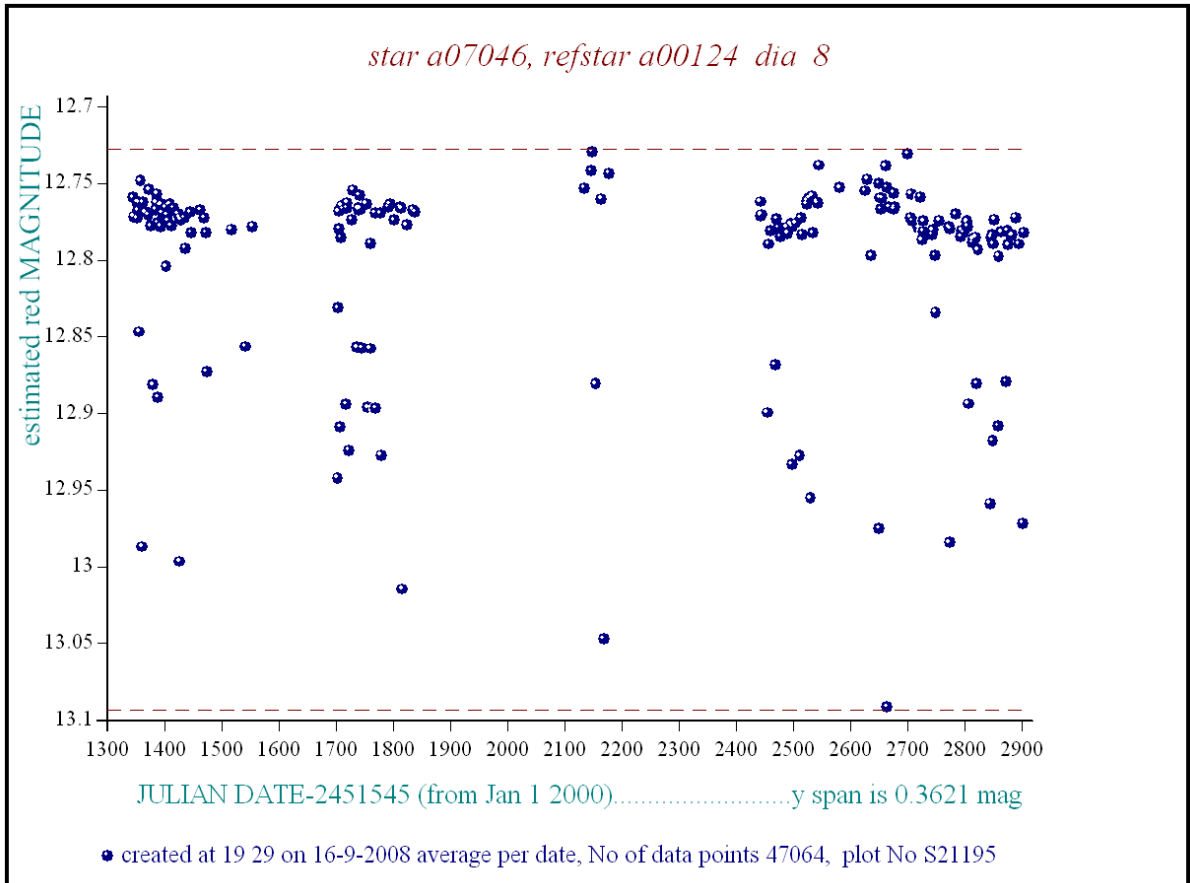
season 3: dates 2085 to 2177 is 16/9/2005 to 17/12/2005 **(y)**

season 4: dates 2442 to 2755 is 8/9/2006 to 19/7/2007 **(w)**

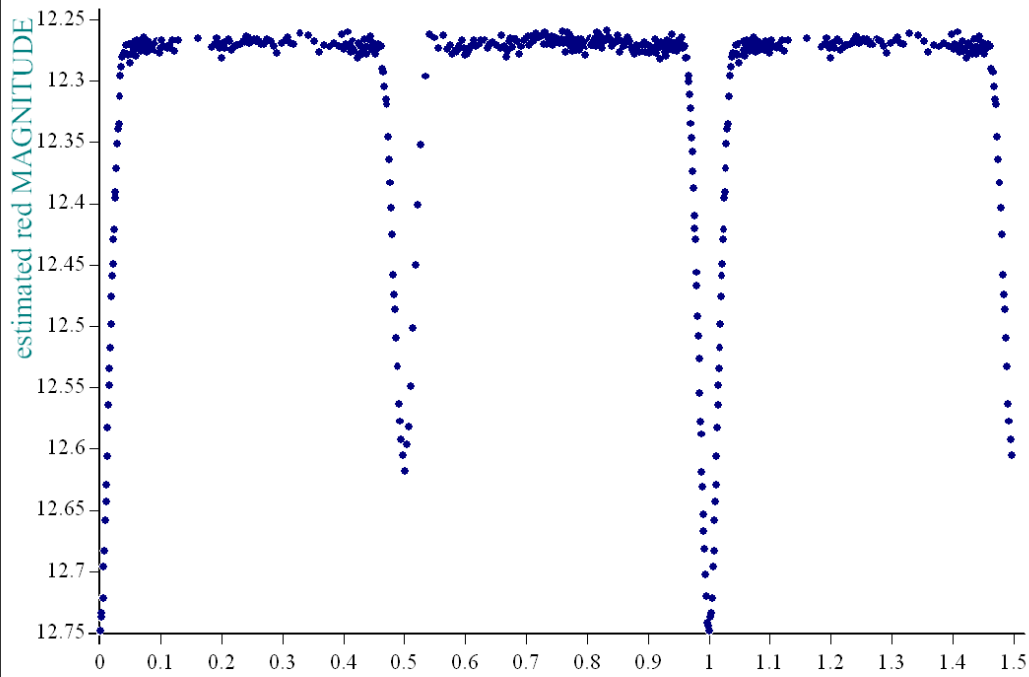
season 5: dates 2772 to 2903 is 4/8/2007 to 13/12/2007 **(v)**

season 6: dates 2930 to 3266 is 9/1/2008 to 10/12/2008 **(u)**

season 7: dates 3403 to 3539 is 26/4/2009 to 10/9/2009 **(t)**



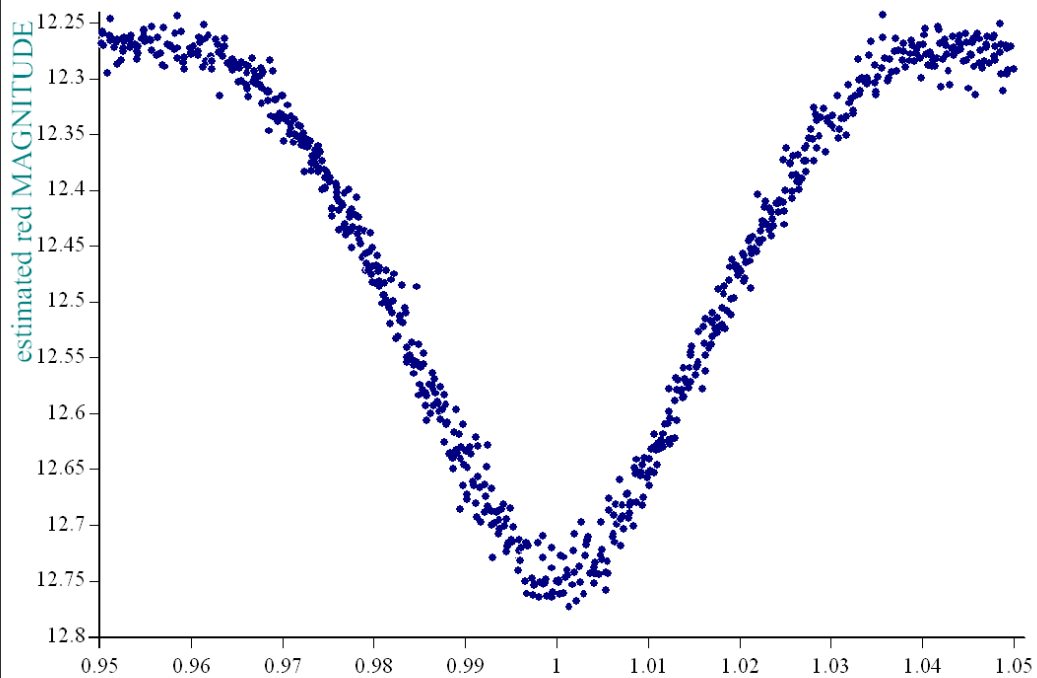
*star a7046 dates 1702-1838, dia 8, ref a1504, epoch 1218.7075, period 2.53218*



dates are HJT-2451545.....x axis is phase, overlay blockav is 10

• created at 0 41 on 17-9-2008 phase plot, No of data points 11438, plot No S21203

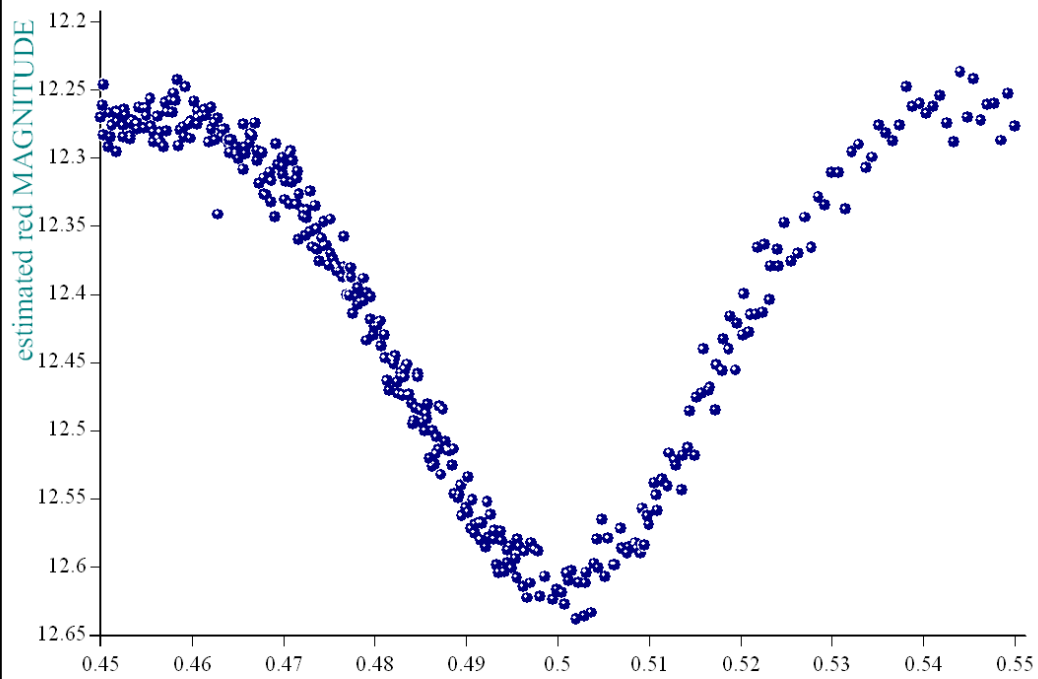
*star a7046 dates 1702-1838, dia 8, ref a1504, epoch 1218.7075, period 2.53218*



dates are HJT-2451545.....x axis is phase, overlay blockav is 10

• created at 0 42 on 17-9-2008 phase plot, No of data points 11438, plot No S21204

*star a7046 dates 1702-1838, dia 8, ref a1504, epoch 1218.7075, period 2.53218*



dates are HJT-2451545.....x axis is phase, overlay blockav is 10

• created at 0 44 on 17-9-2008 phase plot, No of data points 11438, plot No S21206