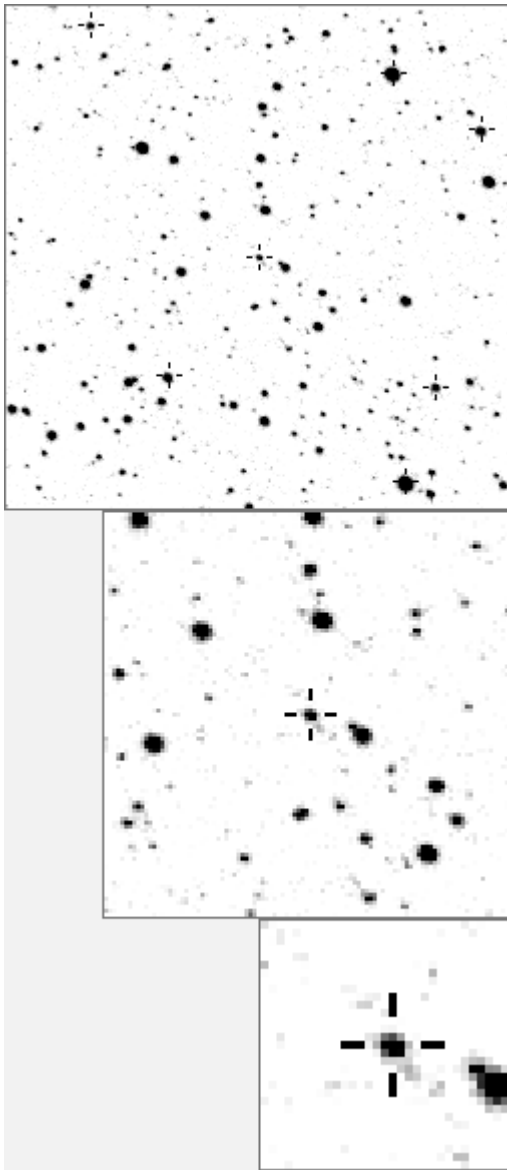


a10709



variable and brighter stars				
.	m	.	.	O 10709 v
.	.	.	.	a 178 v
.	.	.	b	b 229 v
.	.	.	.	j c 709
.	c	.	.	d 813
.	.	.	d	e 2119
n	.	.	i	f 2177
.	.	.	O	g 2232
.	e	.	.	h 2319
.	.	.	.	i 2347
.	.	.	.	j 2358 v
.	k	.	.	l 2540 v
g	.	f	.	l 3782 v
.	.	.	.	m 6455 v
.	.	.	a	n 20181 v
-----				
.	d	.	.	O 10709 v
.	.	.	.	a 2347
.	.	.	h	b 2507
.	.	.	.	c 2670
.	e	.	a	d 3035
l	.	.	.	e 3234
.	.	.	.	f 3660
.	.	.	O	g 6561
.	b	.	f	h 11622
.	.	.	.	i 11649
.	.	.	n	g j 12594
m	.	.	j	i k 15883
.	.	.	k	c l 16972
.	.	.	.	m 19651
.	.	.	.	n 19652

Bitmap sizes are 251, 101 and 31 pixels square, South up. The keys to the right refer to the 1<sup>st</sup> two bitmaps. The numbers in the key are those in my catalogue 'starlistA'. Stars marked with a cross have been found to be variable.

**Data and comments on star a10709**

SWid: a10709 / **USNO id: 1369 443441 / other id:**

Co-ordinates, x,y in image z1051: 3031.4 2792.6

**J2000 sky co-ordinates: 21 12 11.26 +46 58 49.13**

CMC r'magnitude and 2MASS J,H,K magnitudes: 13.498 12.262 11.972 11.895

USNO B1.0 magnitudes, B1,R1,B2,R2,I2: 14.64 12.98 14.96 13.42 13.27

Misc comments :

oct09 eb, 3.277d, flat bottom to mrefs m13.431 13.559, 128mmag

Comparison reference star(s) co-ordinates:

**a10394: 21 11 51.04 +47 1 21.64**

**a09983: 21 11 49.33 +46 59 47.26**

**a11649: 21 12 19.8 +46 59 50.01**

Reminder: **All dates, JD and HJD are from Jan 1<sup>st</sup> 2000**

season 1: dates 1316 to 1553 is 9/8/2003 to 3/4/2004 **(a)**

season 2: dates 1696 to 1838 is 23/8/2004 to 12/01/2005 **(z)**

season 3: dates 2085 to 2177 is 16/9/2005 to 17/12/2005 **(y)**

season 4: dates 2442 to 2755 is 8/9/2006 to 19/7/2007 **(w)**

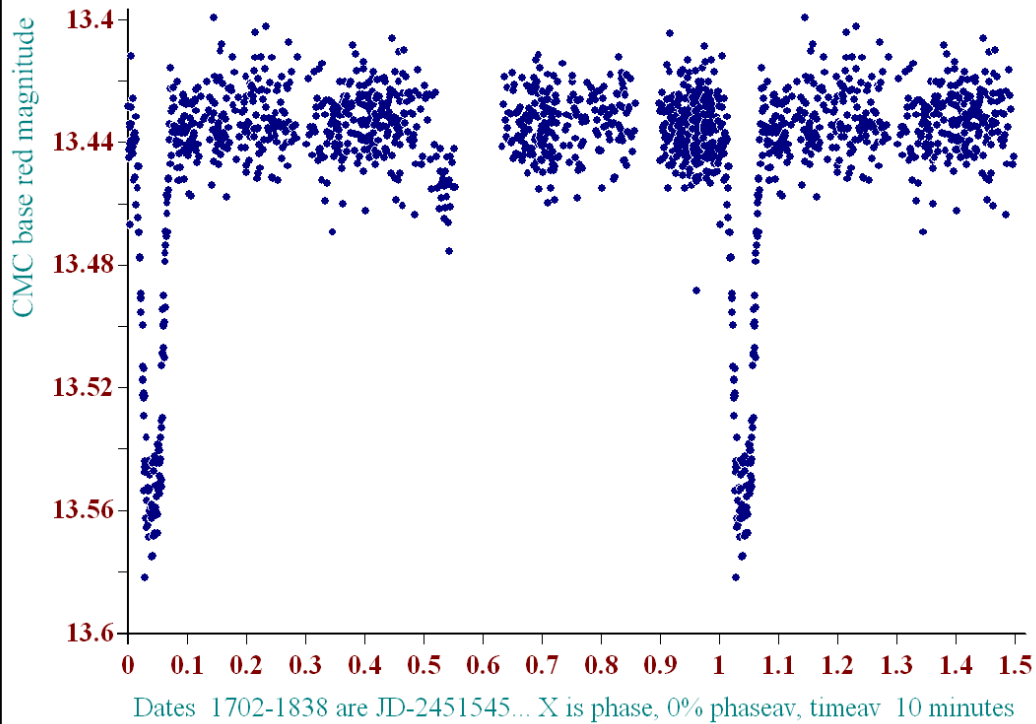
season 5: dates 2772 to 2903 is 4/8/2007 to 13/12/2007 **(v)**

season 6: dates 2930 to 3266 is 9/1/2008 to 10/12/2008 **(u)**

season 7: dates 3403 to 3539 is 26/4/2009 to 10/9/2009 **(t)**

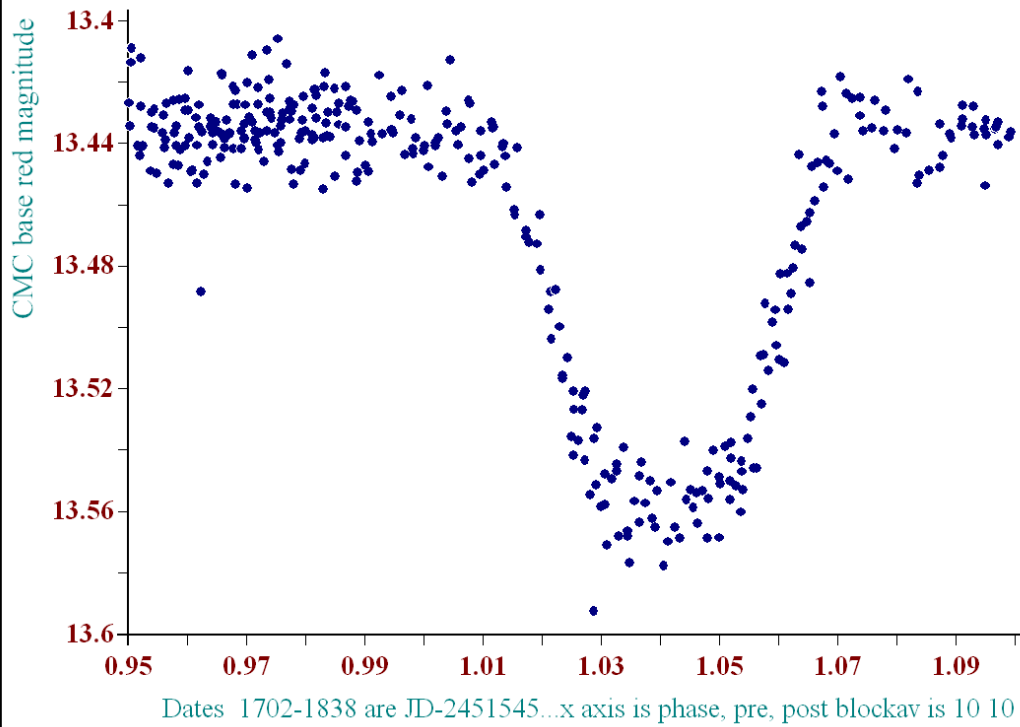
Need to check the secondary, better plots, other years

### Phase Plot, Star a10709 period 3.277d



• created at 12 9 on 5-10-2009, phase plot, Dia was 6, ref a10394 9983 11649c, epoch 1300, plot No S57467

### Phase Plot, Star a10709 period 3.277d



• created at 13 21 on 5-10-2009, phase plot, Dia was 6, ref a10394 9983 11649c, epoch 1300, plot No S57482