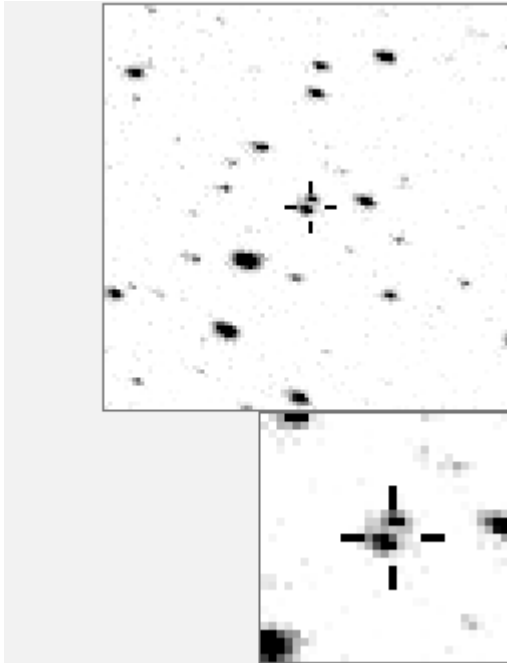


a10829



-----	-----
.	O 10829 v
. d	a 3508
. f j	b 5876
. h	c 9755
.	d 9818
. i	e 12953
. m	f 14012
. k e	g 14974
. O	h 15253
. . . n . a	i 16625
g l	j 17997
.	k 21631
. b	l 25409
.	m 31034
. c	n 33340

Bitmap sizes are 101 and 31 pixels square, South up. The keys to the right refers to the top bitmap. The numbers in the key are those in my catalogue 'starlistA'. Stars marked with a cross have been found to be variable.

Data and comments on star a10829

SWid: a10829 / **USNO id: 0 0 / other id: GSC 3589-4350**

Co-ordinates, x,y in image z1051: 4023.5 2377

J2000 sky co-ordinates: 21 15 58.61 +46 41 37.36

CMC r'magnitude and 2MASS J,H,K magnitudes: 13.542 12.195 11.956 11.848

USNO B1.0 magnitudes, B1,R1,B2,R2,I2: 0 0 0 0 0

Misc comments :

new eb, , period about 1.04760d. To ref 54 magm is 12.78, magr in z is 0.37

Tho edgy, 4024 2378, it has no bumps

Comparison reference star(s) co-ordinates:

a00054: 21 14 36.8 +46 46 46.1

Reminder: **All dates, JD and HJD are from Jan 1st 2000**

season 1: dates 1316 to 1553 is 9/8/2003 to 3/4/2004 (a)

season 2: dates 1696 to 1838 is 23/8/2004 to 12/01/2005 (z)

season 3: dates 2085 to 2177 is 16/9/2005 to 17/12/2005 (y)

season 4: dates 2442 to 2755 is 8/9/2006 to 19/7/2007 (w)

season 5: dates 2772 to 2903 is 4/8/2007 to 13/12/2007 (v)

season 6: dates 2930 to 3266 is 9/1/2008 to 10/12/2008 (u)

season 7: dates 3403 to 3539 is 26/4/2009 to 10/9/2009 (t)

More years needed beyond 2004/5 data

