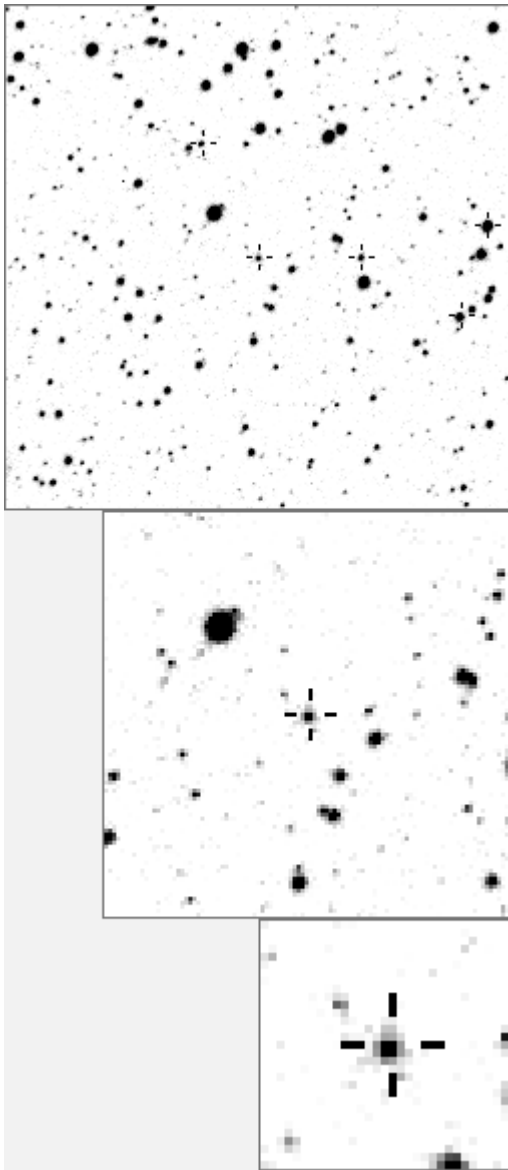


a12431



variable and brighter stars		
. j	O 12431	v
. . e b	a	190
. k	b	525
. i g	c	576
. n	d	586
.	e	618
. a f	f	940 v
. O . m . . . h	g	1214
. d	h	1240
. l .	i	1254
.	j	1410 v
.	k	1662
.	l	2957 v
.	m	10997 v
.	n	11933 v

.	O 12431	v
.	a	190
.	b	5571
. k i	c	5736
. a m	d	6856
. n	e	8899
. c .	f	10268
. O . l	g	10579
. d	h	17296
h g	i	19638
. j	j	21046
. e	k	22756
.	l	26288
. b f	m	28509
.	n	28574

Bitmap sizes are 251, 101 and 31 pixels square, South up. The keys to the right refer to the 1st two bitmaps. The numbers in the key are those in my catalogue 'starlistA'. Stars marked with a cross have been found to be variable.

Data and comments on star a12431

SWid: a12431 / **USNO id: 0 0 / other id:**
 Co-ordinates, x,y in image z1051: 1930.9 3136
J2000 sky co-ordinates: 21 7 54.88 +47 12 37.2
 CMC r'magnitude and 2MASS J,H,K magnitudes: 0 0 0 0
 USNO B1.0 magnitudes, B1,R1,B2,R2,I2: 0 0 0 0 0
 Misc comments :
 oct09 eb, eccentric, phid 0.400, 12.700 12.860, 160mmag, p=2.913

Comparison reference star(s) co-ordinates:

a10579: 21 7 58.83 +47 12 50.31

a06856: 21 8 13.34 +47 14 17.78

a07478: 21 7 56.74 +47 13 12.22

a10803: 21 8 8.26 +47 15 23.28

Colour temp estimate: **6179 deg K**

