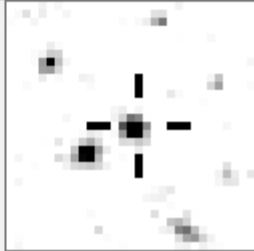
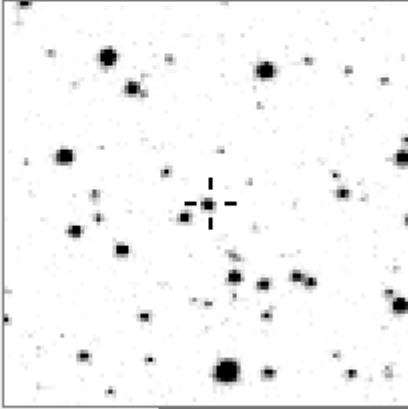
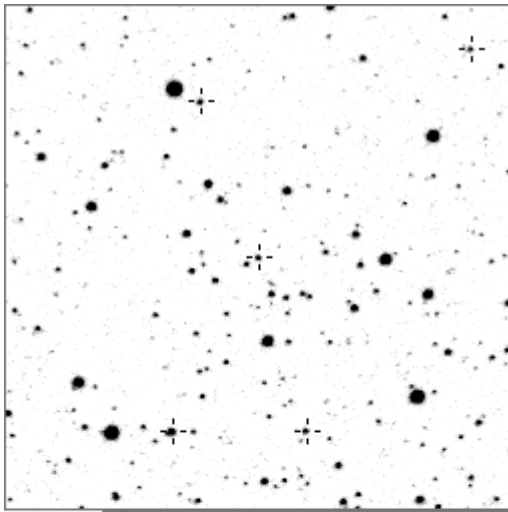


a13325



variable and brighter stars

.	O	13325	v
. n .	a	231	
. l	b	327	
. d	c	369	
.	d	1008	
. i j	e	1101	
.	f	1280	
. O e	g	1348	
. h	h	2039	
. f	i	2375	
.	j	4634	
. g c	k	4912	v
. b k m	l	12760	v
.	m	13302	v
.	n	17400	v

.	O	13325	v
.	a	1280	
. c b	b	4634	
. h	c	5816	
.	d	6226	
. d f	e	6396	
.	f	7800	
. O n	g	10941	
. j m	h	11134	
. i	i	11581	
. g k l	j	13365	
.	k	14993	
.	l	15284	
. a	m	17615	
.	n	17873	

Bitmap sizes are 251, 101 and 31 pixels square, South up. The keys to the right refer to the 1st two bitmaps. The numbers in the key are those in my catalogue 'starlistA'. Stars marked with a cross have been found to be variable.

Data and comments on star a13325

SWid: a13325 / **USNO id: 1357 414261 / other id:**

Co-ordinates, x,y in image z1051: 2043.8 938.9

J2000 sky co-ordinates: 21 8 22.07 +45 45 22.06

CMC r'magnitude and 2MASS J, H, K magnitudes: 13.637 12.541 12.328 12.321

USNO B1.0 magnitudes, B1, R1, B2, R2, I2: 14.68 13.66 15.21 13.55 13.92

Misc comments :

New eb 030708. Period 1.2613 To 231 magm 13.382 magr 0.150

try 231 ref // mins are at 1379.34 1394.48 1703.48 1708.527 1794.28 1823.3 2456.426

2504.353 2794.44 2804.526 2895.327

Best fit period is 1.26121384d with a mean error of 0.0000255

Image co-ordinates in z1051: 2044 939

colour temp estimate: 6125 K

Comparison reference star(s) co-ordinates:

a00231: 21 8 12.62 +45 42 0.49

Using all the data the plot below is quite noisy but could be considerably improved with more work. First measurements give peak to mins of 0.066 and 0.149mag with $\phi^2=0.500\pm 0.005$

Reminder: **All dates, JD and HJD are from Jan 1st 2000**

season 1: dates 1316 to 1553 is 9/8/2003 to 3/4/2004 (a)

season 2: dates 1696 to 1838 is 23/8/2004 to 12/01/2005 (z)

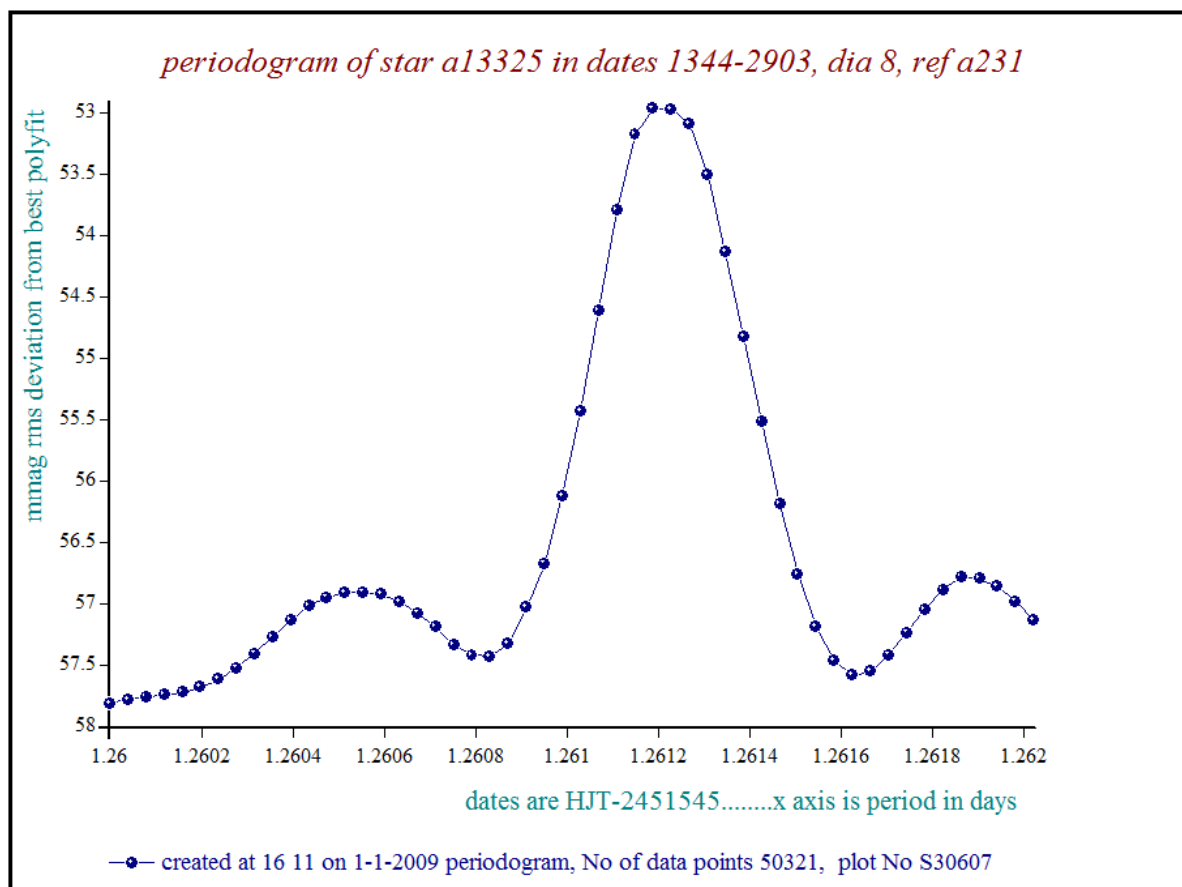
season 3: dates 2085 to 2177 is 16/9/2005 to 17/12/2005 (y)

season 4: dates 2442 to 2755 is 8/9/2006 to 19/7/2007 (w)

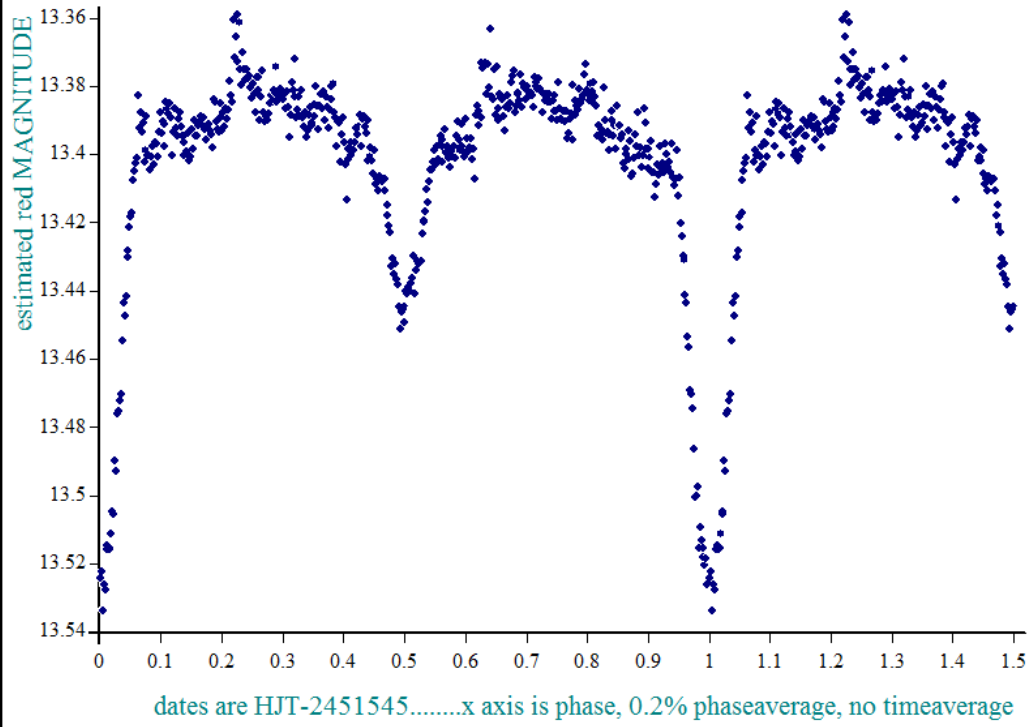
season 5: dates 2772 to 2903 is 4/8/2007 to 13/12/2007 (v)

season 6: dates 2930 to 3266 is 9/1/2008 to 10/12/2008 (u)

season 7: dates 3403 to 3539 is 26/4/2009 to 10/9/2009 (t)



star a13325 in dates 1344-2903, dia 8, ref a231, epoch 1299.894, period 1.261214



♦ created at 16 23 on 1-1-2009 phase plot, No of data points 50321, plot No S30625