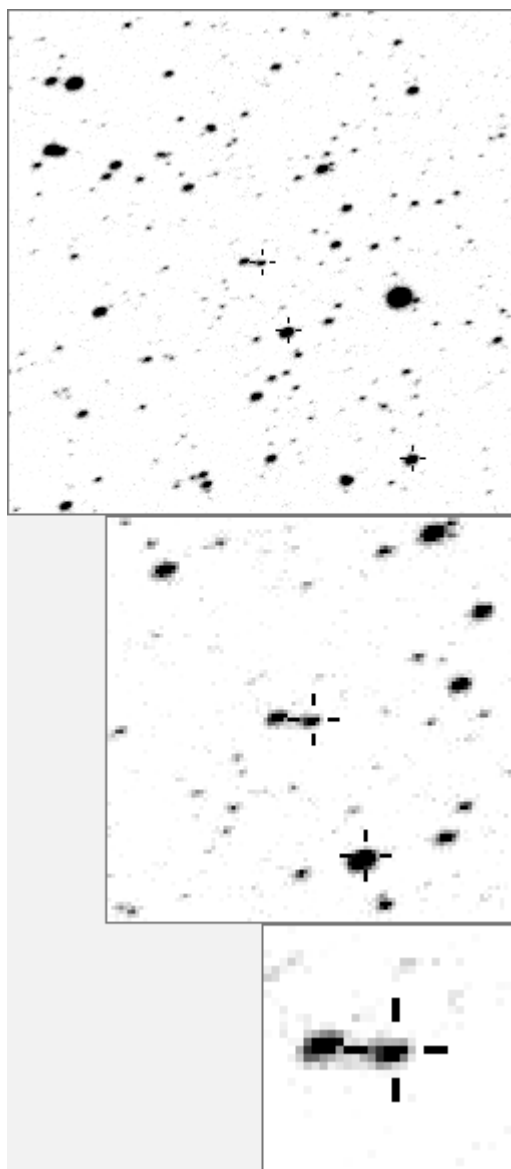


a15178



variable and brighter stars			
.		O	15178 v
.		a	3
. n		b	562
.		c	1125
. i . m		d	1461 v
.		e	2187 v
.		f	2366
.		g	2748
.		h	3100
.		i	3175
.		j	3686
.		k	3856
.		l	4064
.		m	4187
. k		n	4488
-----		-	-
.		b	O 15178 v
.		a	1461 v
.		b	3100
.		c	5756
.		d	6029
.		e	6098
.		f	7691
.		g	9397
.		h	13103
.		i	16614
.		j	18124
.		k	18532
.		l	24009
.		m	24478
.		n	27021

Bitmap sizes are 251, 101 and 31 pixels square, South up. The keys to the right refer to the 1st two bitmaps. The numbers in the key are those in my catalogue 'starlistA'. Stars marked with a cross have been found to be variable.

Data and comments on star a15178

SWid: a15178 / USNO id: 0 0 / other id:

Co-ordinates, x,y in image z1051: 381.1 2345.9

J2000 sky co-ordinates: 21 1 57.42 +46 40 26.59

CMC r'magnitude and 2MASS J, H, K magnitudes: 13.653 11.811 11.493 11.333

USNO B1.0 magnitudes, B1, R1, B2, R2, I2: 0 0 0 0

Misc comments :

A Jul08 rpas star. Noisy osc, period is 2.54343. Magm to 549 is 13.45, magr 0.25.

A tiny bit quieter to 562 possibly or 1970 but worse to 3

r491 .387, r562 .355, r2366 .341 , use 2366. magm 12.55 magr 0.252

Comparison reference star(s) co-ordinates:

a00491: 21 7 41.56 +46 23 7.43

a03100: 21 1 38.82 +46 41 19.58

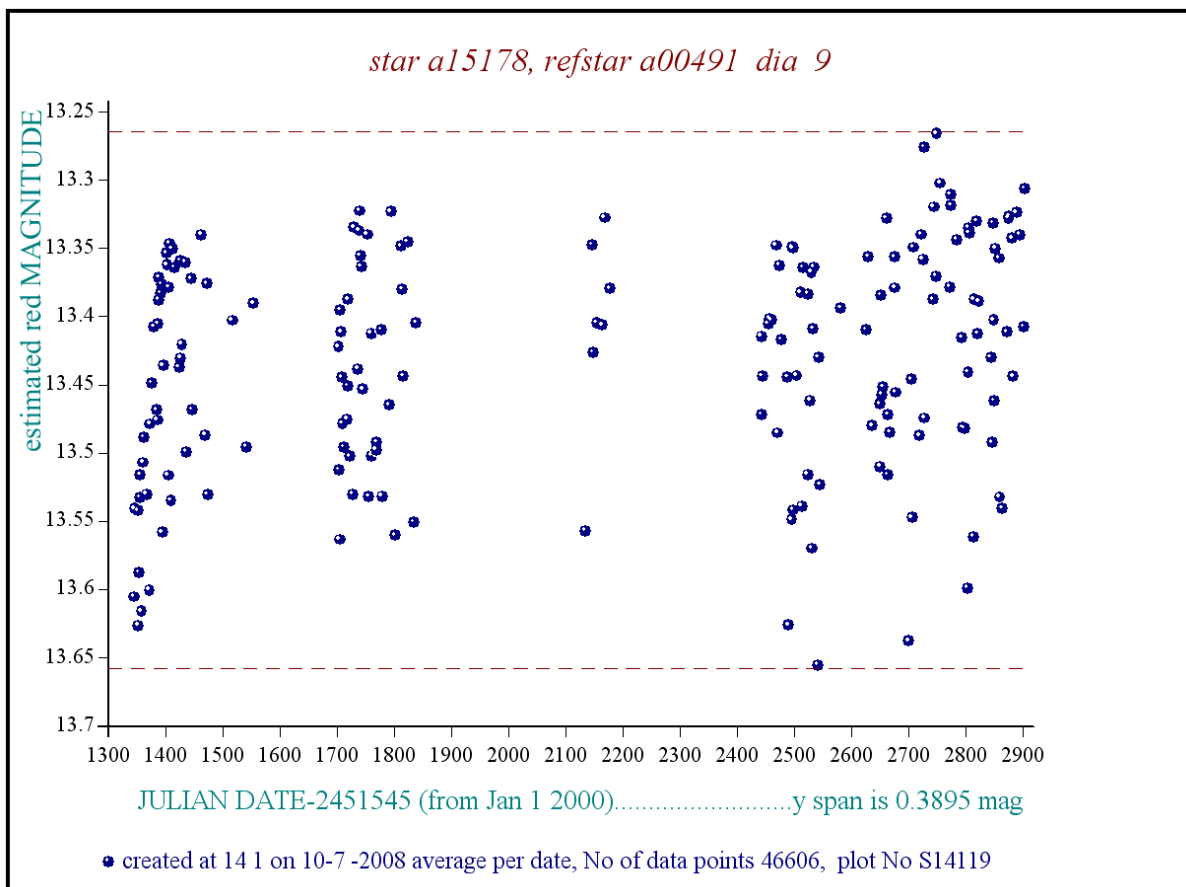
a02366: 21 2 4.56 +46 38 36.41

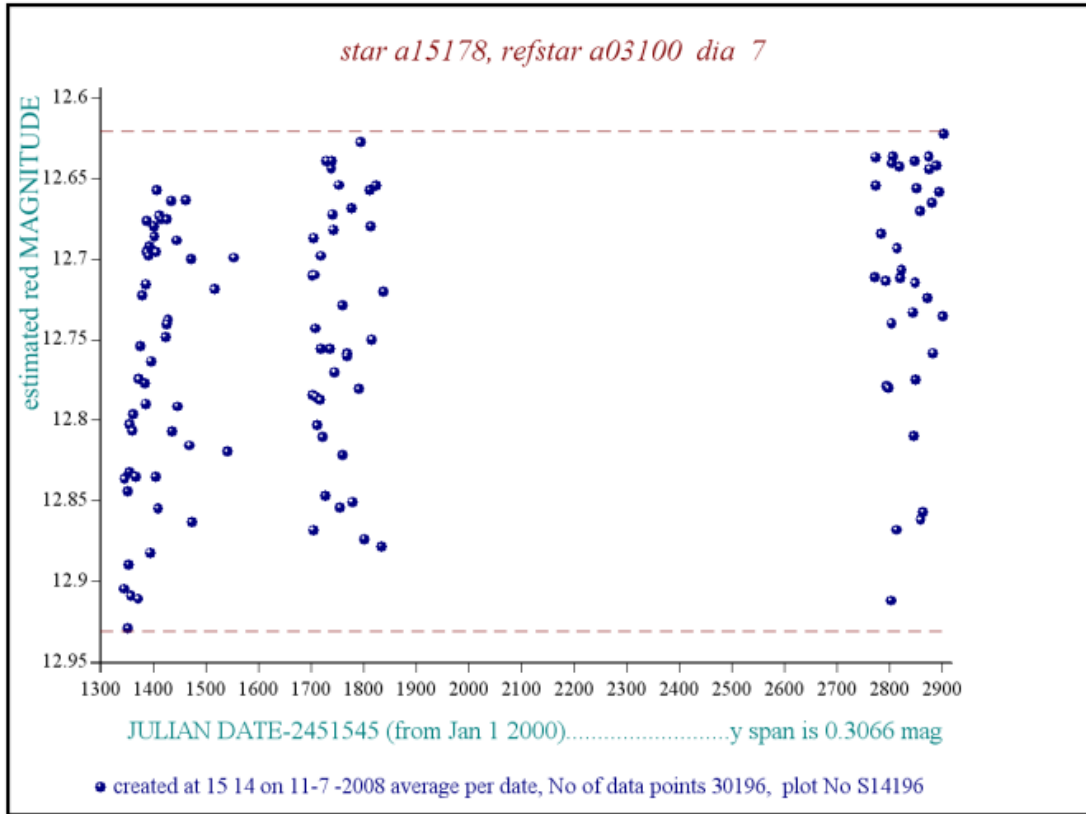
Image quality is not good as this star is near the left hand edge of the image, x,y are typically 382, 2346. The noise will be increased by the star near 15178 (20as away, star 7691)

I don't know why I have all this stuff, I think I thought it was doubtful or something

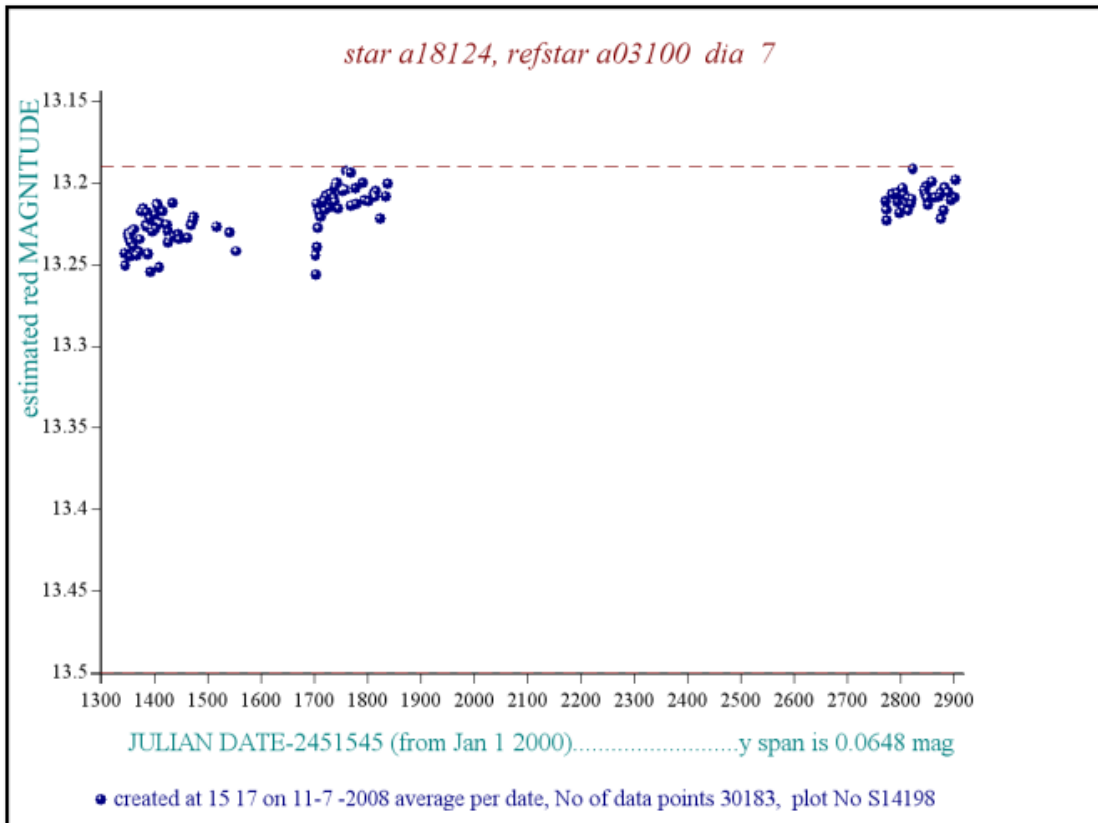
Reminder: **All dates, JD and HJD are from Jan 1st 2000**

- season 1: dates 1316 to 1553 is 9/8/2003 to 3/4/2004 (a)
- season 2: dates 1696 to 1838 is 23/8/2004 to 12/01/2005 (z)
- season 3: dates 2085 to 2177 is 16/9/2005 to 17/12/2005 (y)
- season 4: dates 2442 to 2755 is 8/9/2006 to 19/7/2007 (w)
- season 5: dates 2772 to 2903 is 4/8/2007 to 13/12/2007 (v)
- season 6: dates 2930 to 3266 is 9/1/2008 to 10/12/2008 (u)
- season 7: dates 3403 to 3539 is 26/4/2009 to 10/9/2009 (t)

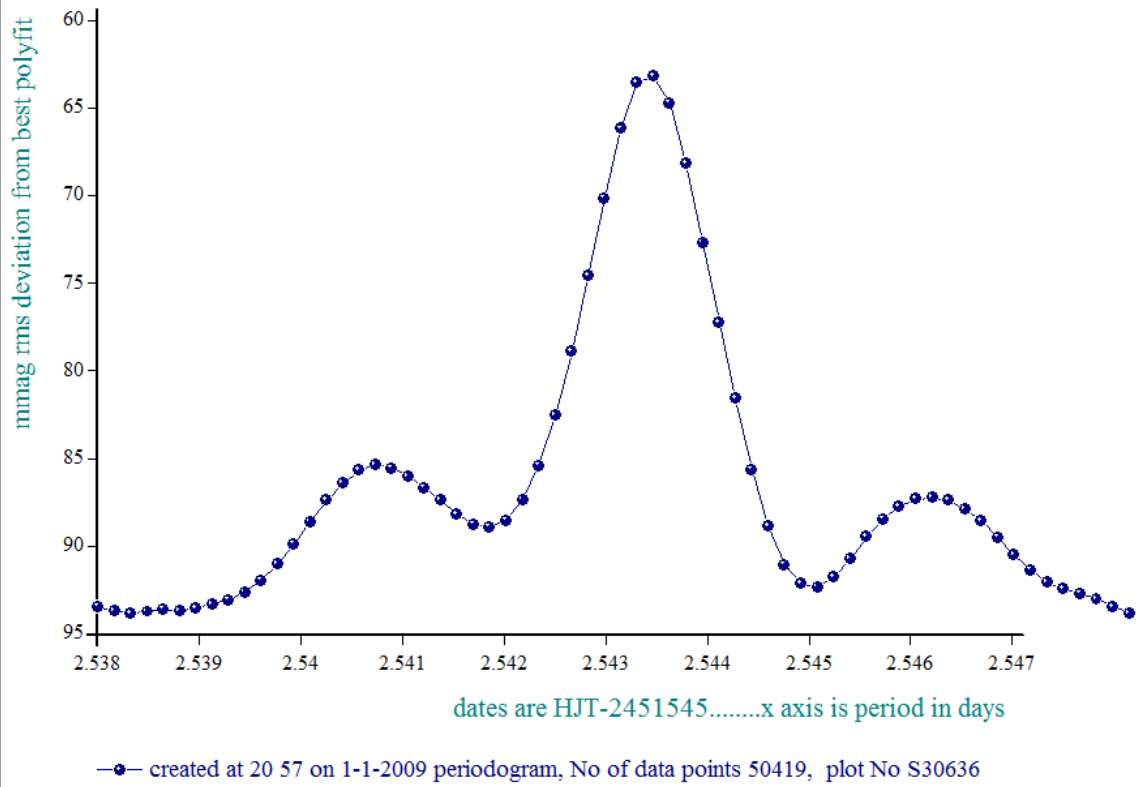




Check star



periodogram of star a15178 in dates 1344-2903, dia 9, ref a2366



star a15178 in dates 1702-1838, dia 9, ref a2366, epoch 1699.4936, period 2.54343

