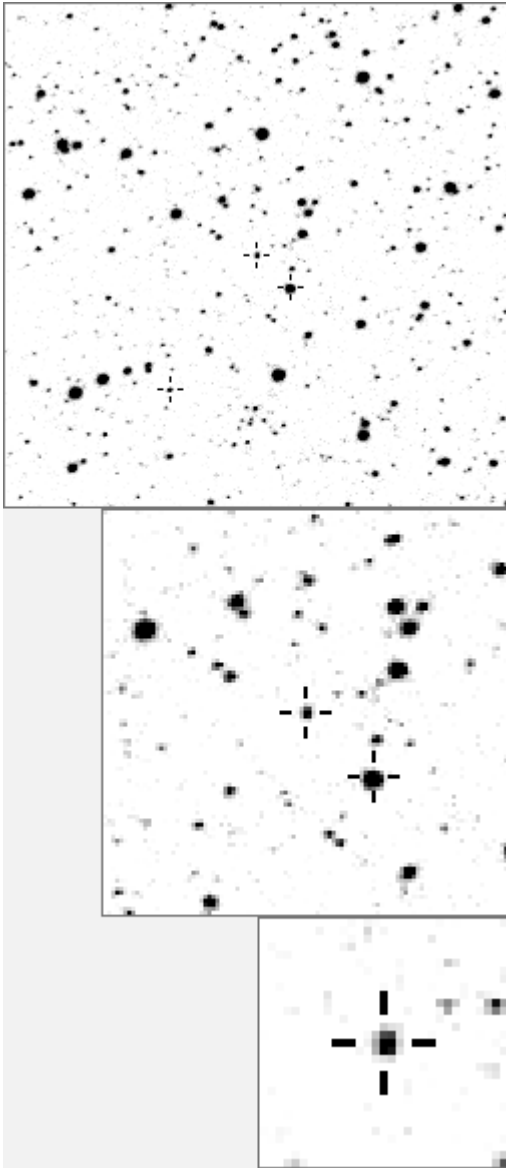


a18494



variables & brighter stars	
.	O 18494
.	a 550
. d . . . m	b 630
.	c 690
. i c	d 724
. k	e 1130
f	e . f 1148
. j g 1158
. O l . . .	h 1227
. n	i 1294
.	j 1454
.	k 1962
. g a	l 2002
. b p	m 2151
.	h n 2268v
. o o 2557
. p 17010v

.	O 18494
. j a 1454
. m	h b 2268v
. f	d c 2940
. a o	e k d 4554
. e 4793
. l	c f 5915
. g 7170
. O	h 8567
.	n i 9691
. j 12263
. p	b k 13119
. l 13660
. m 17031
. n 18840
. g o 19515
. i p 19948

Bitmap sizes are 251, 101 and 31 pixels square, South up. The keys to the right refer to the 1st two bitmaps. The numbers in the key are those in my catalogue 'starlistA'. Stars marked with a cross have been found to be variable.

Data and comments on star a18494

SWid: a18494 / **USNO id: 1366 404782 / other id:**

Co-ordinates, x,y in image z1051: 1415.8 2262.7

J2000 sky co-ordinates: 21 5 56.16 +46 37 50.09

CMC r'magnitude and 2MASS J, H, K magnitudes: 14.215 0 0 016.091 0 0 0

USNO B1.0 magnitudes, B1, R1, B2, R2, I2: 15.07 13.27 15.1 13.26 13.64

Misc comments :

oct09 eb, 14.538 m14.643 mr 0.105mag prob p=4.16090d but work needed T5801 °K

Comparison reference star(s) co-ordinates:

a19133: 21 6 0.16 +46 38 5.77

a18840: 21 6 13.57 +46 35 9.72

a20307: 21 6 1.57 +46 34 32.67

Reminder: **All dates, JD and HJD are from Jan 1st 2000**

season 1: dates 1316 to 1553 is 9/8/2003 to 3/4/2004 (a)

season 2: dates 1696 to 1838 is 23/8/2004 to 12/01/2005 (z)

season 3: dates 2085 to 2177 is 16/9/2005 to 17/12/2005 (y)

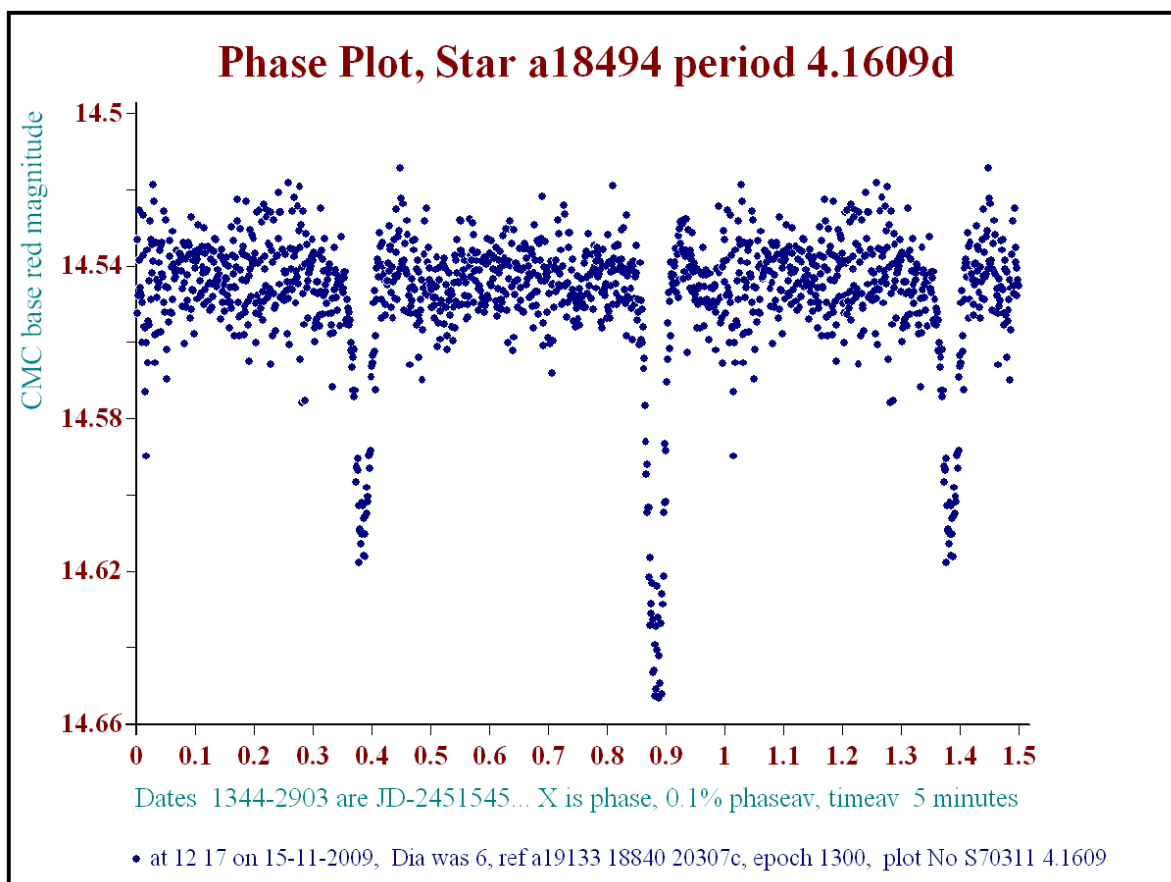
season 4: dates 2442 to 2755 is 8/9/2006 to 19/7/2007 (w)

season 5: dates 2772 to 2903 is 4/8/2007 to 13/12/2007 (v)

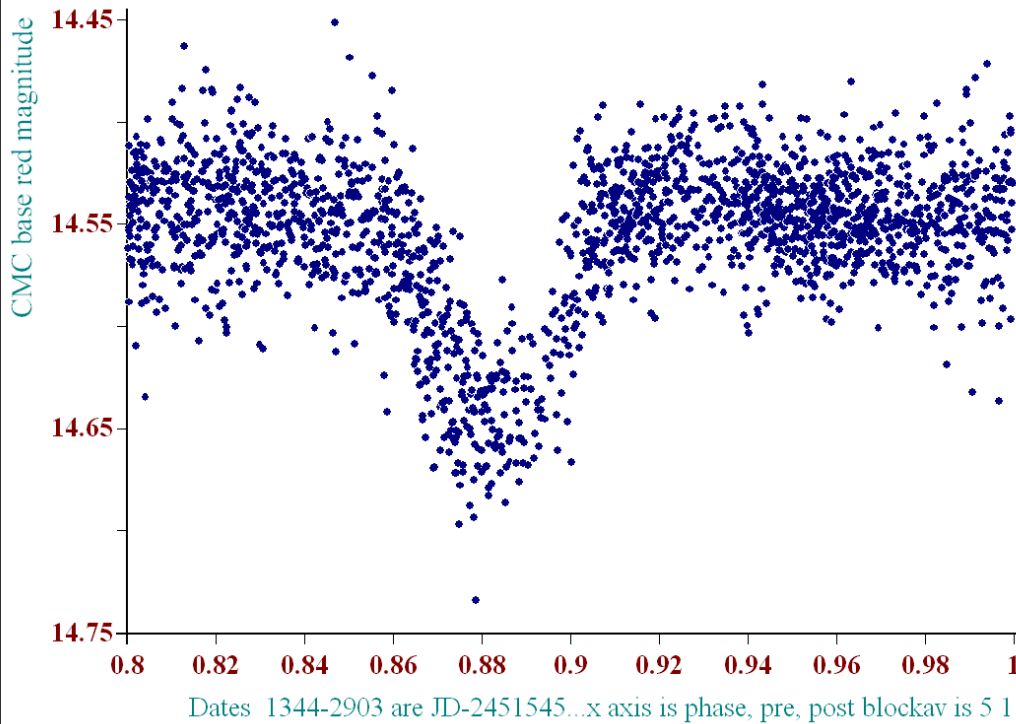
season 6: dates 2930 to 3266 is 9/1/2008 to 10/12/2008 (u)

season 7: dates 3403 to 3539 is 26/4/2009 to 10/9/2009 (t)

More study needed see report a18494w

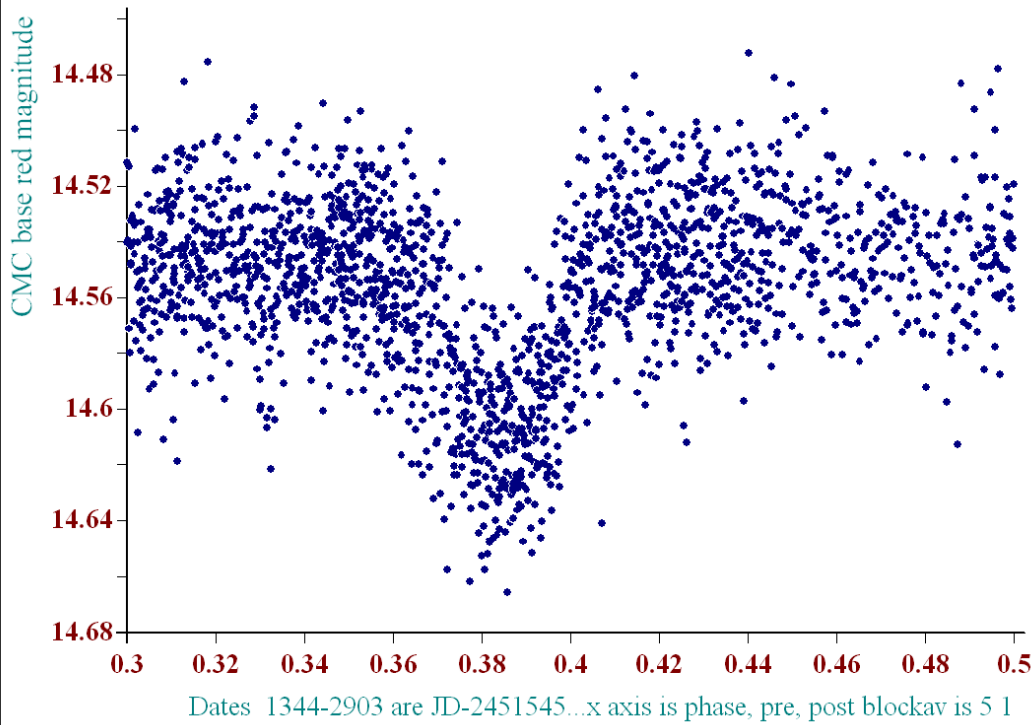


Phase Plot, Star a18494 period 4.1609d



• at 12 20 on 15-11-2009, Dia was 6, ref a19133 18840 20307c, epoch 1300, plot No S70316 4.1609

Phase Plot, Star a18494 period 4.1609d



• at 12 18 on 15-11-2009, Dia was 6, ref a19133 18840 20307c, epoch 1300, plot No S70313 4.1609