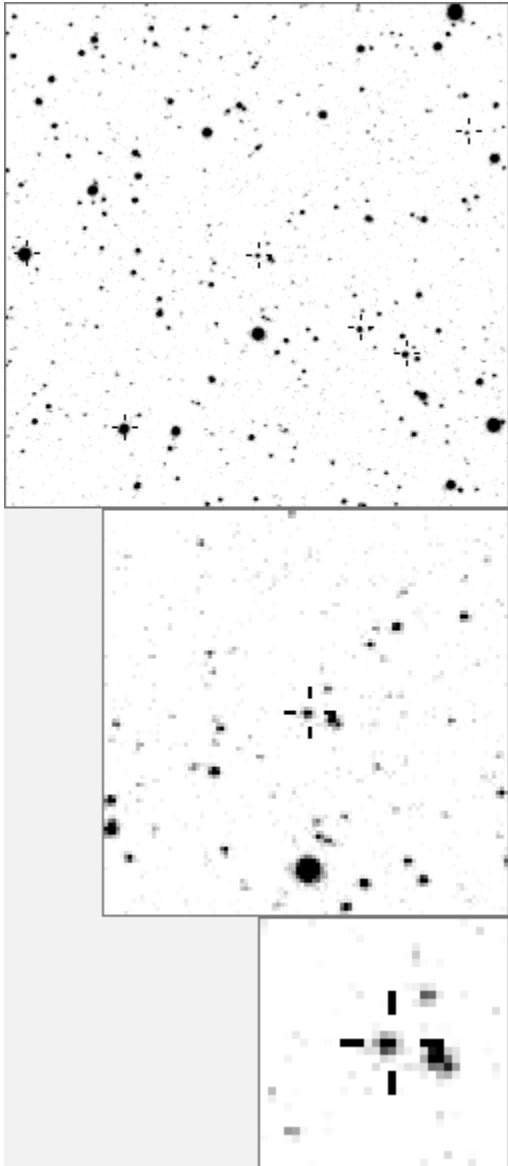


a19617



variable and brighter stars			
.	.	.	a .
m	.	.	.
.	.	.	.
.	.	g	.
.	.	.	.
.	e	.	.
.	.	.	.
c	.	.	O .
.	.	.	.
.	.	d	l .
.	.	.	.
.	.	.	k .
.	.	.	.
.	f	j	.
.	.	.	.
.	.	.	i .
-----			
.	.	.	O 19617 v
.	.	.	a 528
.	.	.	b 8294
.	.	.	c 14333
.	.	.	i j .
.	.	.	d 15898
.	.	.	e 16306
.	.	.	f 16538
.	.	.	O c .
.	.	.	g 17530
.	.	.	n .
.	.	.	h 17733
.	.	.	e .
g	.	.	.
b	.	.	.
k	.	.	.
.	l	.	m .
.	.	.	.
.	.	a	d h .
.	.	.	f .
.	.	.	.
.	.	.	n 26619

**Data and comments on star a19617**

SWid: a19617 / **USNO id: 1370 463655 / other id:**

Co-ordinates, x,y in image z1051: 2371.8 2883.6

**J2000 sky co-ordinates: 21 9 37.86 +47 2 37.75**

CMC r'magnitude and 2MASS J, H, K magnitudes: 14.302 12.849 12.552 12.448

USNO B1.0 magnitudes, B1, R1, B2, R2, I2: 15.6 13.93 15.84 14.45 14.51

Misc comments :

Nice new eb, Aug 08, p=2.358, report

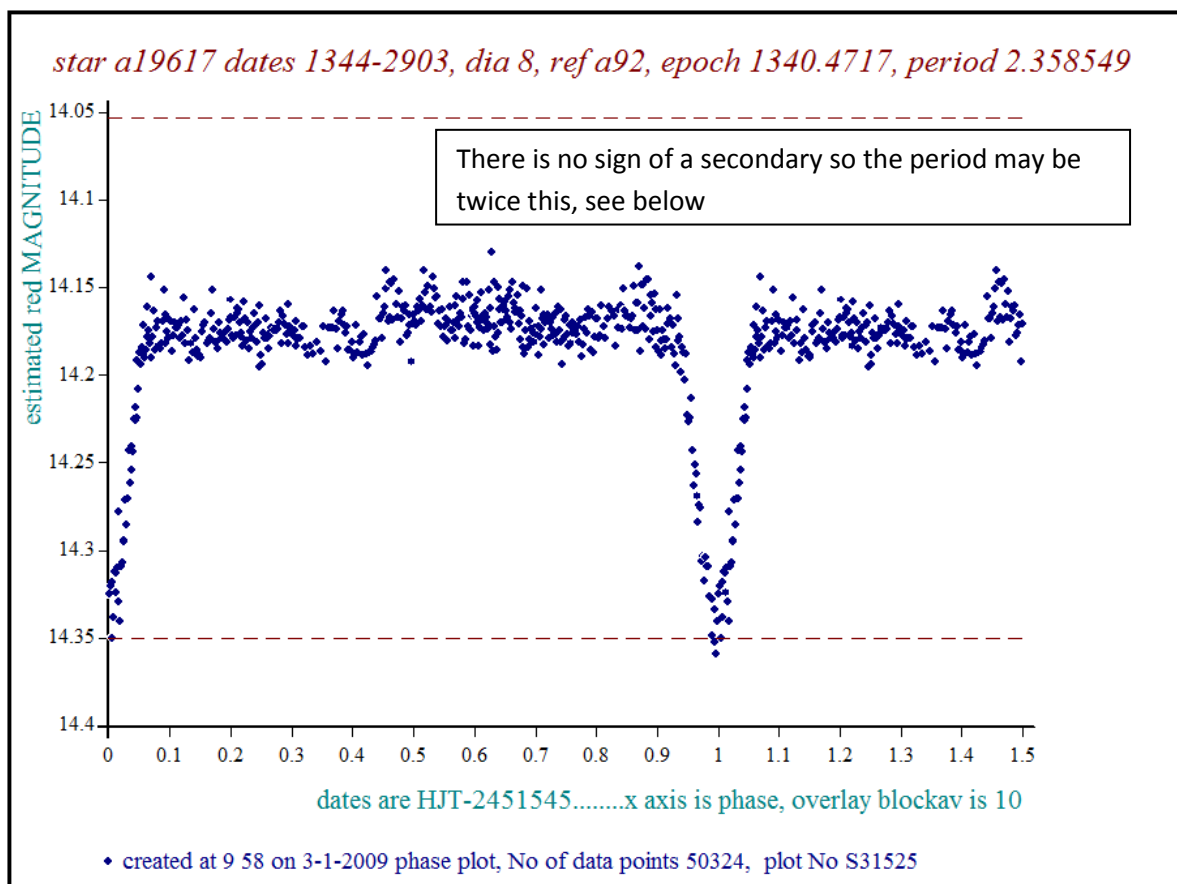
No, p=4.717098, to 92 magm 14.17, r 0.17

Comparison reference star(s) co-ordinates:

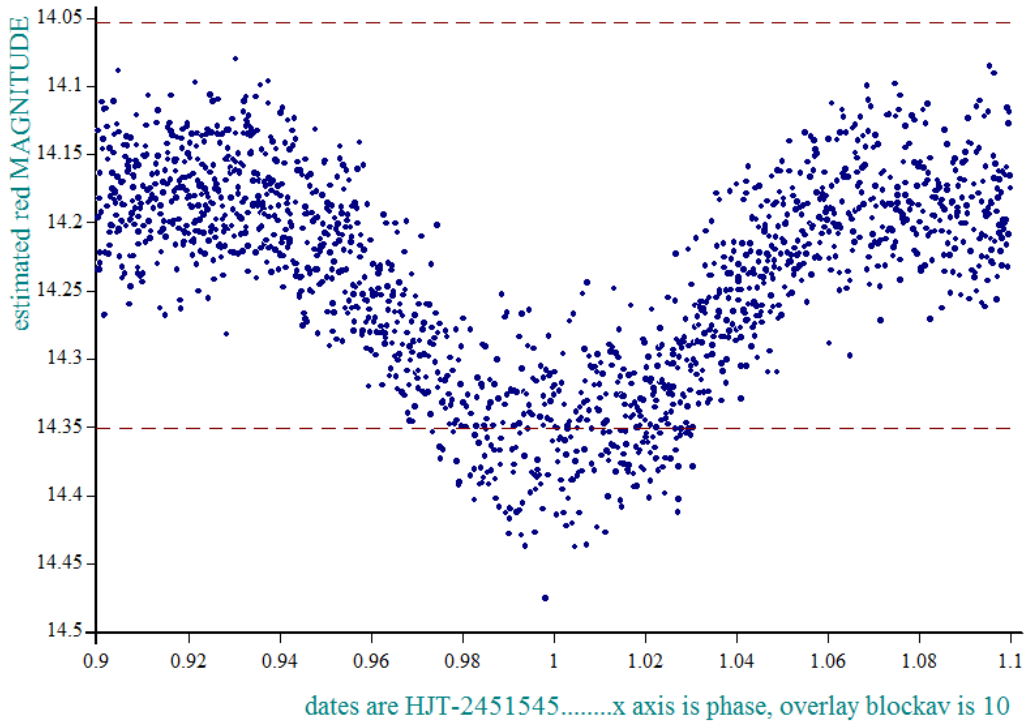
**a00092: 21 10 31.92 +47 12 27.54**

Reminder: **All dates, JD and HJD are from Jan 1<sup>st</sup> 2000**

- season 1: dates 1316 to 1553 is 9/8/2003 to 3/4/2004 **(a)**
- season 2: dates 1696 to 1838 is 23/8/2004 to 12/01/2005 **(z)**
- season 3: dates 2085 to 2177 is 16/9/2005 to 17/12/2005 **(y)**
- season 4: dates 2442 to 2755 is 8/9/2006 to 19/7/2007 **(w)**
- season 5: dates 2772 to 2903 is 4/8/2007 to 13/12/2007 **(v)**
- season 6: dates 2930 to 3266 is 9/1/2008 to 10/12/2008 **(u)**
- season 7: dates 3403 to 3539 is 26/4/2009 to 10/9/2009 **(t)**

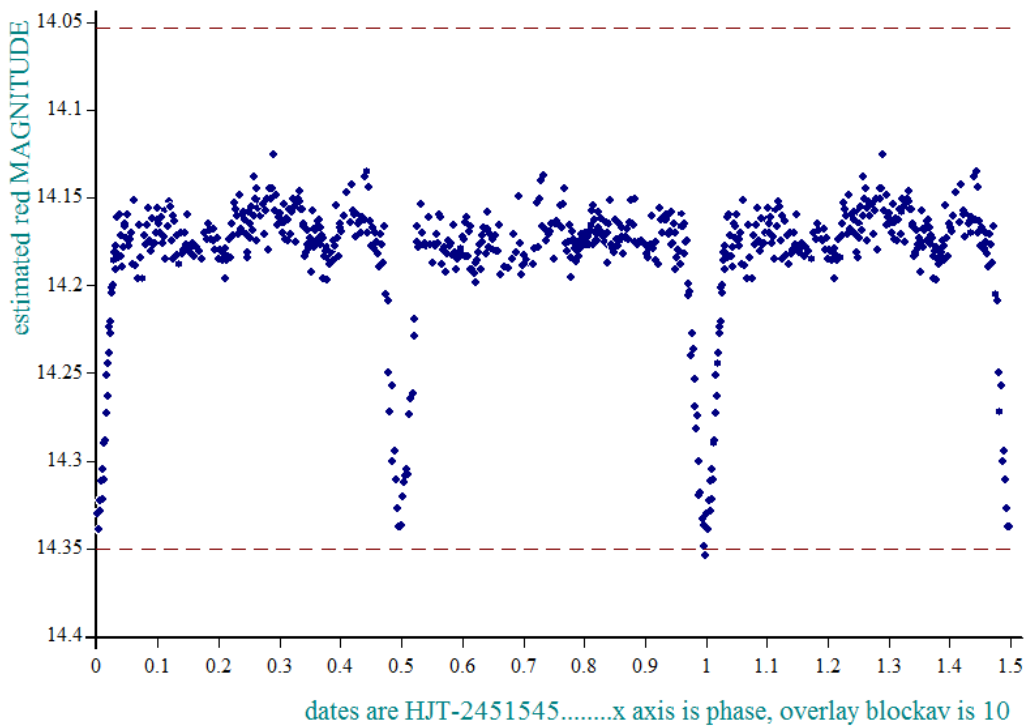


*star a19617 dates 1702-1838, dia 8, ref a92, epoch 1340.4717, period 2.358549*



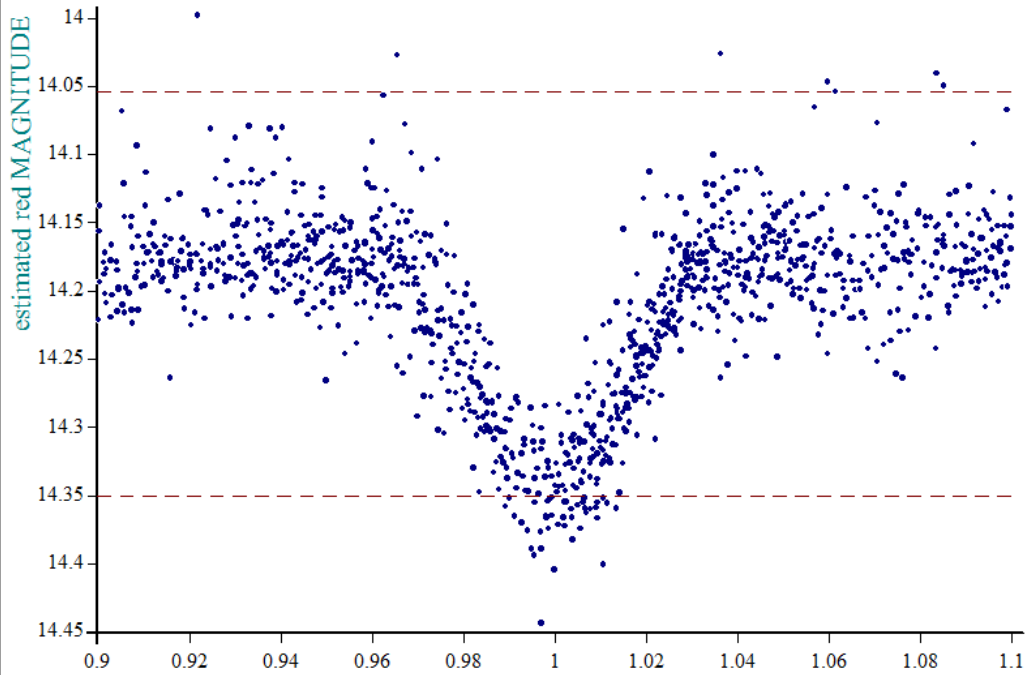
• created at 9 56 on 3-1-2009 phase plot, No of data points 11685, plot No S31522

*star a19617 dates 1344-2903, dia 8, ref a92, epoch 1340.4717, period 4.717098*



• created at 10 1 on 3-1-2009 phase plot, No of data points 50324, plot No S31529

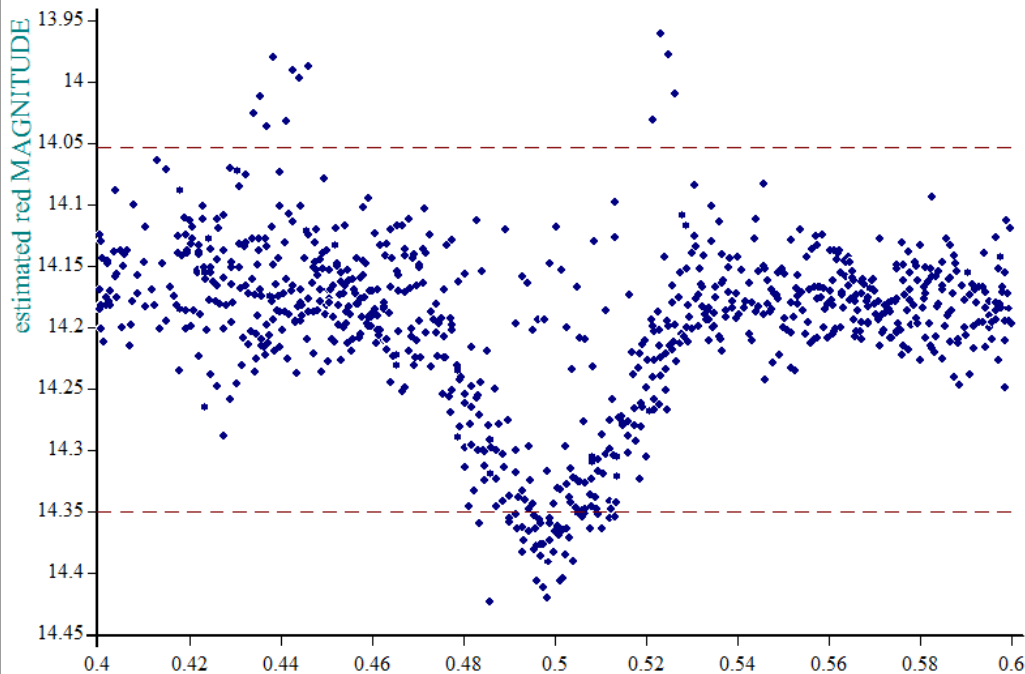
*star a19617 dates 1344-2903, dia 8, ref a92, epoch 1340.4717, period 4.717098*



dates are HJT-2451545.....x axis is phase, overlay blockav is 10

• created at 10 5 on 3-1-2009 phase plot, No of data points 50324, plot No S31538

*star a19617 dates 1344-2903, dia 8, ref a92, epoch 1340.4717, period 4.717098*



dates are HJT-2451545.....x axis is phase, overlay blockav is 10

• created at 10 4 on 3-1-2009 phase plot, No of data points 50324, plot No S31536

phi 2 is 0.500 +/- .002