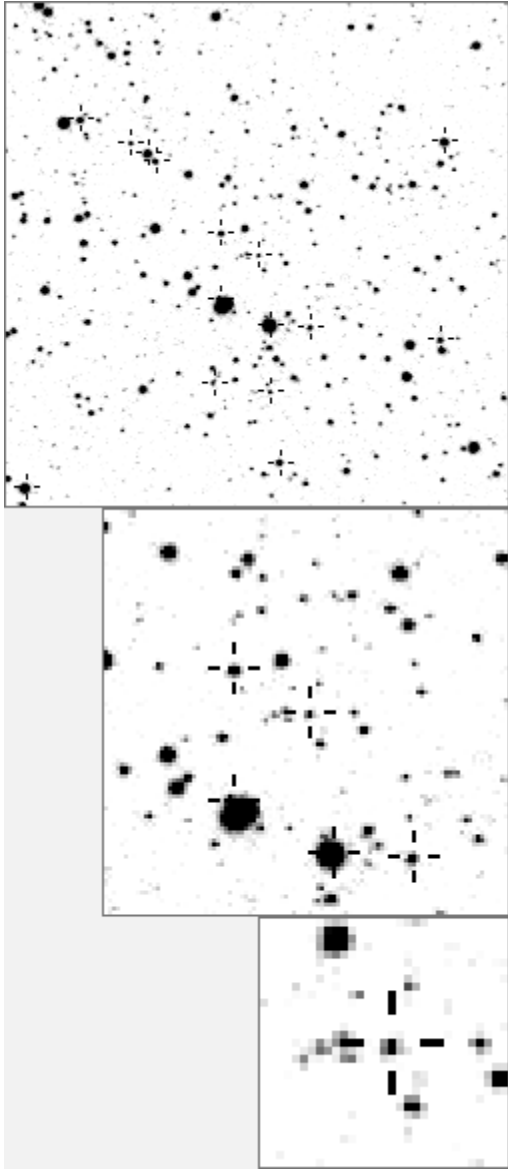


a21182



variable and brighter stars	
.	O 21182 v
.	a 198 v
.	b 1195 v
. . f	c 2604 v
. . . m j c .	d 3286 v
.	e 5875 v
. h	f 6358 v
. O	g 7178 v
. e	h 9083 v
. a . k	i 9919 v
. i . .	j 10311 v
. n l	k 12251 v
.	l 14484 v
.	m 19576 v
. g	n 20467 v
b	- -

.	O 21182 v
. . e . . h k	a 198 v
. d	b 3207
.	c 3825
. j	d 4457
. i . f	e 4535
.	f 5270
. O	g 5875 v
.	h 9017
m . b	i 9083 v
. . c . g	j 9605
.	k 10186
. a . n	l 11326
.	m 12022
. l	n 12251 v

Bitmap sizes are 251, 101 and 31 pixels square, South up. The keys to the right refer to the 1st two bitmaps. The numbers in the key are those in my catalogue 'starlistA'. Stars marked with a cross have been found to be variable.

Data and comments on star a21182

SWid: a21182 / USNO id: 1368 430327 / other id: 1350-13589039

Co-ordinates, x,y in image z1051: 2638.2 2568

J2000 sky co-ordinates: 21 10 39.61 +46 50 3.36

CMC r'magnitude and 2MASS J, H, K magnitudes: 14.586 13.368 13.191 13.078

USNO B1.0 magnitudes, B1, R1, B2, R2, I2: 15.31 13.92 15.7 14.29 14.46

Misc comments :

Eb of period 1.178848 (R) to 60 magm is 14.21, magr 0.22. sec to pri min separation is 0.5+/-0.002

It may be slightly quieter to the closer ref 545

Comparison reference star(s) co-ordinates:

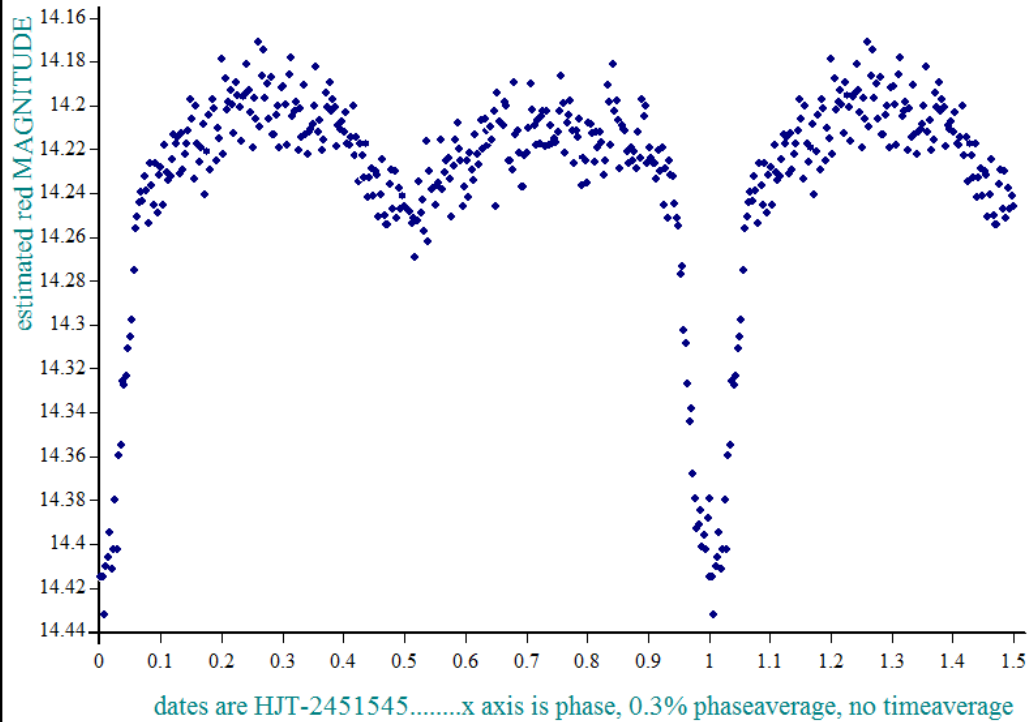
a00060: 21 12 6.61 +46 49 29.38

Star 21182 is in a very crowded field with 14 other variables in the 251 bitmap

Reminder: All dates, JD and HJD are from Jan 1st 2000

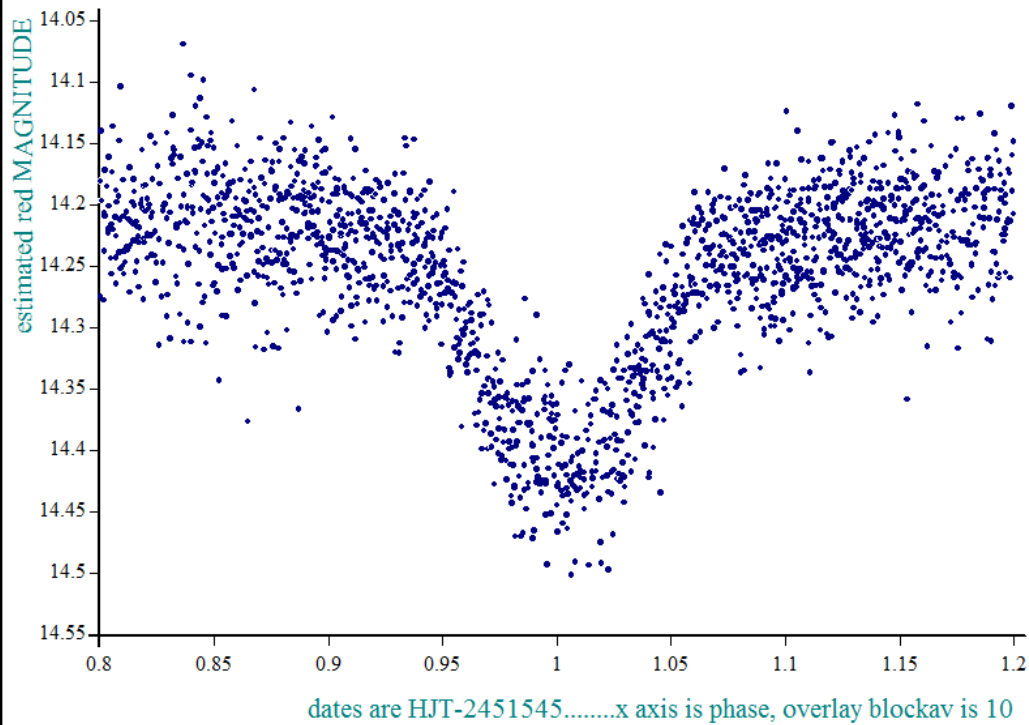
season 1: dates 1316 to 1553 is 9/8/2003 to 3/4/2004	(a)
season 2: dates 1696 to 1838 is 23/8/2004 to 12/01/2005	(z)
season 3: dates 2085 to 2177 is 16/9/2005 to 17/12/2005	(y)
season 4: dates 2442 to 2755 is 8/9/2006 to 19/7/2007	(w)
season 5: dates 2772 to 2903 is 4/8/2007 to 13/12/2007	(v)
season 6: dates 2930 to 3266 is 9/1/2008 to 10/12/2008	(u)
season 7: dates 3403 to 3539 is 26/4/2009 to 10/9/2009	(t)

star a21182 in dates 1702-1838, dia 7, ref a60, epoch 1339.858538, period 1.178848



• created at 13 1 on 4-1-2009 phase plot, No of data points 11745, plot No S31885

star a21182 dates 1702-1838, dia 7, ref a60, epoch 1339.8585, period 1.178848



• created at 13 3 on 4-1-2009 phase plot, No of data points 11745, plot No S31890