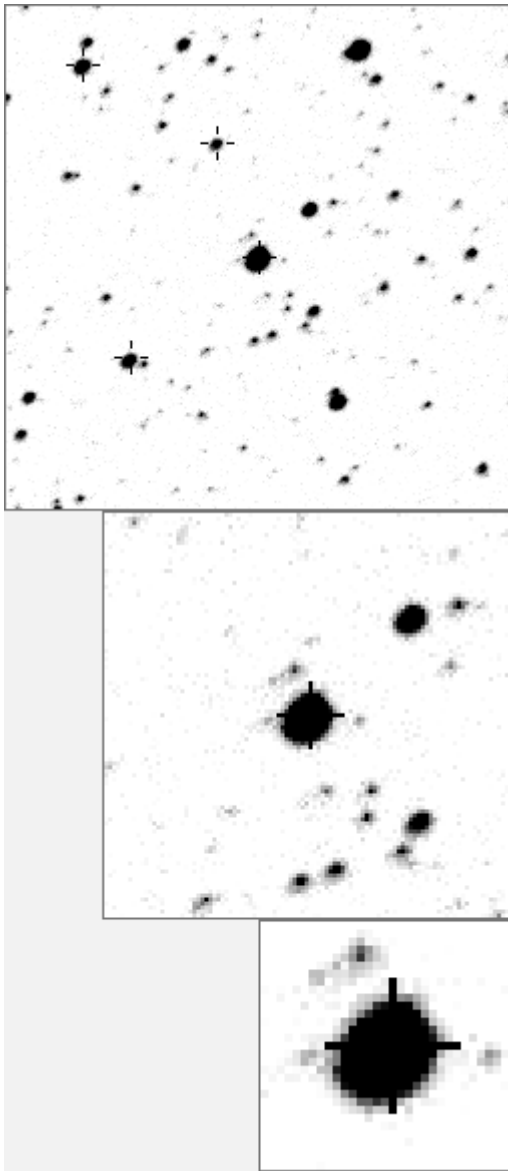


a00026



variables& brighter stars			
.	.	O	26 v
.	k	a	125
.	.	b	843
.	.	c	1075 v
.	h	d	1478
.	.	e	1591 v
.	.	d	f
.	O	j	g
.	.	.	h
.	.	i	i
.	e	.	j
g	.	m	k
l	.	.	l
.	.	.	m
.	.	.	n
-----			
.	n	O	26 v
.	.	a	1478
.	.	b	3922
.	.	a	f
.	.	c	9190
.	.	d	10670
.	i	m	e
.	.	.	f
.	O	l	g
.	.	.	h
.	.	.	i
.	.	.	j
.	k	h	.
.	.	g	b
.	.	e	.
.	.	.	l
.	d	c	.
.	.	.	m
.	j	.	.
.	.	.	n

Bitmap sizes are 251, 101 and 31 pixels square, South up. The keys to the right refer to the 1<sup>st</sup> two bitmaps. The numbers in the key are those in my catalogue 'starlistA'

Data and comments on star a00026

SWid: a00026 / USNO id: 3589 64201 / other id: BD+44°3742

Co-ordinates, x,y in image z1051: 3445.2 275.6

J2000 sky co-ordinates: 21 13 37.69 +45 18 56.18

CMC r'magnitude and 2MASS J,H,K magnitudes: 0 0 0 0

USNO B1.0 magnitudes, B1,R1,B2,R2,I2: 11.28 8.61 10.23 8.54 7.72

Misc comments :

1 irr osc, good overlay peak at 31.4d in 'v', equally good at 42.3d in 'z'  
 weak in 'a' and 'w'. Light curve deviates in 'w' to ref 112 and to nearer 125  
 v to z period ratio is 1.34, very suggestive of a 4/3 ratio  
 amplitude 0.2 to 0.3 mag. magm is 8.2 to 112

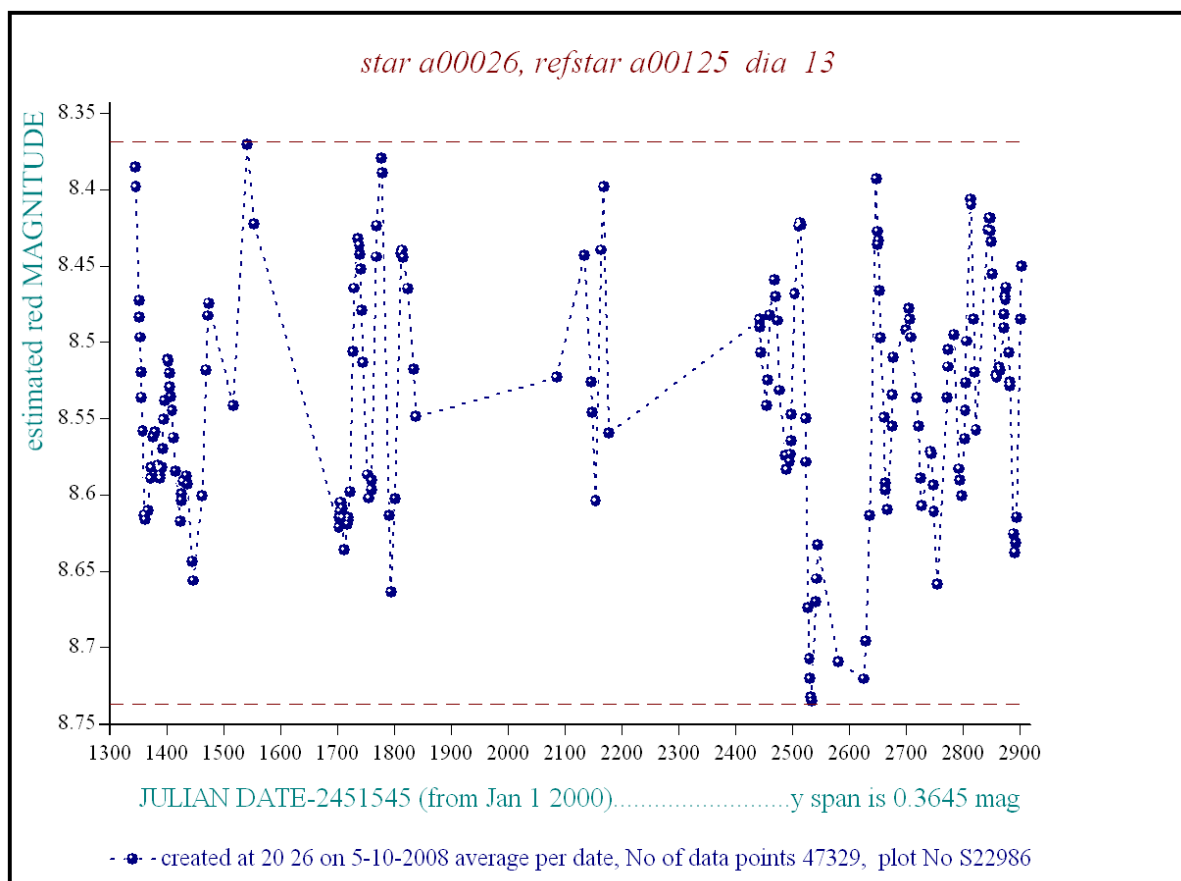
Comparison reference star(s) co-ordinates:

**a125: 21 13 3.8 45 28 19.59**

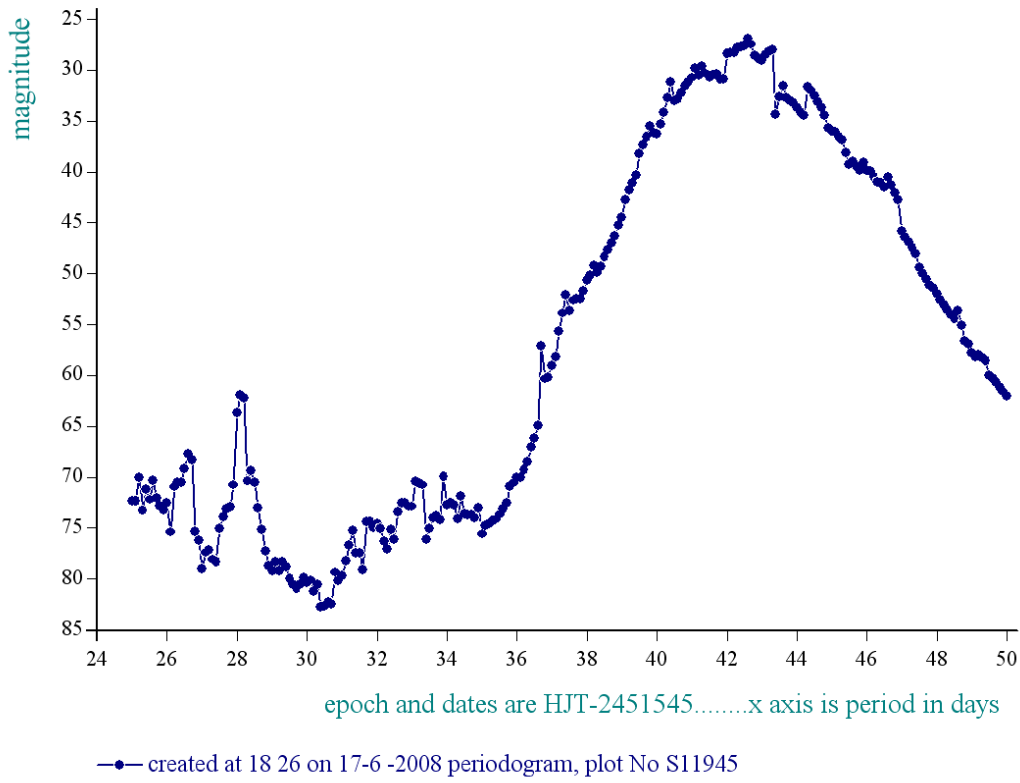
**a112: 21 13 48.45 45 14 49.35**

Reminder: **All dates, JD and HJD are from Jan 1<sup>st</sup> 2000**

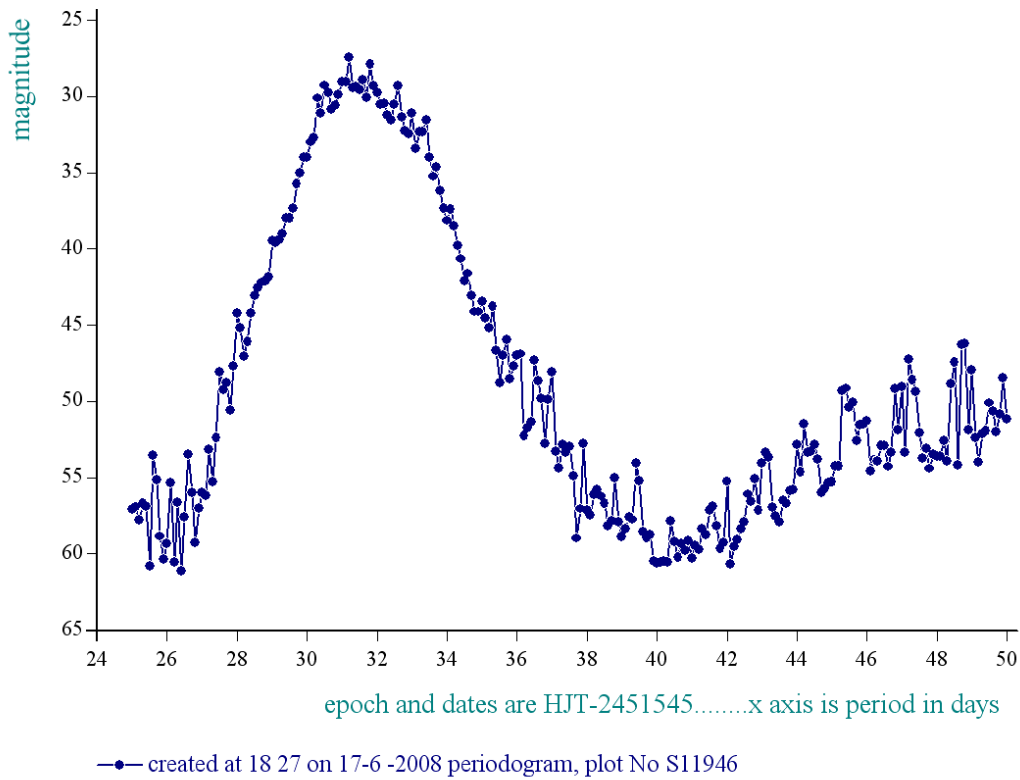
- season 1: dates 1316 to 1553 is 9/8/2003 to 3/4/2004      **(a)**
- season 2: dates 1696 to 1838 is 23/8/2004 to 12/01/2005      **(z)**
- season 3: dates 2085 to 2177 is 16/9/2005 to 17/12/2005      **(y)**
- season 4: dates 2442 to 2755 is 8/9/2006 to 19/7/2007      **(w)**
- season 5: dates 2772 to 2903 is 4/8/2007 to 13/12/2007      **(v)**
- season 6: dates 2930 to 3266 is 9/1/2008 to 10/12/2008      **(u)**
- season 7: dates 3403 to 3539 is 26/4/2009 to 10/9/2009      **(t)**

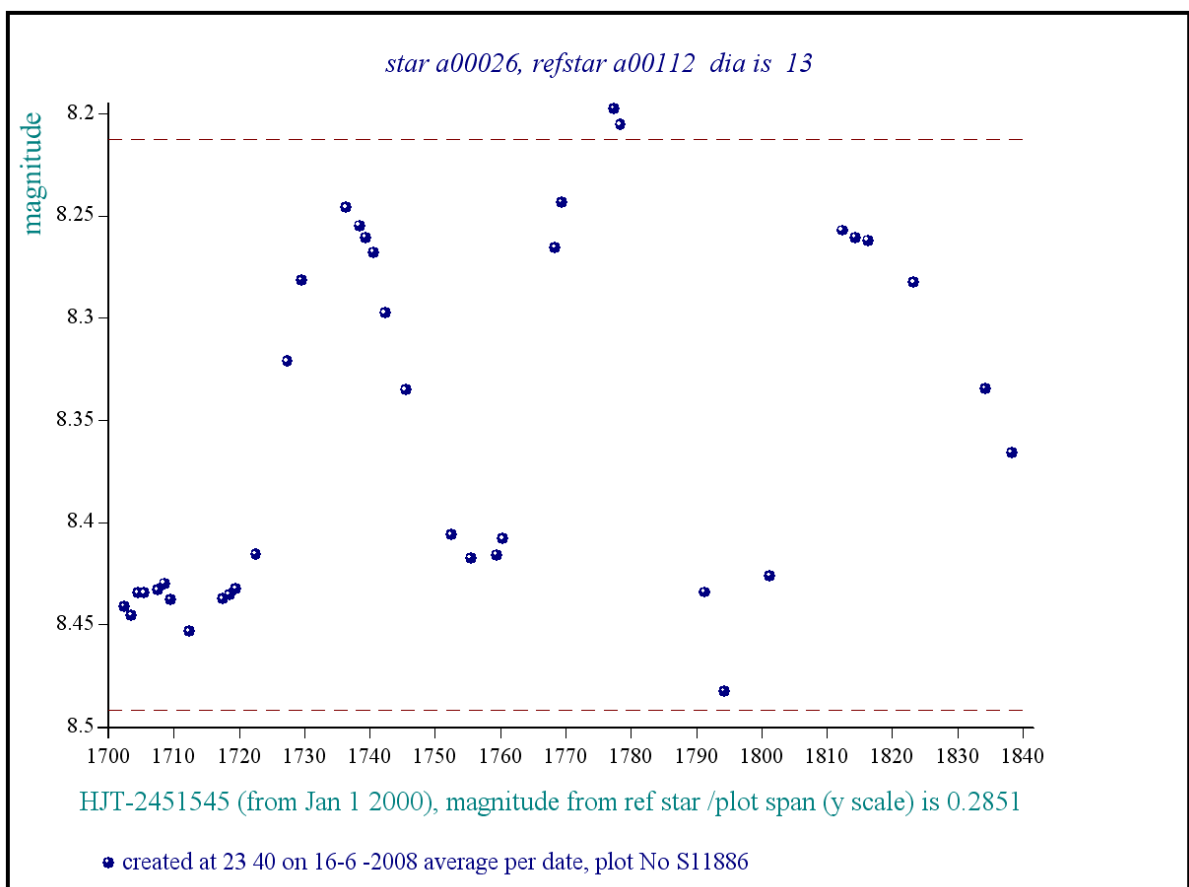
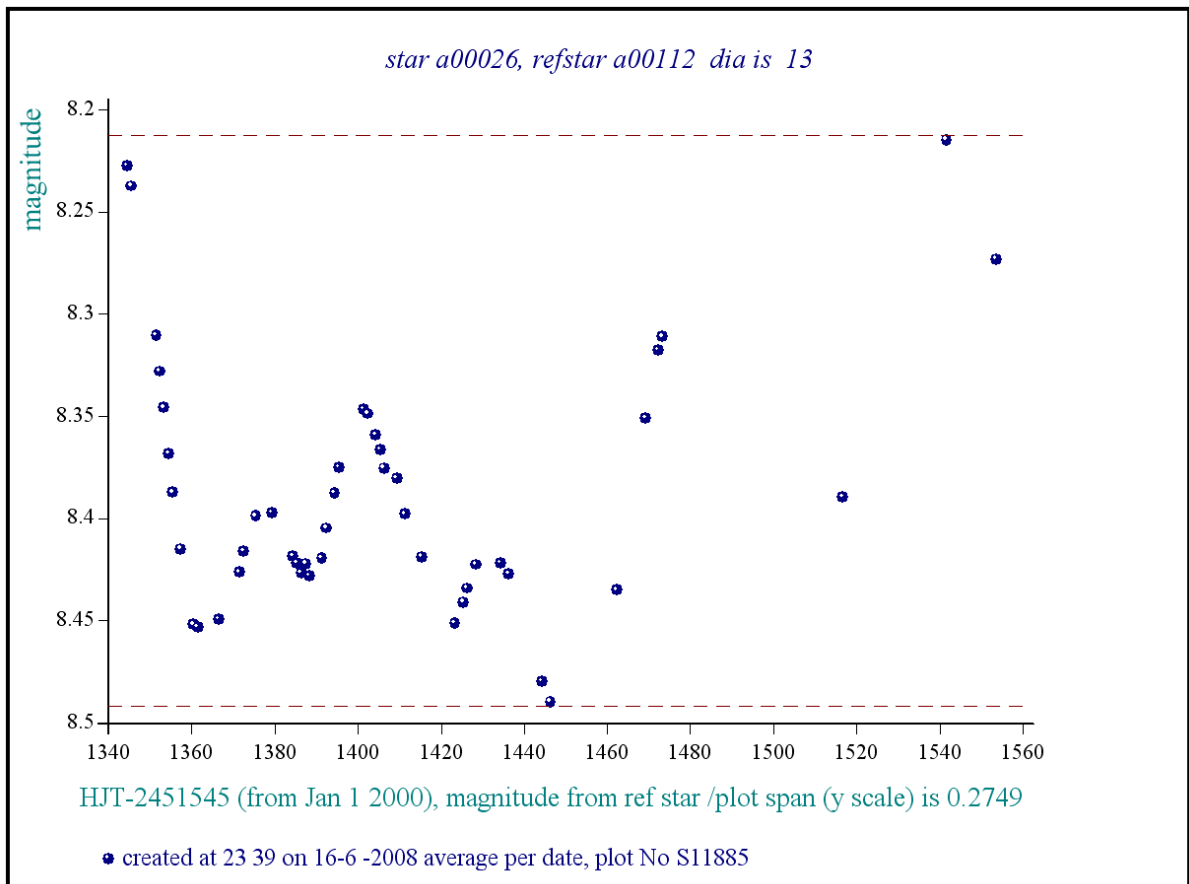


*periodogram of star a26 in dates 1702-1838, dia 13, ref a112, epoch is 1300*

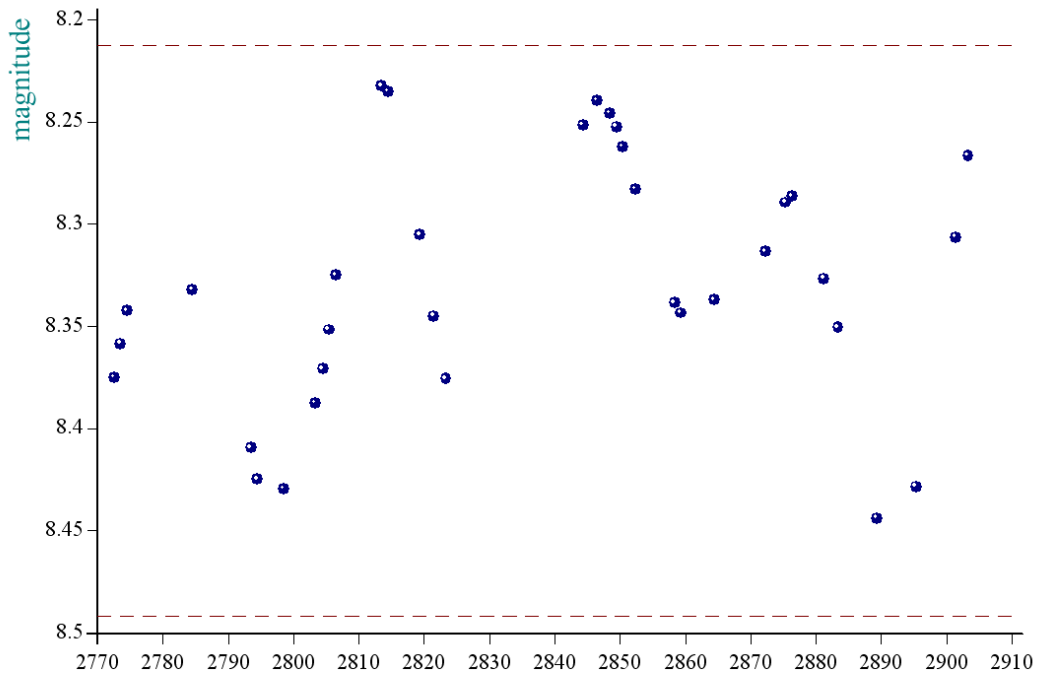


*periodogram of star a26 in dates 2772-2903, dia 13, ref a112, epoch is 1300*





star a00026, refstar a00112 dia is 13



HJT-2451545 (from Jan 1 2000), magnitude from ref star /plot span (y scale) is 0.2114

• created at 23 40 on 16-6 -2008 average per date, plot No S11887