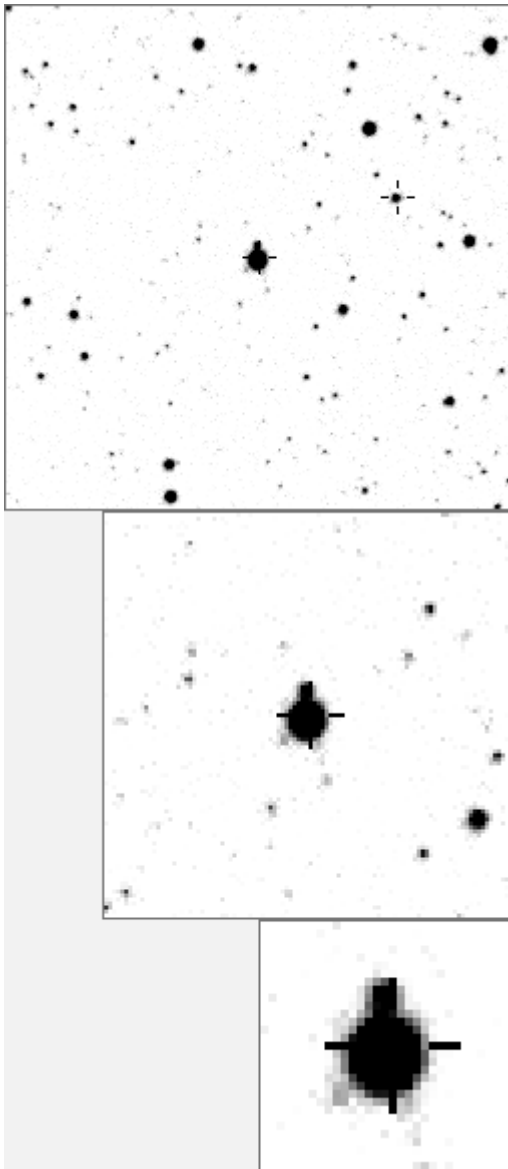


a00072



variable and brighter stars					
.	.	.	O 72 v		
.	e	n	a 742		
.	.	.	b 910		
.	.	b	c 1321		
.	.	.	d 1823		
.	.	k	e 2500		
.	.	.	d	f 2724	
.	.	i	g 3884		
m	.	.	h 4519		
.	j	.	g	i 4856	
.	l	.	.	j 5347	
.	.	.	h	k 5607 v	
.	.	.	.	l 7920	
.	f	.	.	m 7975	
.	c	.	.	n 9627	

.	.	.	O 72 v		
.	.	.	a 3884		
.	.	.	b 4856		
.	.	c	c 21809		
.	.	.	m	d 25212	
.	j	.	i	e 25761	
.	g	b	.	f 27623	
n	.	O	.	g 31560	
.	.	l	.	h 32260	
.	.	k	.	d	i 32624
.	.	h	.	.	j 39223
.	.	.	.	a	k 39927
.	.	.	e	.	l 42679
.	m 42868
f	n 45765

Bitmap sizes are 251, 101 and 31 pixels square, South up. The keys to the right refer to the 1st two bitmaps. The numbers in the key are those in my catalogue 'starlistA'. Stars marked with a cross have been found to be variable.

Data and comments on star a00072

SWid: a00072 / **USNO id: 3588 282501 / other id: TYC3588-2825-1**

Co-ordinates, x,y in image z1051: 2067.9 472.1

J2000 sky co-ordinates: 21 8 27.69 +45 26 54.17

CMC r'magnitude and 2MASS J,H,K magnitudes: 9.342 0 0 0

USNO B1.0 magnitudes, B1,R1,B2,R2,I2: 12.87 9.75 11.42 9.68 8.86

Misc comments :

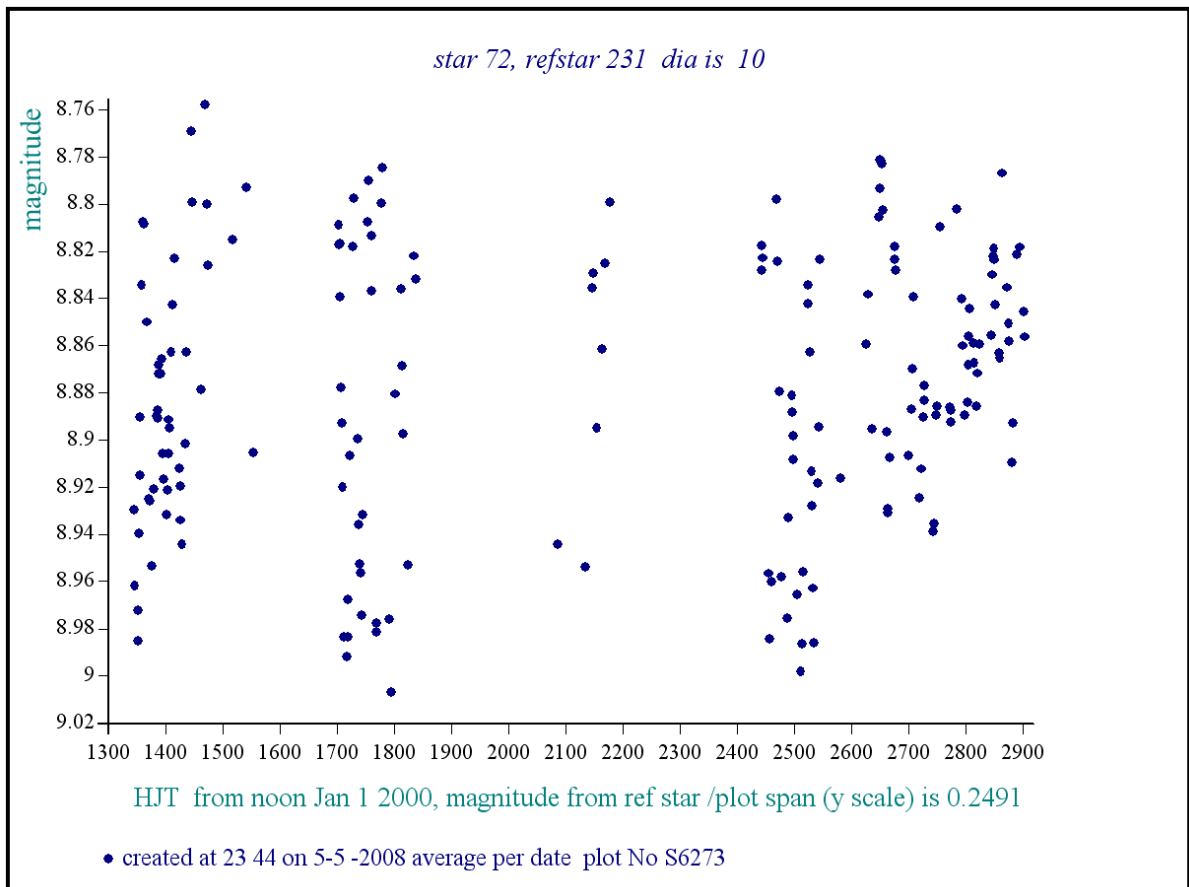
osc, about 26.4d, uniform and 210mmag in 2004, only 120 in 2007 and irreg magm to 231 is 8.76, magr is 240, period possibly shorter in 2007

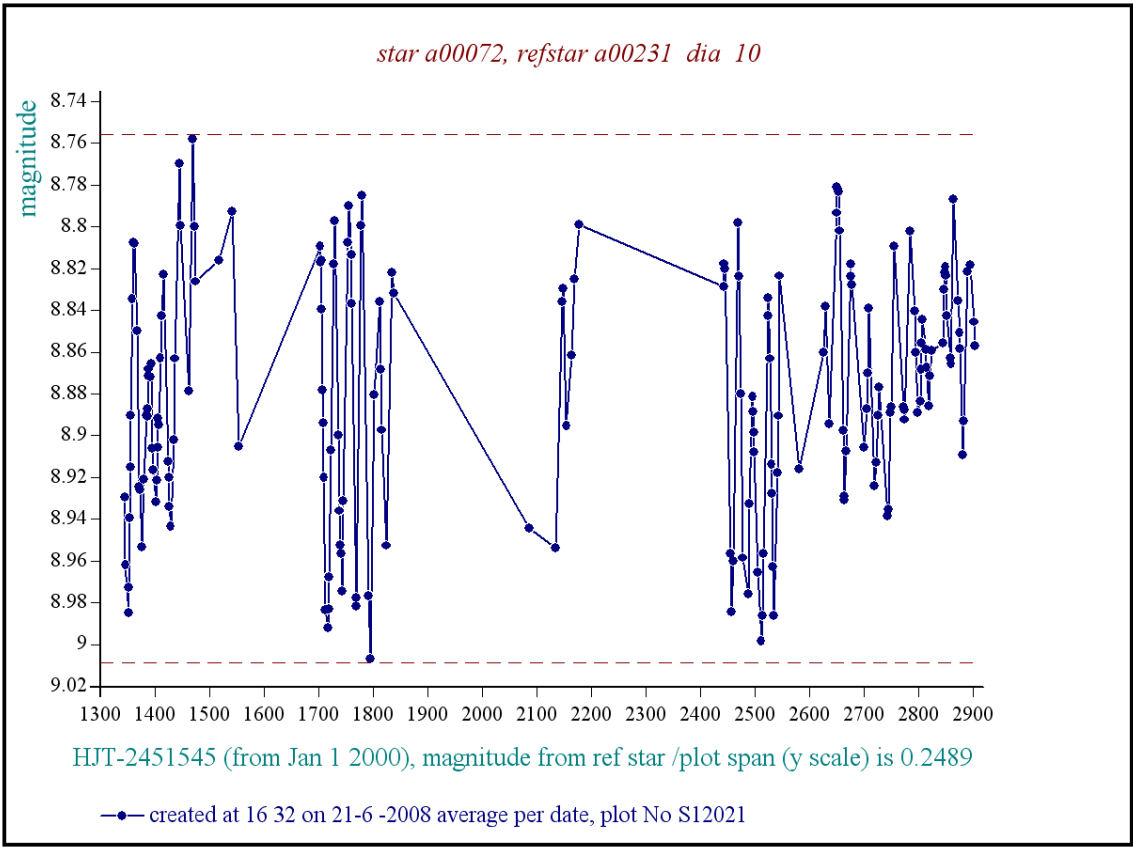
Comparison reference star(s) co-ordinates:

a00231: 21 8 12.62 +45 42 0.49

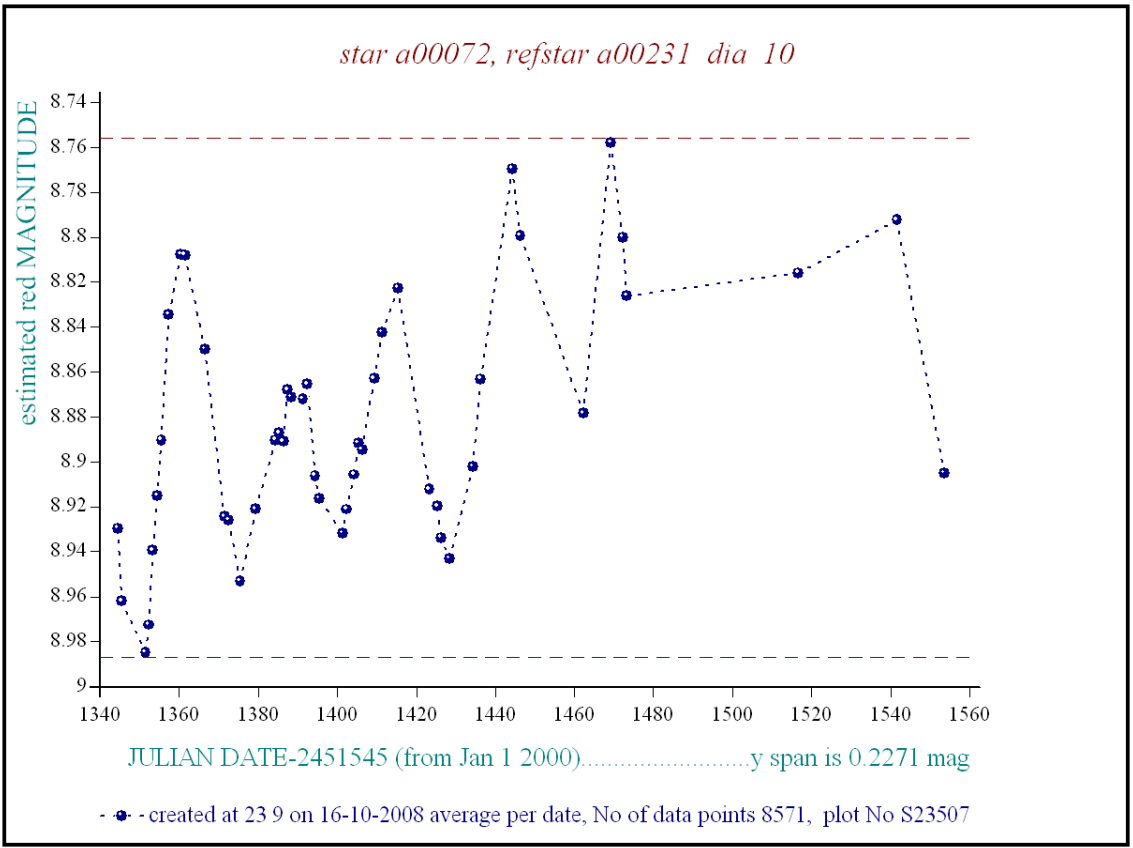
Reminder: All dates, JD and HJD are from Jan 1st 2000

- season 1: dates 1316 to 1553 is 9/8/2003 to 3/4/2004 (a)
- season 2: dates 1696 to 1838 is 23/8/2004 to 12/01/2005 (z)
- season 3: dates 2085 to 2177 is 16/9/2005 to 17/12/2005 (y)
- season 4: dates 2442 to 2755 is 8/9/2006 to 19/7/2007 (w)
- season 5: dates 2772 to 2903 is 4/8/2007 to 13/12/2007 (v)
- season 6: dates 2930 to 3266 is 9/1/2008 to 10/12/2008 (u)
- season 7: dates 3403 to 3539 is 26/4/2009 to 10/9/2009 (t)

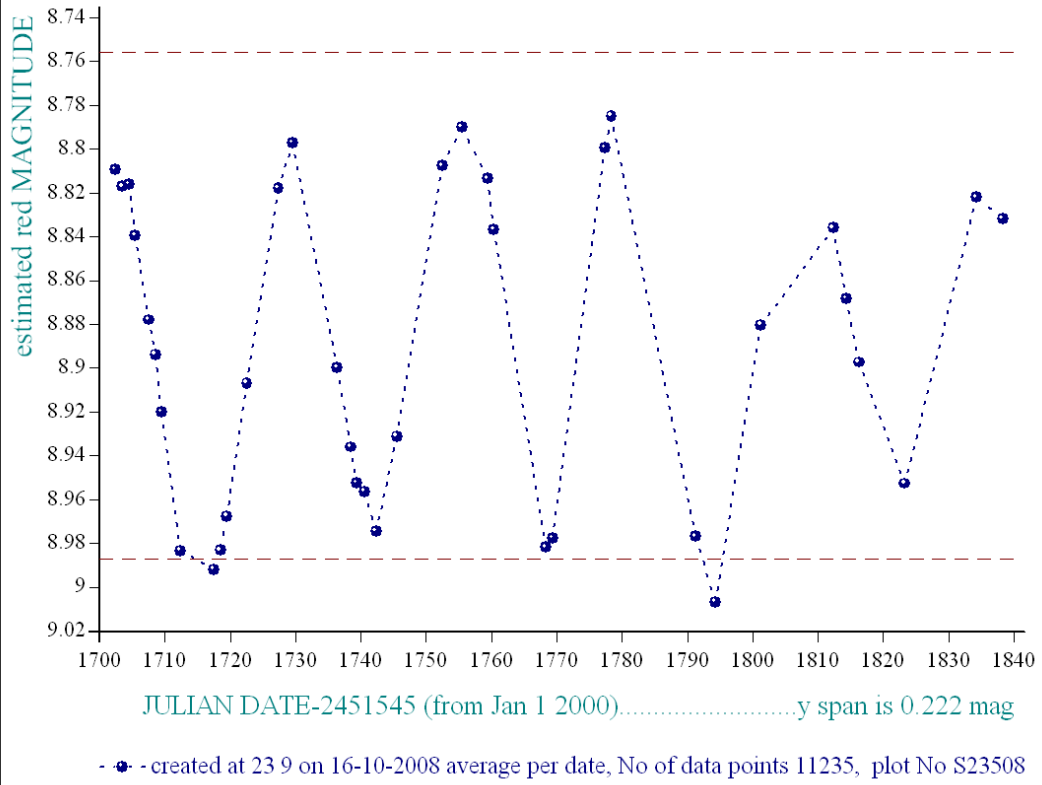




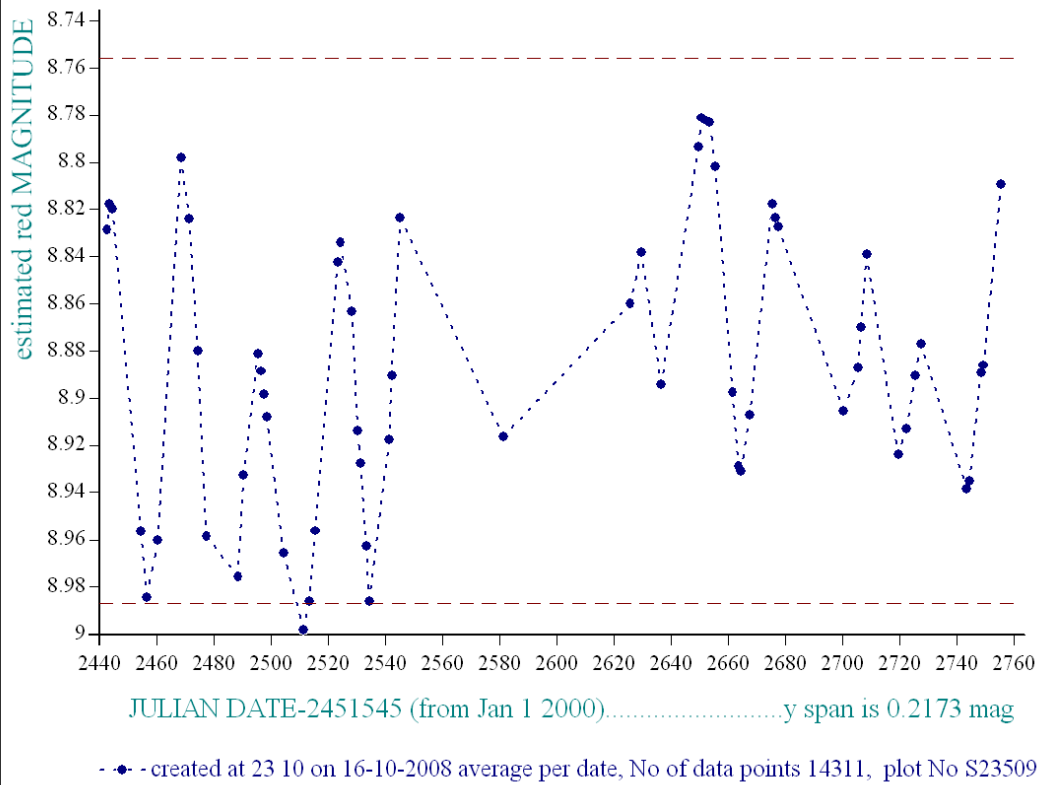
Below are the 4 main years, the signal is most clear in 2004



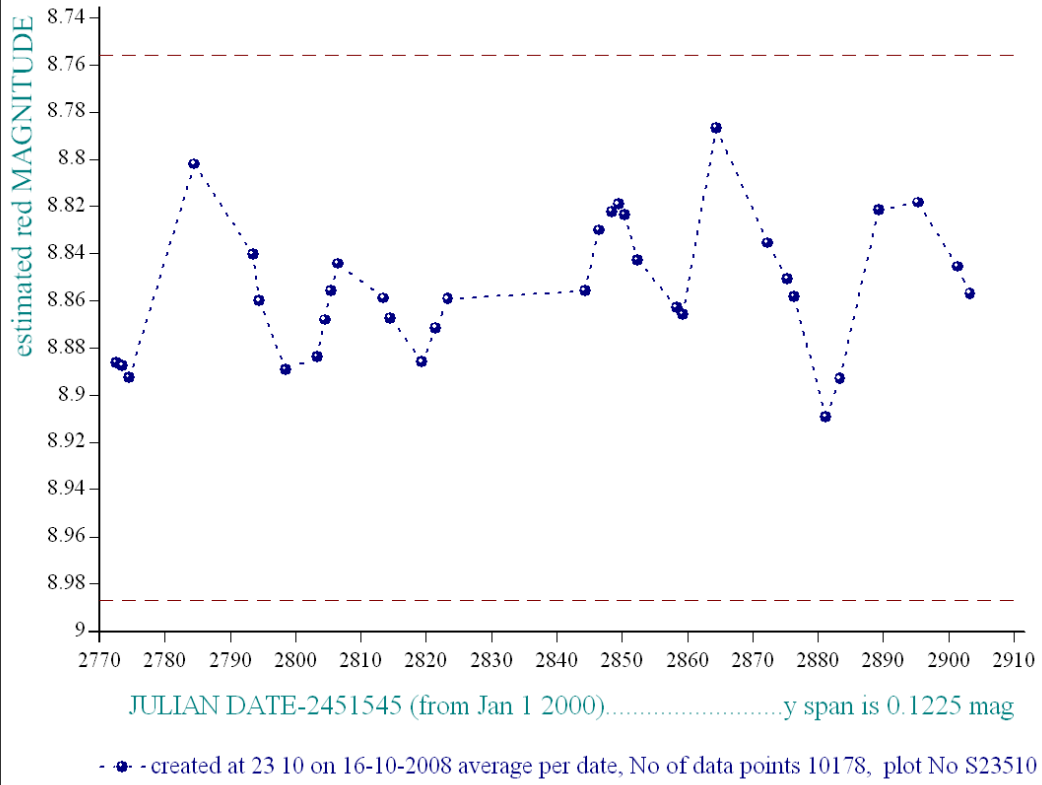
star a00072, refstar a00231 dia 10



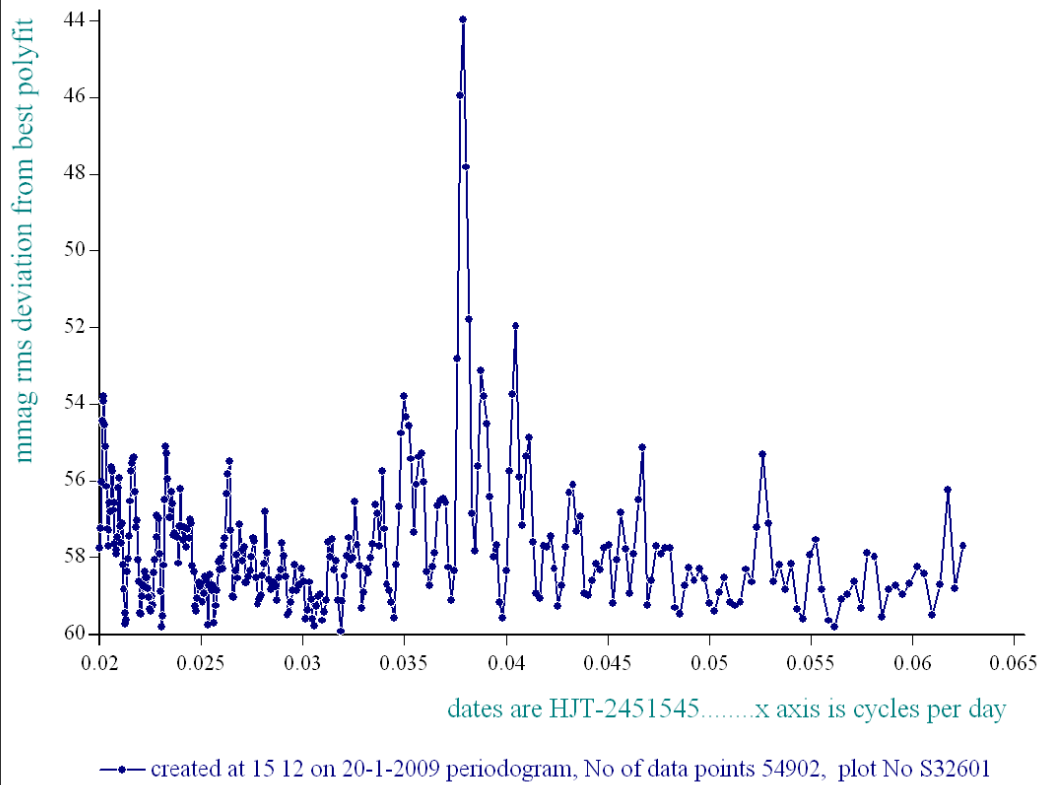
star a00072, refstar a00231 dia 10



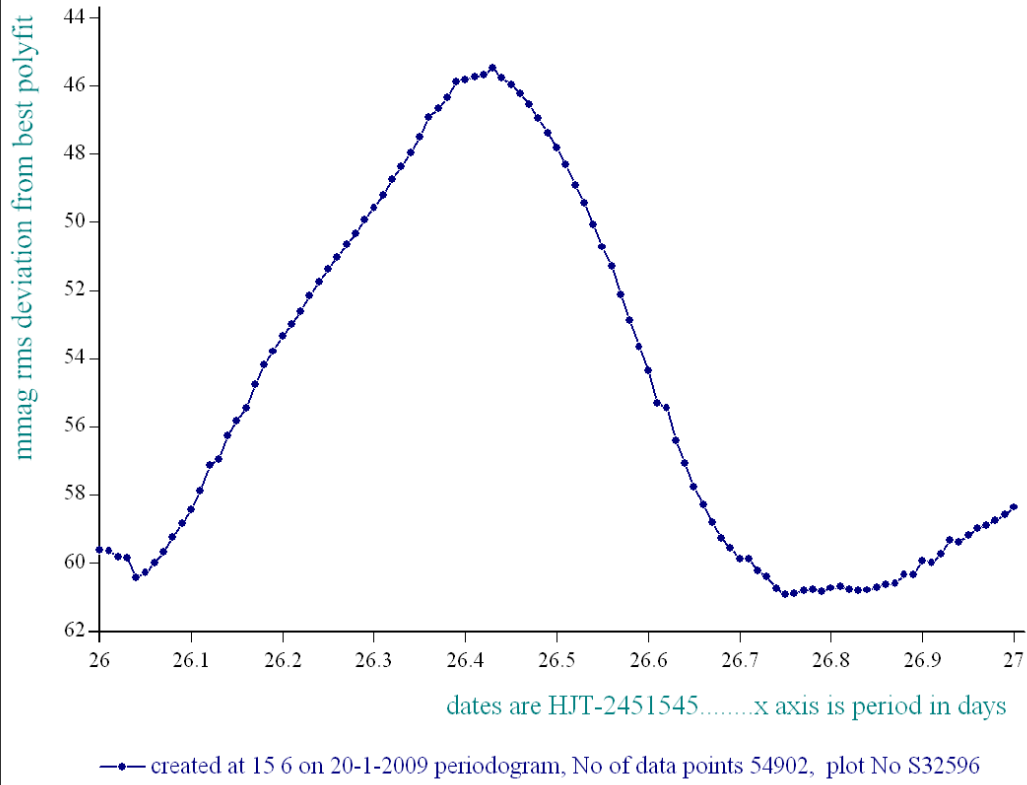
star a00072, refstar a00231 dia 10



periodogram of star a72 in dates 1344-2903, dia 10, ref a231



periodogram of star a72 in dates 1344-2903, dia 10, ref a231



star a72 dates 1702-1838, dia 10, ref a231, epoch 1235, period 26.455

