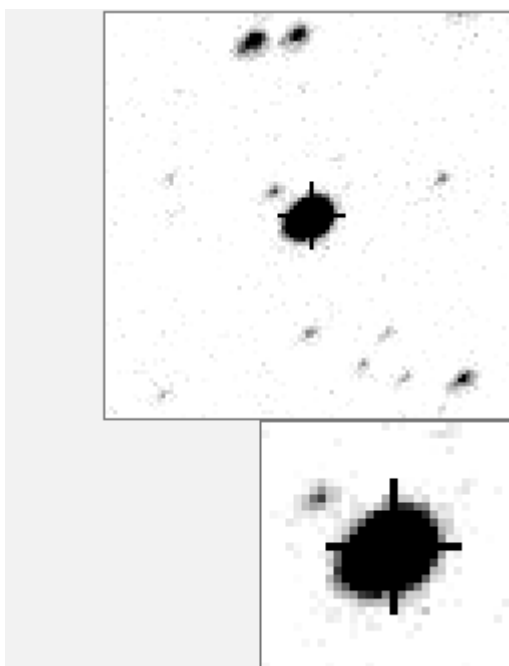


a00095



-----		-
- b	O 95
v a	a 5057
	b 7352
	c 10974
	d 23578
	e 25457
. m . . . d f . .		f 27473
. O		g 39415
.		h 42237
.		i 42752
.		j 46953
. e . j		k 53310
.		l 54363
. g . h . c .		m 57539
. . l		

Bitmap sizes are 101 and 31 pixels square, South up. The keys to the right refers to the top bitmap. The numbers in the key are those in my catalogue 'starlistA'. Stars marked with a cross have been found to be variable.

Data and comments on star a00095

SWid: a00095 / **USNO id: 3589 694501 / other id: TYC 3589 6945 1**

Co-ordinates, x,y in image z1051: 3876.3 87.5

J2000 sky co-ordinates: 21 15 12.9 +45 11 22.6

CMC r'magnitude and 2MASS J,H,K magnitudes: 9.403 5.689 4.696 4.389

USNO B1.0 magnitudes, B1,R1,B2,R2,I2: 12.71 9.59 11.26 9.52 8.7

Misc comments : very edgy

Feb 11 2008, irreg 27d, 8.95 to 9.15 (0.2) to 481 in 2004,
9.00 to 9.18 in 2003 (0.18), 26.5d, very similar to further ref 125

Comparison reference star(s) co-ordinates:

a00125: 21 13 48.45 +45 14 49.35

a00481: 21 14 47.56 +45 18 16.91

Reminder: **All dates, JD and HJD are from Jan 1st 2000**

season 1: dates 1316 to 1553 is 9/8/2003 to 3/4/2004 **(a)**

season 2: dates 1696 to 1838 is 23/8/2004 to 12/01/2005 **(z)**

season 3: dates 2085 to 2177 is 16/9/2005 to 17/12/2005 **(y)**

season 4: dates 2442 to 2755 is 8/9/2006 to 19/7/2007 **(w)**

season 5: dates 2772 to 2903 is 4/8/2007 to 13/12/2007 **(v)**

season 6: dates 2930 to 3266 is 9/1/2008 to 10/12/2008 **(u)**

season 7: dates 3403 to 3539 is 26/4/2009 to 10/9/2009 **(t)**

More years needed!

Difference with two comparison stars in 2004 shown below

