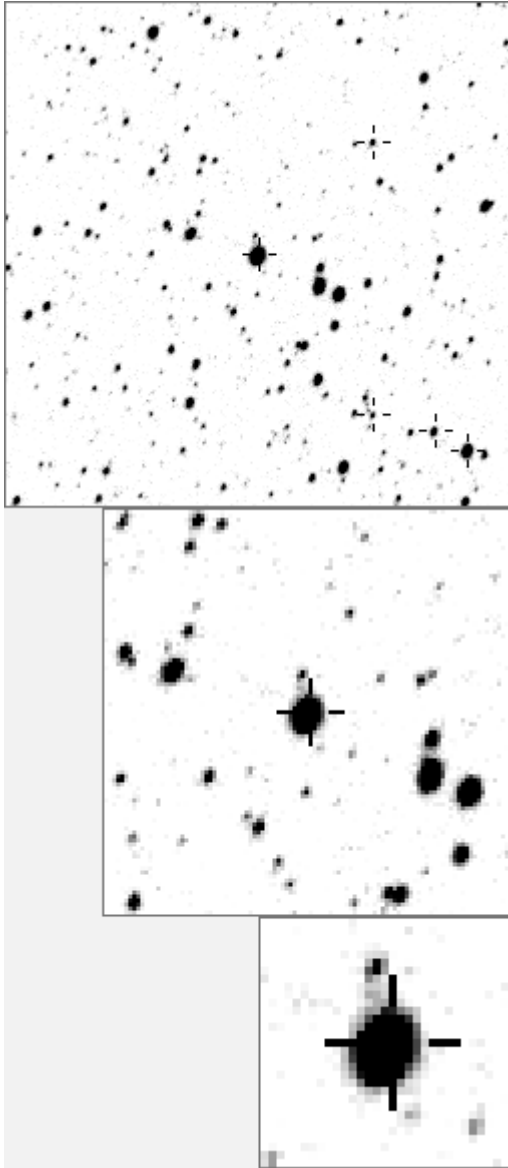


a00120



variable and brighter stars			
. d	O	120	v
.	a	544	
. i . . .	b	595	
.	c	780	v
. l	d	1241	
.	e	1341	
. f g	f	1852	
. O	g	1948	
. b	h	2249	
.	i	3193	
.	j	5424	v
. h	k	6707	v
. n j . . .	l	10482	v
. e c . . .	m	11268	v
k . m	n	14214	v

. i n	O	120	v
. m	a	544	
.	b	595	
.	c	1852	
. l	d	4804	
g . c	e	5113	
.	f	5327	
. O	g	7561	
. f	h	10123	
. k a	i	10940	
. b	j	11147	
. j	k	12521	
. d	l	15392	
.	m	16575	
. h e	n	17223	

Bitmap sizes are 251, 101 and 31 pixels square, South up. The keys to the right refer to the 1st two bitmaps. The numbers in the key are those in my catalogue 'starlistA'. Stars marked with a cross have been found to be variable.

Data and comments on star a00120

SWid: a00120 / **USNO id: 3592 662101 / other id: TYC 3592 6621 1**

Co-ordinates, x,y in image z1051: 1639.7 3607.8

J2000 sky co-ordinates: 21 6 46.26 +47 31 9.98

CMC r'magnitude and 2MASS J,H,K magnitudes: 9.637 6.408 5.478 5.206

USNO B1.0 magnitudes, B1,R1,B2,R2,I2: 12.36 9.37 11.04 9.3 8.48

Misc comments :

slow var, increase 0.16mag 2003 to 2007, to ref595, noisy, steps temperature 4100K
 Note for SW: To original ref of 123 it shows the 150mmag stepdown, 2784 to 2793
 It's a good study case for that, 52 or 277 are alternative refs also show the step
 To 595 magm is 9.10, magr 0.16, period 3200d plus

Comparison reference star(s) co-ordinates:

a00595: 21 6 55.78 +47 31 56.21

Reminder: **All dates, JD and HJD are from Jan 1st 2000**

season 1: dates 1316 to 1553 is 9/8/2003 to 3/4/2004 (a)

season 2: dates 1696 to 1838 is 23/8/2004 to 12/01/2005 (z)

season 3: dates 2085 to 2177 is 16/9/2005 to 17/12/2005 (y)

season 4: dates 2442 to 2755 is 8/9/2006 to 19/7/2007 (w)

season 5: dates 2772 to 2903 is 4/8/2007 to 13/12/2007 (v)

season 6: dates 2930 to 3266 is 9/1/2008 to 10/12/2008 (u)

season 7: dates 3403 to 3539 is 26/4/2009 to 10/9/2009 (t)

2008 and 2009 data needed

