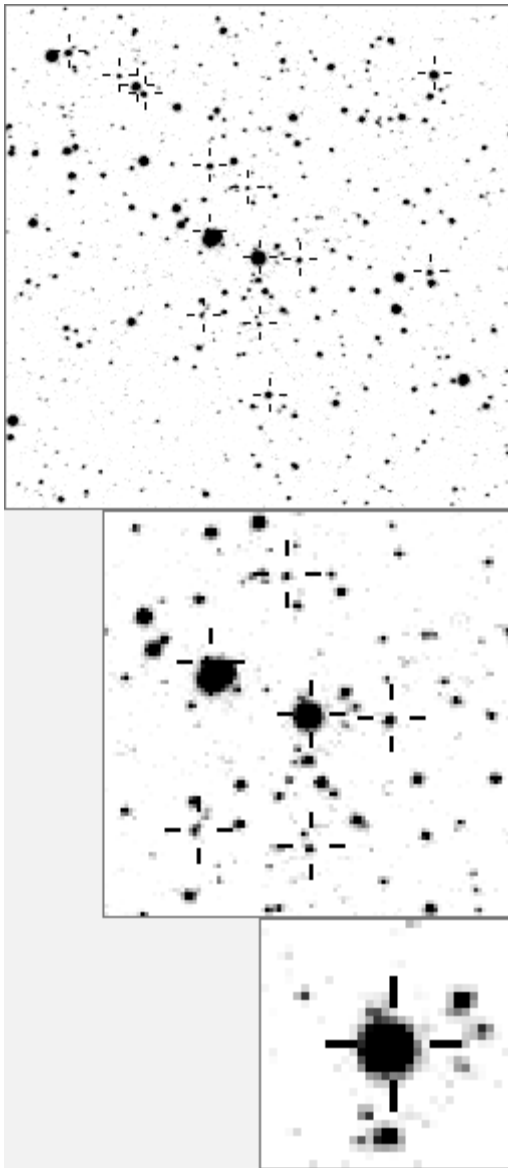


a00198



Variable and brighter stars	
.	O 198 v
. e	a 1195 v
. . . l i b . . .	b 2604 v
.	c 3286 v
. g	d 5875 v
.	e 6358 v
. d	f 7178 v
. O j h . . .	g 9083 v
.	h 9919 v
. m n k . . .	i 10311 v
.	j 12251 v
. f	k 14484 v
a	l 19576 v
.	m 20467 v
.	n 20570 v

. f c	O 198 v
.	a 3207
. n	b 3825
. a	c 5270
.	d 5875 v
. b d	e 8155
.	f 9083 v
. O k	g 9497
.	h 11326
. h	i 11743
. e	j 12182
. . . l g	k 12251 v
. m	l 20467 v
.	m 20570 v
. i j	n 21182 v

Bitmap sizes are 251, 101 and 31 pixels square, South up. The keys to the right refer to the 1st two bitmaps. The numbers in the key are those in my catalogue 'starlistA'. Stars marked with a cross have been found to be variable.

Data and comments on star a00198

SWid: a00198 / **USNO id: 3588 398401 / other id: TYC 3588 3984 1**

Co-ordinates, x,y in image z1051: 2643.9 2602.8

J2000 sky co-ordinates: **21 10 40.97 46 51 26.16**

CMC r'magnitude and 2MASS J,H,K magnitudes: 9.957 5.979 4.983 4.613

USNO B1.0 magnitudes, B1,R1,B2,R2,I2: 13.97 10.85 12.52 10.78 9.96

Misc comments :

A red variable, declining over the years and an osc should be classified as irreg surely?

Basic Data

Colour temp estimate: 3637 °K

Comparison reference star(s) co-ordinates:

a60: **21 12 6.61 46 49 29.38**

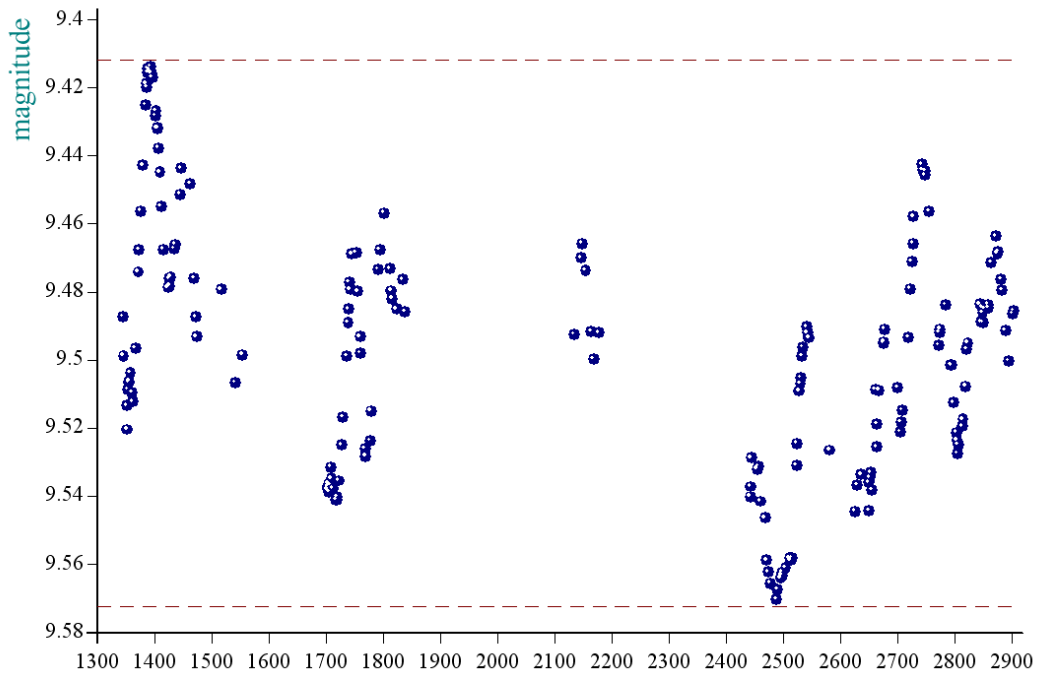
More lcs required here and 2008/9 data plus CMC mags

Reminder:

All dates, JD and HJD are from Jan 1st 2000

season 1: dates 1316 to 1553 is 9/8/2003 to 3/4/2004	(a)
season 2: dates 1696 to 1838 is 23/8/2004 to 12/01/2005	(z)
season 3: dates 2085 to 2177 is 16/9/2005 to 17/12/2005	(y)
season 4: dates 2442 to 2755 is 8/9/2006 to 19/7/2007	(w)
season 5: dates 2772 to 2903 is 4/8/2007 to 13/12/2007	(v)
season 6: dates 2930 to 3266 is 9/1/2008 to 10/12/2008	(u)
season 7: dates 3403 to 3539 is 26/4/2009 to 10/9/2009	(t)

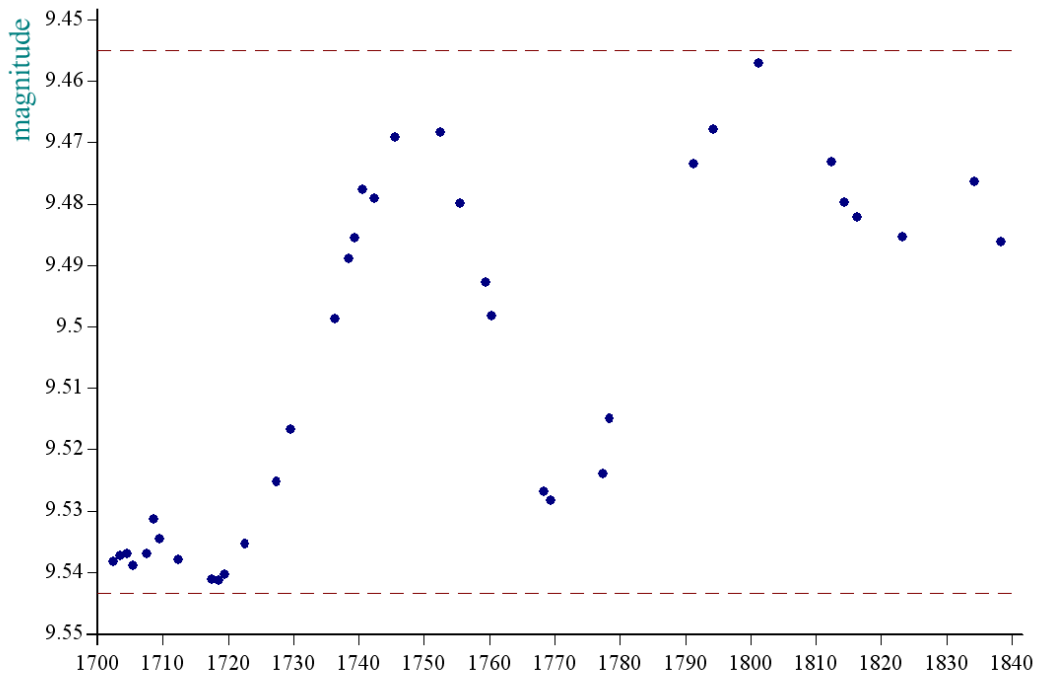
star a00198, refstar a00060 dia 10



HJT-2451545 (from Jan 1 2000), magnitude from ref star /plot span (y scale) is 0.1565

• created at 10 25 on 22-6 -2008 average per date, plot No S12140

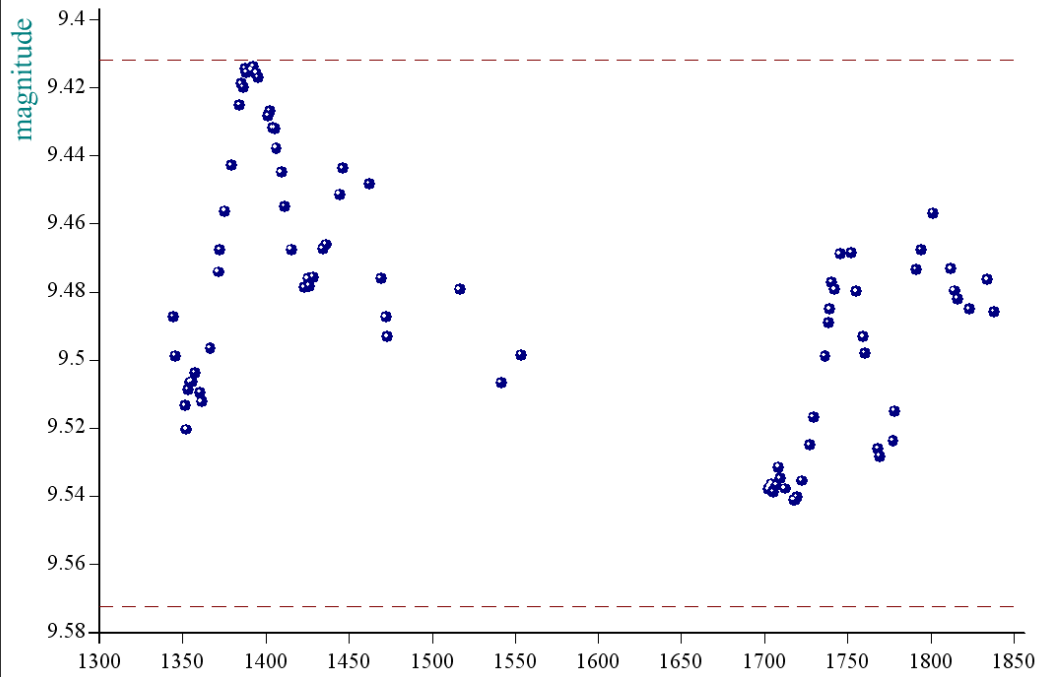
star a00198, refstar a00060 dia is 10



HJT-2451545 (from Jan 1 2000), magnitude from ref star /plot span (y scale) is 0.0843

• created at 17 42 on 2-6 -2008 average per date, plot No S9394

star a00198, refstar a00060 dia 10



HJT-2451545 (from Jan 1 2000), magnitude from ref star /plot span (y scale) is 0.1272

• created at 10 28 on 22-6 -2008 average per date, plot No S12147