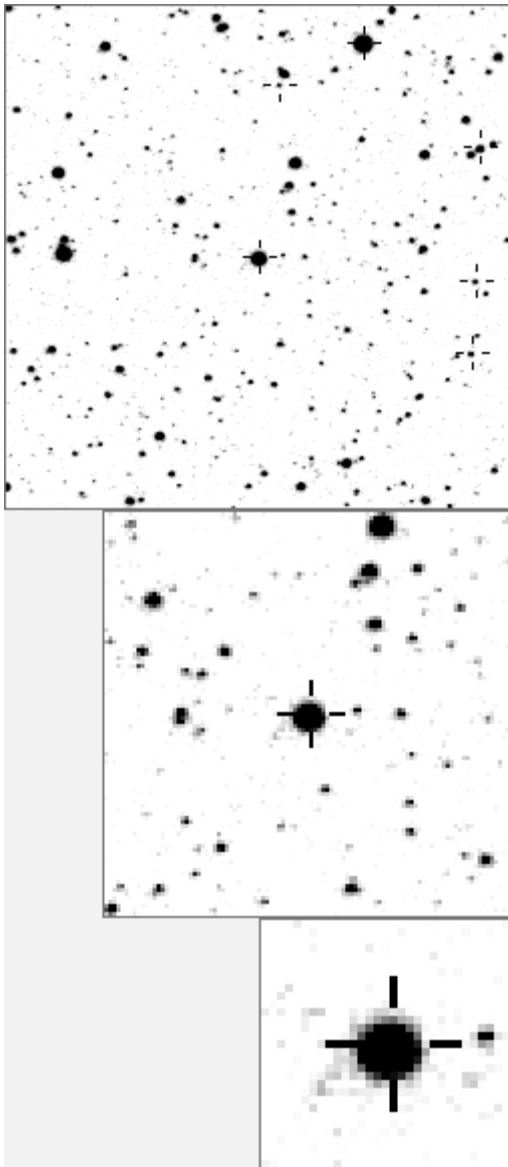


a00210



variables& brighter stars			
. j	O	210	v
. e a	a	38	v
. n	b	147	
.	c	824	
. d c . . . g . k	d	881	
.	e	2139	
.	f	2231	
. b O	g	2441	
. m .	h	2546	
.	i	3006	
. l .	j	4266	v
.	k	4339	v
. h	l	12223	v
. f	m	14003	v
.	n	19986	v

. a	O	210	v
.	a	824	
. b	b	4585	
. c	c	4866	
. d	d	8147	
. k . . i	e	10602	
.	f	11148	
. . j O . . m	g	11630	
.	h	12132	
.	i	14406	
.	j	14649	
.	k	16515	
. l f	l	16770	
. . n g	m	16927	
h	n	19386	

Bitmap sizes are 251, 101 and 31 pixels square, South up.
 The keys to the right refer to the 1st two bitmaps. The numbers in the key are those in my catalogue 'starlistA'.
 Stars marked with a cross have been found to be variable.

Data and comments on star a00210

SWid: a00210 / **USNO id: 3588 564201 / other id: TYC 3588 5642 1 1**

Co-ordinates, x,y in image z1051: 1718.1 1309

J2000 sky co-ordinates: **21 7 7.37 46 0 0.73**

CMC r'magnitude and 2MASS J,H,K magnitudes: 9.842 6.371 5.409 5.101

USNO B1.0 magnitudes, B1,R1,B2,R2,I2: 12.88 9.82 11.49 9.75 8.93

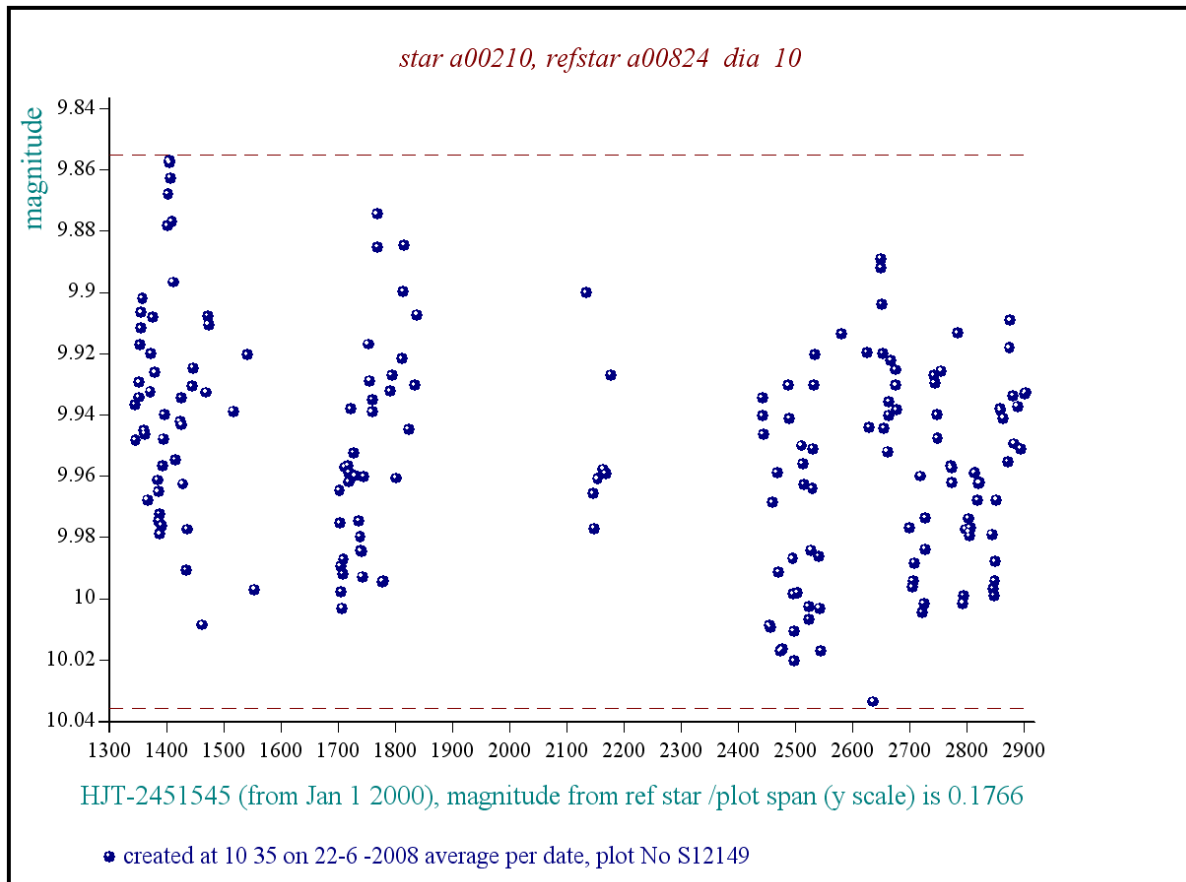
Misc comments :

irr osc, 0.19mag ish, persistent period around 23d, overlay gives 23.1
 To ref 327 magm is 9.61, magr is 0.187--to near 824, magr 0.177, magm 9.85
 to r38, magr is 0.175, magm 9.55. A simple period estimate can be got from
 the max at 1354.5 to that at 2513.4, 50 cycles at 23.178+/- 0.004 I'd estimate
 book 20a, p73

Comparison reference star(s) co-ordinates:

a824: 21 7 11.58 45 58 7.66

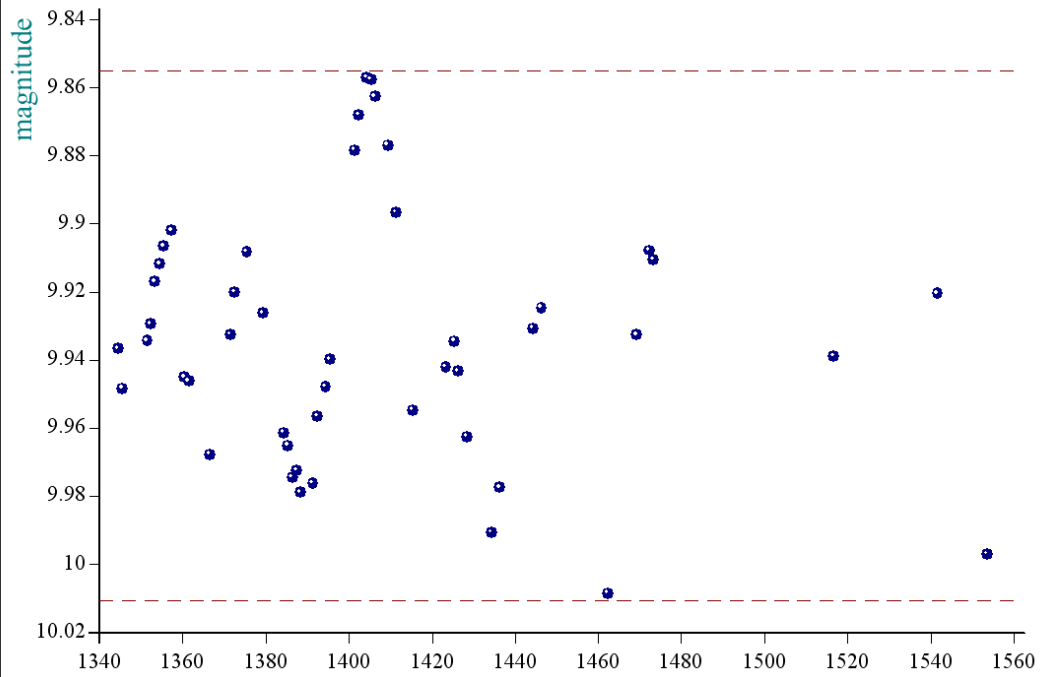
More years and CMC mags needed



Reminder: All dates, JD and HJD are from Jan 1st 2000

- season 1: dates 1316 to 1553 is 9/8/2003 to 3/4/2004 **(a)**
- season 2: dates 1696 to 1838 is 23/8/2004 to 12/01/2005 **(z)**
- season 3: dates 2085 to 2177 is 16/9/2005 to 17/12/2005 **(y)**
- season 4: dates 2442 to 2755 is 8/9/2006 to 19/7/2007 **(w)**
- season 5: dates 2772 to 2903 is 4/8/2007 to 13/12/2007 **(v)**
- season 6: dates 2930 to 3266 is 9/1/2008 to 10/12/2008 **(u)**
- season 7: dates 3403 to 3539 is 26/4/2009 to 10/9/2009 **(t)**

star a00210, refstar a00824 dia 10



HJT-2451545 (from Jan 1 2000), magnitude from ref star /plot span (y scale) is 0.1515

• created at 10 38 on 22-6 -2008 average per date, plot No S12152