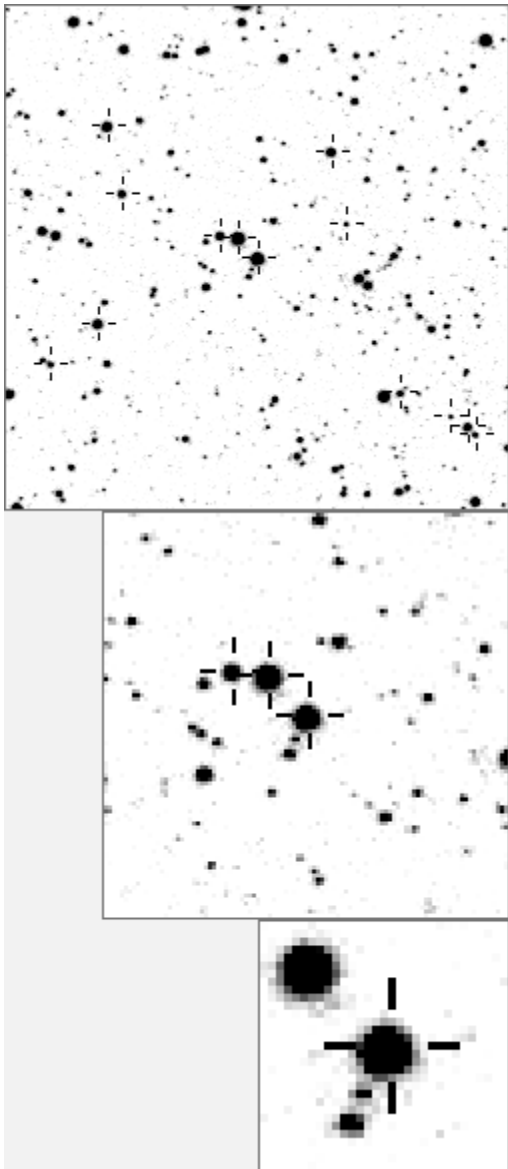


a00340



variables& brighter stars				
.	.	O	340 v	
.	.	b	a 363 v	
.	.	b	459	
.	d	c	545	
.	.	f	d 1156 v	
.	h	e	1272 v	
.	.	g	m	f 1782 v
.	.	O	g 2223 v	
.	.	.	h 3238 v	
.	e	.	i 3286 v	
.	k	.	j 6358 v	
.	.	j	k 8526 v	
.	.	n l	l 10311 v	
.	.	.	m 15476 v	
.	.	.	n 19576 v	

.	.	e	O 340 v	
.	.	l	a 363 v	
.	.	.	b 2223 v	
.	.	.	c 3230	
.	j	d	d 7112	
.	b	.	e 8463	
.	g	a	k	f 10147
.	.	O	g 10446	
.	n	h	h 10588	
.	c	.	i 15476 v	
.	.	.	j 15496	
.	.	f	k 17017	
.	.	.	l 18160	
.	.	.	m 18373	

Bitmap sizes are 251, 101 and 31 pixels square, South up.
 The keys to the right refer to the 1st two bitmaps. The numbers in the key are those in my catalogue 'starlistA'

Data and comments on star a00340

SWid: a00340 / **USNO id: 1367 419650 / other id: GSC03588-01272**

Co-ordinates, x,y in image z1051: 2477.9 2433.2

J2000 sky co-ordinates: 21 10 2.27 +46 44 44.21

CMC r'magnitude and 2MASS J,H,K magnitudes: 10.225 6.572 5.638 5.328

USNO B1.0 magnitudes, B1,R1,B2,R2,I2: 13.47 10.13 13.13 9.41 0

Misc comments :

irreg sinusoid 11.60 days in 2004, magm 9.60, magr 0.20 to ref 83

Comparison reference star(s) co-ordinates:

a00083: 21 9 31.22 +46 48 45.75

a01782: 21 10 10.71 +46 42 36.74

CMC mags and more years needed

Reminder: **All dates, JD and HJD are from Jan 1st 2000**

season 1: dates 1316 to 1553 is 9/8/2003 to 3/4/2004 (a)

season 2: dates 1696 to 1838 is 23/8/2004 to 12/01/2005 (z)

season 3: dates 2085 to 2177 is 16/9/2005 to 17/12/2005 (y)

season 4: dates 2442 to 2755 is 8/9/2006 to 19/7/2007 (w)

season 5: dates 2772 to 2903 is 4/8/2007 to 13/12/2007 (v)

season 6: dates 2930 to 3266 is 9/1/2008 to 10/12/2008 (u)

season 7: dates 3403 to 3539 is 26/4/2009 to 10/9/2009 (t)

