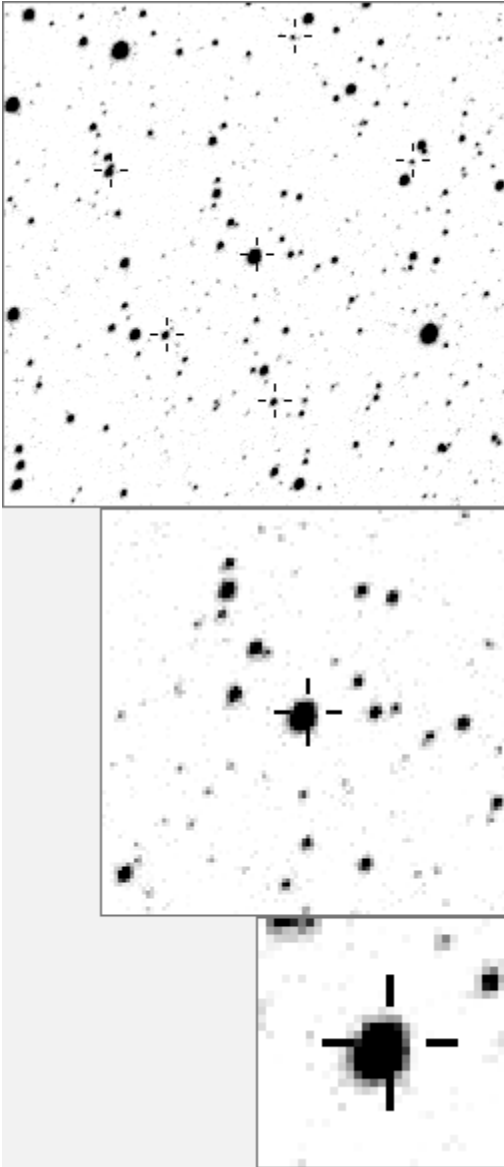


a00507



Variable and brighter stars			
e	h	O	507 v
.	b	a	52
c	n	b	123
.	c	428
.	d	995
.	m	
.	j	i	e 1452 v
.	f	1799
.	g	1808
.	O	h	1866
d	f k	a	i 1910
.	j	3913 v
.	k	7241 v
.	l	8202 v
.	l	8202 v
.	m	18734 v
.	n	20027 v
.	g	n	20027 v

.	O	507 v
.	k	a	4348
.	a	i	b 6990
.	g	c 7241 v
.	d	7309
.	d	e	10738
.	b	m	f 11815
.	O	n e
.	n	g 12573
.	h	12623
.	i	13640
.	j	j 15746
.	k	16236
.	l	16664
.	l	m	17011
c	h	n 20174
.	n	20174

Bitmap sizes are 251, 101 and 31 pixels square, South up. The keys to the right refer to the 1st two bitmaps. The numbers in the key are those in my catalogue 'starlistA'

Data and comments on star a00507

SWid: a00507 / **USNO id: 3592 470901 / other id: GSC 03592-04709**
 Co-ordinates, x,y in image z1051: 1508.5 3361.3
 J2000 sky co-ordinates: **21 6 15.83 +47 21 24.35**
 CMC r magnitude and 2MASS J,H,K magnitudes: 10.461 5.956 0 4.664
 USNO B1.0 magnitudes, B1,R1,B2,R2,I2: 13.84 10.72 12.39 10.65 9.83
 Misc comments :
 irreg, 30 ish day period. To 52, magm 10.11, magr 0.24 20a, p92 and more 21, p17

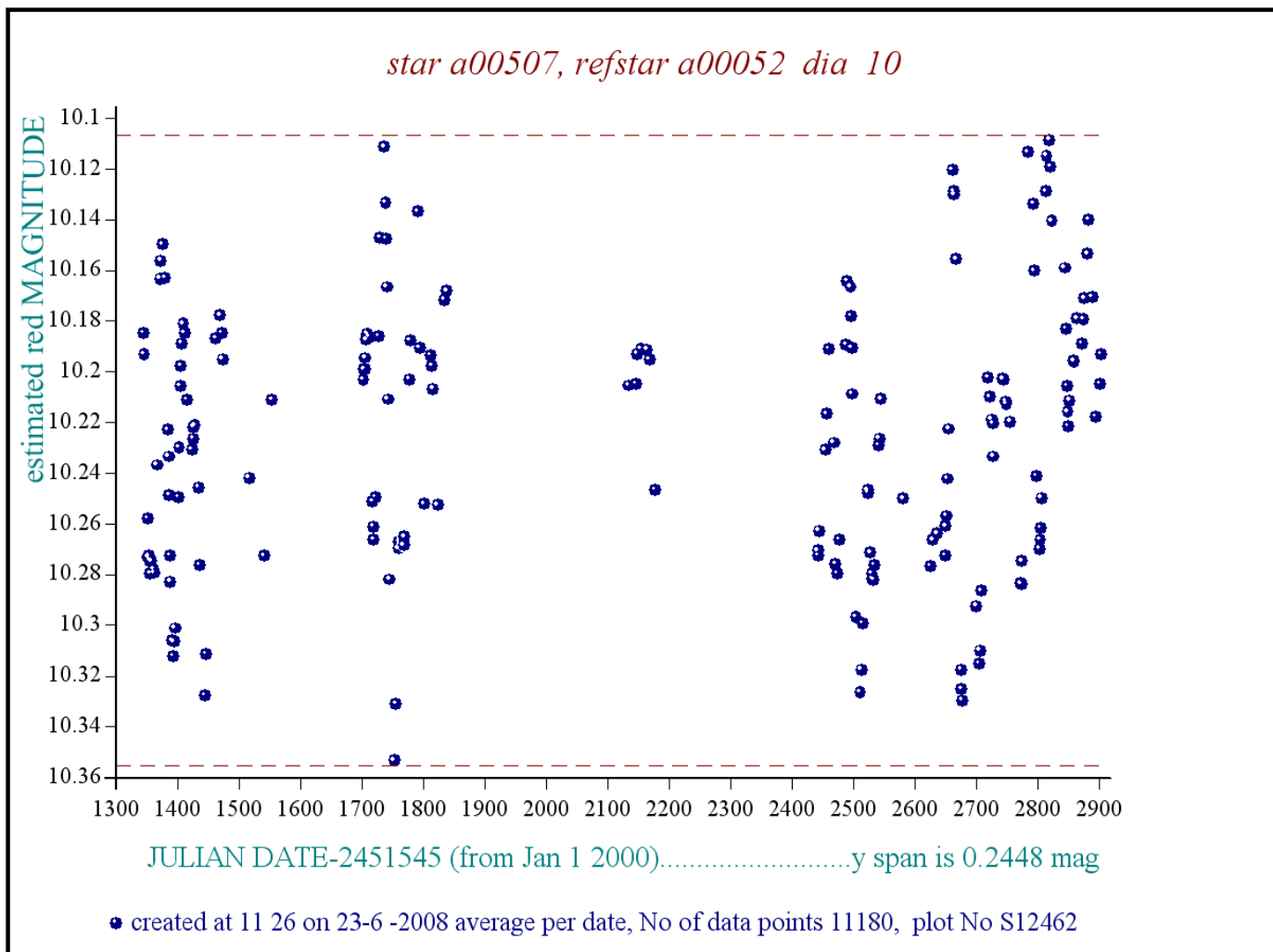
Comparison reference star(s) co-ordinates:

a00052: 21 6 36.26 +47 22 57.15

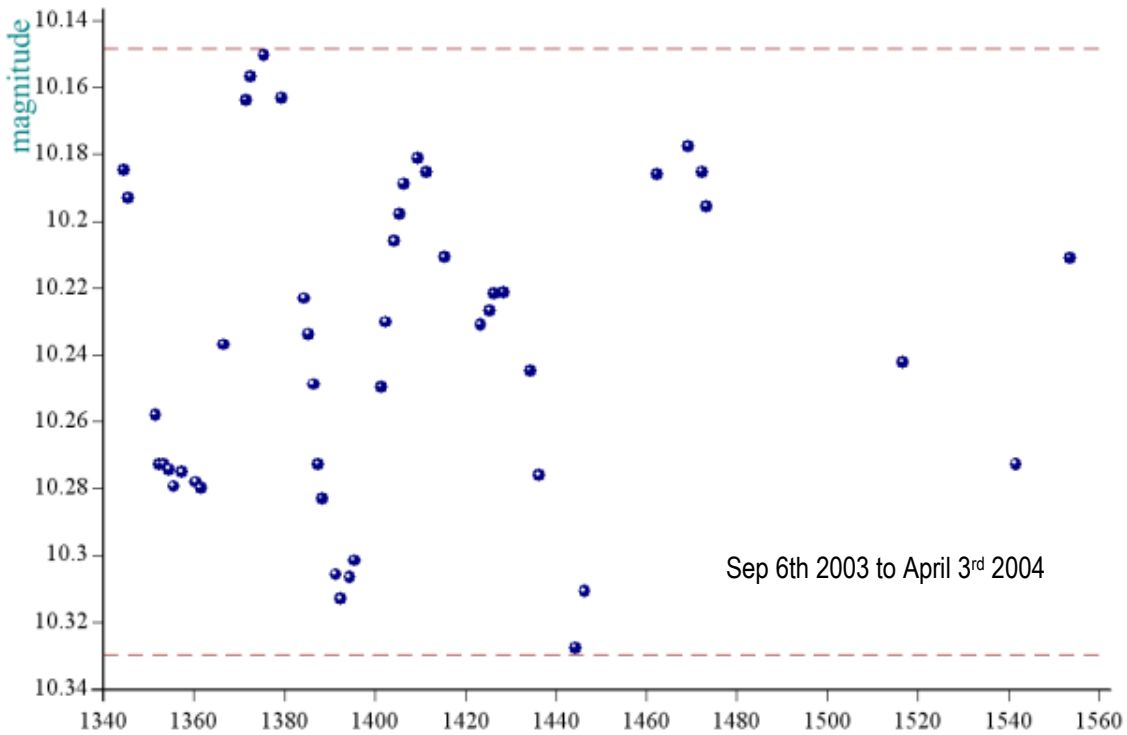
More years need to be added plus CMC mags

Reminder:

- season 1: dates 1316 to 1553 is 9/8/2003 to 3/4/2004 **(a)**
- season 2: dates 1696 to 1838 is 23/8/2004 to 12/01/2005 **(z)**
- season 3: dates 2085 to 2177 is 16/9/2005 to 17/12/2005 **(y)**
- season 4: dates 2442 to 2755 is 8/9/2006 to 19/7/2007 **(w)**
- season 5: dates 2772 to 2903 is 4/8/2007 to 13/12/2007 **(v)**
- season 6: dates 2930 to 3266 is 9/1/2008 to 10/12/2008 **(u)**
- season 7: dates 3403 to 3539 is 26/4/2009 to 10/9/2009 **(t)**



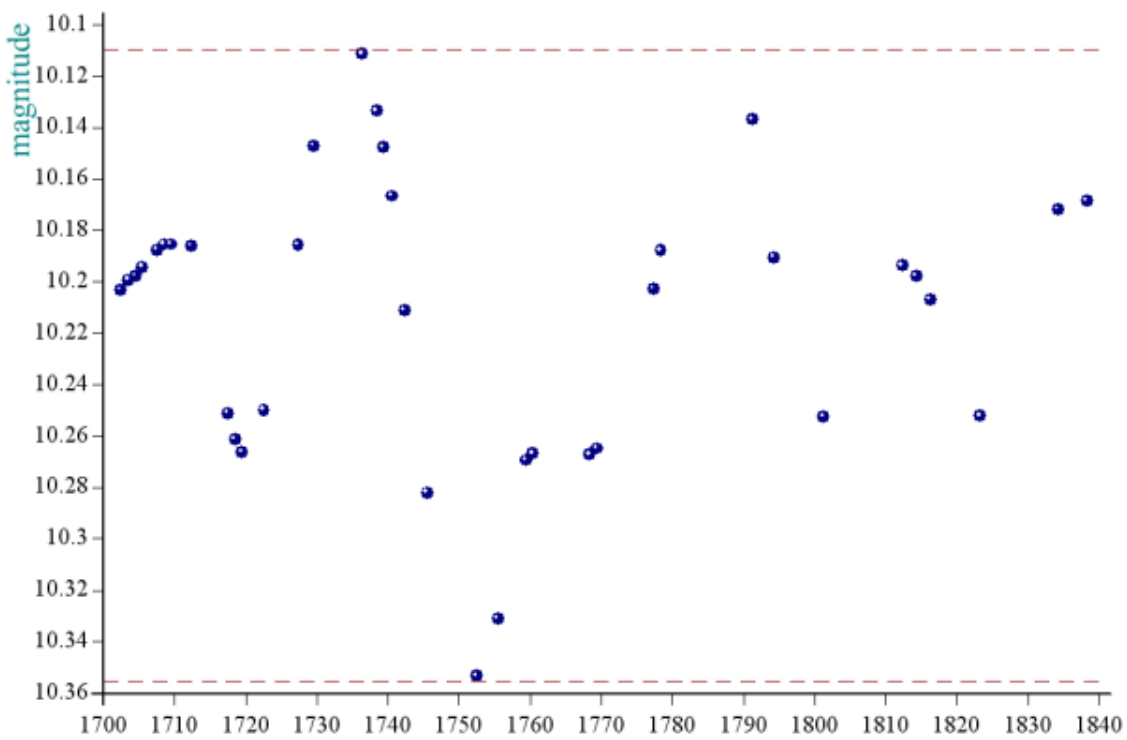
star a00507, refstar a00052 dia is 10



HJT-2451545 (from Jan 1 2000), magnitude from ref star /plot span (y scale) is 0.1773

• created at 18 5 on 8-6 -2008 average per date, plot No S10802

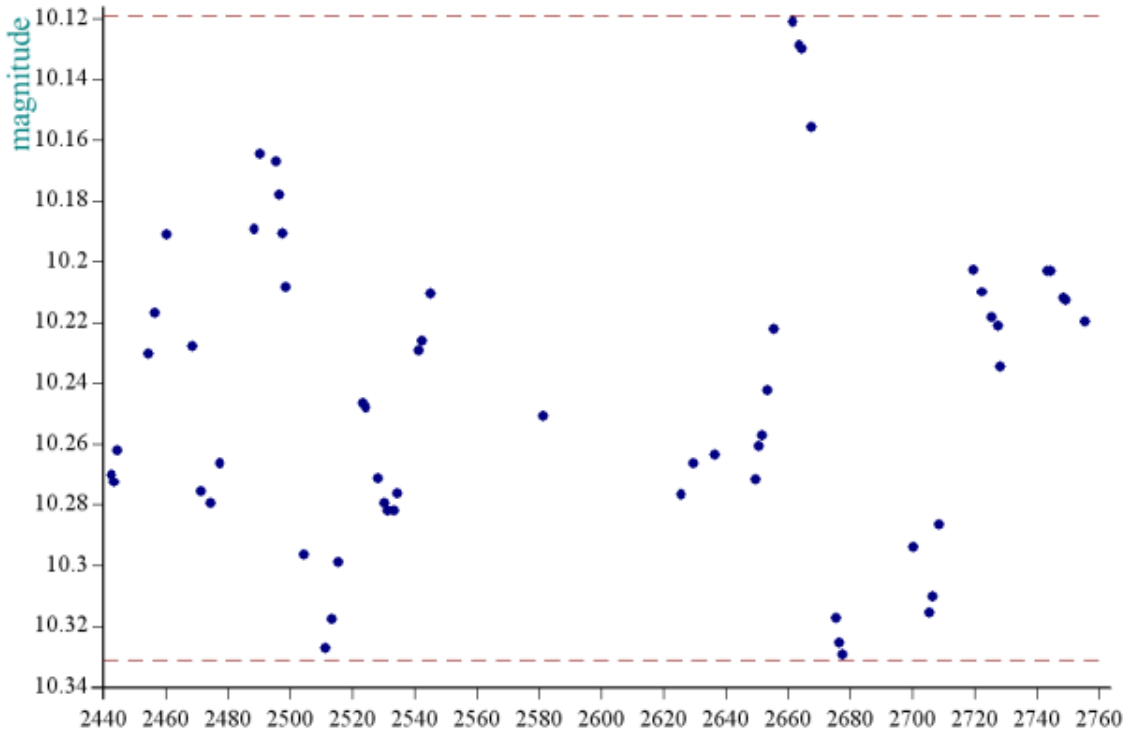
star a00507, refstar a00052 dia is 10



HJT-2451545 (from Jan 1 2000), magnitude from ref star /plot span (y scale) is 0.242

• created at 18 6 on 8-6 -2008 average per date, plot No S10803

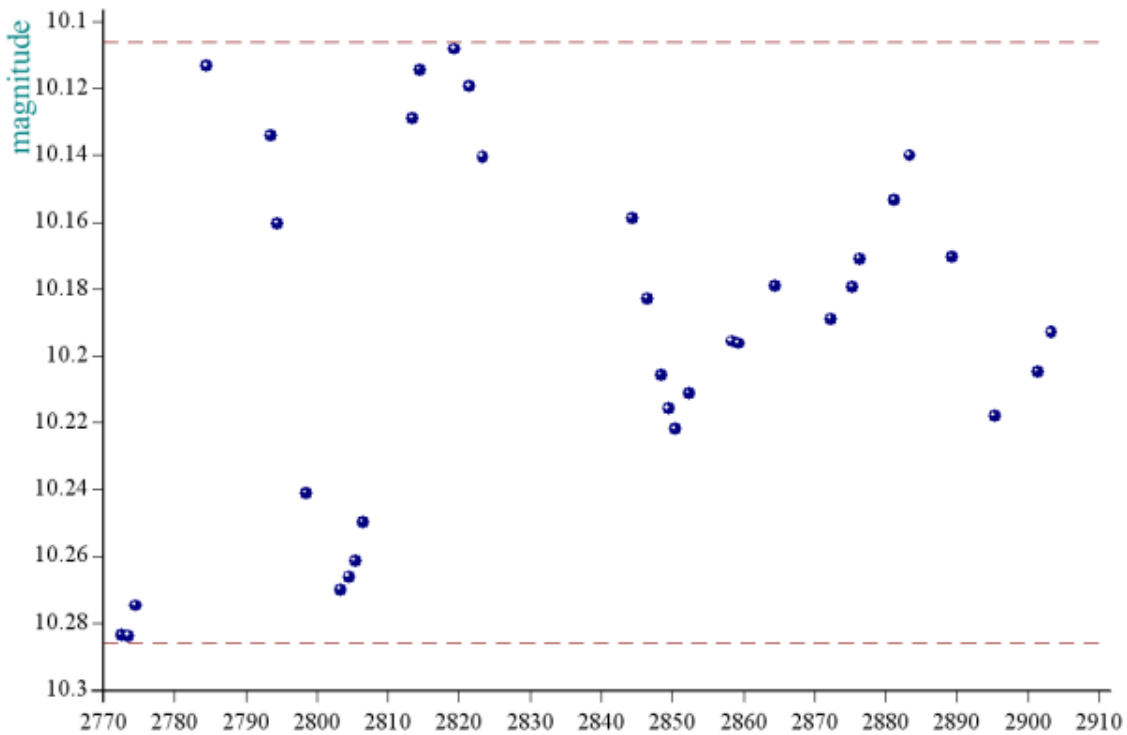
star a00507, refstar a00052 dia is 10



HJT-2451545 (from Jan 1 2000), magnitude from ref star /plot span (y scale) is 0.2083

• created at 18 6 on 8-6 -2008 average per date, plot No S10804

star a00507, refstar a00052 dia is 10



HJT-2451545 (from Jan 1 2000), magnitude from ref star /plot span (y scale) is 0.1756

• created at 18 17 on 8-6 -2008 average per date, plot No S10805