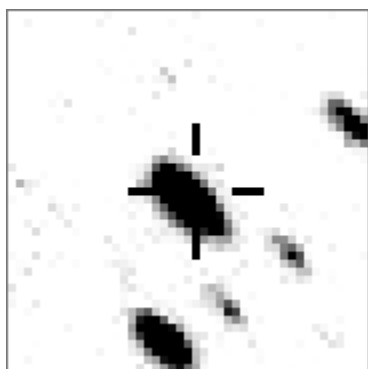


a00695—NSV 13632



```

variable & brighter stars
. . . . . O 695 v
. . . . . a 2016
. . . . . b 7055
. . . . . c 16141
. . . . . b d 27018
. . . . .
. . . . . O
. . . . .
. . . . . c
. . . . .
. . . . . d
. . . . . a
. . . . .

```

Bitmap sizes is 45 pixels square, South up. The numbers in the key are those in my catalogue 'starlistA'. Stars marked with a cross have been found to be variable.

This is a very 'edgy' star, always close to the chip corner as can be see from the x, y co-ords below. (the chip is 4080 square.)

Data and comments on star a00695

SWid: a00695 / **USNO id:** / **other id: NSV 13632**

Co-ordinates, x,y in image z1051: 4034.6 3858.1

J2000 sky co-ordinates: 21 16 7.03 +47 39 53.19

CMC r'magnitude and 2MASS J,H,K magnitudes: 10.921 6.512 5.246 4.607

USNO B1.0 magnitudes, B1,R1,B2,R2,I2: 15.71 0 14.63 10.68 8.92

Misc comments :

NSV 13632: this had period of 190 days in 2003, not moved so much since, edgy.

Nice sinewave in 2003 of period 166days (not 190).

To 275, magm 10.6, magr 0.283 // SEp08, look at aliases

NSV entry: NSV13632 1 21 16 07.0 47 39 53

Comparison reference star(s) co-ordinates:

a00275: 21 15 8.43 +47 27 47.15

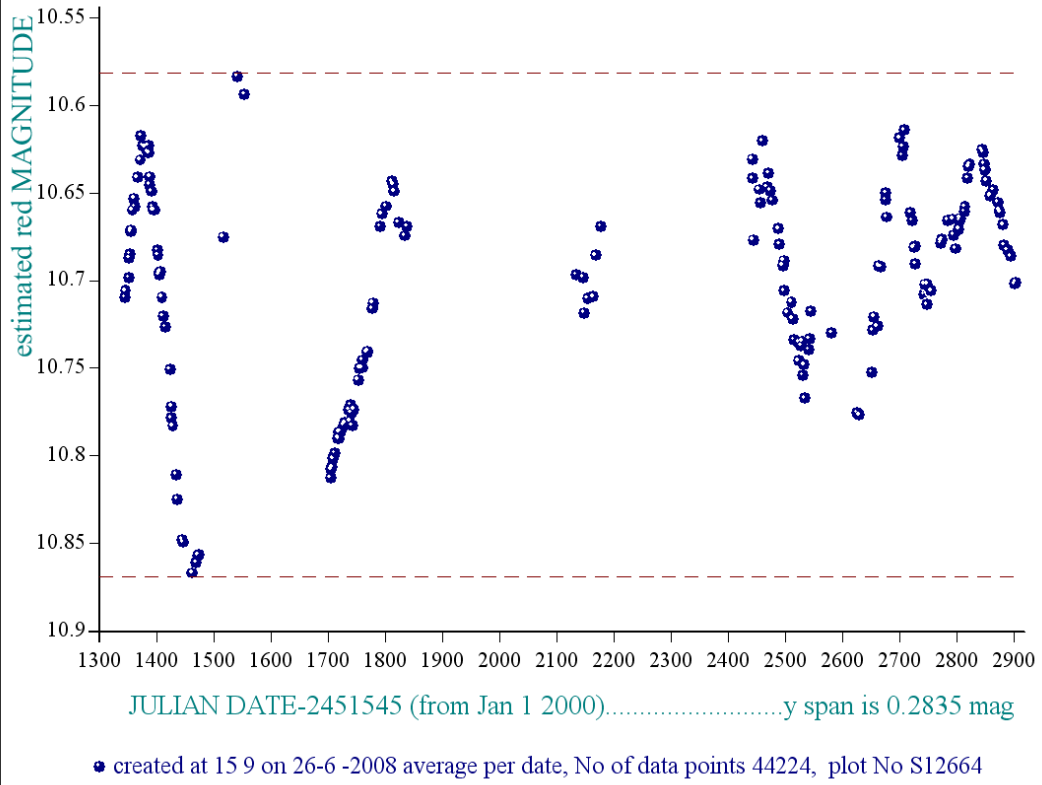
Two more years of data available and CMC mags needed

Reminder:

All dates, JD and HJD are from Jan 1st 2000

- season 1: dates 1316 to 1553 is 9/8/2003 to 3/4/2004 **(a)**
- season 2: dates 1696 to 1838 is 23/8/2004 to 12/01/2005 **(z)**
- season 3: dates 2085 to 2177 is 16/9/2005 to 17/12/2005 **(y)**
- season 4: dates 2442 to 2755 is 8/9/2006 to 19/7/2007 **(w)**
- season 5: dates 2772 to 2903 is 4/8/2007 to 13/12/2007 **(v)**
- season 6: dates 2930 to 3266 is 9/1/2008 to 10/12/2008 **(u)**
- season 7: dates 3403 to 3539 is 26/4/2009 to 10/9/2009 **(t)**

star a00695, refstar a00275 dia 13



star a00695, refstar a00275 dia 13

