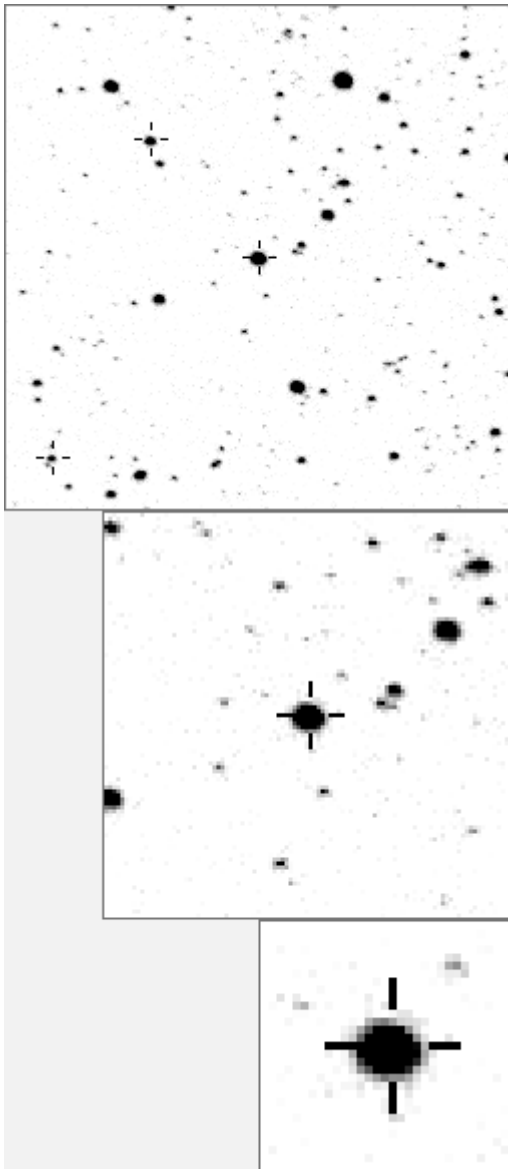


a00728



Variable and brighter stars		
.	O	728 v
. j .	a	173
. . . c a h	b	855
.	c	1138
. . . . g	d	1954
. l	e	2890
. d	f	3104
. O	g	3912 v
. . . . e	h	4042
.	i	5135
.	j	6087
. b	k	6161
.	il	6251
. n f m	m	6615
. . . . k	n	8011 v

e i	O	728 v
. g c	a	1954
. l	b	2890
.	c	6251
. a	d	9746
.	e	11093
. . . . n d	f	19125
. O j	g	20330
.	h	21997
. . . . m	i	22093
b k	j	22768
.	k	24366
.	l	27605
. h	m	32318
.	n	32969

Bitmap sizes are 251, 101 and 31 pixels square, South up. The keys to the right refer to the 1st two bitmaps. The numbers in the key are those in my catalogue 'starlistA'. Stars marked with a cross have been found to be variable.

Data and comments on star a00728

SWid: a00728 / **USNO id: 3588 652901 / other id: TYC 3588-6529-1**

Co-ordinates, x,y in image z1051: 825.1 1257.7

J2000 sky co-ordinates: 21 3 43.7 +45 57 38.27

CMC r'magnitude and 2MASS J,H,K magnitudes: 10.877 8.931 8.276 8.089

USNO B1.0 magnitudes, B1,R1,B2,R2,I2: 12.17 10.62 11.61 10.56 10.13

Misc comments :

Regular oscillations of period near to 29.8 days, biggest amplitude in 2004 of about 0.24mag.

The mean level also rises by 0.12 from 10.64 to 10.52. To ref 173 magm 10.45, magr 0.31

Comparison reference star(s) co-ordinates:

a00173: 21 3 53.7 +45 54 8.41

a01954: 21 3 51.69 +45 56 48

Reminder: **All dates, JD and HJD are from Jan 1st 2000**

season 1: dates 1316 to 1553 is 9/8/2003 to 3/4/2004 (a)

season 2: dates 1696 to 1838 is 23/8/2004 to 12/01/2005 (z)

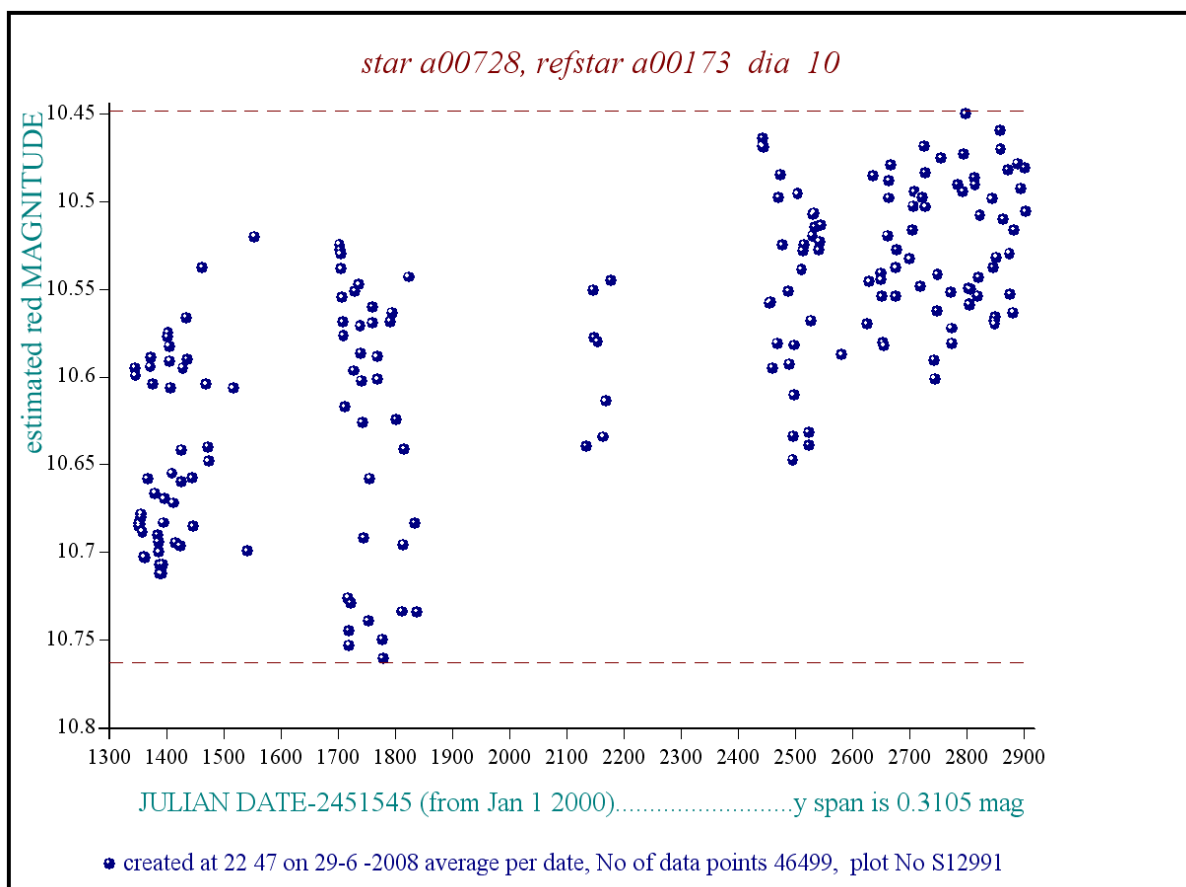
season 3: dates 2085 to 2177 is 16/9/2005 to 17/12/2005 (y)

season 4: dates 2442 to 2755 is 8/9/2006 to 19/7/2007 (w)

season 5: dates 2772 to 2903 is 4/8/2007 to 13/12/2007 (v)

season 6: dates 2930 to 3266 is 9/1/2008 to 10/12/2008 (u)

season 7: dates 3403 to 3539 is 26/4/2009 to 10/9/2009 (t)



These with 3 different refs

FIG 1805 - Average per date plot, star a00728

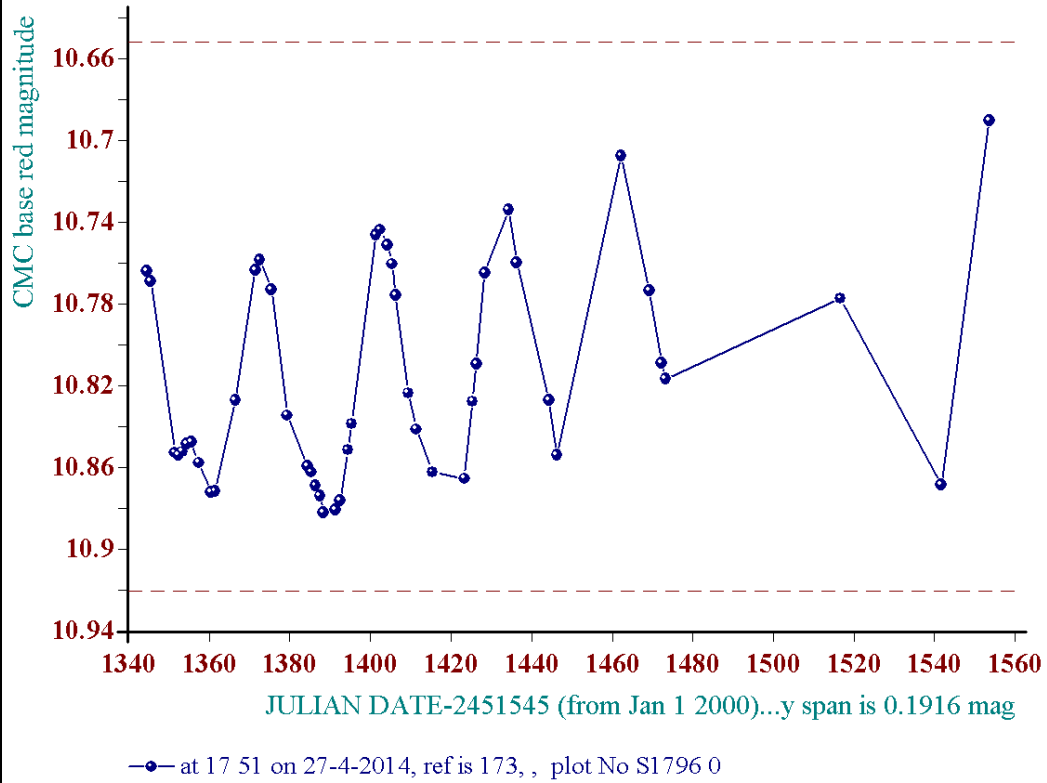


FIG 1801 - Average per date plot, star a00728

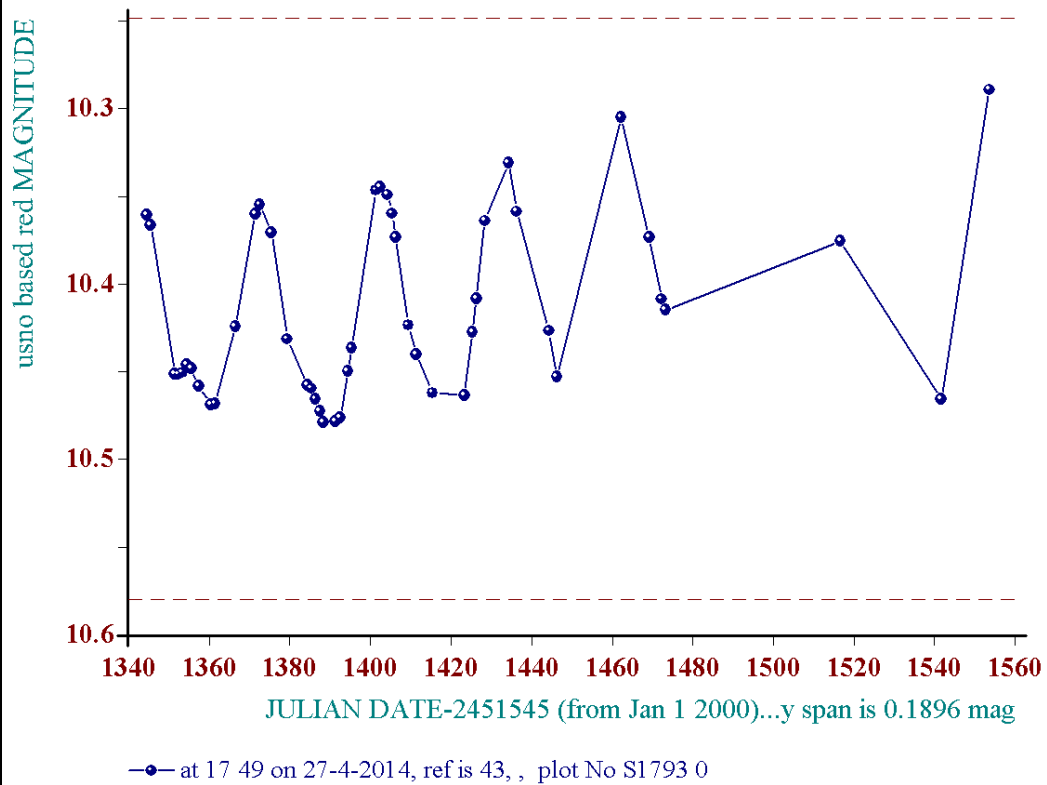
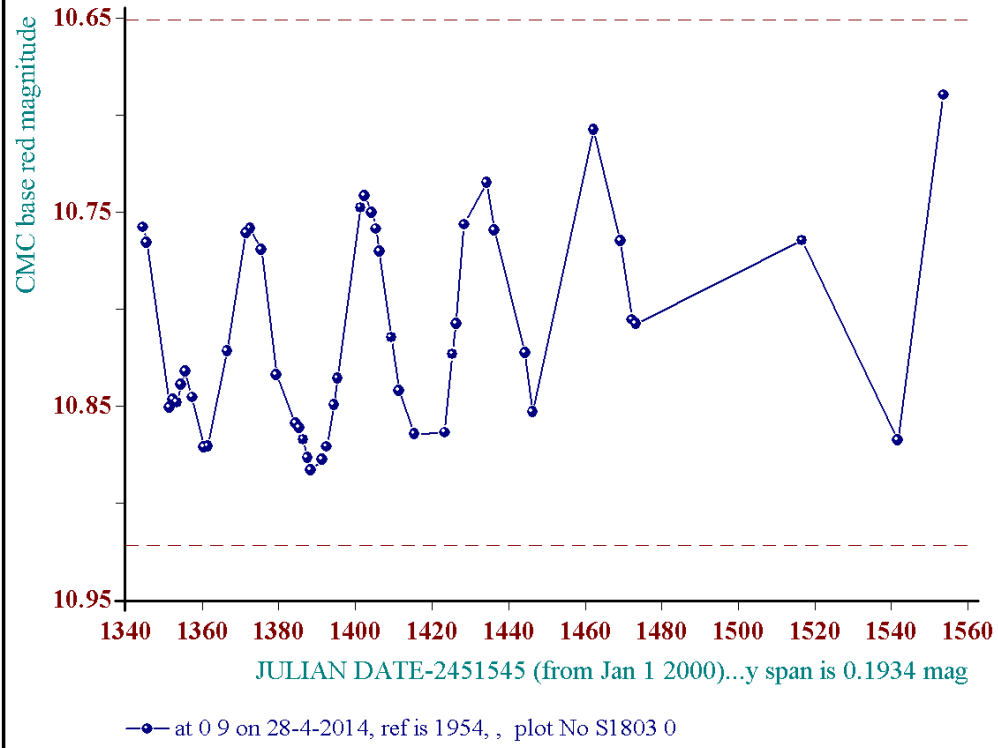


FIG 1820 - Average per date plot, star a00728



star a00728, refstar a00173 dia 10

