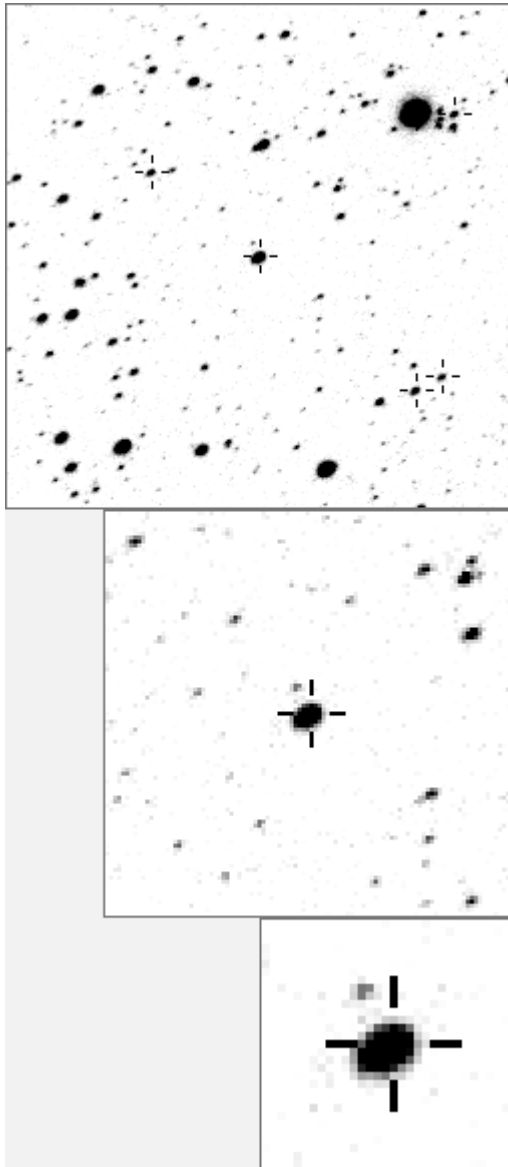


a00853



Variable and brighter stars			
.	n . .	O 853 v
.	a 107
. . g	b 257
. k .	c 1173
. f	d 1223
. l	e 1430
.	f 1570
. O	g 2166
.	h 2454
. e	i 2579
.	j 5246 v
. m	k 5286 v
. c	l 7742 v
. h . b . d a	m 7869 v
.	n 10946 v

.	O 853 v
. e f	a 8565
. c . b	b 9429
. l	c 16571
. h	d 18126
.	e 18550
. k	f 20101
. O	g 22839
.	h 27655
.	i 29330
. d	j 31133
. n	k 32218
. j	i
.	l 34425
.	m 34636
.	n 34750
. g			

Bitmap sizes are 251, 101 and 31 pixels square, South up. The keys to the right refer to the 1st two bitmaps. The numbers in the key are those in my catalogue 'starlistA'. Stars marked with a cross have been found to be variable.

Data and comments on star a00853

SWid: a00853 / **USNO id: 1369 434024 / other id: GSC 03592-06253**

Co-ordinates, x,y in image z1051: 767.5 2695

J2000 sky co-ordinates: 21 3 25.01 +46 54 36.13

CMC r'magnitude and 2MASS J,H,K magnitudes: 11.102 7.042 6.111 5.729

USNO B1.0 magnitudes, B1,R1,B2,R2,I2: 14 10.7 13.93 10.67 9.29

Misc comments :

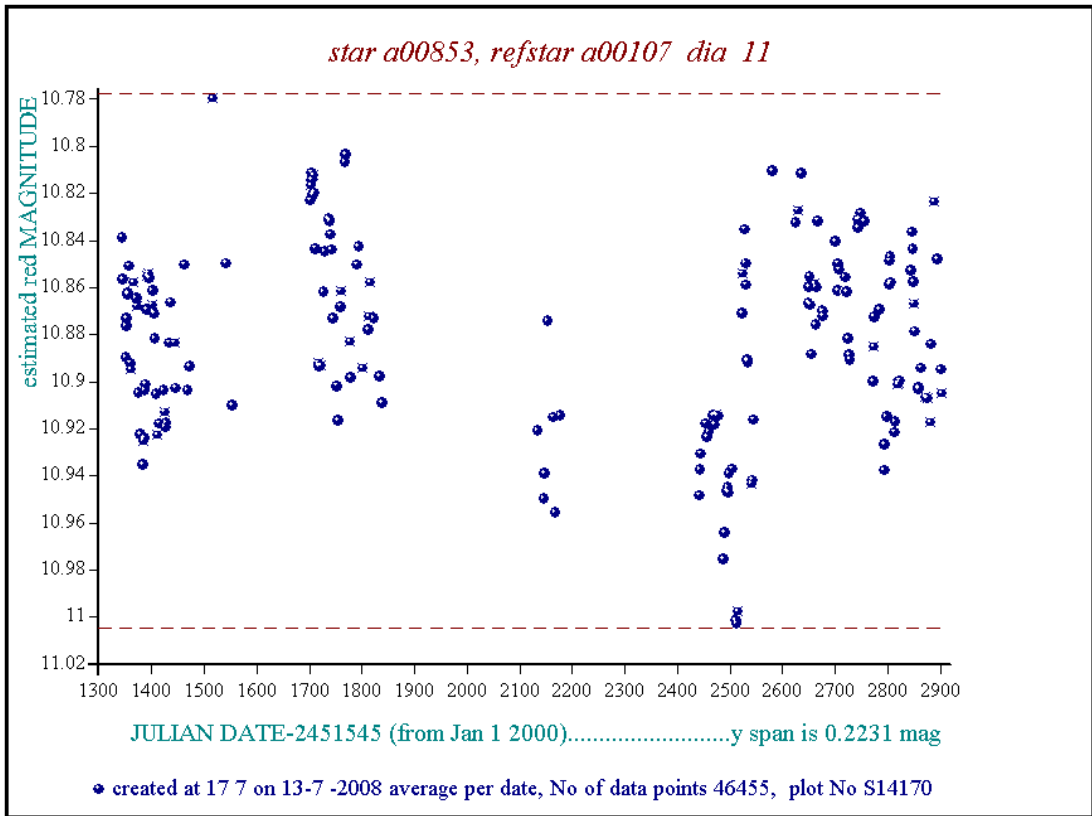
Irreg osc, 28d, 0.22mag. To ref64 span .222, mean level varies a little, period 28/30d

Comparison reference star(s) co-ordinates:

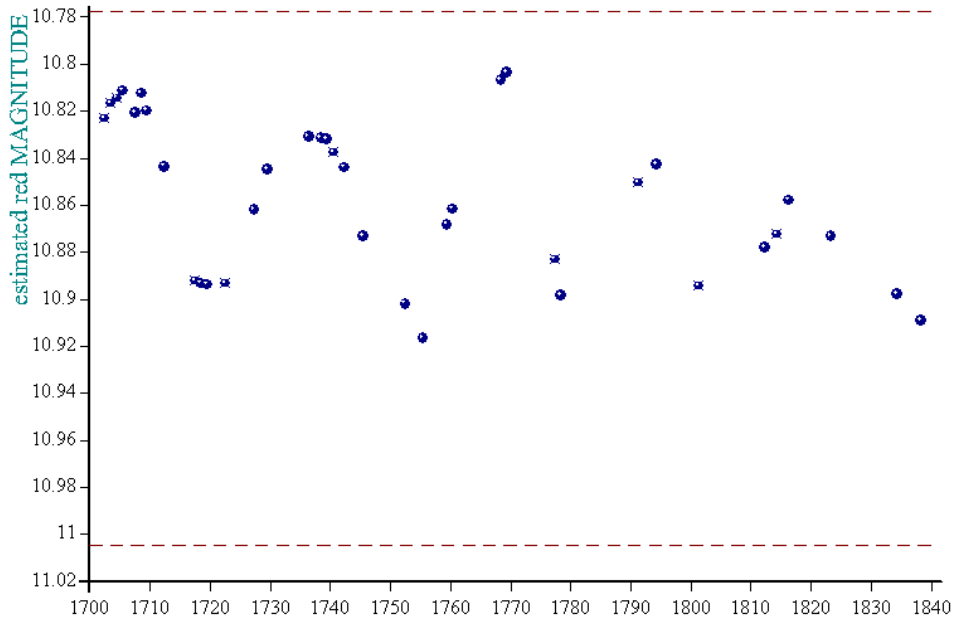
a01097: 21 7 24.03 +46 32 43.46

Needs CMC mags and more plots

Reminder: **All dates, JD and HJD are from Jan 1st 2000**
season 1: dates 1316 to 1553 is 9/8/2003 to 3/4/2004 **(a)**
season 2: dates 1696 to 1838 is 23/8/2004 to 12/01/2005 **(z)**
season 3: dates 2085 to 2177 is 16/9/2005 to 17/12/2005 **(y)**
season 4: dates 2442 to 2755 is 8/9/2006 to 19/7/2007 **(w)**
season 5: dates 2772 to 2903 is 4/8/2007 to 13/12/2007 **(v)**
season 6: dates 2930 to 3266 is 9/1/2008 to 10/12/2008 **(u)**
season 7: dates 3403 to 3539 is 26/4/2009 to 10/9/2009 **(t)**



star a00853, refstar a00107 dia 11



JULIAN DATE-2451545 (from Jan 1 2000).....y span is 0.1129 mag

• created at 17 12 on 13-7 -2008 average per date, No of data points 11230, plot No S14171