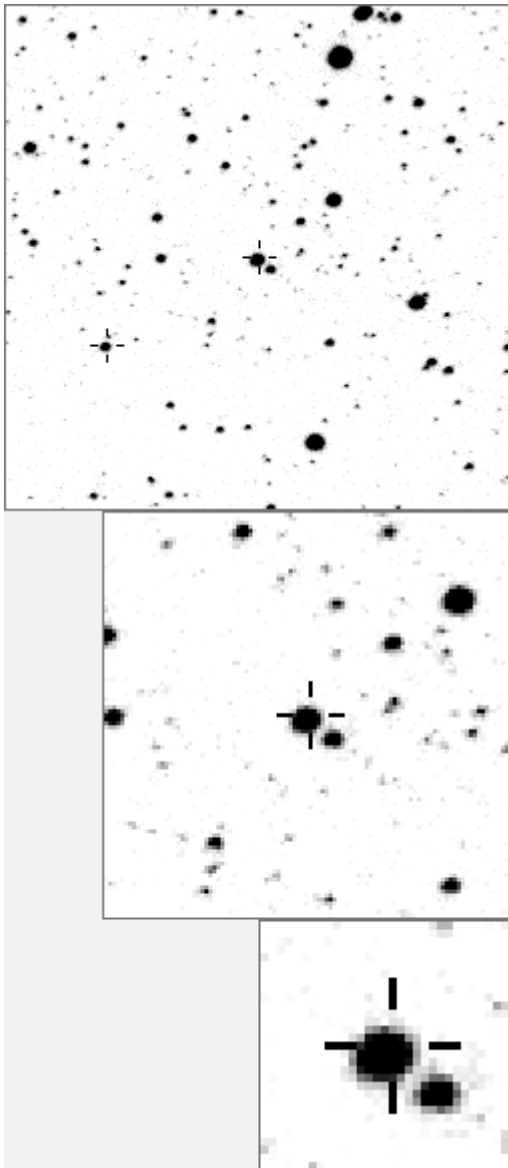


a00927



variables & brighter stars			
.	c g . . .	O 927 v
.	a 171
.	b 384
.	c 442
.	n	d 592
e	e 1737
.	d	f 3332 v
.	k	g 4026
.	j	l	h 4108
.	i 4380
.	j 4566
.	f	k 4697
.	l 4805
.	m 5471
.	n 5486

.	f	h	O 927 v
.	a 592
.	b 4566
.	c 4805
.	i	d 6284
.	e 6508
.	f 7610
.	g 10290
b	O	h 14031
.	i 16358
.	j 22641
.	k 23469
.	l 25582
.	g	m 27577
.	m n	n 29786
.	

Bitmap sizes are 251, 101 and 31 pixels square, South up. The keys to the right refer to the 1st two bitmaps. The numbers in the key are those in my catalogue 'starlistA'. Stars marked with a cross have been found to be variable.

Data and comments on star a00927

SWid: a00927 / **USNO id: 1357 418420 / other id: GSC 3589-4681**

Co-ordinates, x,y in image z1051: 2991.8 963.3

J2000 sky co-ordinates: 21 11 57.86 +45 46 13.53

CMC r'magnitude and 2MASS J,H,K magnitudes: 11.115 6.743 5.716 5.371

USNO B1.0 magnitudes, B1,R1,B2,R2,I2: 14.55 10.64 14.09 10.48 8.31

Misc comments :

irreg osc plus small decline, z period about 36d To 171 magm 11.48 r is 0.25, don't believe that mag.

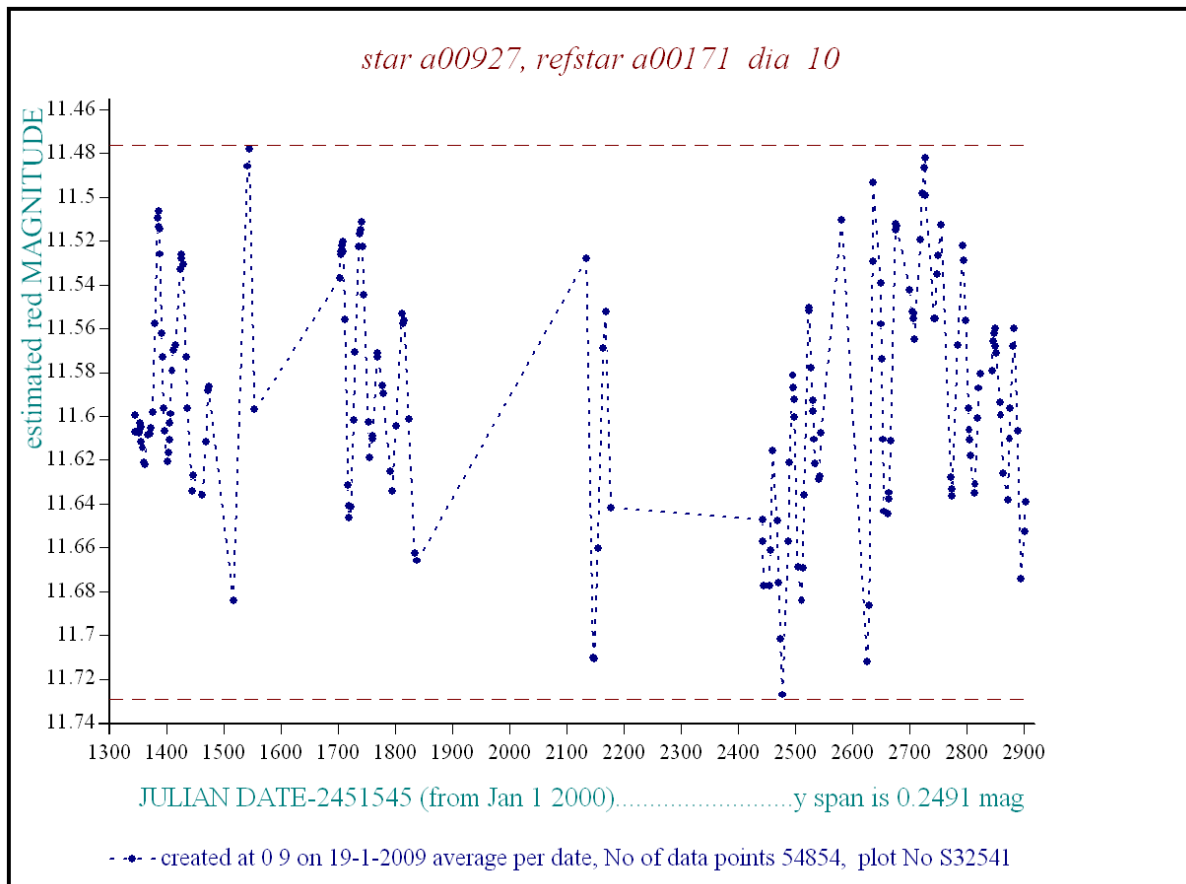
To near 592 it's 10.68, to 384 it's 10.86
Comparison reference star(s) co-ordinates:

a00171: 21 12 4.61 +45 49 49.24
a00384: 21 12 16.01 +45 47 2.84
a00592: 21 12 6.39 +45 45 2.23

Two more years of data available and CMC mags needed

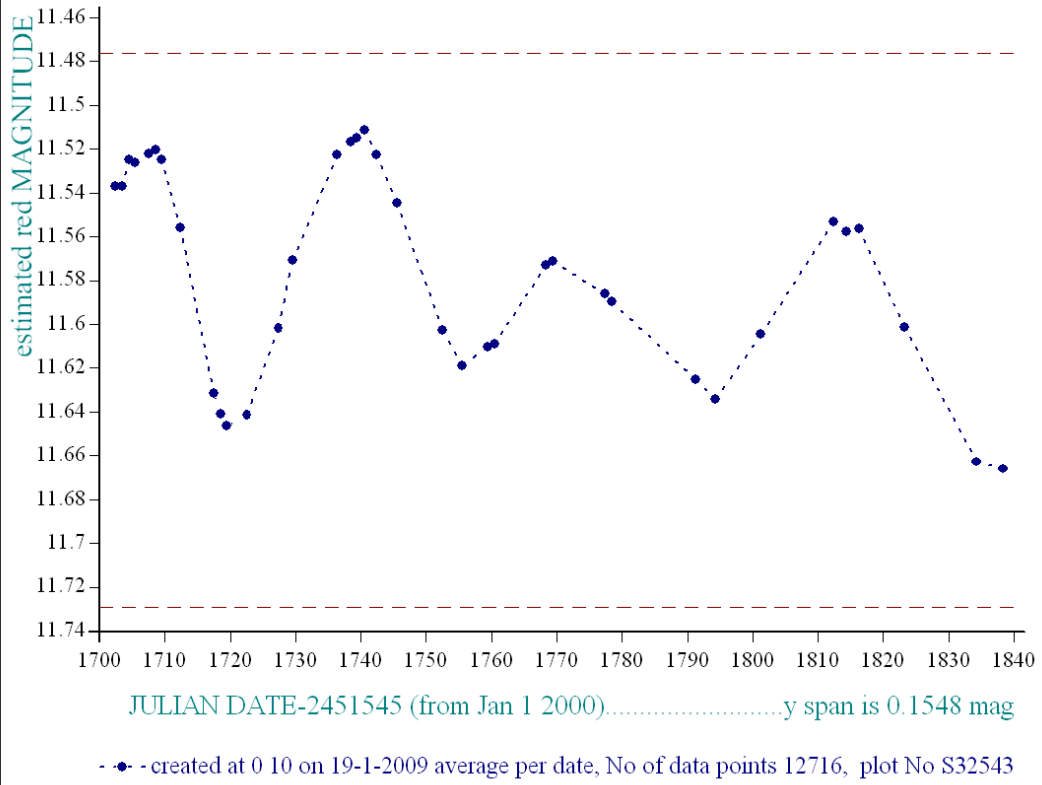
Reminder:

- season 1: dates 1316 to 1553 is 9/8/2003 to 3/4/2004 (a)
- season 2: dates 1696 to 1838 is 23/8/2004 to 12/01/2005 (z)
- season 3: dates 2085 to 2177 is 16/9/2005 to 17/12/2005 (y)
- season 4: dates 2442 to 2755 is 8/9/2006 to 19/7/2007 (w)
- season 5: dates 2772 to 2903 is 4/8/2007 to 13/12/2007 (v)
- season 6: dates 2930 to 3266 is 9/1/2008 to 10/12/2008 (u)
- season 7: dates 3403 to 3539 is 26/4/2009 to 10/9/2009 (t)

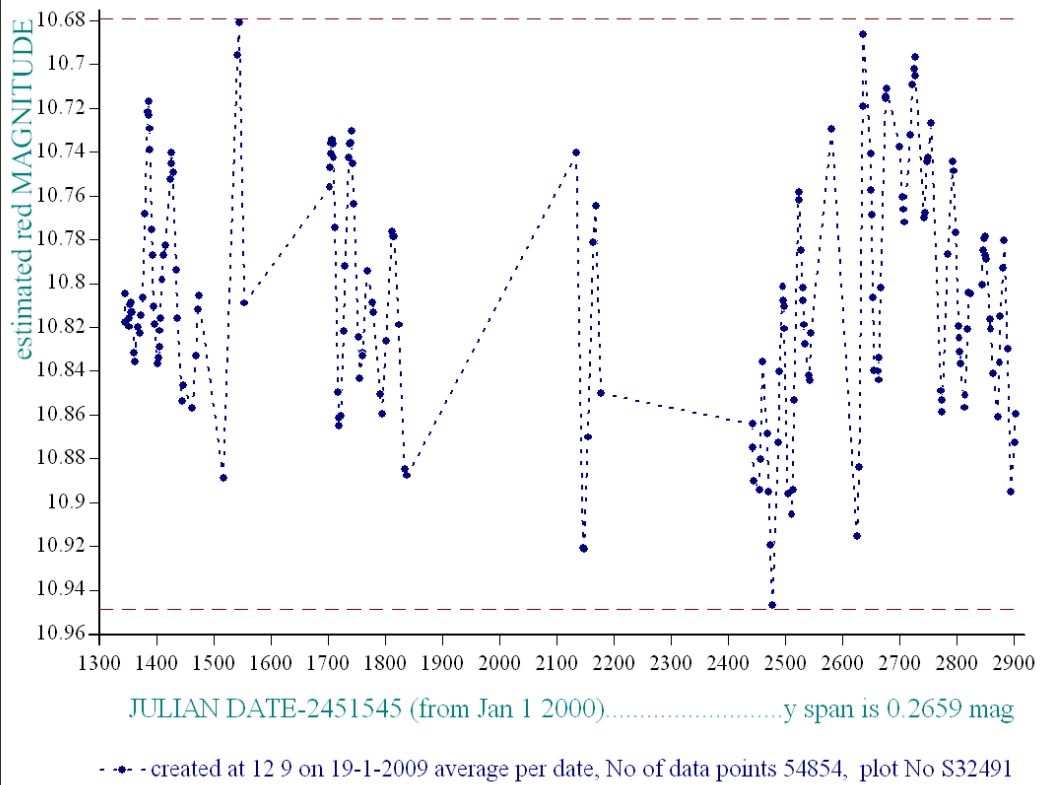


I don't believe the mag here, see below

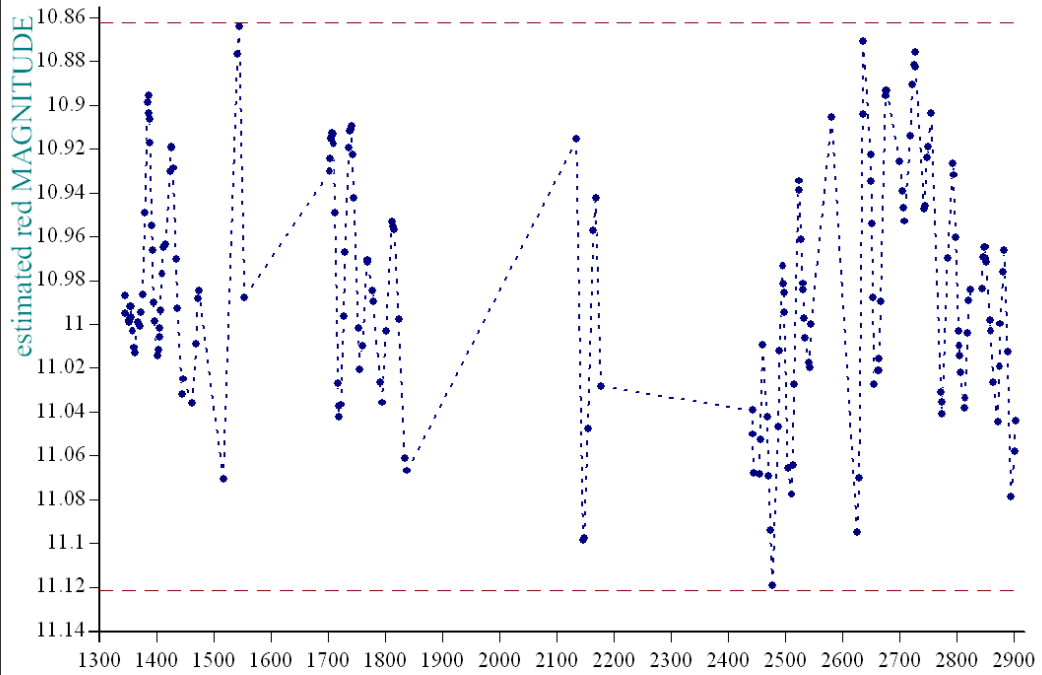
star a00927, refstar a00171 dia 10



star a00927, refstar a00592 dia 10



star a00927, refstar a00384 dia 10



-•- created at 12 11 on 19-1-2009 average per date, No of data points 54854, plot No S32493