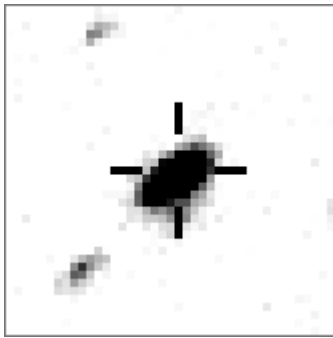


**a00979**



```
variable and brighter stars
. . . . . O 979 v
. . . . . c . . . . . a 22124
. . . . . . . . . . . b 27140
. . . . . . . . . . . c 33045
. . . . .
. . . . .
. . . . . O . . . . .
. . . . . . . . . . .
. . . . . . . . . . . b . . . . .
. . . . . . . . . . .
. . . . . . . . . . .
. . . . . a . . . . .
. . . . . . . . . . .
. . . . . . . . . . .
```

Bitmap size is 31 pixels square, South up. The numbers in the key are those in my catalogue 'starlistA'. Stars marked with a cross have been found to be variable.

The bitmap is offset because this star is very close to the image edge.

**Data and comments on star a00979**

SWid: a00979 / **USNO id: 1373 474982 / other id: GSC 0359206876**

Co-ordinates, x,y in image z1051: 42.3 3436.4

**J2000 sky co-ordinates: 21 0 34.56 +47 23 3.3**

CMC r'magnitude and 2MASS J,H,K magnitudes: 11.122 6.361 5.345 4.885

USNO B1.0 magnitudes, B1,R1,B2,R2,I2: 14.77 10.64 14.09 10.61 8.69

Misc comments :

Red osc, p about 25d, to 437 magm 10.62 magr 0.18

Comparison reference star(s) co-ordinates:

**a00437: 21 0 35.24 +47 15 33.14**

colour temp estimate: 4349 K

Reminder: **All dates, JD and HJD are from Jan 1<sup>st</sup> 2000**

- season 1: dates 1316 to 1553 is 9/8/2003 to 3/4/2004      **(a)**
- season 2: dates 1696 to 1838 is 23/8/2004 to 12/01/2005      **(z)**
- season 3: dates 2085 to 2177 is 16/9/2005 to 17/12/2005      **(y)**
- season 4: dates 2442 to 2755 is 8/9/2006 to 19/7/2007      **(w)**
- season 5: dates 2772 to 2903 is 4/8/2007 to 13/12/2007      **(v)**
- season 6: dates 2930 to 3266 is 9/1/2008 to 10/12/2008      **(u)**
- season 7: dates 3403 to 3539 is 26/4/2009 to 10/9/2009      **(t)**

