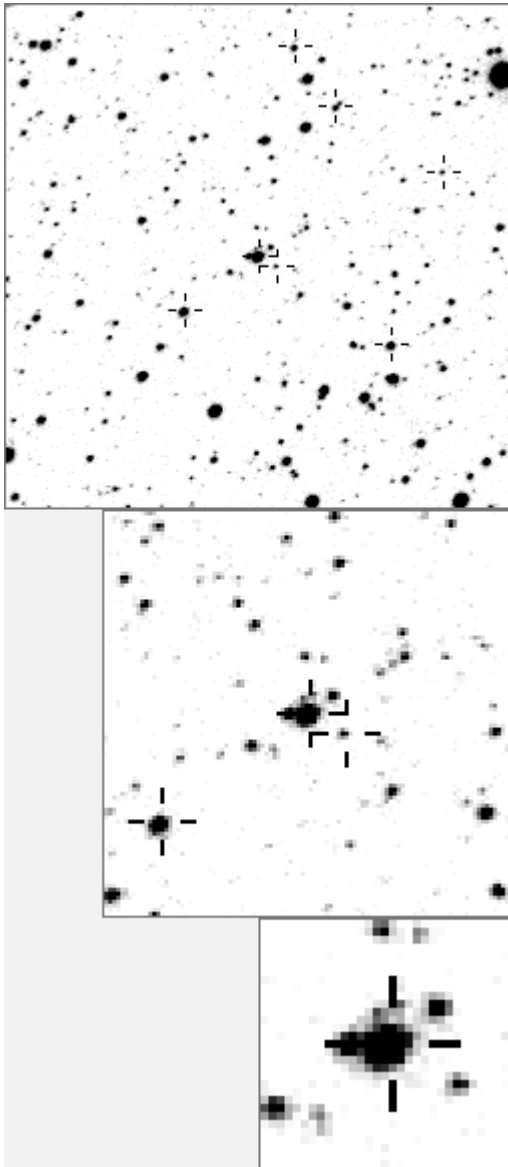


a01147



variables & brighter stars			
.	.	O	1147 v
.	f	.	a 254
.	.	.	b 561
.	.	.	c 568
.	.	.	d 1594
.	.	.	e 1604
.	.	.	f 1705
.	.	.	g 1828
.	.	.	h 1846
.	.	.	i 3086 v
.	.	.	j 3737 v
.	.	.	k 9980 v
.	.	.	l 10145 v
.	.	.	m 18753 v
.	.	.	n 20658 v

.	.	O	1147 v
.	.	.	a 3086 v
m	.	.	b 6438
.	.	.	c 7128
.	.	.	d 7304
.	.	.	e 10181
.	.	.	f 12669
.	.	.	g 13947
.	.	.	h 14087
.	.	.	i 14678
.	.	.	j 15602
.	.	.	k 16061
.	.	.	l 18040
.	.	.	m 18646
c	.	.	n 20658 v

Bitmap sizes are 251, 101 and 31 pixels square, South up. The keys to the right refer to the 1st two bitmaps. The numbers in the key are those in my catalogue 'starlistA'. Stars marked with a cross have been found to be variable.

Data and comments on star a01147

SWid: a01147 / **USNO id: 1370 458490 / other id: 1370-0458090**

Co-ordinates, x,y in image z1051: 1209.8 2857.5

J2000 sky co-ordinates: 21 5 7.1 +47 1 20.46

CMC r'magnitude and 2MASS J,H,K magnitudes: 0 0 0 0

USNO B1.0 magnitudes, B1,R1,B2,R2,I2: 10.62 9.54 10.92 10.02 9.96

Misc comments :

Dips near or on 1409 1722 1823 2456 2663 2675, a noisy eb to ref 90, much better to 561 period is 12.17538

To 561 magm 11.06 magr 0.138

Comparison reference star(s) co-ordinates:

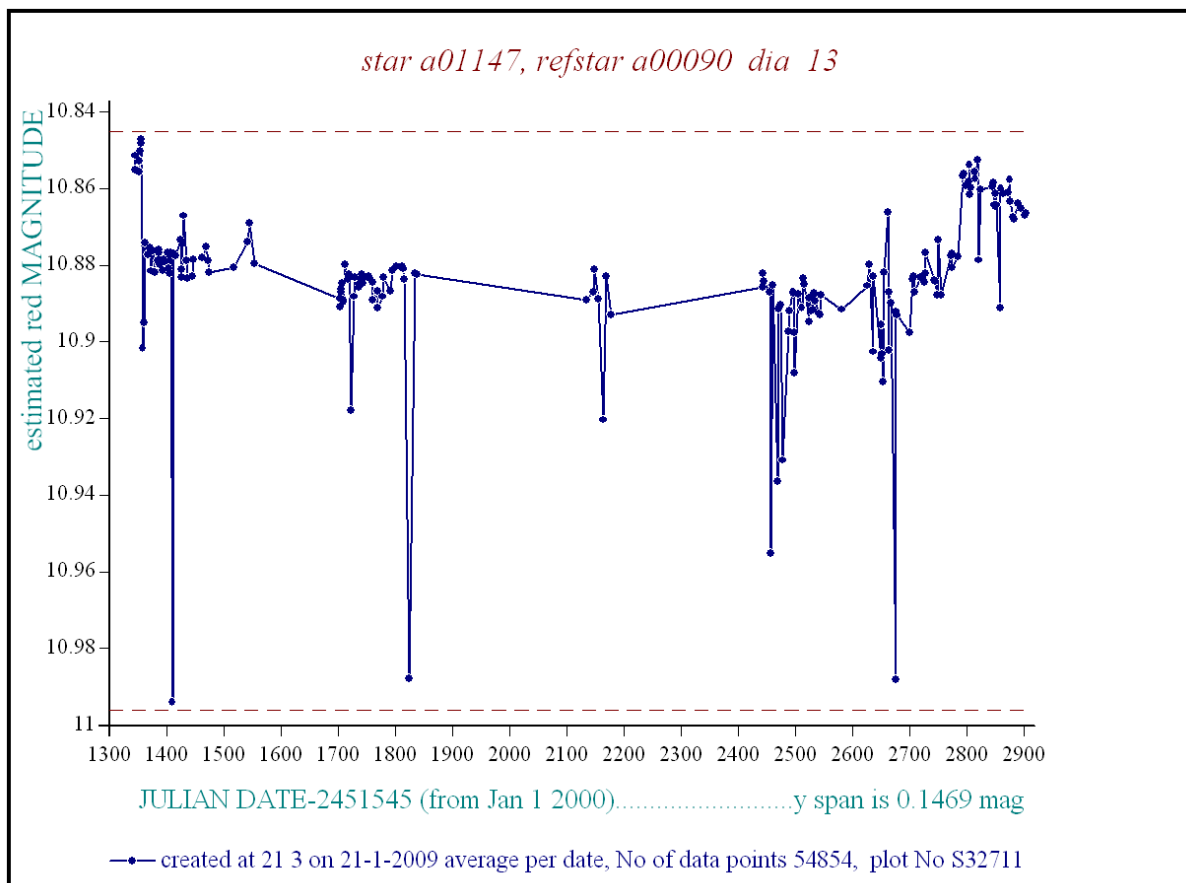
a00090: 21 5 47.33 +46 59 46.66

a00561: 21 5 1.94 +47 4 22.67

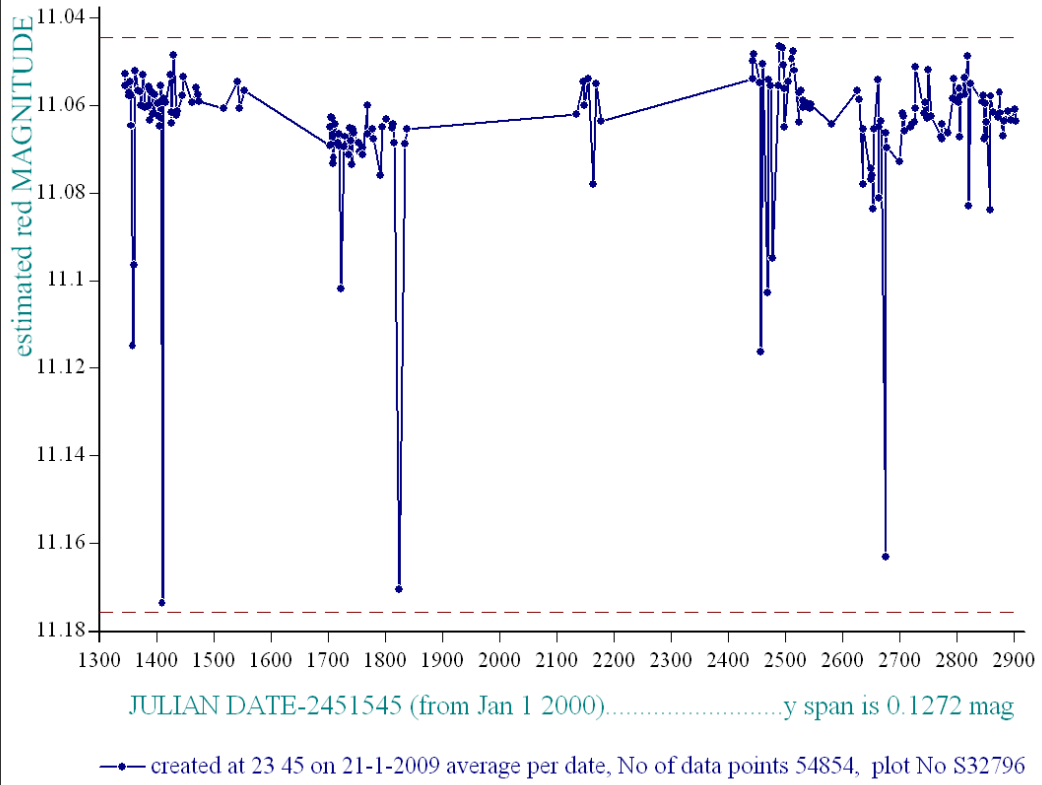
This star is complex in my images and I need to cross-check variability with a set of collection circles, to see which bit is variable. There is a very weak eclipsing star, a20658, (period 4.15d) just 23 arc-sec away

Reminder:

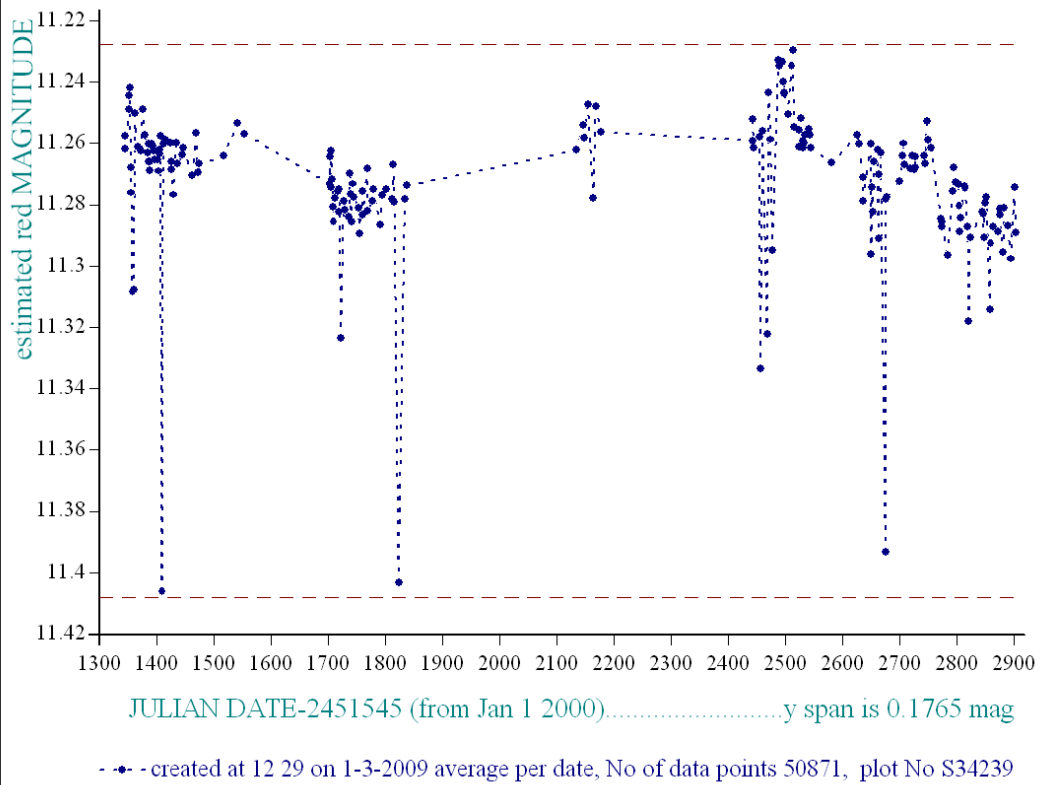
- season 1: dates 1316 to 1553 is 9/8/2003 to 3/4/2004 **(a)**
- season 2: dates 1696 to 1838 is 23/8/2004 to 12/01/2005 **(z)**
- season 3: dates 2085 to 2177 is 16/9/2005 to 17/12/2005 **(y)**
- season 4: dates 2442 to 2755 is 8/9/2006 to 19/7/2307 **(w)**
- season 5: dates 2772 to 2903 is 4/8/2007 to 13/12/2007 **(v)**
- season 6: dates 2930 to 3266 is 9/1/2008 to 10/12/2008 **(u)**
- season 7: dates 3403 to 3539 is 26/4/2009 to 10/9/2009 **(t)**

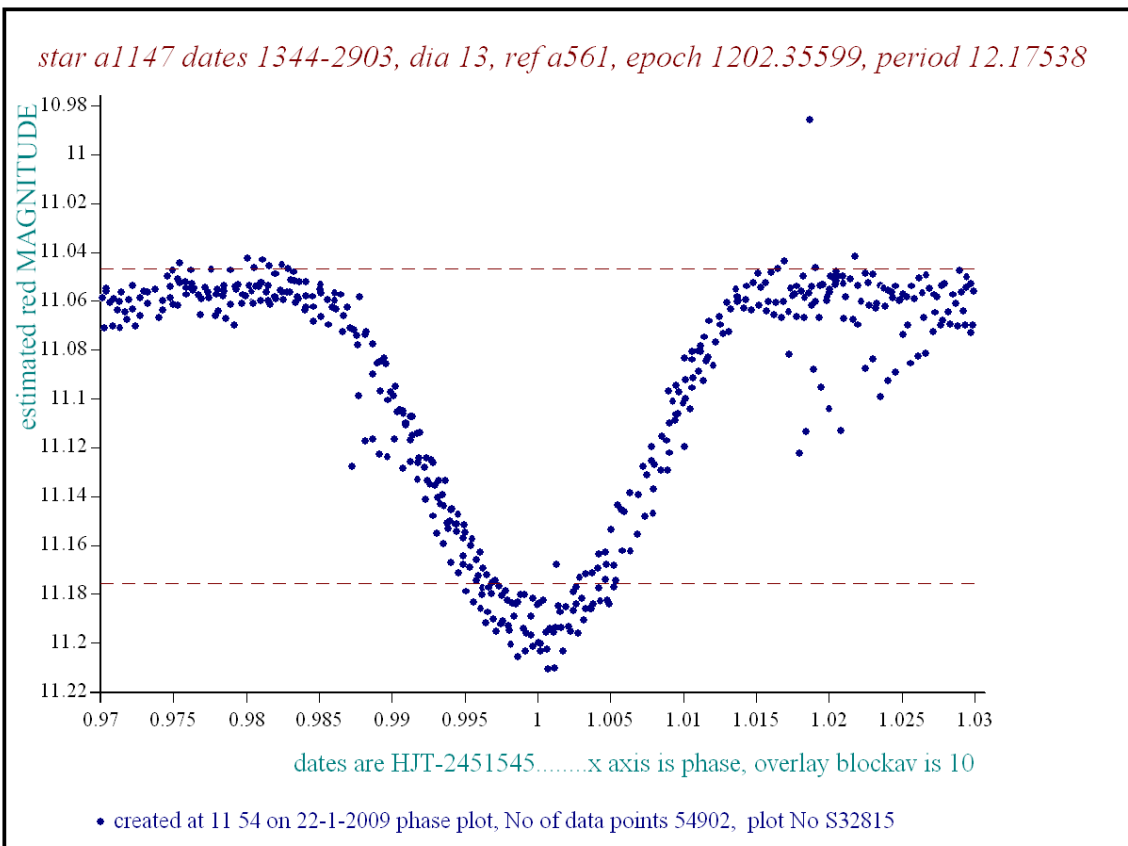
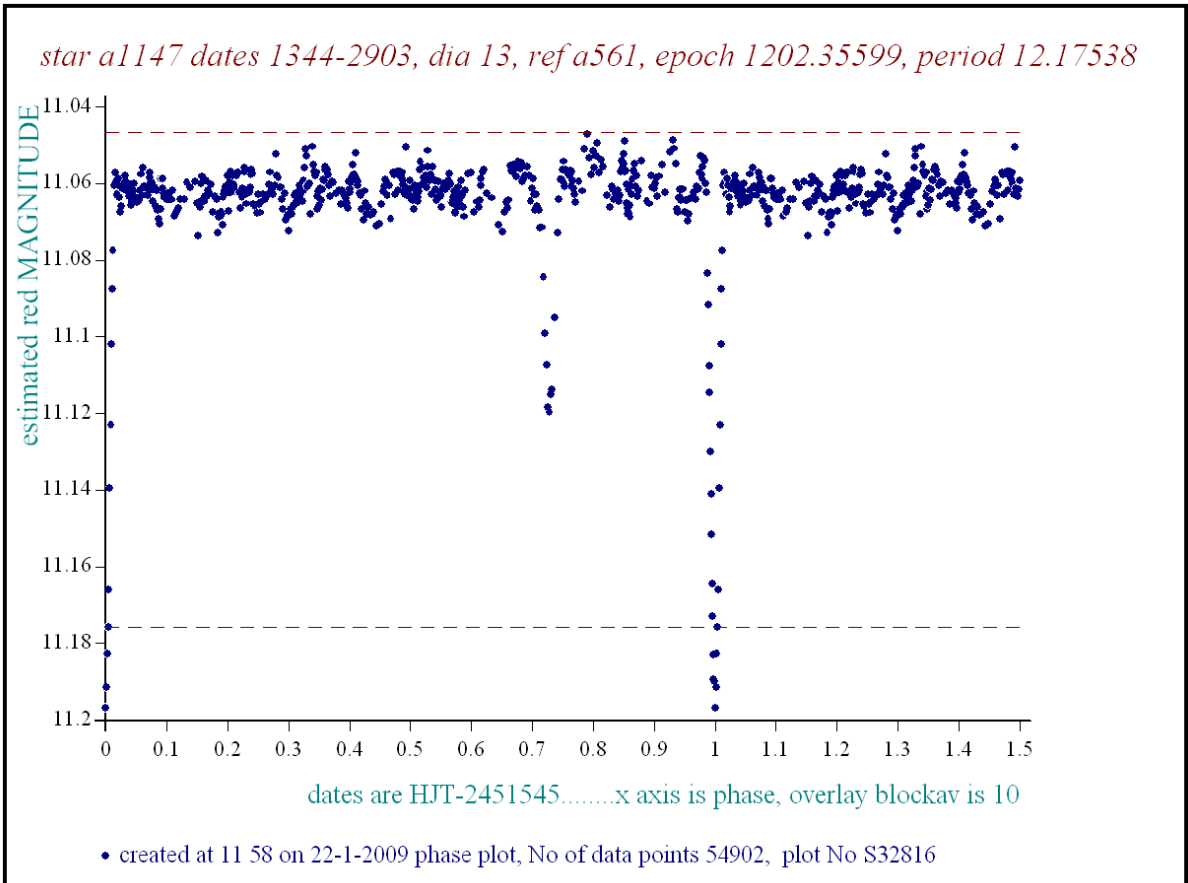


star a01147, refstar a00561 dia 13

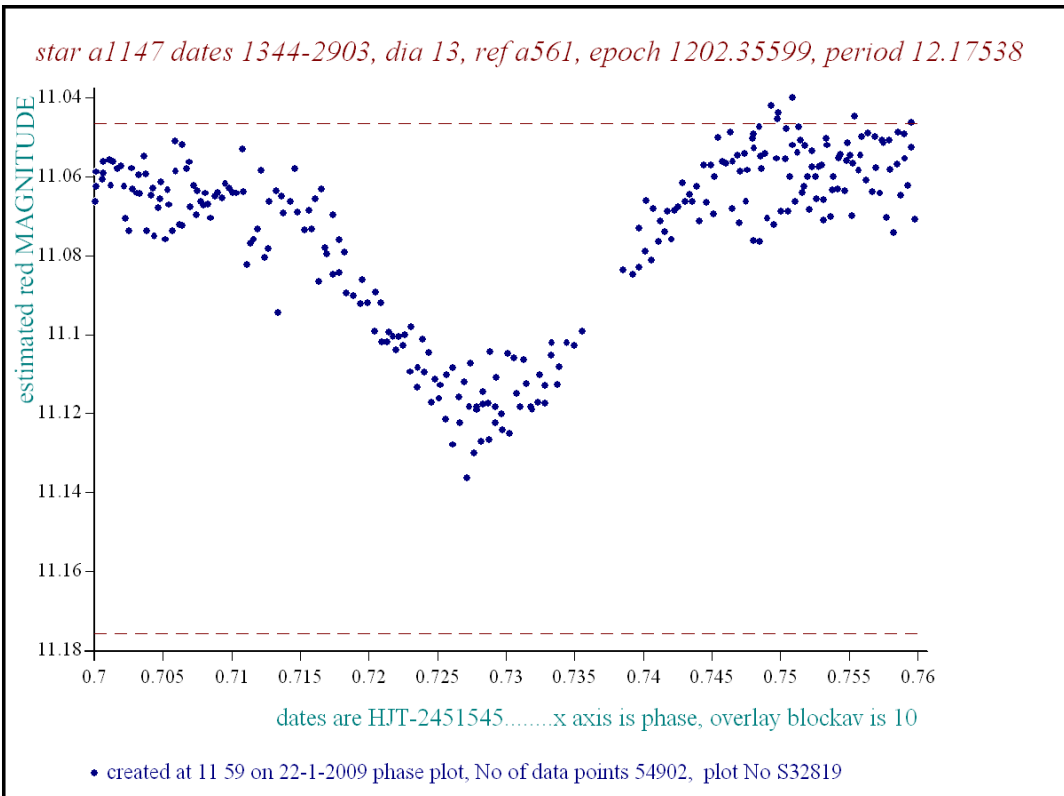
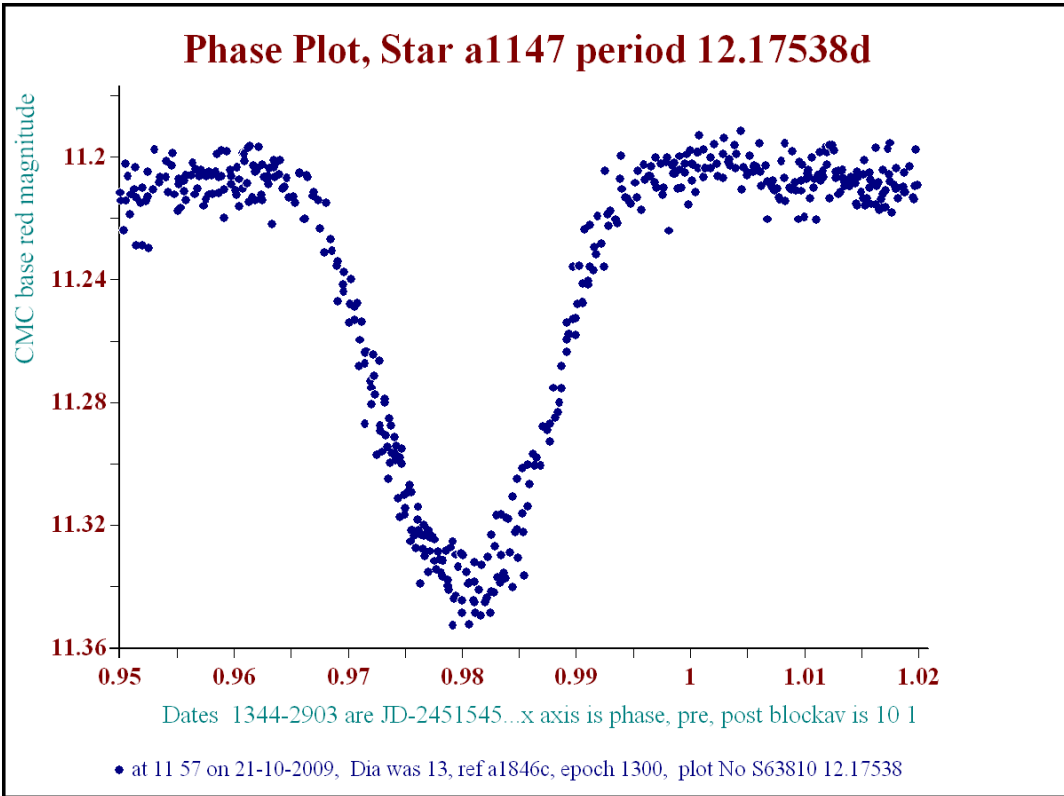


star a01147, refstar a00561 dia 33





11.056 to 11.194, 0.138mag, w1/2 is 2 .9917 to 1.0082, 0.0165 or 0.2009d



11.062-11.118, .056mag, w1/2 is 0.7194 to 0.7374 or 0.018p or 0.219days, phi 2 is 0.7284