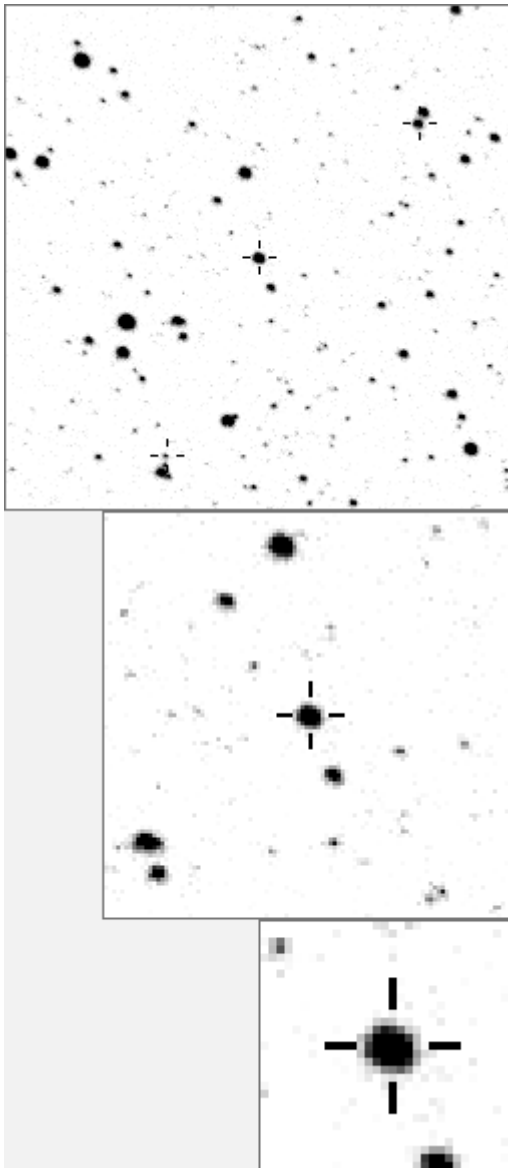


a02521



variables & brighter stars				
.....	O	2521	v
.. b	a	366	
.....	b	753	
..... m	c	1137	
h e	g	d	1677	
.....	e	1797	
.....	f	1983	
..... O	g	2152	
.....	h	2158	v
.. a k	i	4091	
.. f	j	4324	
..... l	k	4336	
..... d	l	4576	
..... n	c	m	5128 v
.....	n	19379	v

..... m	O	2521	v
..... a	a	2152	
.....	b	4336	
..... e	c	7792	
.....	d	8669	
..... l	e	10226	
.....	f	23645	
..... O	g	25065	
..... g k	h	26193	
..... c	i	27028	
.....	j	27493	
.....	k	30978	
.. b n h	l	33176	
.. d	m	36416	
..... j	n	41638	

Bitmap sizes are 251, 101 and 31 pixels square, South up. The keys to the right refer to the 1st two bitmaps. The numbers in the key are those in my catalogue 'starlistA'. Stars marked with a cross have been found to be variable.

Data and comments on star a02502

SWid: a02502 / **USNO id: 3592 406401 / other id:**

Co-ordinates, x,y in image z1051: 1342.2 3582.2

J2000 sky co-ordinates: 21 5 36.57 +47 30 1.62

CMC r'magnitude and 2MASS J,H,K magnitudes: 11.978 10.864 10.566 10.519

USNO B1.0 magnitudes, B1,R1,B2,R2,I2: 12.87 11.55 12.41 11.5 11.13

Misc comments :

jl09 again not sure of period, either 0.8951d or 8.66d

Looks like irreg osc, Kathy. Period in a 20d, in v 30 and 16 perhaps or is it a short period, don't know.

magm to 342 is 11.4. magr is 0.13 and f don't know-

MORE STUDY 10 in magdata says I'm not sure.

Comparison reference star(s) co-ordinates:

a01994: 21 6 1.82 +47 28 40.16

Reminder:

All dates, JD and HJD are from Jan 1st 2000

season 1: dates 1316 to 1553 is 9/8/2003 to 3/4/2004 (a)

season 2: dates 1696 to 1838 is 23/8/2004 to 12/01/2005 (z)

season 3: dates 2085 to 2177 is 16/9/2005 to 17/12/2005 (y)

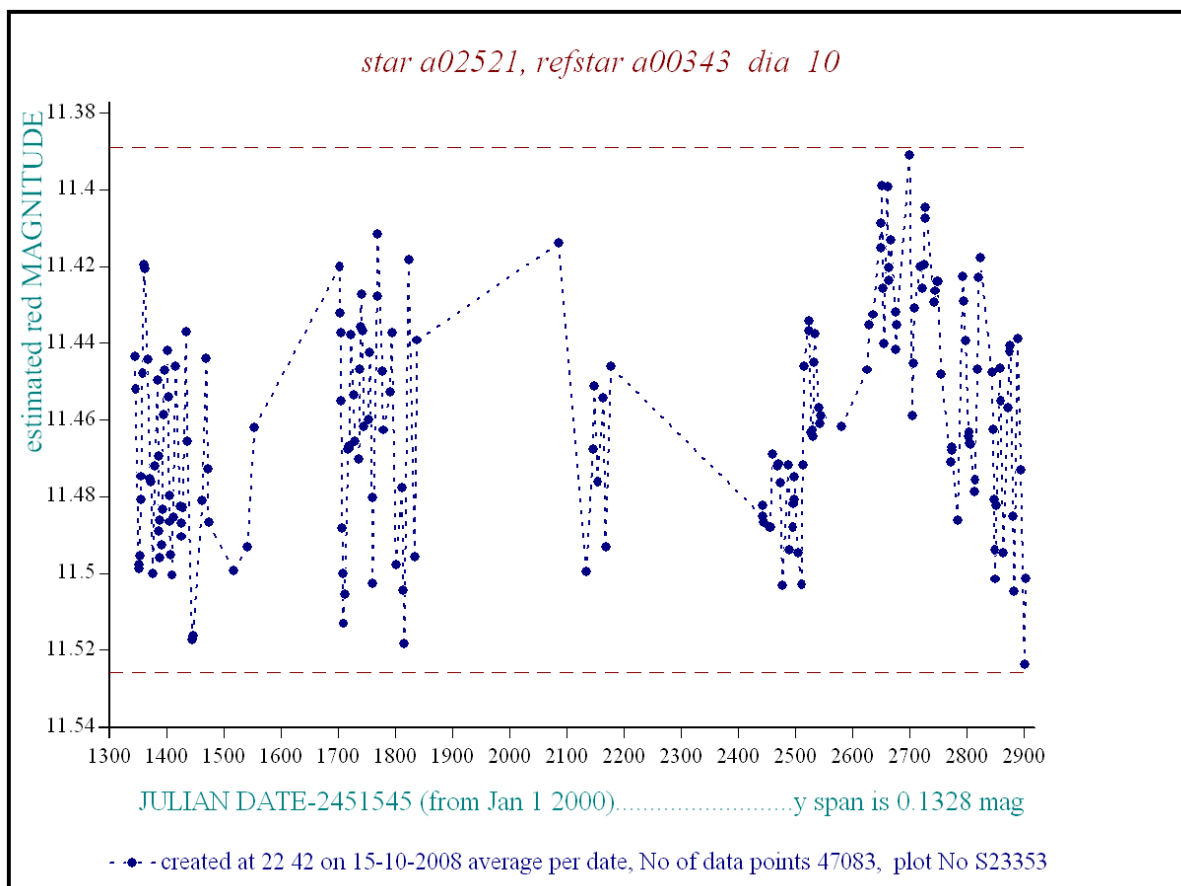
season 4: dates 2442 to 2755 is 8/9/2006 to 19/7/2007 (w)

season 5: dates 2772 to 2903 is 4/8/2007 to 13/12/2007 (v)

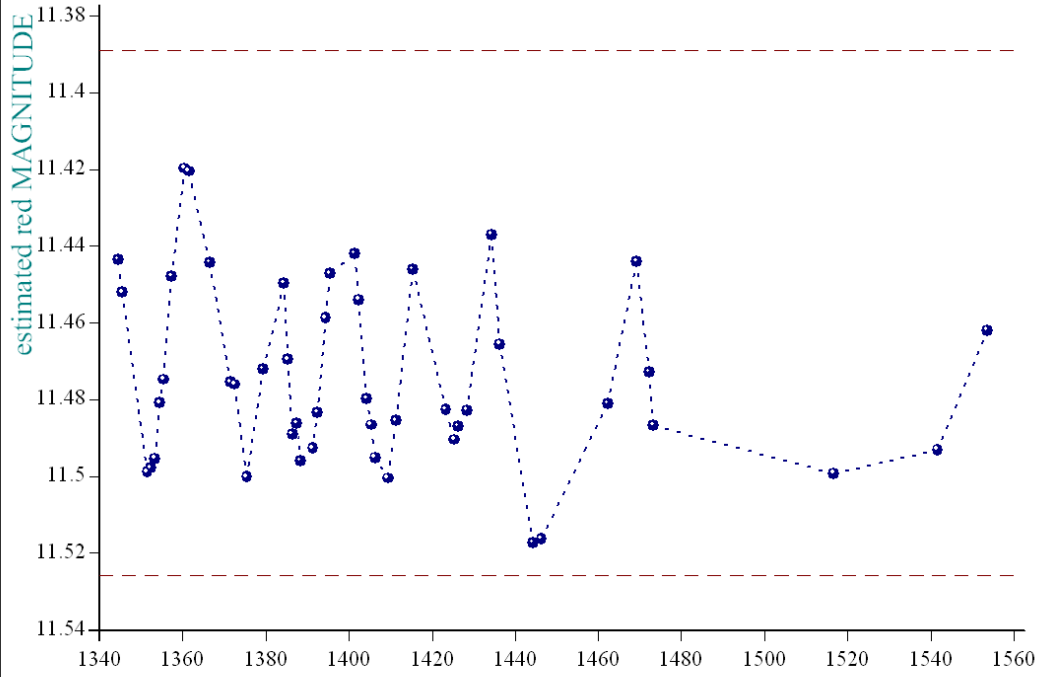
season 6: dates 2930 to 3266 is 9/1/2008 to 10/12/2008 (u)

season 7: dates 3403 to 3539 is 26/4/2009 to 10/9/2009 (t)

More checks needed, CMC mags

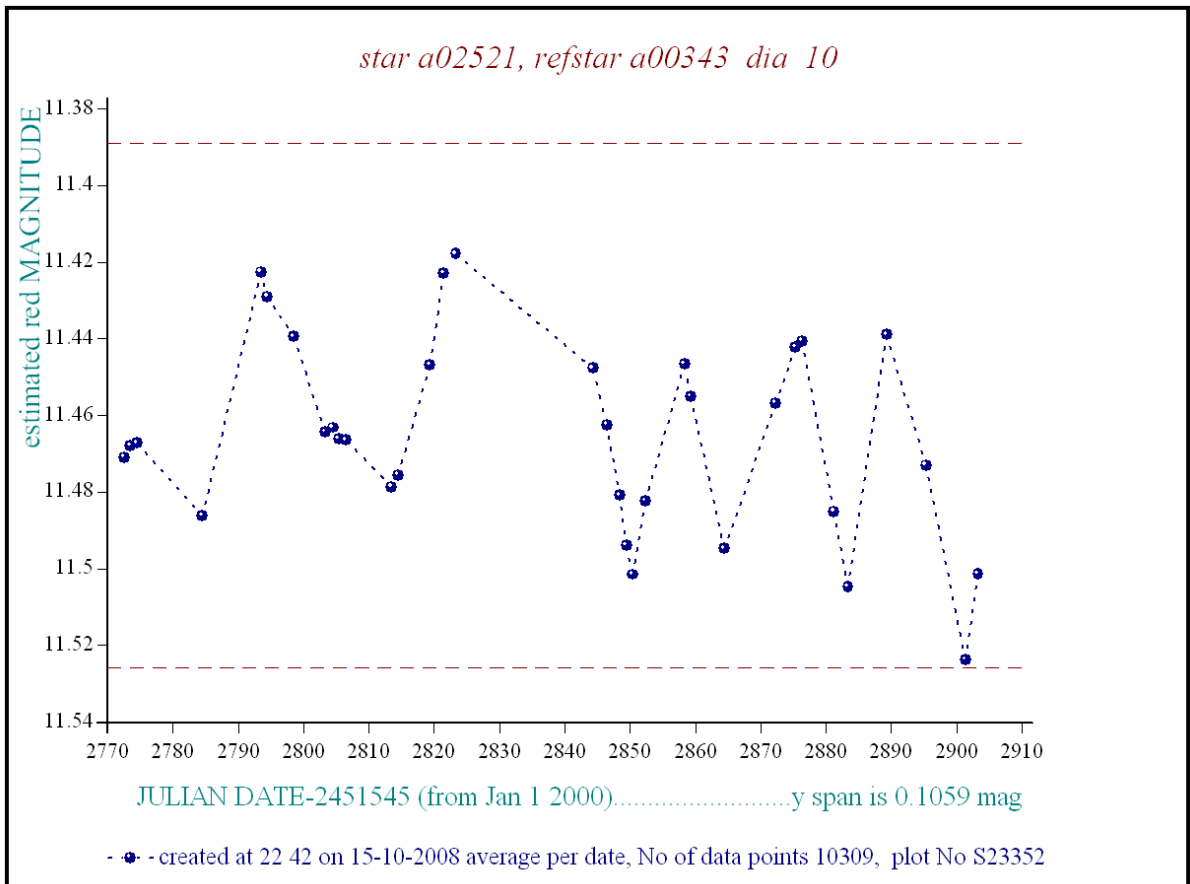
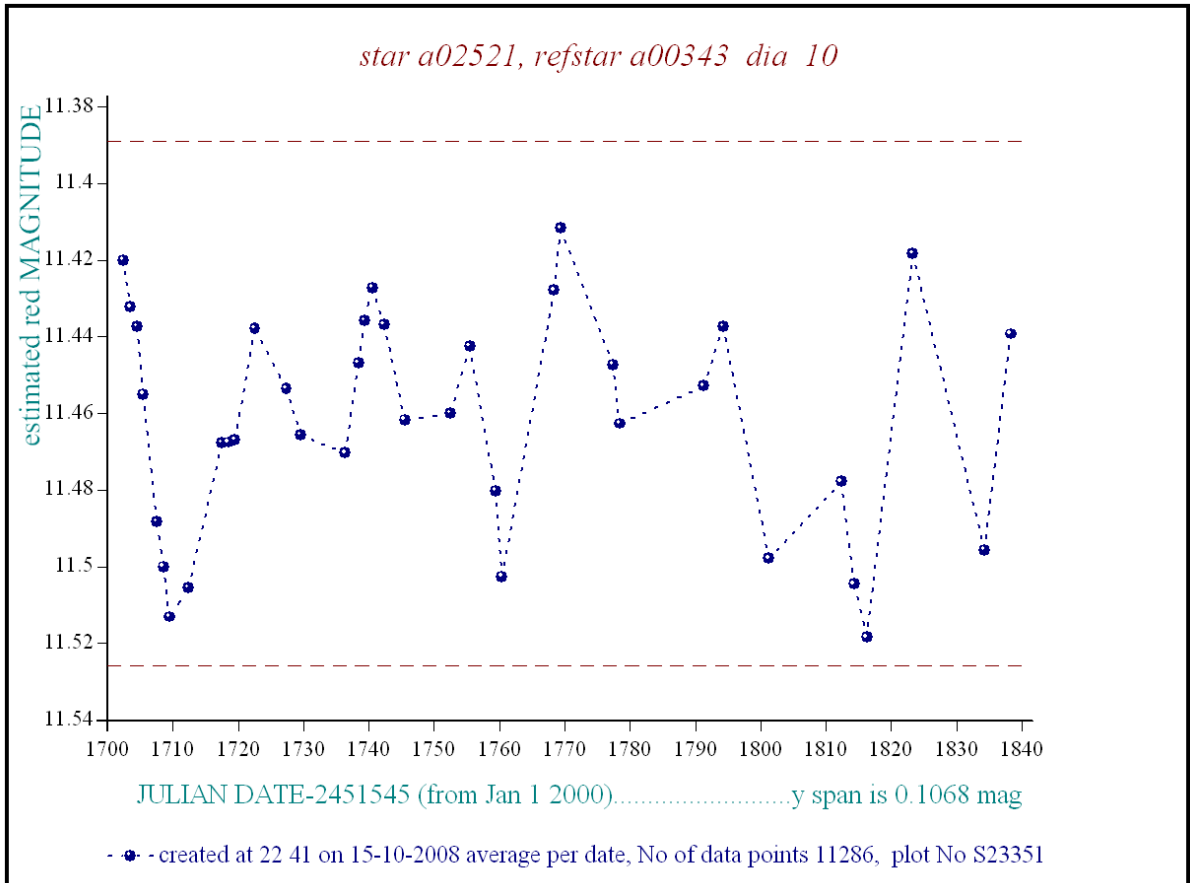


star a02521, refstar a00343 dia 10



JULIAN DATE-2451545 (from Jan 1 2000).....y span is 0.0977 mag

- ● - created at 22 41 on 15-10-2008 average per date, No of data points 8591, plot No S23350



I'm not sure about this one. Is it 16/20 period of 0.946? The movements in 1354, 1361 and 1375 could agree with the phase plot below. It's moving the right amount to be real.

