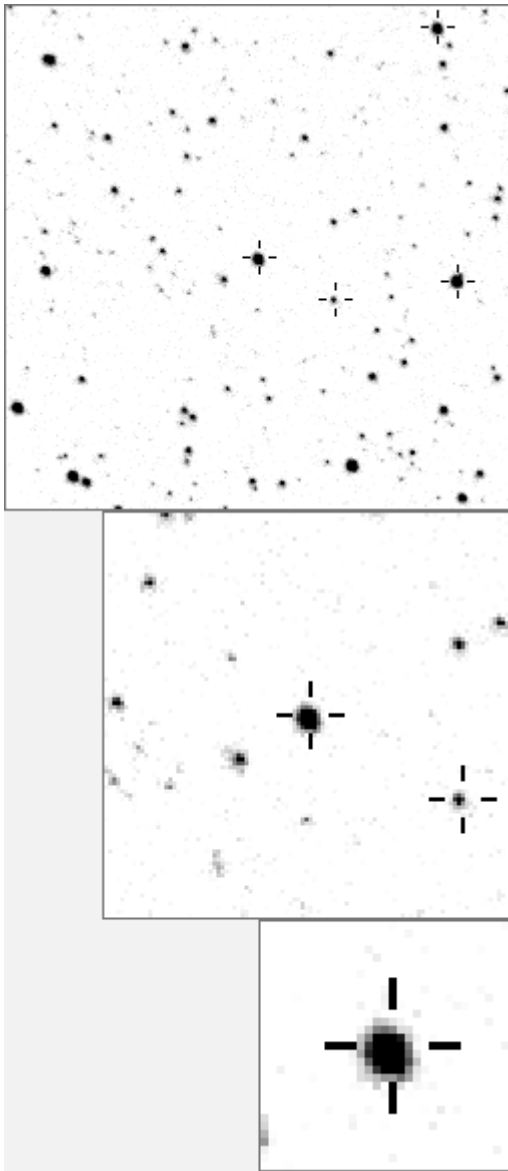


a02808



variable and brighter stars					
.	.	.	e . .	O 2808 v	
.	f	.	.	a 1768	
.	.	.	.	b 2076 v	
.	.	.	l .	c 2539	
.	.	.	.	d 2744	
.	.	.	.	e 3080 v	
.	.	.	.	f 3560	
.	g	.	O	g 5003	
.	.	.	n	h 5365	
.	.	.	.	i 6219	
.	.	.	.	j 6565	
c	.	.	k	k 8968	
.	.	.	.	l 10706	
.	.	.	a	m 10881	
.	i	.	.	h	n 15183 v
-----				- -	
.	.	.	.	O 2808 v	
.	.	.	.	a 14388	
.	f	.	.	b 15183 v	
.	.	.	.	c 15798	
.	.	.	c e	d 17174	
.	.	l	.	e 22219	
d	.	.	.	f 22241	
.	n	.	O	g 29344	
.	m	.	.	h 34660	
g	.	a	.	i 35584	
.	i	.	.	b	j 36179
.	.	.	j	k 38230	
.	.	k	.	l 41010	
.	.	h	.	m 41976	
.	.	.	.	n 49700	

Bitmap sizes are 251, 101 and 31 pixels square, South up. The keys to the right refer to the 1st two bitmaps. The numbers in the key are those in my catalogue 'starlistA'. Stars marked with a cross have been found to be variable.

Data and comments on star a02808

SWid: a02808 / **USNO id: 1353 416388 / other id:**

Co-ordinates, x,y in image z1051: 1471.9 379.1

J2000 sky co-ordinates: 21 6 13.16 +45 23 8.8

CMC r'magnitude and 2MASS J,H,K magnitudes: 12.212 7.648 6.604 6.244

USNO B1.0 magnitudes, B1,R1,B2,R2,I2: 15.67 11.44 14.94 11.42 9.86

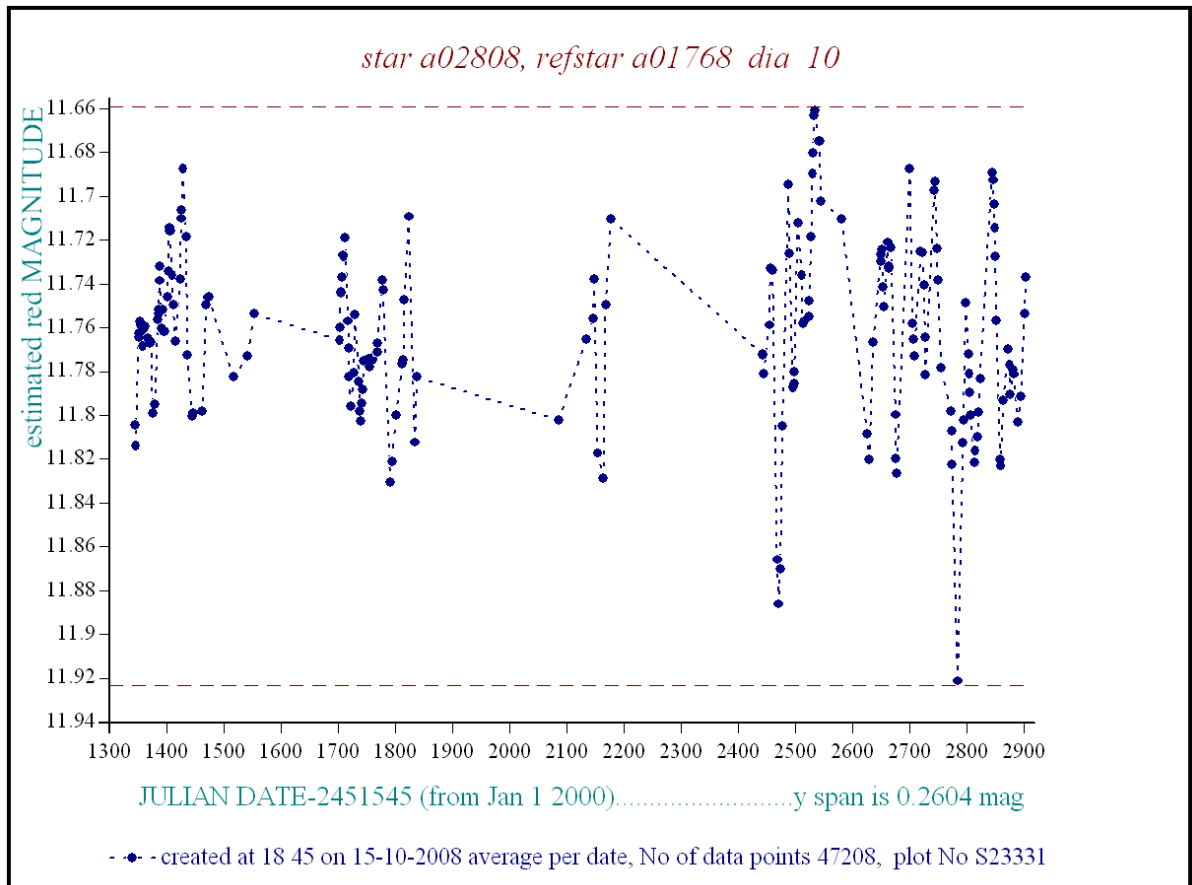
Misc comments :

An interesting one dominated by three dips spaced 310 and 316 days apart

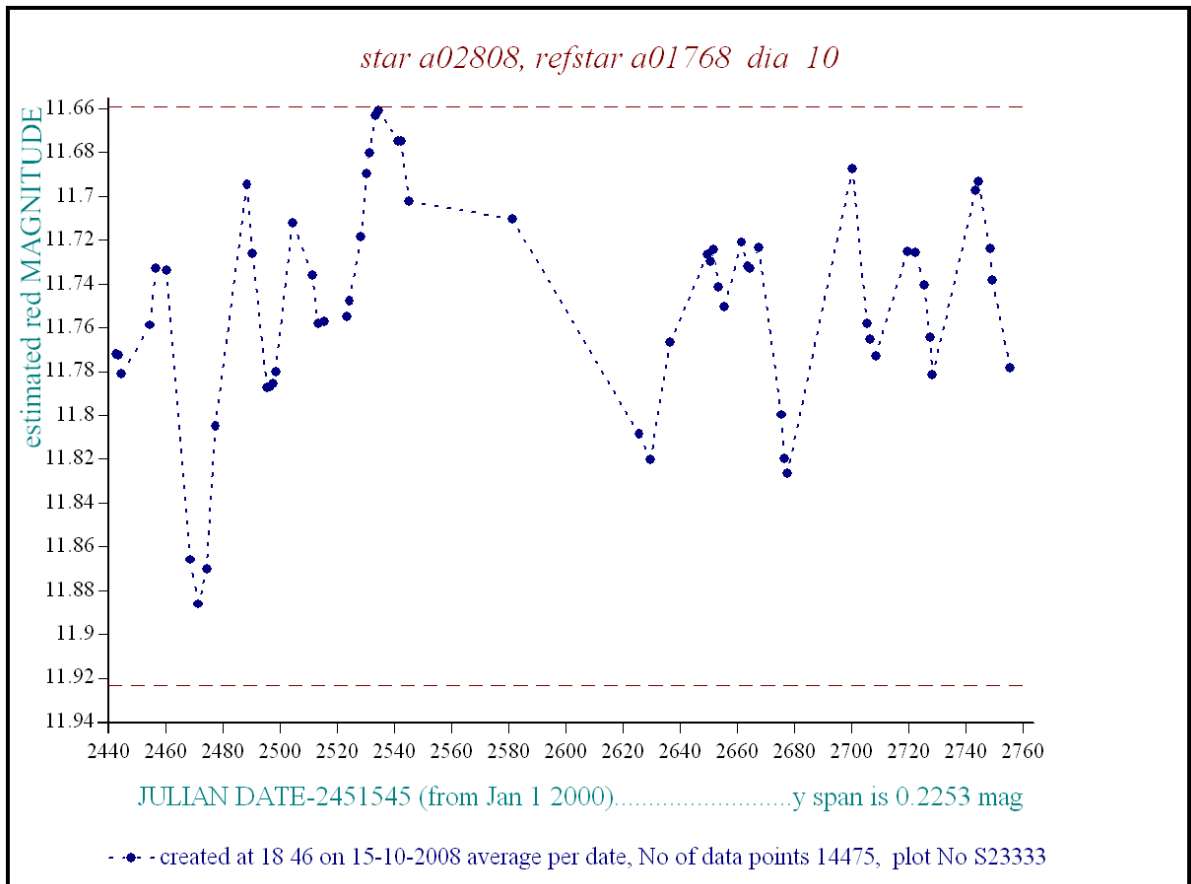
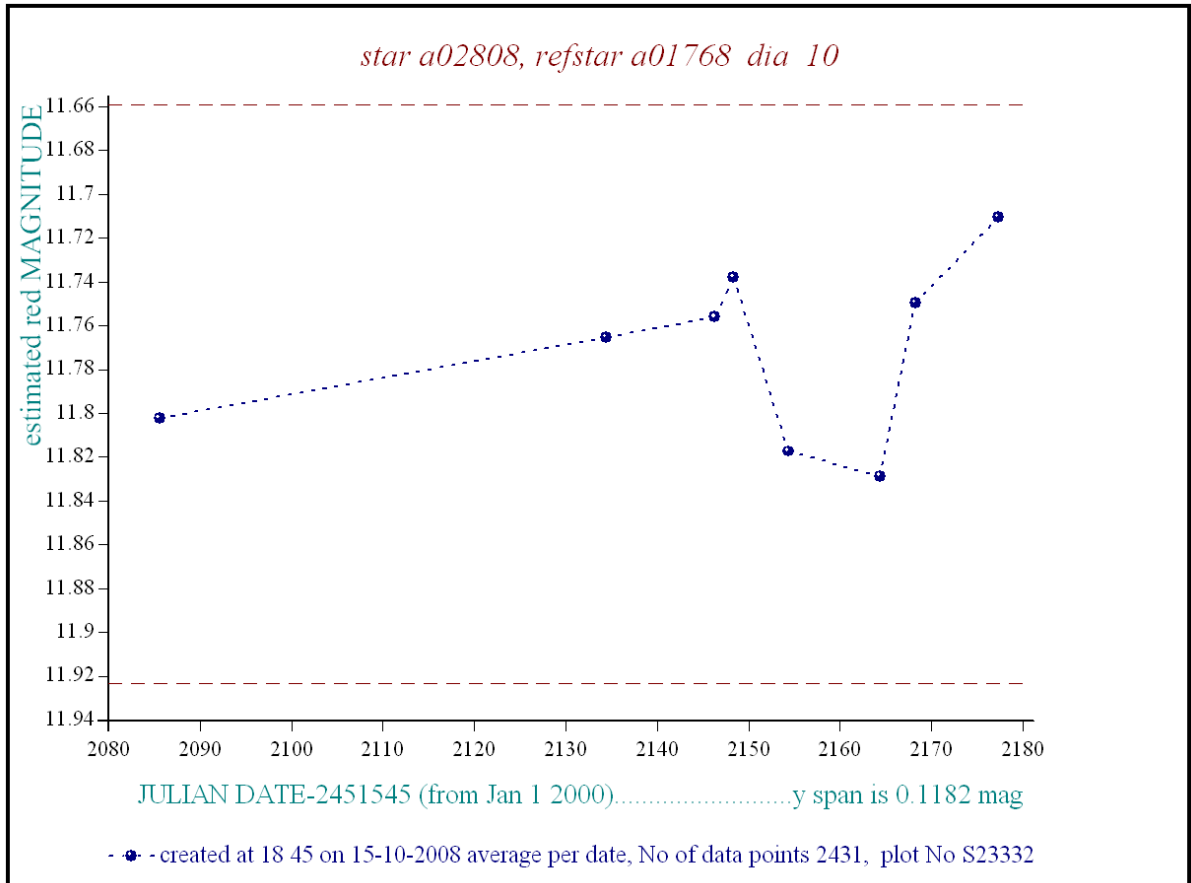
Checked with refs 518, 427 same, 518 prob best ref

Comparison reference star(s) co-ordinates:

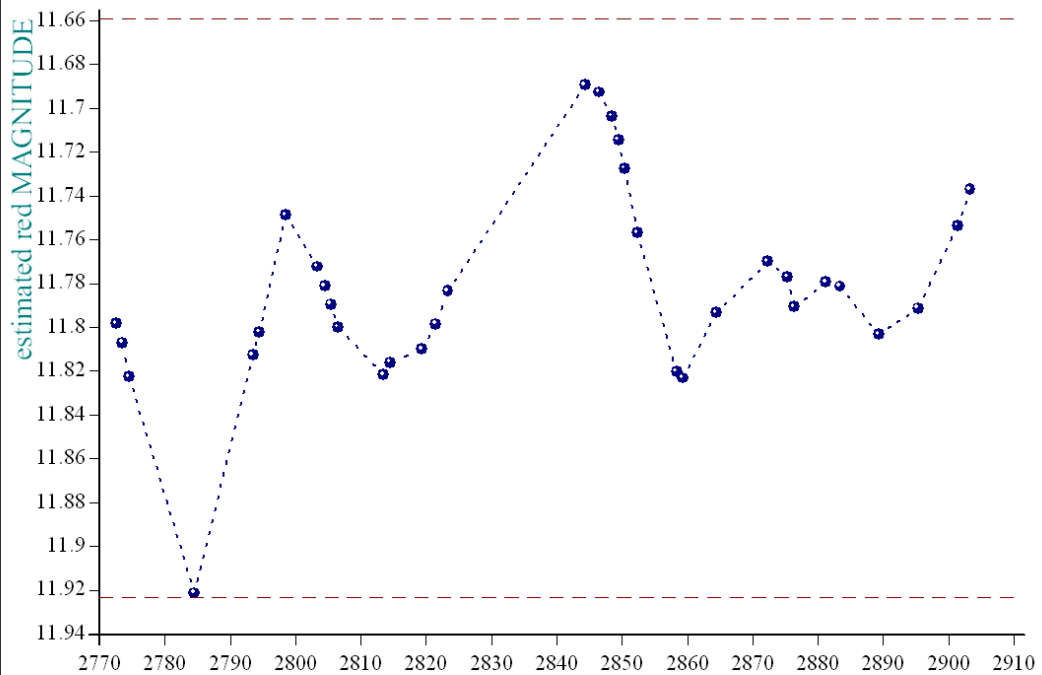
a01768: 21 6 23.51 +45 27 13.28



The three most obvious dips are at 2158 2471 and 2783, spacings of 313 and 312 days. The spacings of the other movements do not appear to be so regular.



star a02808, refstar a01768 dia 10



JULIAN DATE-2451545 (from Jan 1 2000).....y span is 0.2319 mag

- ● - created at 18 48 on 15-10-2008 average per date, No of data points 10374, plot No S23334