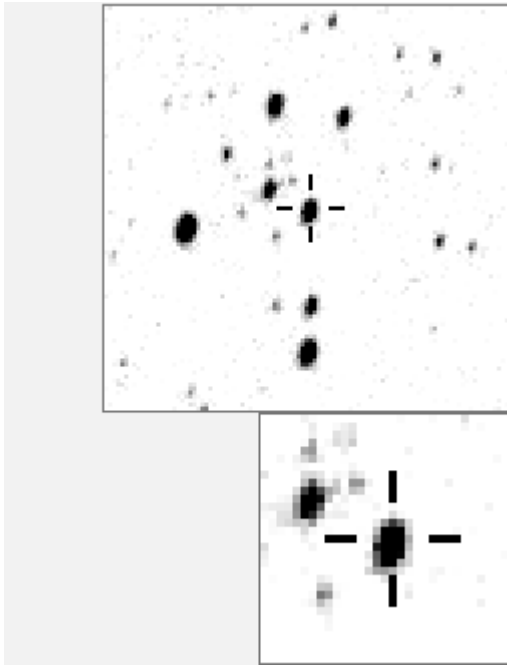


a03710



.....j.....	O	3710	v
.....n.i..	a	1524	
.....	b	2437	
.....c.....	c	3939	
.....d.....	d	7311	
.....g.....l..	e	7519	
.....e.....	f	8525	
.....O.....	g	19085	
.....a.....h.k.	h	19968	
.....	i	24500	
.....	j	24692	
.....m.f.....	k	31233	
.....b.....	l	31820	
.....	m	32252	
.....	n	33722	

Bitmap sizes are 101 and 31 pixels square, South up. The keys to the right refers to the top bitmap. The numbers in the key are those in my catalogue 'starlistA'. Stars marked with a cross have been found to be variable.

Data and comments on star a03710

SWid: a03710 / **USNO id: 1377 495428 / other id: GSC 3592-2412**

Co-ordinates, x,y in image z1051: 1738.2 4008.2

J2000 sky co-ordinates: 21 7 9.01 +47 46 54.3

CMC r'magnitude and 2MASS J,H,K magnitudes: 12.417 10.142 9.466 9.281

USNO B1.0 magnitudes, B1,R1,B2,R2,I2: 14 11.4 14.21 11.83 11.06

Misc comments :

Well defined slow variable, Magm to 3939 mag 12.35, range 0.25, period 50-55d
J-K, 0.86

A distinct kink after two maxima in 2003/4 and one definite and two likely in 2004/5

Comparison reference star(s) co-ordinates:

a03939: 21 7 7.01 +47 45 52.16

Reminder:

All dates, JD and HJD are from Jan 1st 2000

season 1: dates 1316 to 1553 is 9/8/2003 to 3/4/2004 (a)

season 2: dates 1696 to 1838 is 23/8/2004 to 12/01/2005 (z)

season 3: dates 2085 to 2177 is 16/9/2005 to 17/12/2005 (y)

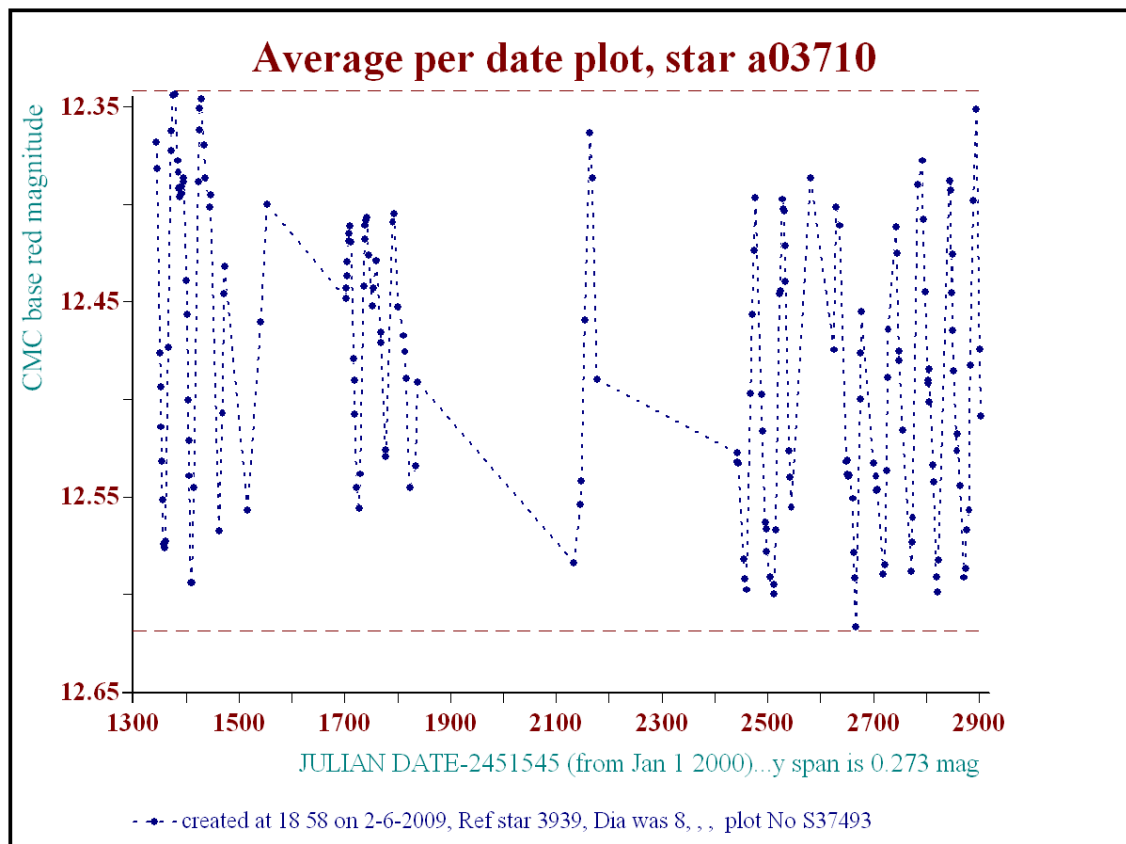
season 4: dates 2442 to 2755 is 8/9/2006 to 19/7/2007 (w)

season 5: dates 2772 to 2903 is 4/8/2007 to 13/12/2007 (v)

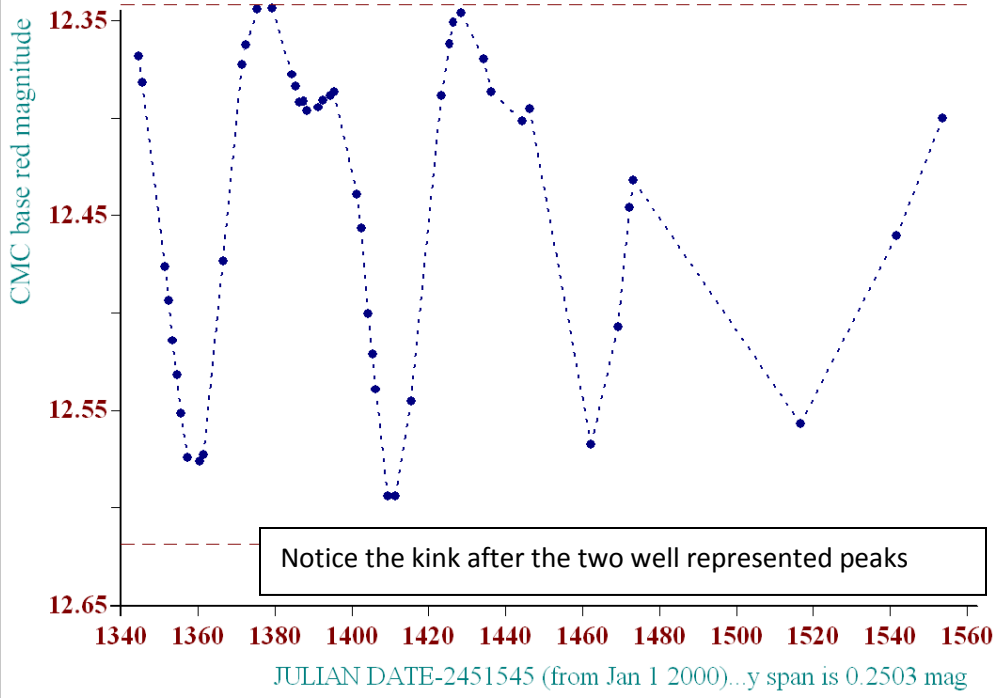
season 6: dates 2930 to 3266 is 9/1/2008 to 10/12/2008 (u)

season 7: dates 3403 to 3539 is 26/4/2009 to 10/9/2009 (t)

With very close comparison star, necessary because of proximity of chip edge

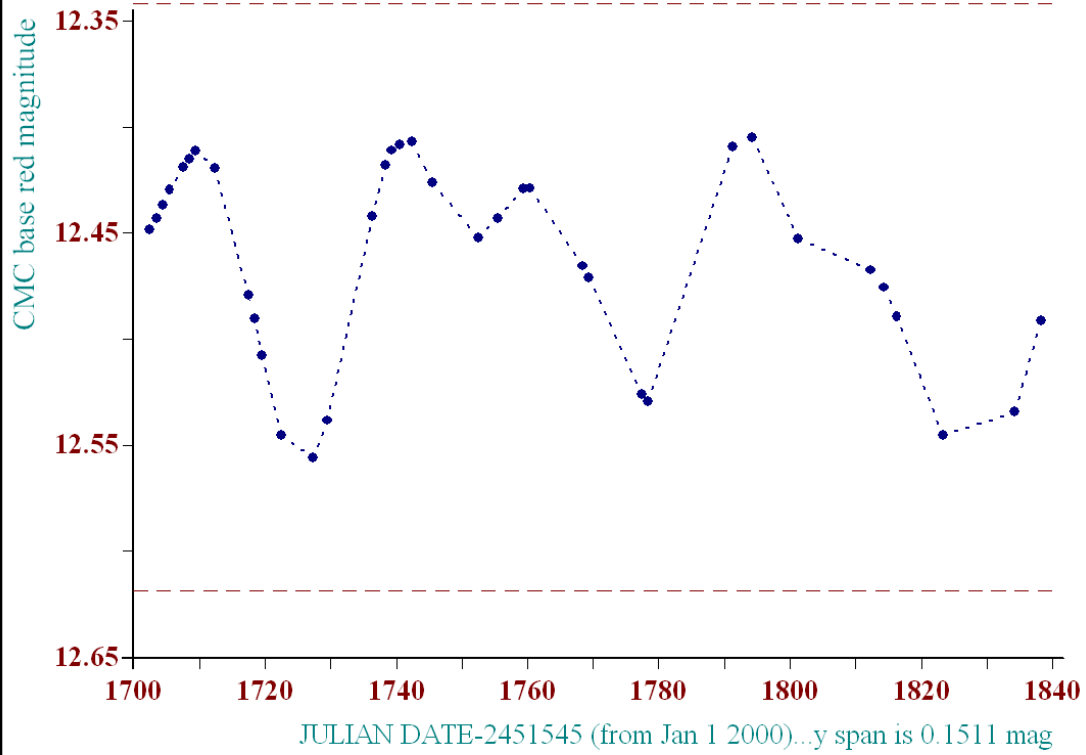


Average per date plot, star a03710



-•- created at 19 3 on 2-6-2009, Ref star 3939, Dia was 8, , , plot No S37494

Average per date plot, star a03710



- ● - created at 19 7 on 2-6-2009, Ref star 3939, Dia was 8, , , plot No S37495