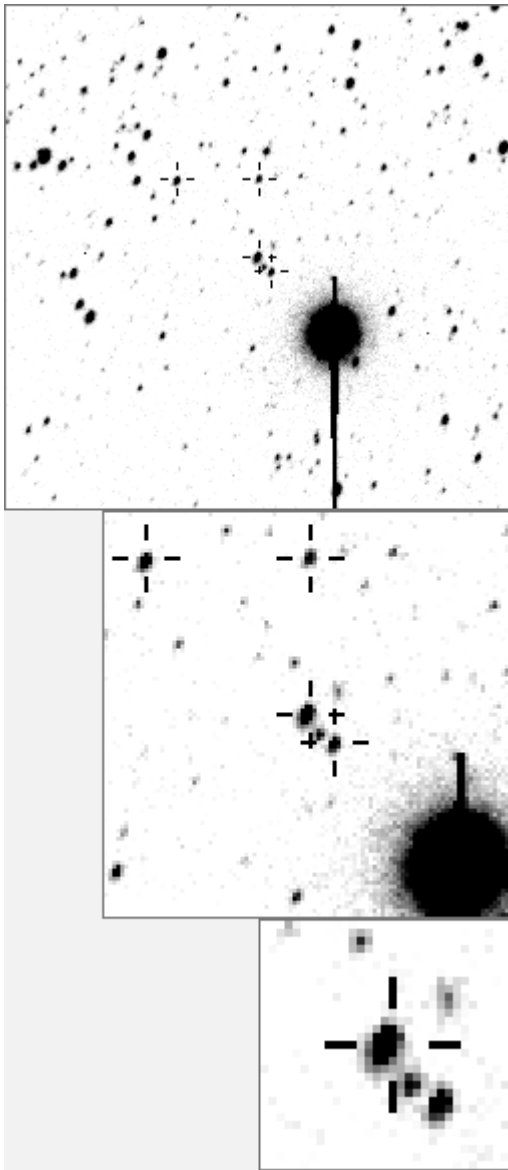


a04040



variables & brighter stars			
. k .	O	4040	v
. . . . f d	a	698	
. g	b	1341	
. . . . h	c	2116	
. i b	d	2249	
. l . n	e	2349	v
.	f	2582	
. m	g	3543	
.	h	4934	
. . c	i	4969	
. j	j	5062	
.	k	5113	
.	l	6707	v
.	m	9836	v
. e	n	11268	v

.	O	4040	v
. a c	a	6707	v
.	b	9836	v
.	c	11268	v
.	d	13629	
.	e	17984	
.	f	19430	
. O	g	21385	
. e	h	21391	
.	i	21392	
.	j	21393	
.	k	21394	
.	l	21395	
d h .	m	21397	
. m l .			

Bitmap sizes are 251, 101 and 31 pixels square, South up. The keys to the right refer to the 1st two bitmaps. The numbers in the key are those in my catalogue 'starlistA'. Stars marked with a cross have been found to be variable.

Data and comments on star a04040
 SWid: a04040 / **USNO id: 0 0 / other id:**
 Co-ordinates, x,y in image z1051: 1559.6 3768.7
J2000 sky co-ordinates: 21 6 27.28 +47 37 27.53
 CMC r'magnitude and 2MASS J,H,K magnitudes: 0 0 0 0
 USNO B1.0 magnitudes, B1,R1,B2,R2,I2: 0 0 0 0 0

Misc comments :

A Sept08 osc, period about 70 days, amp in z 0.11mag, magm to 199 11.95
I had a poss period of 0.98 for this with a rate of 200mmag a day. Checking in zlongs that's unreal and it is 70 odd days as in astarnotes. I'm not absolutely certain that the movement seen is real

Comparison reference star(s) co-ordinates:

a02116: 21 7 51.73 +47 32 21.15

a00199: 21 6 7.63 +47 38 35.36

a13629: 21 6 50.28 +47 38 54.28

a19038: 21 6 16.05 +47 38 58.57

a12367: 21 6 15.22 +47 36 40.61

a18130: 21 6 13.39 +47 40 0.19

Someone who likes a challenge may like to measure this star!

Reminder:

All dates, JD and HJD are from Jan 1st 2000

season 1: dates 1316 to 1553 is 9/8/2003 to 3/4/2004 (a)

season 2: dates 1696 to 1838 is 23/8/2004 to 12/01/2005 (z)

season 3: dates 2085 to 2177 is 16/9/2005 to 17/12/2005 (y)

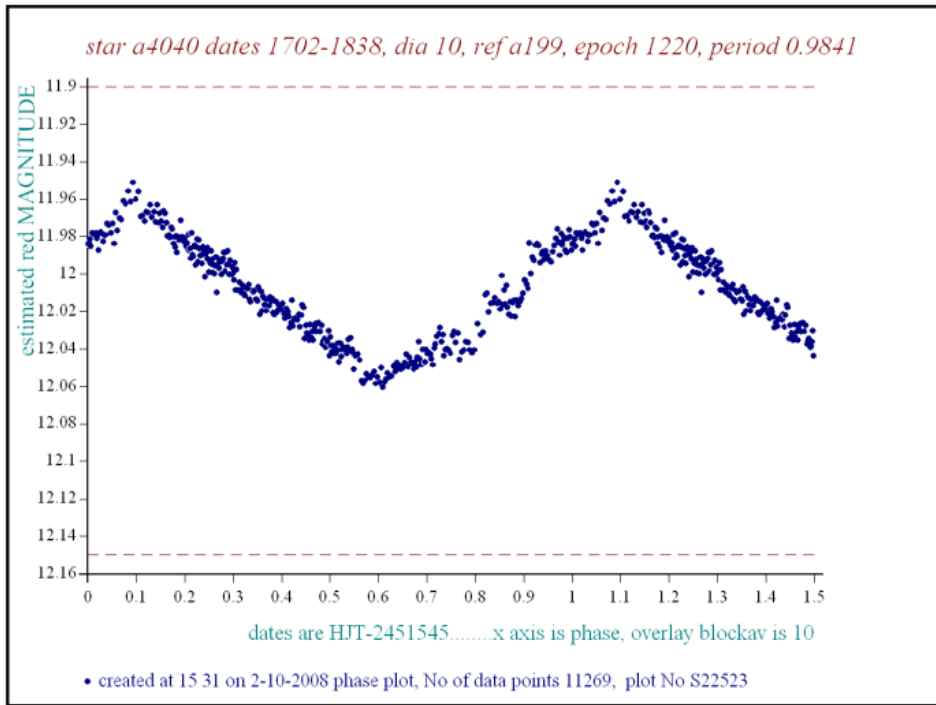
season 4: dates 2442 to 2755 is 8/9/2006 to 19/7/2007 (w)

season 5: dates 2772 to 2903 is 4/8/2007 to 13/12/2007 (v)

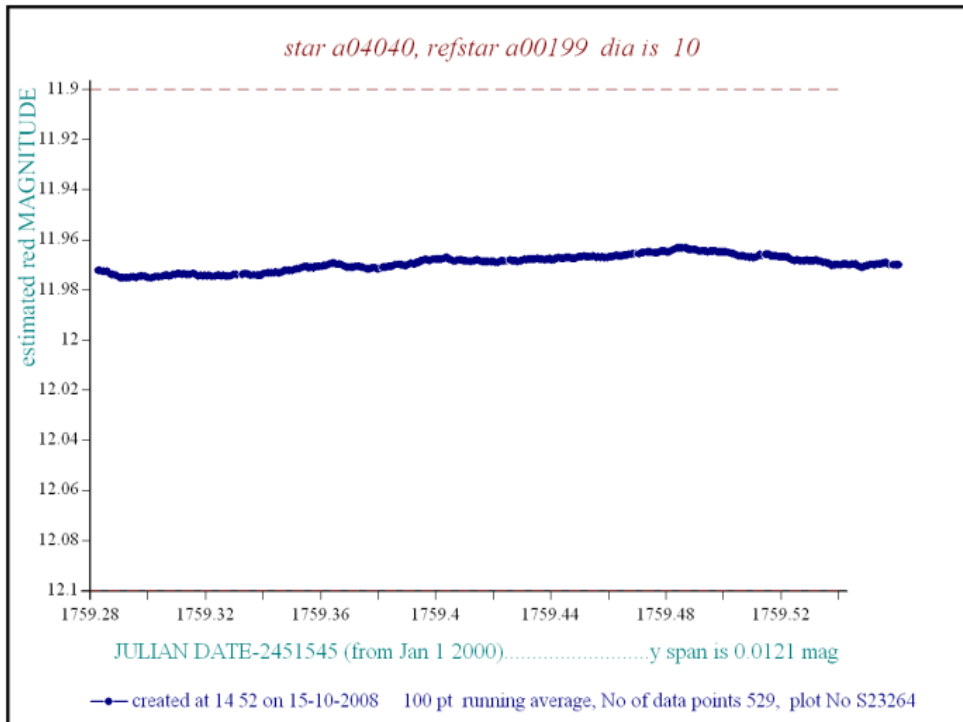
season 6: dates 2930 to 3266 is 9/1/2008 to 10/12/2008 (u)

season 7: dates 3403 to 3539 is 26/4/2009 to 10/9/2009 (t)

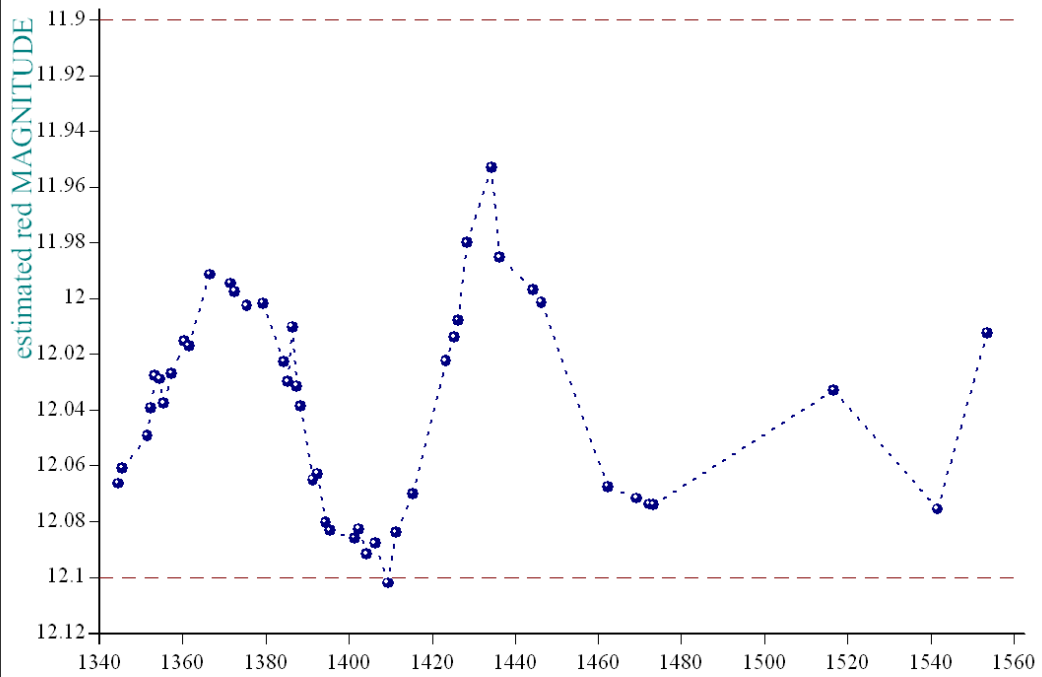
It has a strong false 0.98 day phase plot as below:



According to the 0.98day phase plot it should move at 0.2 magnitudes a day. Checking this, the most mobile day in 2004 is 1759 (below) where it moved 12mmags in 0.3days, (100pt average): that's 40mmag a day

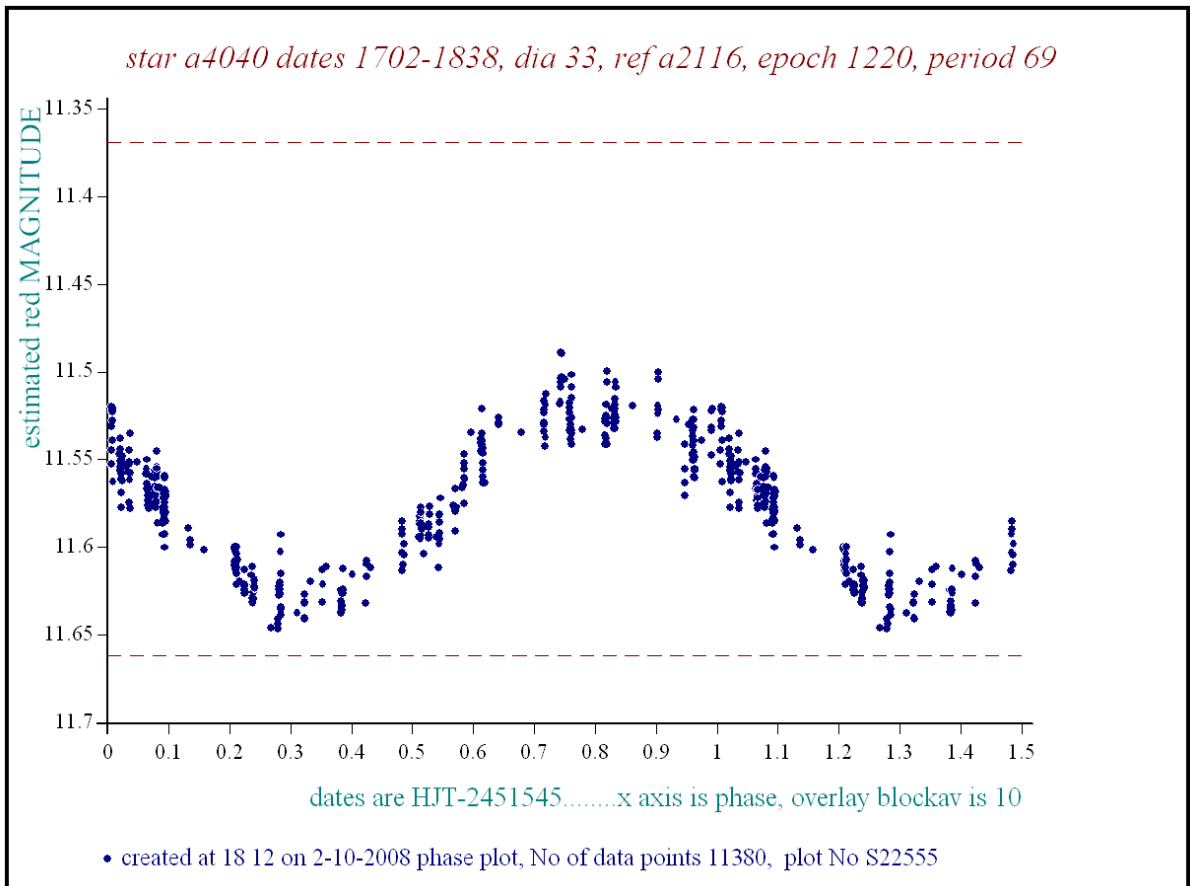
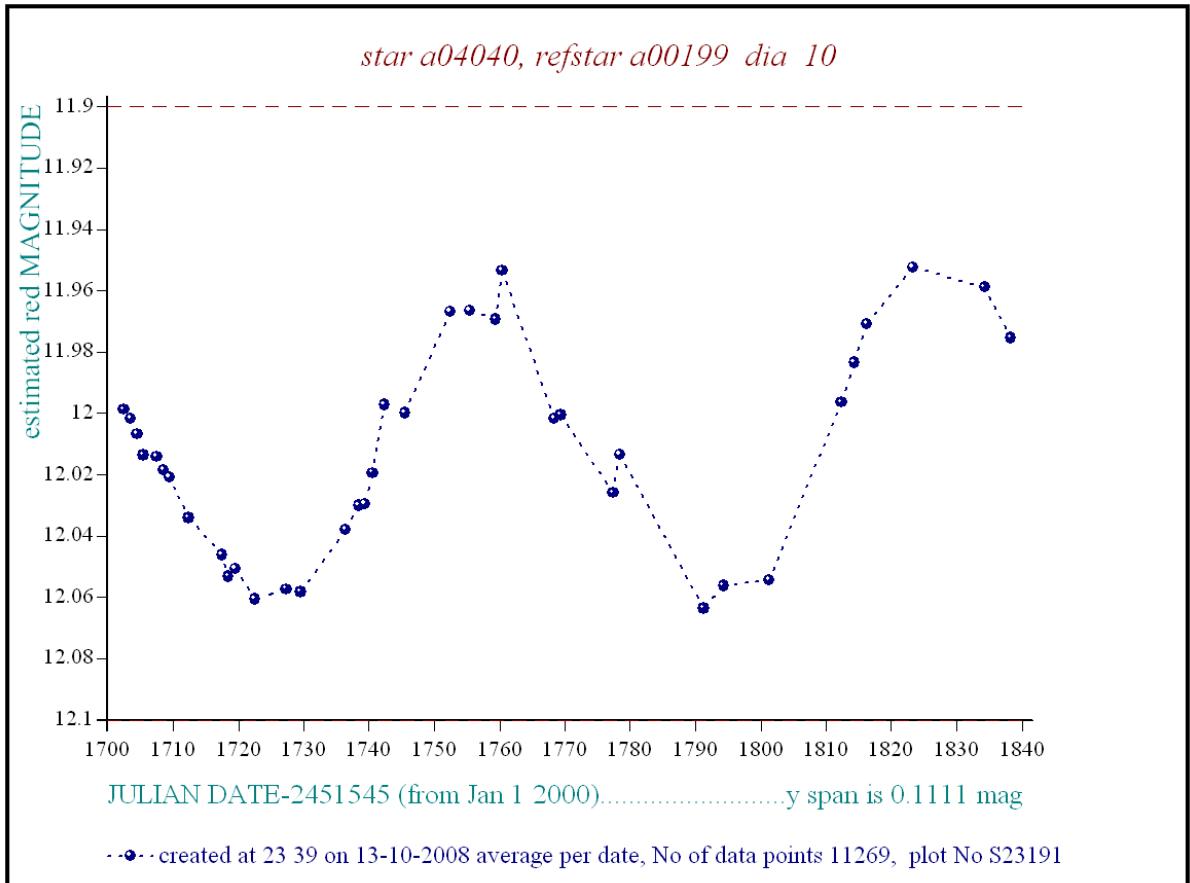


star a04040, refstar a00199 dia 10



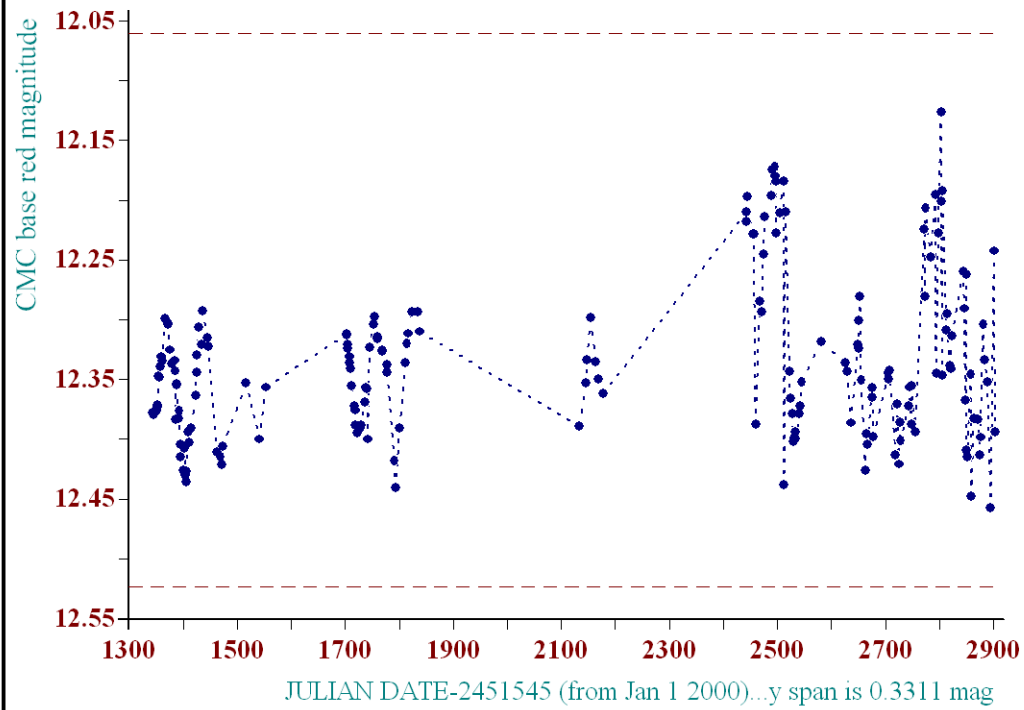
JULIAN DATE-2451545 (from Jan 1 2000).....y span is 0.1492 mag

-●- created at 15 8 on 15-10-2008 average per date, No of data points 8418, plot No S23268



added oct 09

Average per date plot, star a04040



- ♦ - at 14 43 on 4-11-2009, Dia was 8, ref 13629 19038 12367 18130, , plot No S67224 0.7646