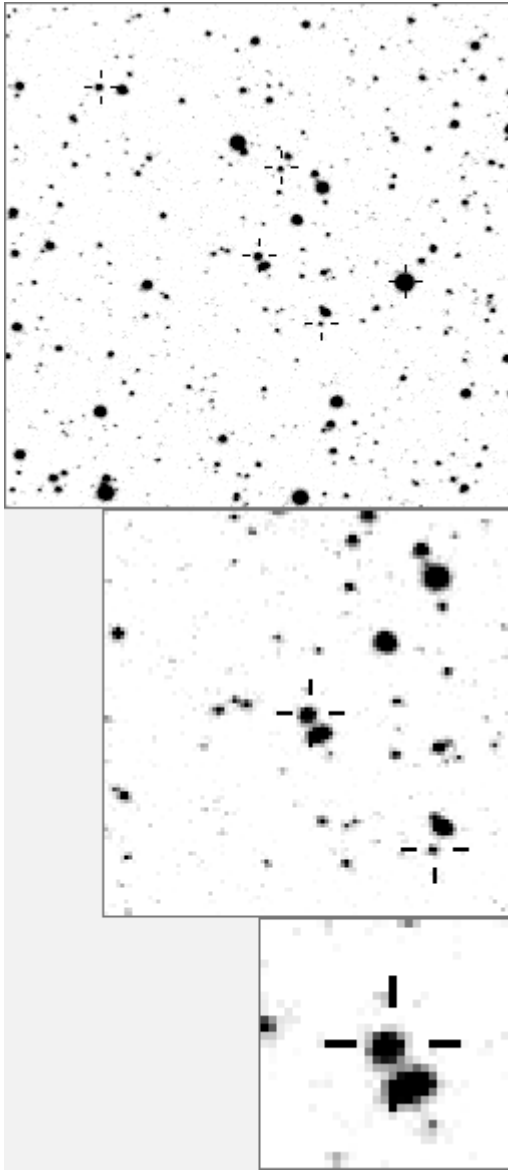


a04266



variables & brighter stars			
. . . . .	O	4266	v
. . . . .	a	38	v
. . l k . . . . .	b	147	
. . . . .	c	210	v
. . . . . d . m . . . . .	d	270	
. . . . .	e	681	
. . . . .	h	824	
. . . . .	O	881	
. . . . . j . . . . . a . . . . .	h	1555	
. . . . .	n	1813	
. . . . .	j	2139	
. . . . .	f	2246	
. . g . . . . .	l	7269	v
i . . . . .	m	12590	v
. . b . . . . . c . . . . .	n	19986	v
-----			
. . . . .	O	4266	v
. . . . .	h	681	
. . . . .	j	1555	
. . . . .	n	3006	
g . . . . .	b	3321	
. . . . .	e	6058	
. . . . .	f	9674	
. . . . .	g	11357	
. . . . . i . O . . . . .	h	12590	v
. . . . .	c	18291	
. . . . .	l	18718	
k . . . . .	j	18718	
. . . . .	k	18875	
. . . . .	d	19918	
. . . . .	m	19986	v
. . . . .	m	19986	v
. . . . .	n	19988	

Bitmap sizes are 251, 101 and 31 pixels square, South up. The keys to the right refer to the 1<sup>st</sup> two bitmaps. The numbers in the key are those in my catalogue 'starlistA'. Stars marked with a cross have been found to be variable.

**Data and comments on star a04266**

SWid: a04266 / **USNO id: 1359 401044 / other id:**

Co-ordinates, x,y in image z1051: 1696.7 1189

**J2000 sky co-ordinates: 21 7 2.65 +45 55 14.72**

CMC r'magnitude and 2MASS J,H,K magnitudes: 12.593 0 0 0

USNO B1.0 magnitudes, B1,R1,B2,R2,I2: 12.82 12.22 13.33 12 12.71

Misc comments :

An eb. Strangely high in 2003/4 even to very close 2246 which messes up the overlay.

To 2246 magm is 11.8, magr 0.45, phase2 at epoch 1218.05132 is 0.545, period is 12.7448.

I made a mistake with the ref, that's the one v close to 7269 in the same field but it seems ok, a smaller dia would be better though, prob why high in 2003

Comparison reference star(s) co-ordinates:

**a01555: 21 7 7.16 +45 54 31.42**

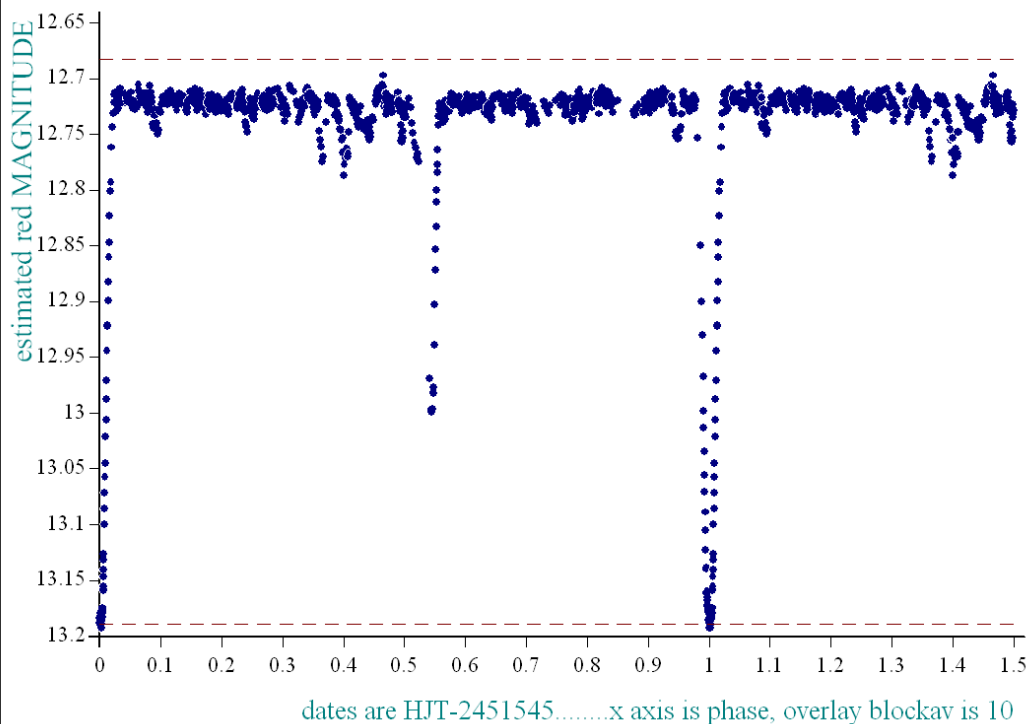
More work needed on the minima and more data

Reminder:

**All dates, JD and HJD are from Jan 1<sup>st</sup> 2000**

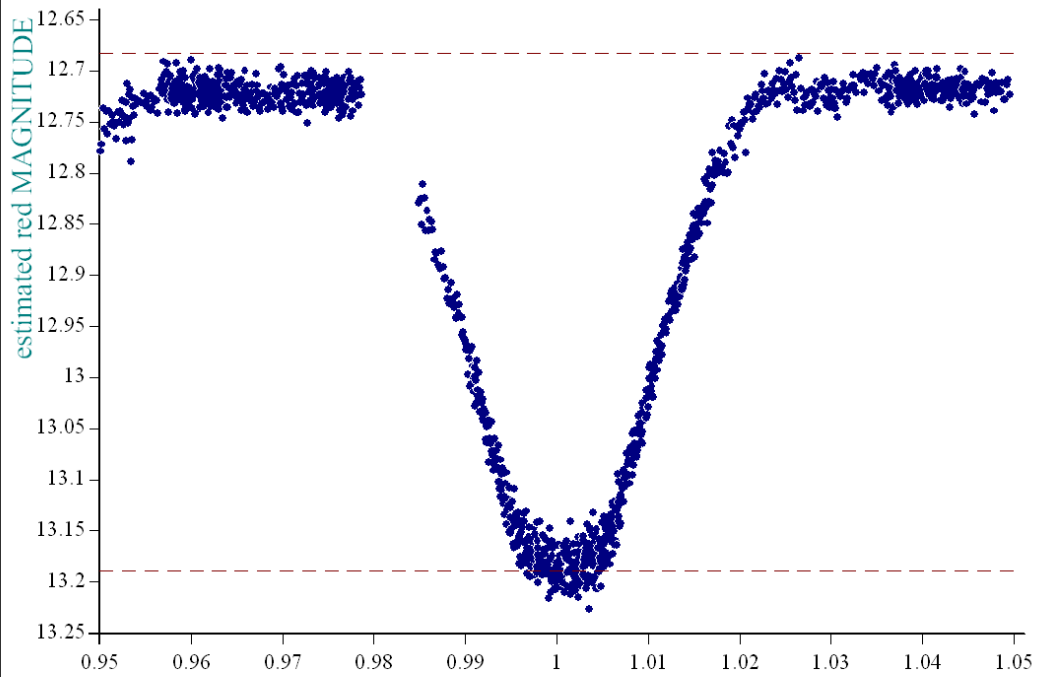
- season 1: dates 1316 to 1553 is 9/8/2003 to 3/4/2004 (a)
- season 2: dates 1696 to 1838 is 23/8/2004 to 12/01/2005 (z)
- season 3: dates 2085 to 2177 is 16/9/2005 to 17/12/2005 (y)
- season 4: dates 2442 to 2755 is 8/9/2006 to 19/7/2007 (w)
- season 5: dates 2772 to 2903 is 4/8/2007 to 13/12/2007 (v)
- season 6: dates 2930 to 3266 is 9/1/2008 to 10/12/2008 (u)
- season 7: dates 3403 to 3539 is 26/4/2009 to 10/9/2009 (t)

*star a4266 dates 1702-2903, dia 6, ref a1555, epoch 1218.05132, period 12.7448*



• created at 13 58 on 8-11-2008 phase plot, No of data points 38555, plot No S27534

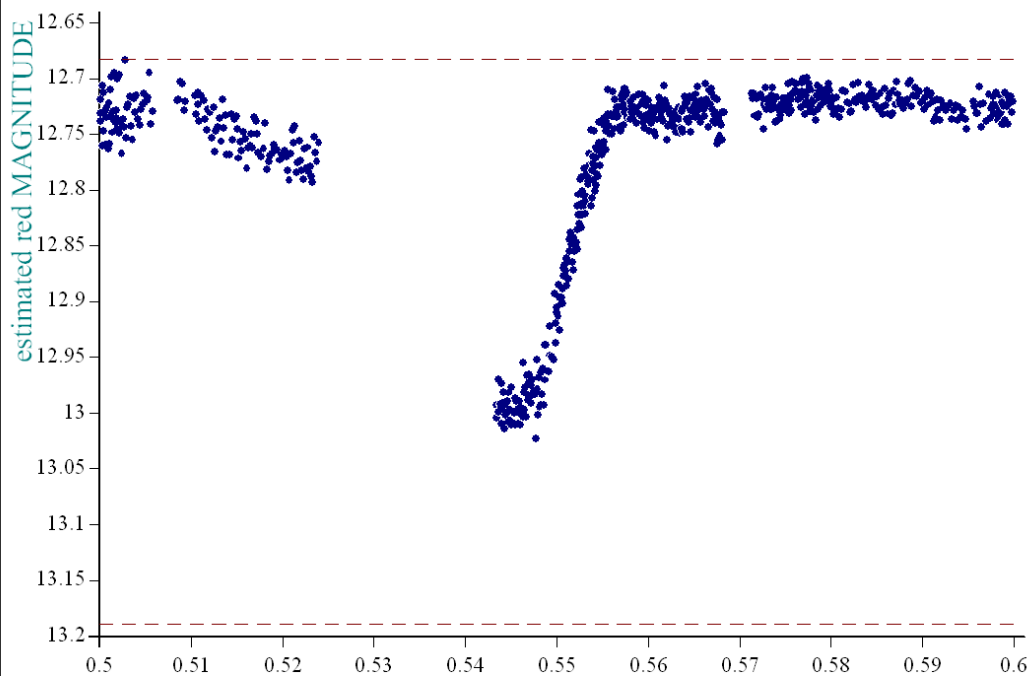
*star a4266 dates 1702-2903, dia 6, ref a1555, epoch 1218.05132, period 12.7448*



dates are HJT-2451545.....x axis is phase, overlay blockav is 10

• created at 13 58 on 8-11-2008 phase plot, No of data points 38555, plot No S27535

*star a4266 dates 1702-2903, dia 6, ref a1555, epoch 1218.05132, period 12.7448*



dates are HJT-2451545.....x axis is phase, overlay blockav is 10

• created at 13 57 on 8-11-2008 phase plot, No of data points 38555, plot No S27533