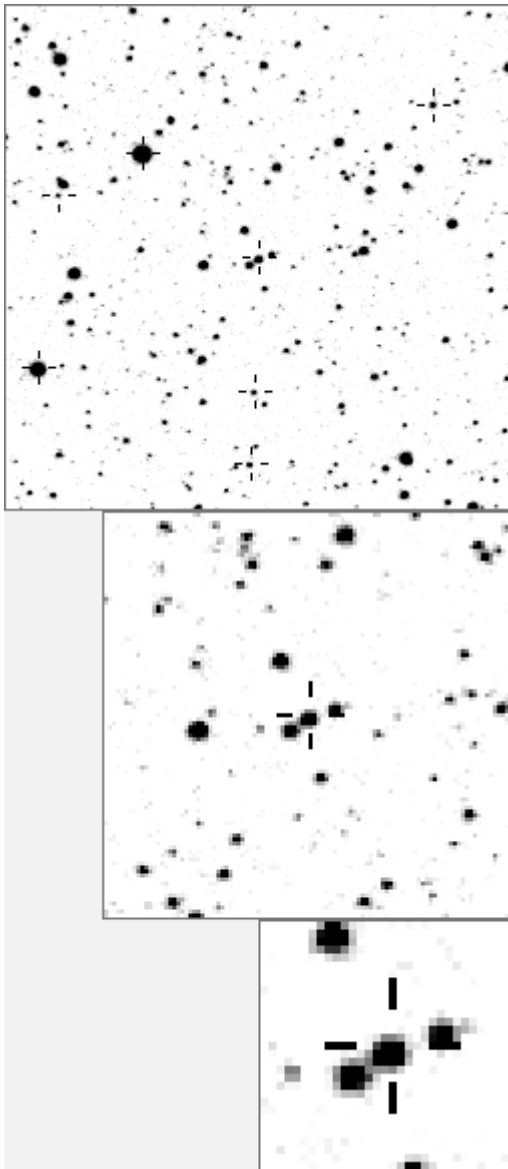


a04339



Variable and brighter stars			
.	.	.	O 4339 v
l	c	.	a 38 v
f	.	.	b 210 v
.	.	.	c 681
.	a	.	d 696
.	n	.	e 824
.	.	.	f 1555
.	e	O	g 1769
.	.	.	h 2060
.	.	.	i 10101 v
b	.	.	j 12223 v
.	.	m	k 12451 v
.	.	.	l 12590 v
.	.	j	m 14003 v
.	.	.	n 19986 v
-----			
.	.	b	O 4339 v
.	.	.	k l a 2441
.	.	.	b 3718
.	.	.	c 4778
.	.	.	d 5844
.	.	c	e 10221
.	.	.	f 12649
.	.	O e	g 12833
.	a	d	h 13569
.	.	j	i 13661
.	.	.	j 13768
.	.	.	h k 14271
.	.	.	l 14378
.	f	.	n m 14494
.	i	.	m n 15024

Bitmap sizes are 251, 101 and 31 pixels square, South up. The keys to the right refer to the 1<sup>st</sup> two bitmaps. The numbers in the key are those in my catalogue 'starlistA'. Stars marked with a cross have been found to be variable.

**Data and comments on star a04339**

SWid: a04339 / **USNO id: 1359 401683 / other id:**

Co-ordinates, x,y in image z1051: 1828.2 1254.4

**J2000 sky co-ordinates: 21 7 32.62 +45 57 51.83**

CMC r'magnitude and 2MASS J,H,K magnitudes: 12.24 10.18 9.45 9.221

USNO B1.0 magnitudes, B1,R1,B2,R2,I2: 12.78 10.65 0 11.89 0

Misc comments :

19-6 -2007, mpv about 22d, close to 2441 and 5844 need to check this, m11.64, mr 0.35

Comparison reference star(s) co-ordinates:

**a00037: 21 9 4.2 +45 59 12.26**

**a00203: 21 11 57.66 +47 13 10.88**

Reminder:

**All dates, JD and HJD are from Jan 1<sup>st</sup> 2000**

season 1: dates 1316 to 1553 is 9/8/2003 to 3/4/2004 **(a)**

season 2: dates 1696 to 1838 is 23/8/2004 to 12/01/2005 **(z)**

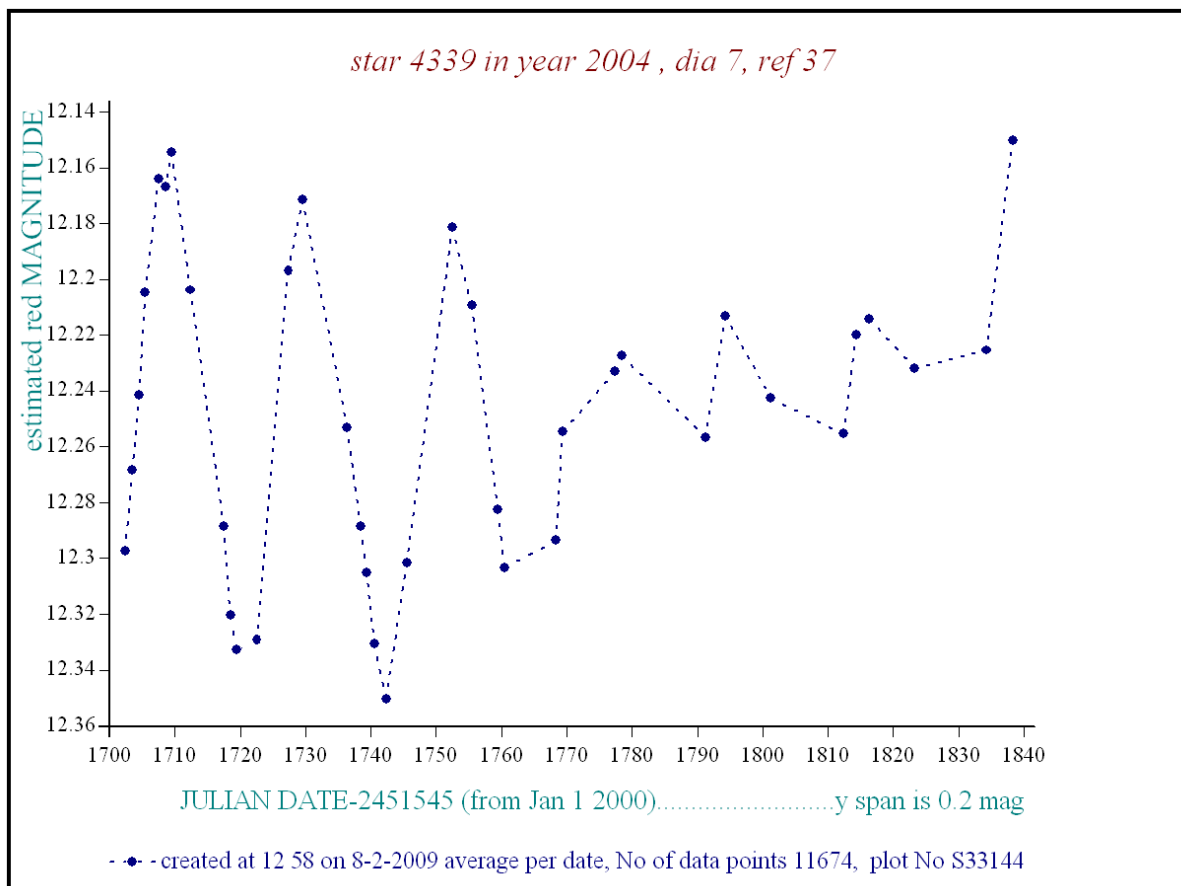
season 3: dates 2085 to 2177 is 16/9/2005 to 17/12/2005 **(y)**

season 4: dates 2442 to 2755 is 8/9/2006 to 19/7/2007 **(w)**

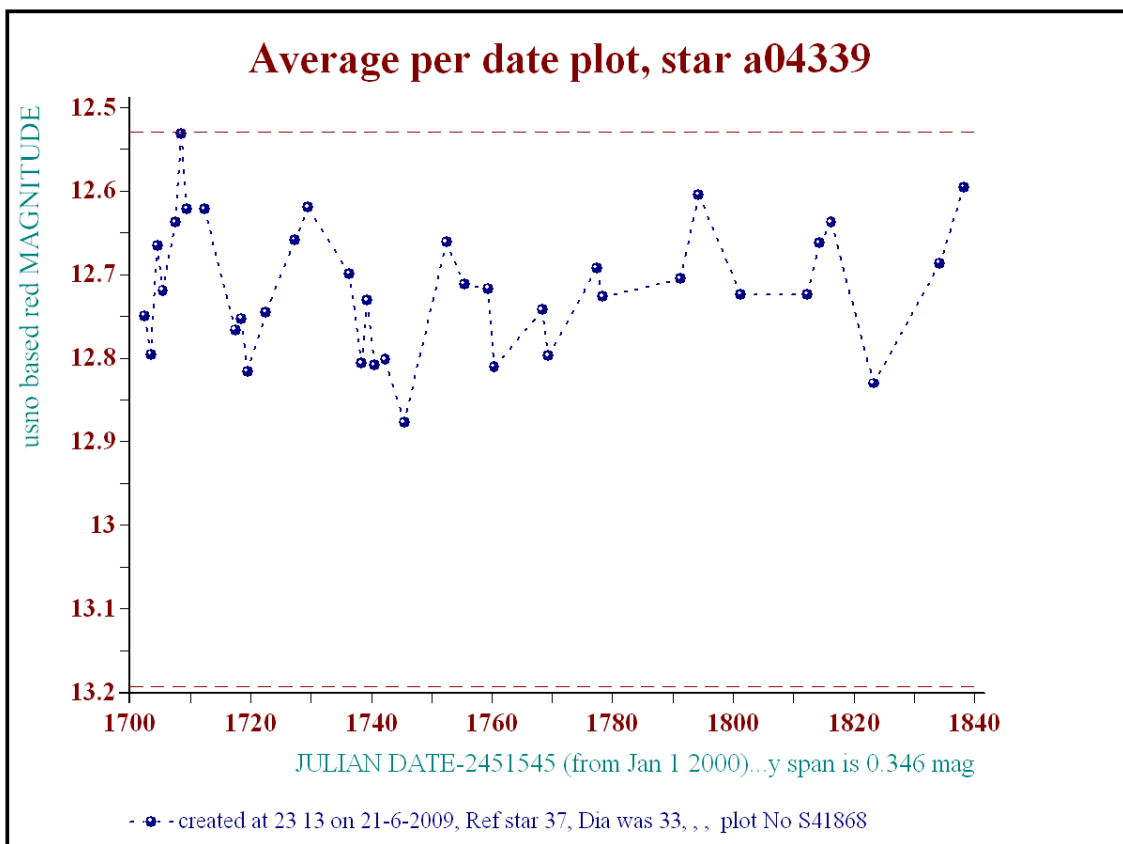
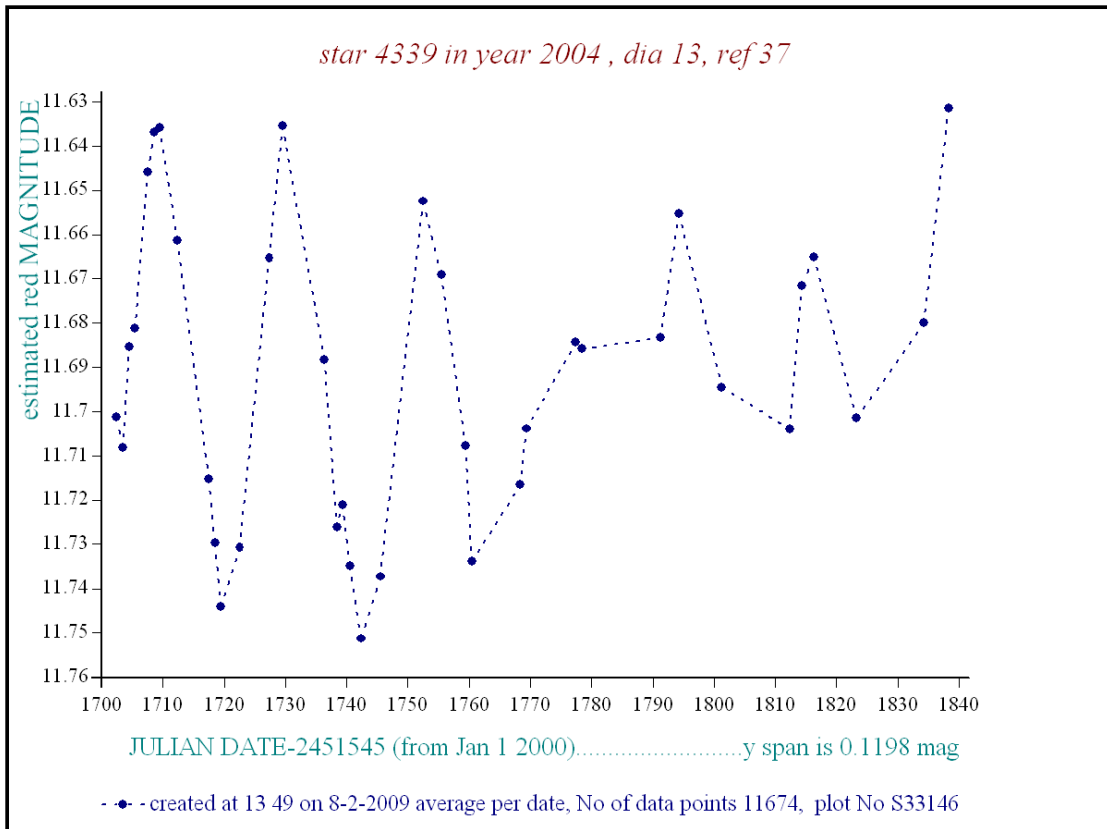
season 5: dates 2772 to 2903 is 4/8/2007 to 13/12/2007 **(v)**

season 6: dates 2930 to 3266 is 9/1/2008 to 10/12/2008 **(u)**

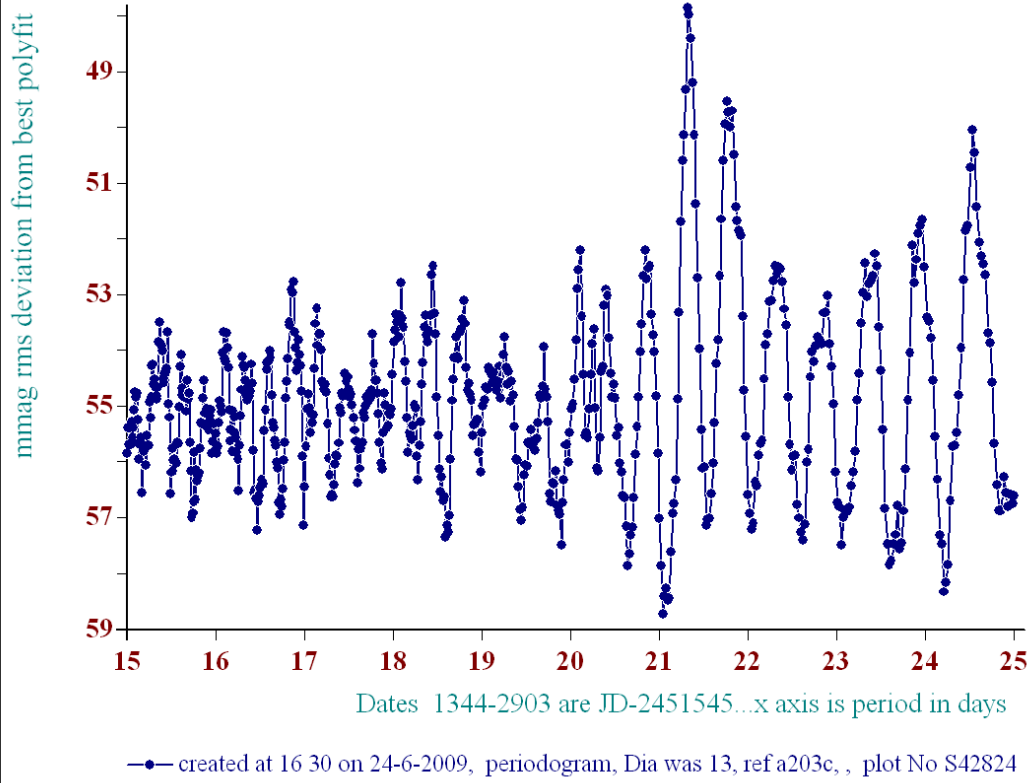
season 7: dates 3403 to 3539 is 26/4/2009 to 10/9/2009 **(t)**



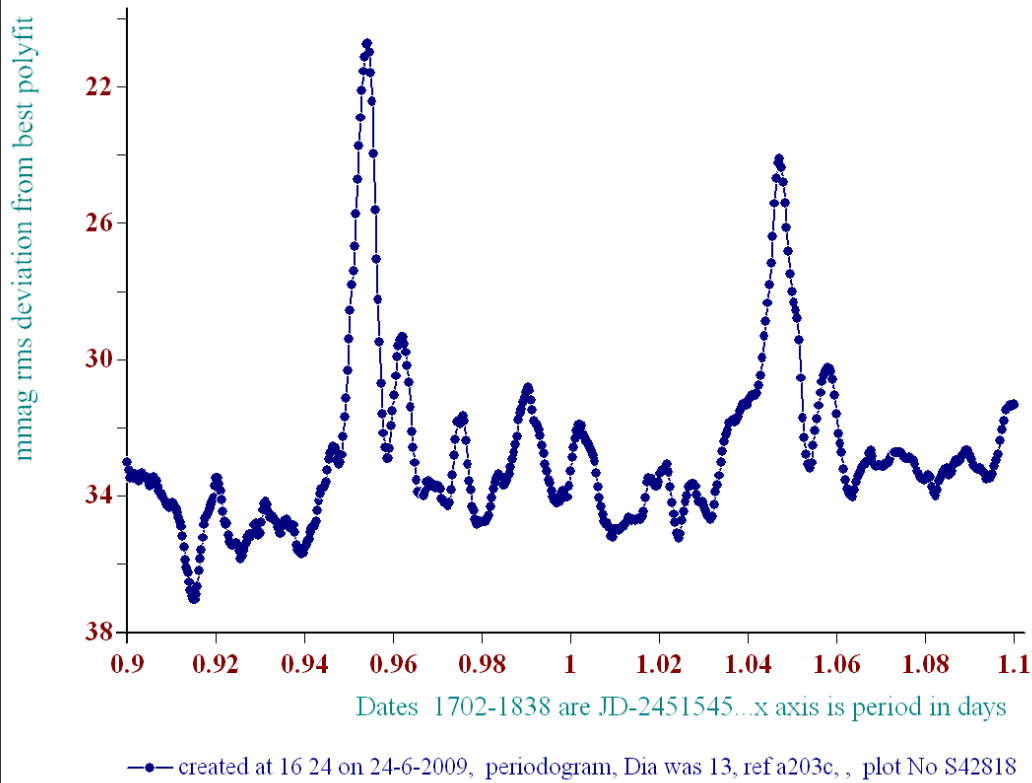
The movement is less and mag higher at nom dia 13:



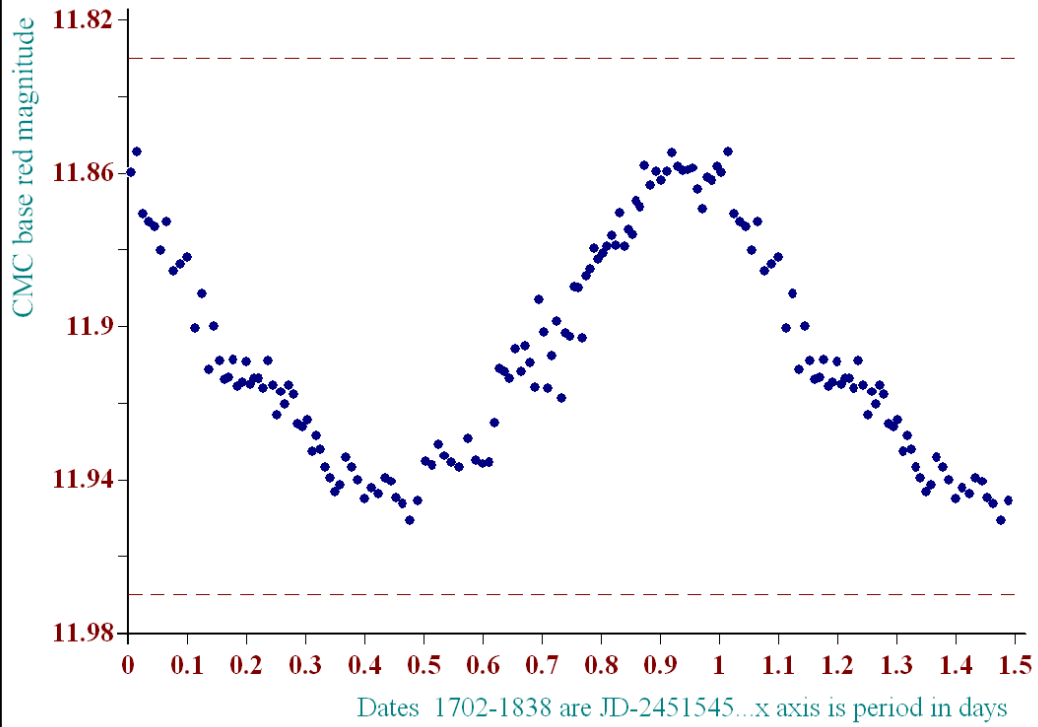
### periodogram of star a4339



### periodogram of star a4339



## Phase Plot, Star a4339 period 0.954d



• created at 16 25 on 24-6-2009, phase plot, Dia was 13, ref a203c, epoch 1700, plot No S42819