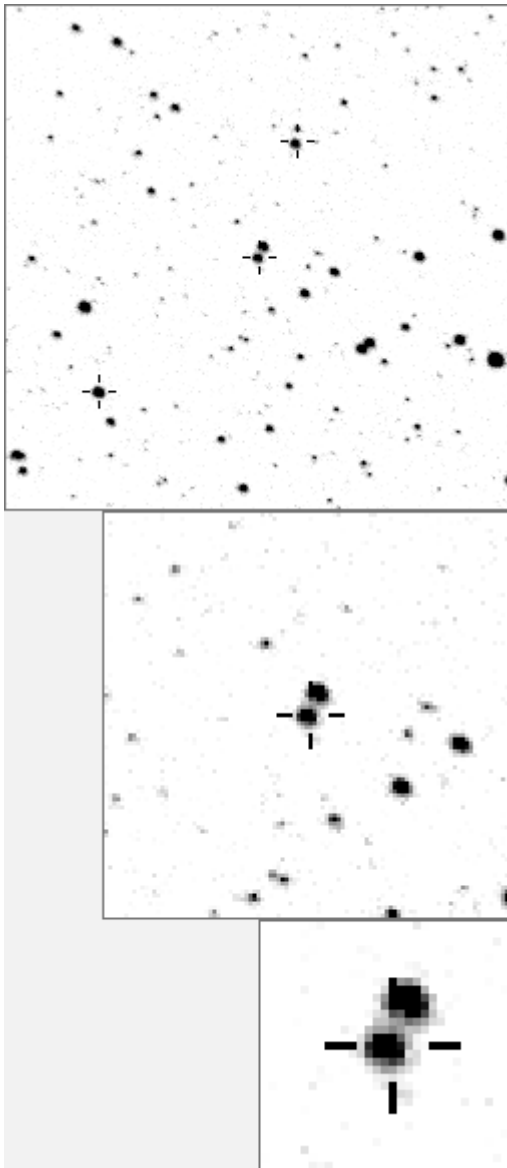


a05128



variable and brighter stars	
. . . . .	O 5128 v
. . . . .	a 413
. . . . .	b 2152
. . . . .	c 2521 v
. . . . . k . . . . .	d 2525
. . . . .	e 3092
. . . . .	d f 3401
. . . . . i n h . .	g 3649
. b . . . . . l . . . . .	h 3759
. . . . .	e . i 4091
. . . . . g . . . . . a	j 4336
. c . . . . .	k 4932 v
. . . . .	l 5731
j . . . . .	m 5799
. . . . . m . . . . .	n 6114
-----	
. . . . .	O 5128 v
. . . . .	a 4091
. l . . . . .	b 5731
. m . . . . .	c 6114
. . . . . h . . . . .	d 13897
. . . . .	e 18174
. . . . . a . . . . .	f 22514
. . . . . O . . . . . g . .	g 24084
. n . . . . . j . c . .	h 24334
. . . . .	i 24906
. . . . . b . . . . .	j 25803
. . . . . e . . . . .	k 27215
. . . . .	l 28924
. . . . . k . . . . .	m 33538
. . . . . f . . . . . d . . . . .	n 34224

Bitmap sizes are 251, 101 and 31 pixels square, South up. The keys to the right refer to the 1<sup>st</sup> two bitmaps. The numbers in the key are those in my catalogue 'starlistA'. Stars marked with a cross have been found to be variable.

Data and comments on star a05128

SWid: a05128 / **USNO id: 1355 414501 / other id:**

Co-ordinates, x,y in image z1051: 1217.6 686.7

**J2000 sky co-ordinates: 21 5 14.84 45 35 12.85**

CMC r'magnitude and 2MASS J,H,K magnitudes: 12.603 11.238 11.042 10.964

USNO B1.0 magnitudes, B1,R1,B2,R2,I2: 13.95 11.87 13.83 12.16 11.46

Misc comments :

1 Sept 08 eb, period 8.42803, eccentric,  $\phi_2$  is 0.338, magm to 366 is 12.62, magr1=0.15, magr2=0.12

Mins full width: m1=0.09, ph= 0.76d m2=0.04, ph=0.34d.

Mins fwhm, m1=0.045, ph=0.38d m2=0.02, ph=0.17d

The minima are nearly triangular

Comparison reference star(s) co-ordinates:

**187: 21 5 15.45 45 29 2.38**

**366: 21 4 41.64 45 39 3.58**

colour temperature estimate: 6047K

**This pair are considerably eccentric with  $\phi_2=0.338$**

**More years need to be added plus CMC mags**

Reminder:

**All dates, JD and HJD are from Jan 1<sup>st</sup> 2000**

season 1: dates 1316 to 1553 is 9/8/2003 to 3/4/2004 (a)

season 2: dates 1696 to 1838 is 23/8/2004 to 12/01/2005 (z)

season 3: dates 2085 to 2177 is 16/9/2005 to 17/12/2005 (y)

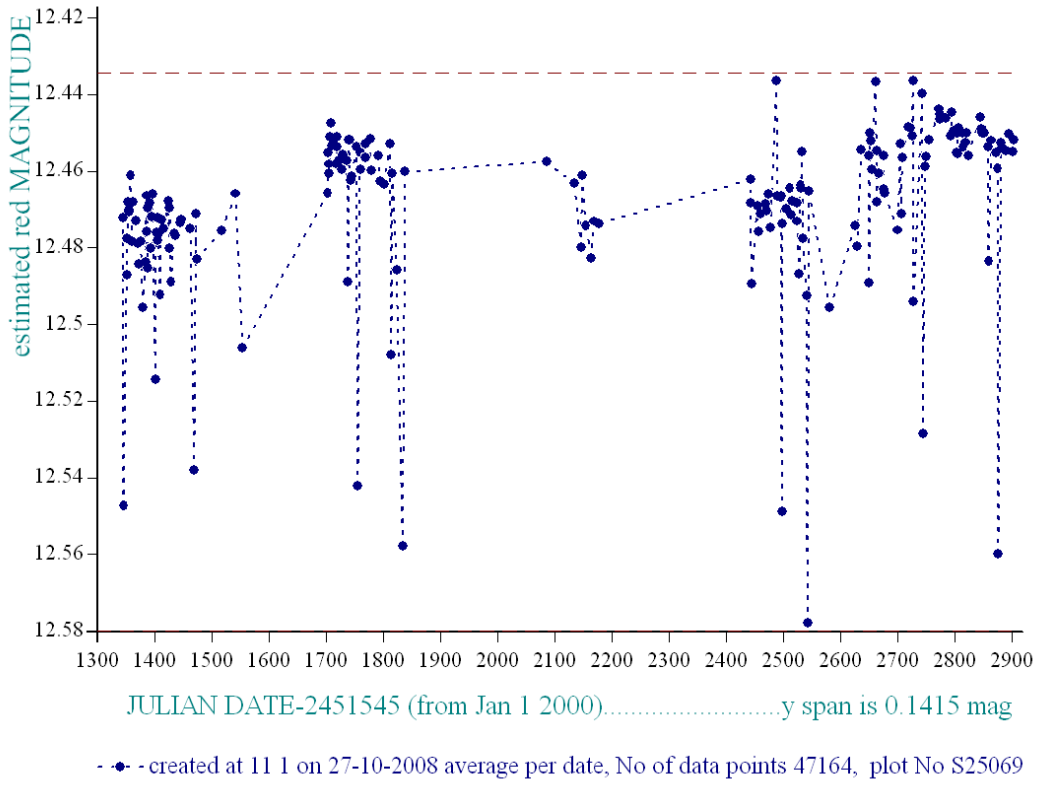
season 4: dates 2442 to 2755 is 8/9/2006 to 19/7/2007 (w)

season 5: dates 2772 to 2903 is 4/8/2007 to 13/12/2007 (v)

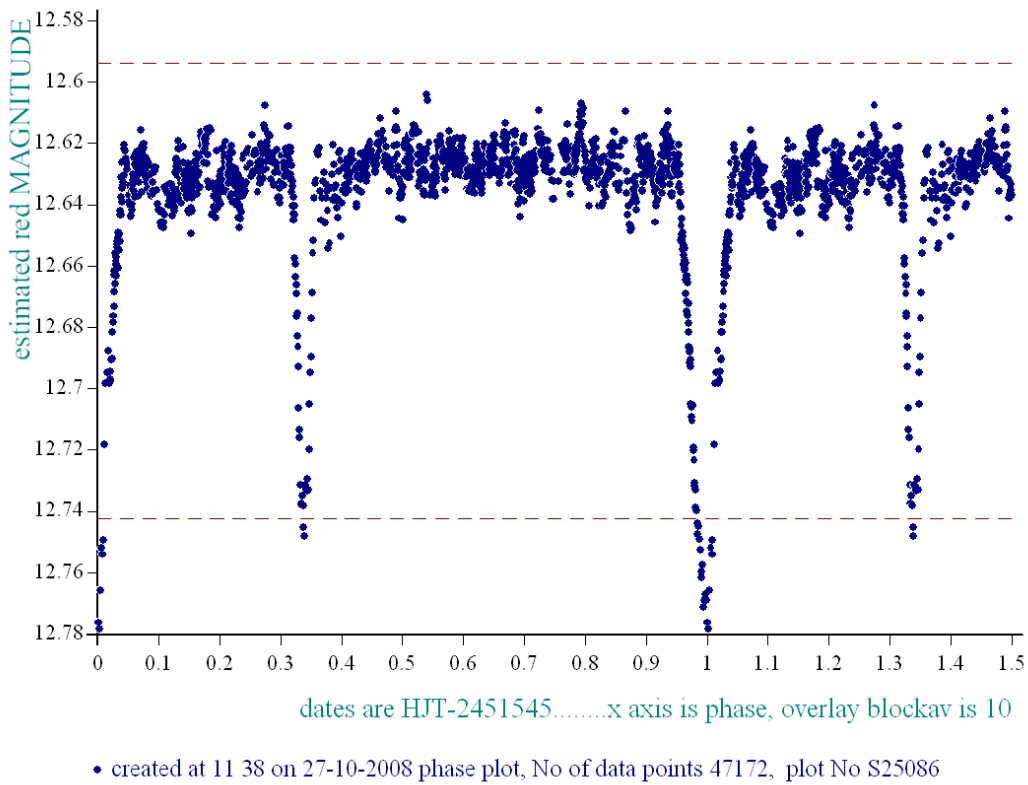
season 6: dates 2930 to 3266 is 9/1/2008 to 10/12/2008 (u)

season 7: dates 3403 to 3539 is 26/4/2009 to 10/9/2009 (t)

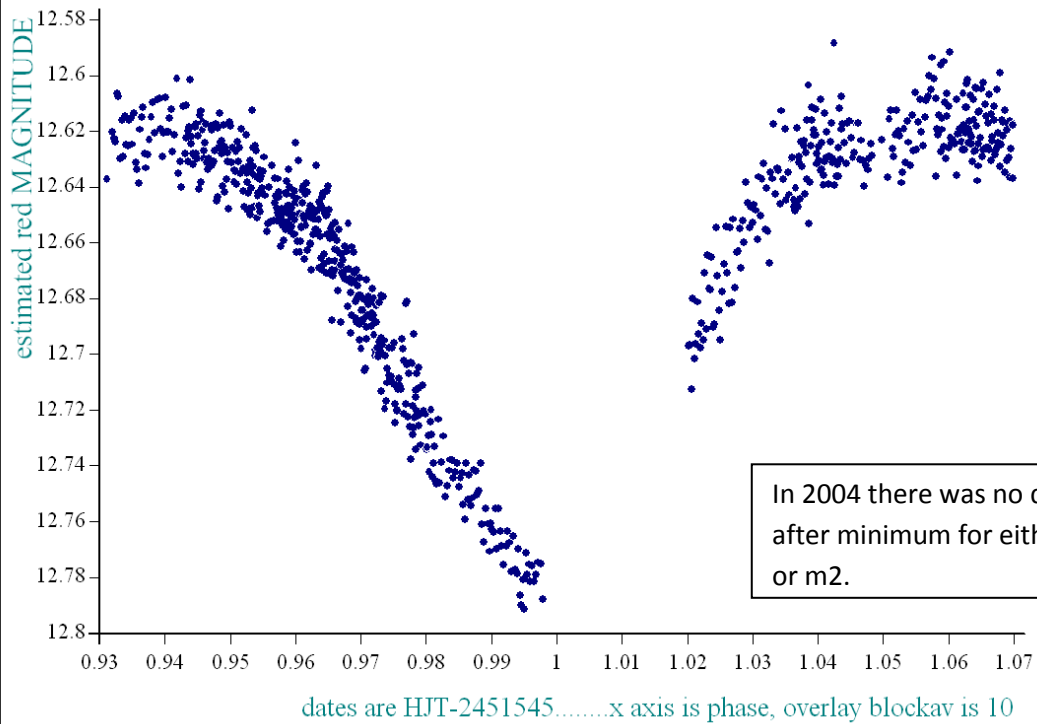
*star a05128, refstar a00187 dia 8*



*star a5128 dates 1344-2903, dia 8, ref a366, epoch 1216.226, period 8.42803*

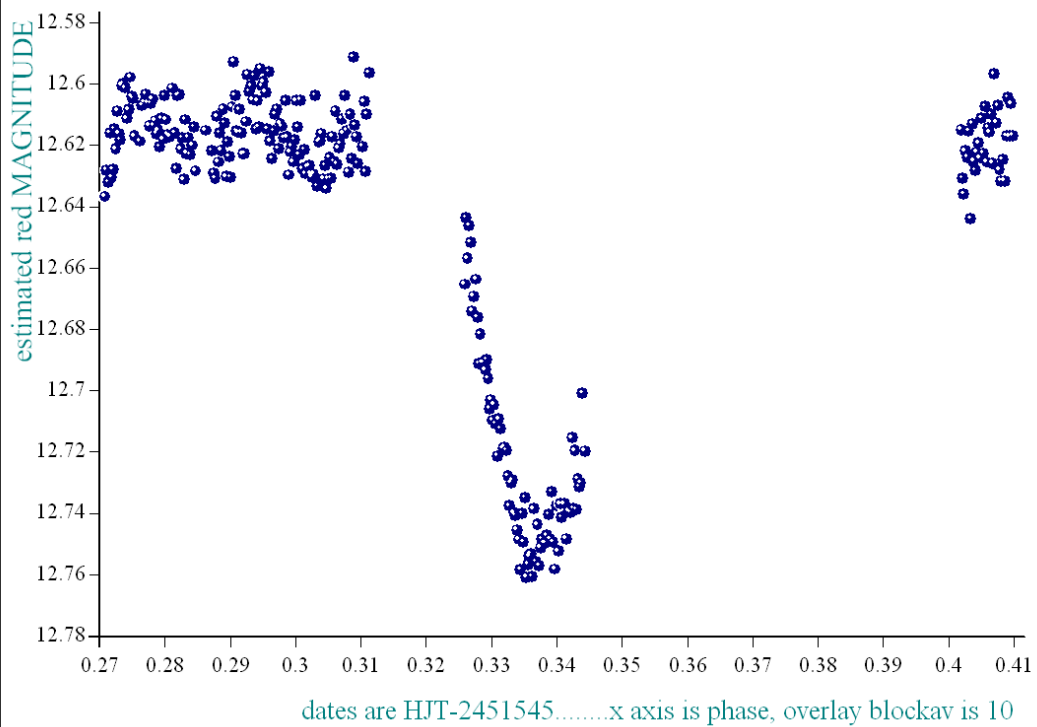


*star a5128 dates 1702-1838, dia 8, ref a366, epoch 1216.226, period 8.42803*



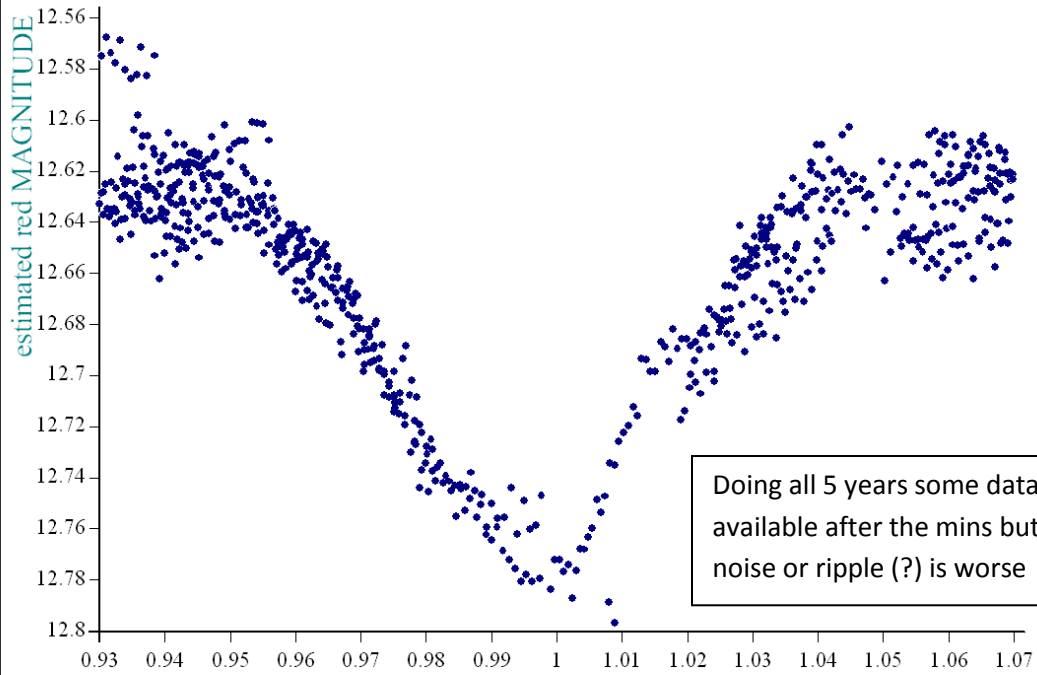
• created at 18 42 on 25-9-2008 phase plot, No of data points 11244, plot No S22080

*star a5128 dates 1702-1838, dia 8, ref a366, epoch 1216.226, period 8.42803*



• created at 19 1 on 25-9-2008 phase plot, No of data points 11244, plot No S22096

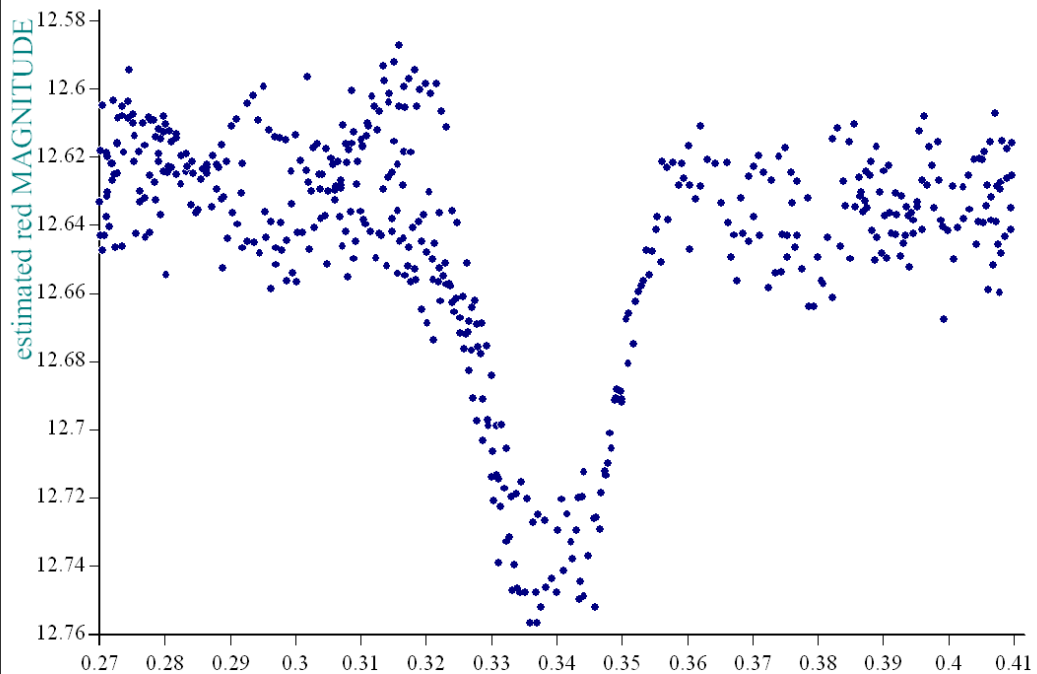
*star a5128 dates 1344-2903, dia 8, ref a366, epoch 1216.226, period 8.42803*



dates are HJT-2451545.....x axis is phase, overlay blockav is 10

• created at 21 51 on 25-9-2008 phase plot, No of data points 47172, plot No S22102

*star a5128 dates 1344-2903, dia 8, ref a366, epoch 1216.226, period 8.42803*



dates are HJT-2451545.....x axis is phase, overlay blockav is 10

• created at 21 50 on 25-9-2008 phase plot, No of data points 47172, plot No S22100