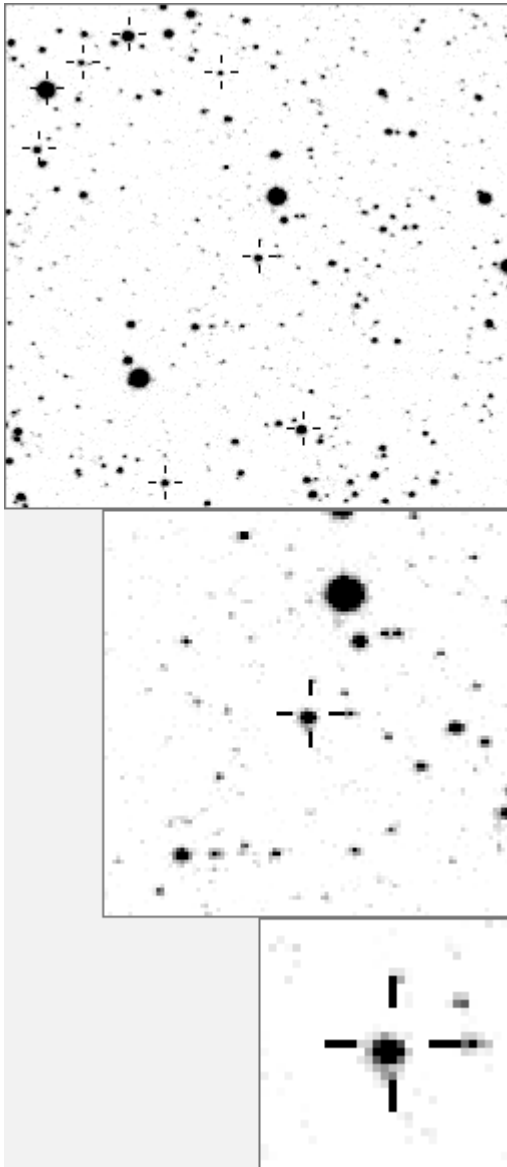


a06180



variable and brighter stars			
. . . e g h	O	6180	v
. . m	a	24	
. c n	b	55	
.	c	70	v
l i	d	811	
. b d	e	1246	v
.	f	2294	v
. O	g	3138	
.	h	3705	
. j	i	3748	
.	j	5191	v
. a	k	6673	v
. f	l	7262	v
.	m	12748	v
. k	n	17090	v

. g	O	6180	v
.	a	55	
. a	b	6849	
.	c	6970	
. c m	d	9186	
.	e	13473	
.	f	17247	
. O n	g	19132	
.	h	20089	
. f	i	20659	
.	j	22081	
. e	k	22656	
. . b . l . i . . k	l	23146	
.	m	23434	
.	n	24726	

Bitmap sizes are 251, 101 and 31 pixels square, South up. The keys to the right refer to the 1st two bitmaps. The numbers in the key are those in my catalogue 'starlistA'. Stars marked with a cross have been found to be variable.

Data and comments on star a06180

SWid: a06180 / **USNO id: 1360 393039** / other id:

Co-ordinates, x,y in image z1051: 1432.9 1399.4

J2000 sky co-ordinates: 21 6 1.95 46 3 31.68

CMC r'magnitude and 2MASS J,H,K magnitudes: 12.886 11.025 10.499 10.342

USNO B1.0 magnitudes, B1,R1,B2,R2,I2: 14.7 12.63 14.76 12.43 12.6

Misc comments :

Red irregular, $p=60-80d$, found Aug08 , susebs magm to ref 55 is 12.6, magr 0.1

Comparison reference star(s) co-ordinates:

55: 21 6 4.18 46 2 17.81

colour temperature estimate: **4907K**

CMC mags needed and more plots

Reminder:

All dates, JD and HJD are from Jan 1st 2000

season 1: dates 1316 to 1553 is 9/8/2003 to 3/4/2004 **(a)**

season 2: dates 1696 to 1838 is 23/8/2004 to 12/01/2005 **(z)**

season 3: dates 2085 to 2177 is 16/9/2005 to 17/12/2005 **(y)**

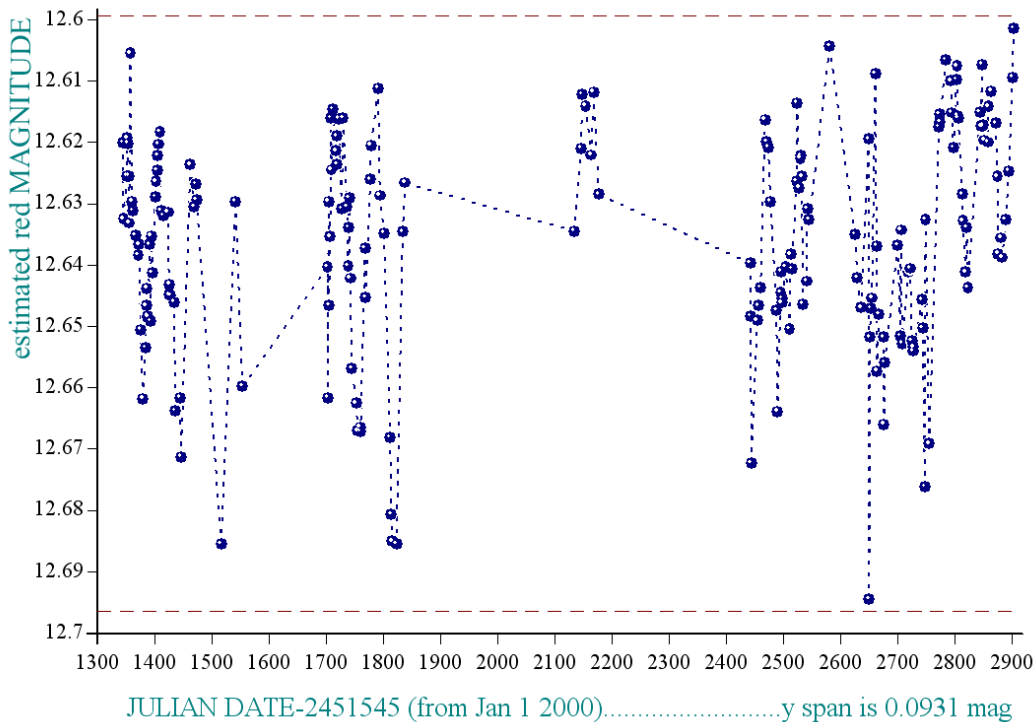
season 4: dates 2442 to 2755 is 8/9/2006 to 19/7/2007 **(w)**

season 5: dates 2772 to 2903 is 4/8/2007 to 13/12/2007 **(v)**

season 6: dates 2930 to 3266 is 9/1/2008 to 10/12/2008 **(u)**

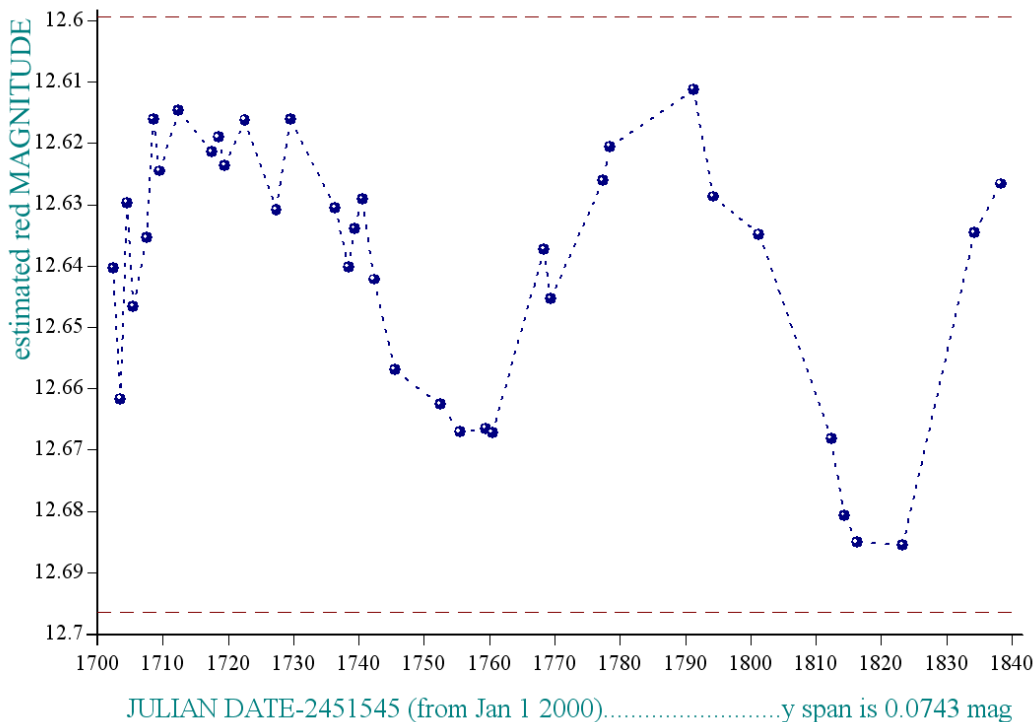
season 7: dates 3403 to 3539 is 26/4/2009 to 10/9/2009 **(t)**

star a06180, refstar a00055 dia 8



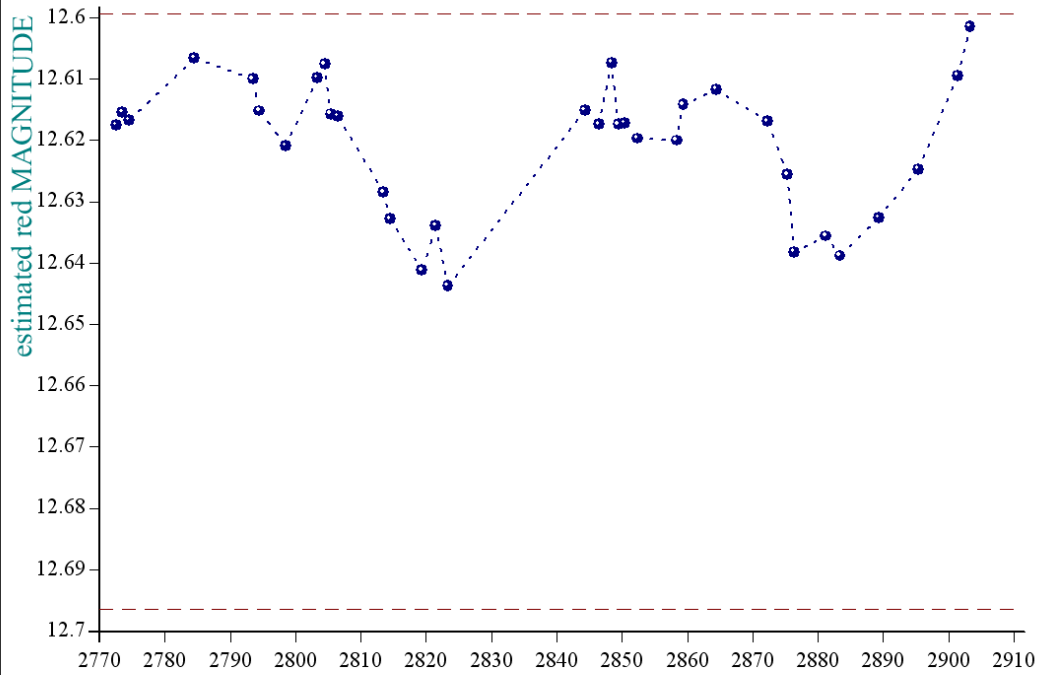
- * - created at 23 54 on 21-8 -2008 average per date, No of data points 50706, plot No S18373

star a06180, refstar a00055 dia 8



- * - created at 23 55 on 21-8 -2008 average per date, No of data points 12180, plot No S18374

star a06180, refstar a00055 dia 8



- * - created at 23 56 on 21-8 -2008 average per date, No of data points 11194, plot No S18375