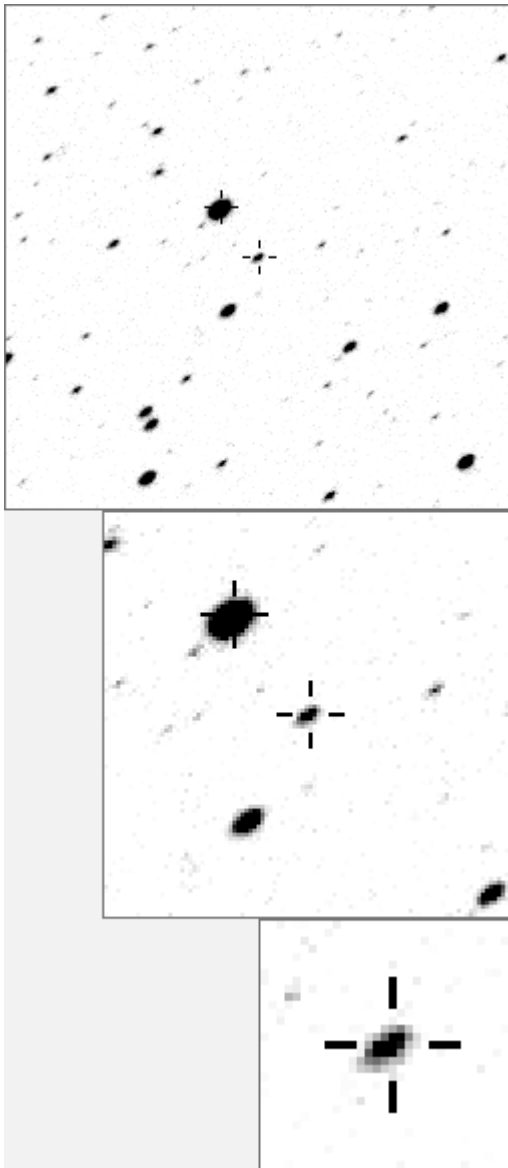


a07008



variables & brighter stars			
.....	O	7008	v
.....	m	a	63 v
.....	b	849	
.....	l	c	1206
.....	n	d	1795
.....	e	2570	
.....	a	f	3605
.....	j	O	g 3616
.....	h	4212	
.....	d	e	i 7165
.....	f	j	8800
.....	k	9732	
.....	h	l	10059
.....	b	m	10944
.....	c	i	n 12052

.....	O	7008	v
.....	a	63	v
.....	b	1795	
.....	i	a	c 3605
.....	d	23328	
.....	e	26709	
.....	f	g	f 39862
.....	l	O	g 47908
.....	k	h	51515
.....	i	54044	
.....	h	j	j 54401
.....	b	k	54790
.....	n	l	55151
.....	m	56340	
.....	c	n	59339

Bitmap sizes are 251, 101 and 31 pixels square, South up.
 The keys to the right refer to the 1st two bitmaps. The numbers in the key are those in my catalogue 'starlistA'.
 Stars marked with a cross have been found to be variable.

Data and comments on star a07008

SWid: a07008 / **USNO id: 1372 477683 / other id:**

Co-ordinates, x,y in image z1051: 287.8 3180.8

J2000 sky co-ordinates: **21 1 32.29 +47 13 19.32**

CMC r'magnitude and 2MASS J,H,K magnitudes: 13.055 10.069 9.29 9.003

USNO B1.0 magnitudes, B1,R1,B2,R2,I2: 15.6 12.81 15.26 12.78 11.2

Misc comments :

oct 09 curious mpv, series of dips in 2003 and 2004, they fade a bit in both seasons, m 12.98, up to .14mag, about 35d T3989 °K

This star was done with multi refs

Comparison reference star(s) co-ordinates:

a07508: 21 1 36.43 +47 7 12.59
a10059: 21 1 33.4 +47 18 44.46
a09537: 21 1 20.97 +47 10 46.71
a10944: 21 2 0.74 +47 9 31.4

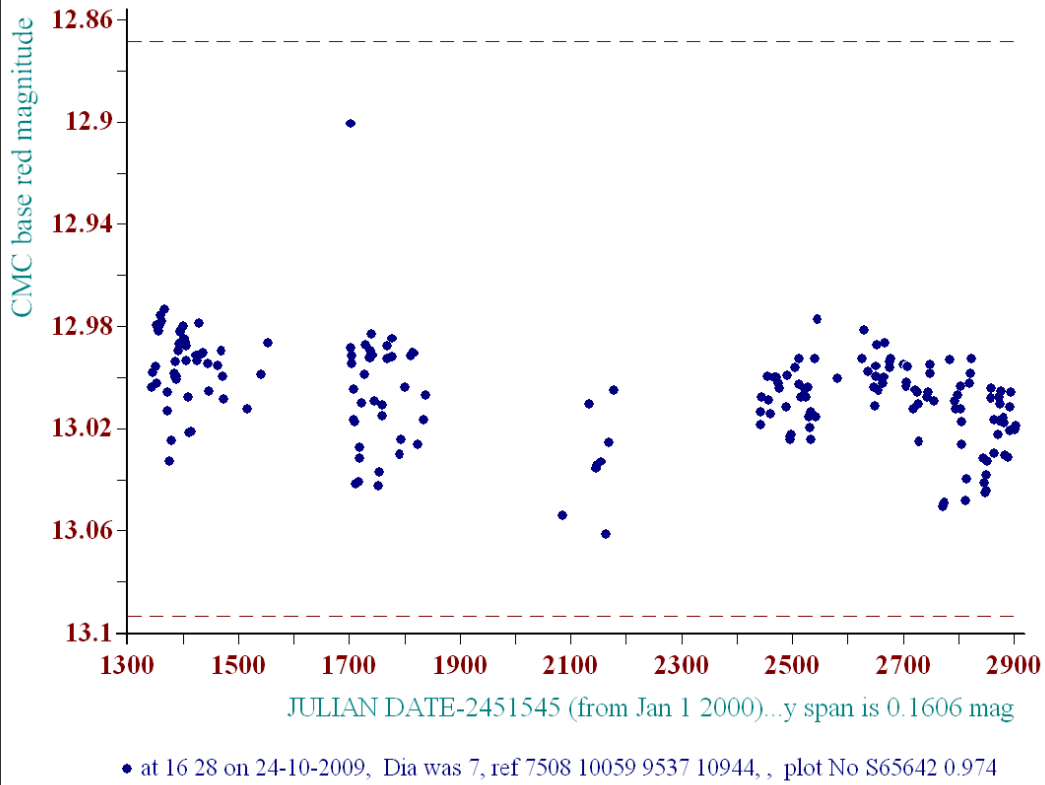
Note: check the data point date 1703 or 4, this needs data from further years

Reminder:

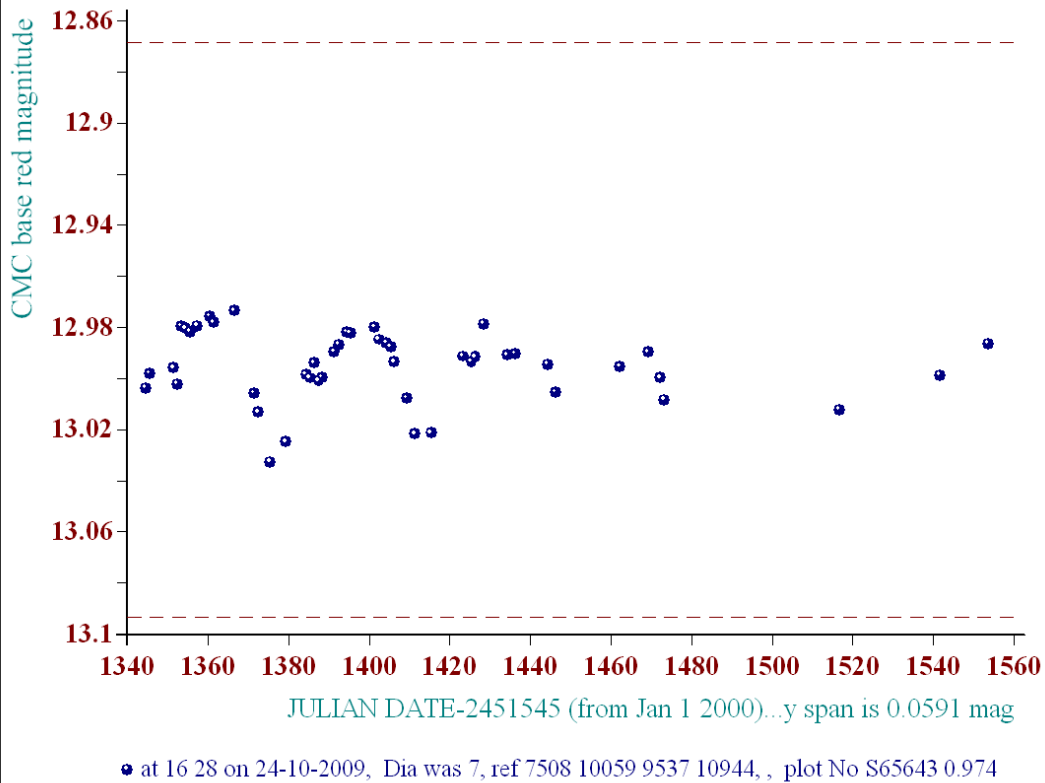
All dates, JD and HJD are from Jan 1st 2000

season 1: dates 1316 to 1553 is 9/8/2003 to 3/4/2004 (a)
season 2: dates 1696 to 1838 is 23/8/2004 to 12/01/2005 (z)
season 3: dates 2085 to 2177 is 16/9/2005 to 17/12/2005 (y)
season 4: dates 2442 to 2755 is 8/9/2006 to 19/7/2007 (w)
season 5: dates 2772 to 2903 is 4/8/2007 to 13/12/2007 (v)
season 6: dates 2930 to 3266 is 9/1/2008 to 10/12/2008 (u)
season 7: dates 3403 to 3539 is 26/4/2009 to 10/9/2009 (t)

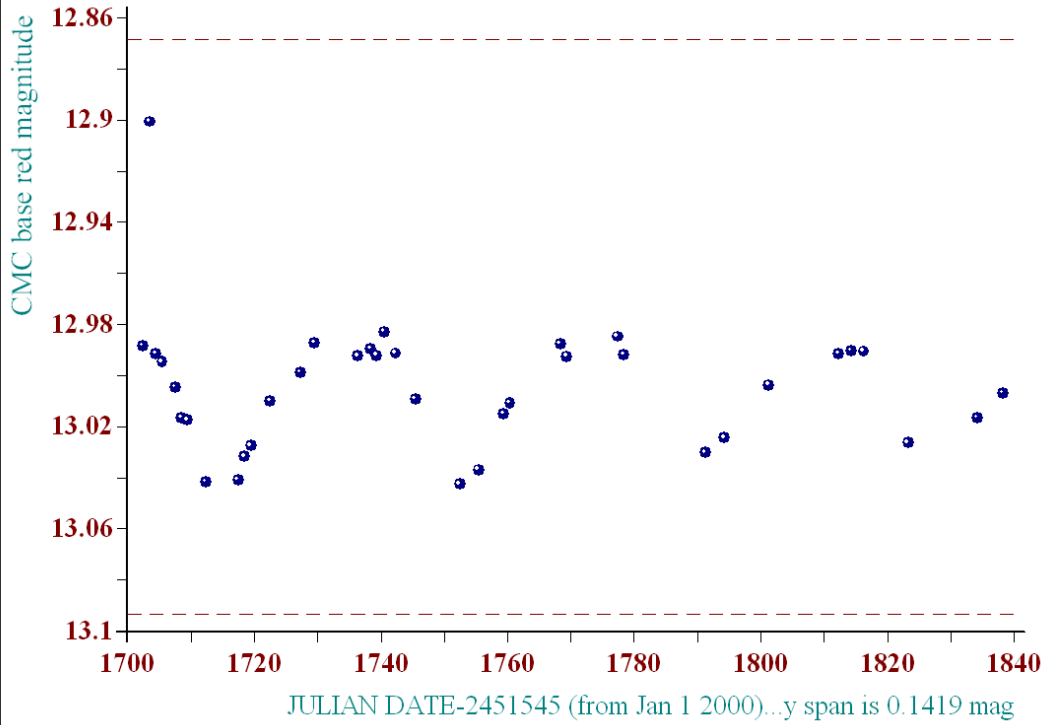
Average per date plot, star a07008



Average per date plot, star a07008

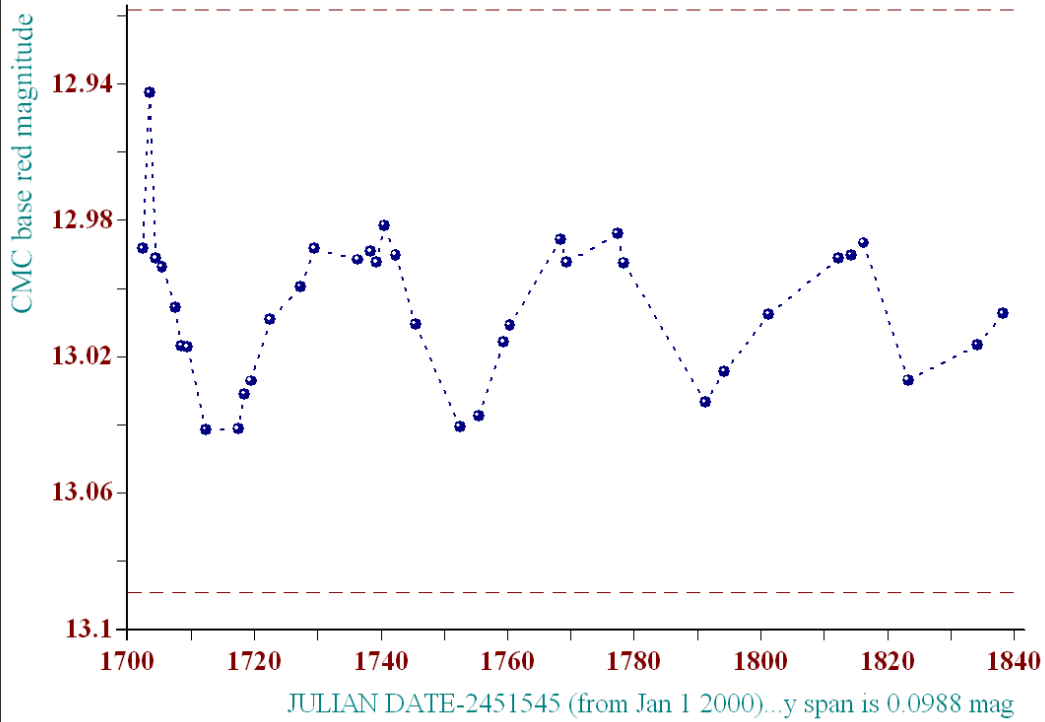


Average per date plot, star a07008



• at 16 29 on 24-10-2009, Dia was 7, ref 7508 10059 9537 10944, , plot No S65644 0.974

Average per date plot, star a07008



- • - at 21 31 on 11-11-2009, Dia was 7, ref 7508 10059 9537 10944, , plot No S69095 1.403