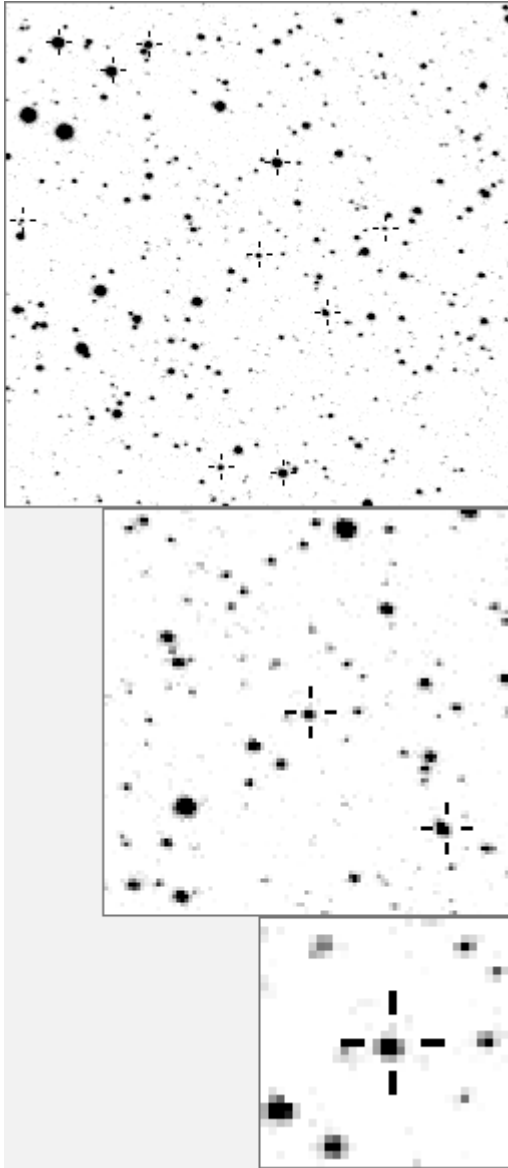


a11690



variable and brighter stars			
.	.	.	O 11690 v
.	e	.	a 89
.	.	f	b 119
b	a	.	c 808
.	.	.	d 890
.	.	.	e 942 v
m	.	.	f 1109 v
.	.	.	g 1441
.	.	.	h 1860 v
.	.	.	i 1892 v
.	.	.	j 5008 v
.	.	.	k 10649 v
.	.	.	l 11953 v
.	.	.	m 20216 v
.	.	.	n 20353 v
-----			
.	.	.	O 11690 v
.	.	.	a 1664
.	.	.	b 1860 v
.	.	.	c 8440
.	.	.	d 9579
.	.	.	e 9912
.	.	.	f 9934
.	.	.	g 10649 v
.	.	.	h 11680
.	.	.	i 12177
.	.	.	j 13715
.	.	.	k 14041
.	.	.	l 14873
.	.	.	m 16327
.	.	.	n 18180

Bitmap sizes are 251, 101 and 31 pixels square, South up. The keys to the right refer to the 1<sup>st</sup> two bitmaps. The numbers in the key are those in my catalogue 'starlistA'. Stars marked with a cross have been found to be variable.

**Data and comments on star a11690**

SWid: a11690 / **USNO id: 1364 402168 / other id:**

Co-ordinates, x,y in image z1051: 2124.3 2012.2

**J2000 sky co-ordinates: 21 8 40.28 +46 28 1.17**

CMC r'magnitude and 2MASS J,H,K magnitudes: 13.787 9.028 7.941 7.561

USNO B1.0 magnitudes, B1,R1,B2,R2,I2: 17.01 12.98 16.57 13.21 10.83

Misc comments :

irreg, mpv, 160mmag in 2004, to 89, m13.34 (u), magr 200mmag, around 20.6d

Comparison reference star(s) co-ordinates:

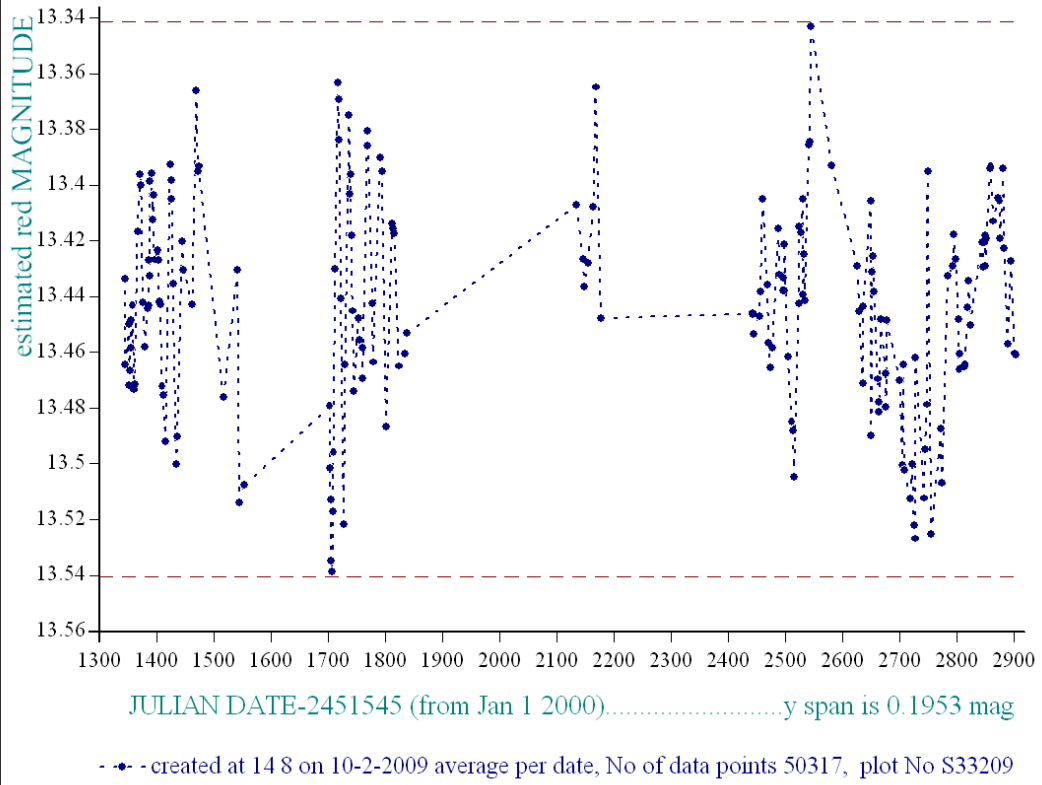
**a00089: 21 8 17.94 +46 25 32.56**

**More year plots needed and CMC references**

Reminder: **All dates, JD and HJD are from Jan 1<sup>st</sup> 2000**

season 1: dates 1316 to 1553 is 9/8/2003 to 3/4/2004	<b>(a)</b>
season 2: dates 1696 to 1838 is 23/8/2004 to 12/01/2005	<b>(z)</b>
season 3: dates 2085 to 2177 is 16/9/2005 to 17/12/2005	<b>(y)</b>
season 4: dates 2442 to 2755 is 8/9/2006 to 19/7/2007	<b>(w)</b>
season 5: dates 2772 to 2903 is 4/8/2007 to 13/12/2007	<b>(v)</b>
season 6: dates 2930 to 3266 is 9/1/2008 to 10/12/2008	<b>(u)</b>
season 7: dates 3403 to 3539 is 26/4/2009 to 10/9/2009	<b>(t)</b>

*star a11690, refstar a00089 dia 8*



*star a11690, refstar a00089 dia 8*

