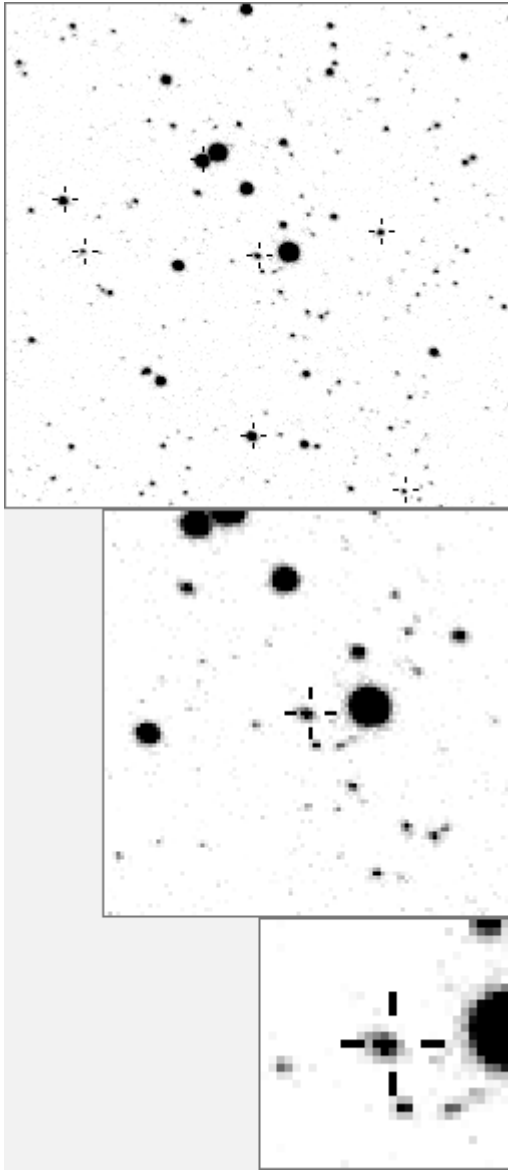


a11873



variable and brighter stars			
. e	O 11873	v	
.	a	27	
. i	b	100	
.	c	656	v
. c b	d	941	
. j d	e	1952	v
. l	f	1982	
. . m . . f . O a	g	2592	
.	h	2908	v
.	i	2958	
. k . . .	j	3943	v
. g	k	4993	
. h	l	9895	v
.	m	18874	v
. n	n	19169	v

. b	O 11873	v	
.	a	27	
. g . . c	b	656	v
.	c	941	
. l . f . . .	d	1982	
. e	e	8720	
.	f	11061	
. O a	g	14231	
. d m	h	22011	
.	i	22308	
. k	j	23508	
. h n . . .	k	25167	
. i	l	26671	
. j	m	28211	
.	n	29196	

Bitmap sizes are 251, 101 and 31 pixels square, South up. The keys to the right refer to the 1st two bitmaps. The numbers in the key are those in my catalogue 'starlistA'. Stars marked with a cross have been found to be variable.

Data and comments on star a11873

SWid: a11873 / **USNO id: 1357 410875 / other id:**
 Co-ordinates, x,y in image z1051: 1389.5 885.8
 J2000 sky co-ordinates: 21 5 53.27 +45 43 8.7
 CMC r'magnitude and 2MASS J,H,K magnitudes: 13.576 11.933 11.417 11.263
 USNO B1.0 magnitudes, B1,R1,B2,R2,I2: 13.95 12.08 14.02 12.38 13.48
 Misc comments :
 new accidental eb, looking at area around 656. To 413 magm 13.11 magr 0.41
 p=6.8931d

Comparison reference star(s) co-ordinates:

a00413: 21 5 56.86 +45 43 3.91

a00027: 21 5 41.66 +45 37 15.19

colour temp estimate: **7019 K**

This is close to the very interesting star a00656

No secondary data caught yet

Need data from 2008 and 2009 and periodograms in all years to check, plus CMC mags

Reminder: **All dates, JD and HJD are from Jan 1st 2000**

season 1: dates 1316 to 1553 is 9/8/2003 to 3/4/2004 **(a)**

season 2: dates 1696 to 1838 is 23/8/2004 to 12/01/2005 **(z)**

season 3: dates 2085 to 2177 is 16/9/2005 to 17/12/2005 **(y)**

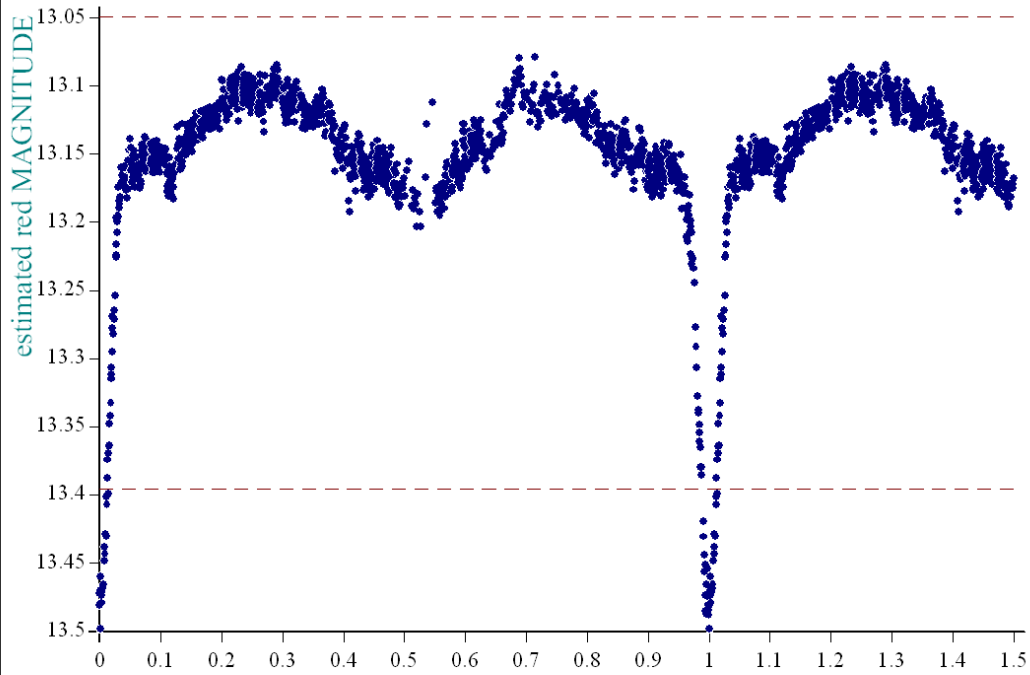
season 4: dates 2442 to 2755 is 8/9/2006 to 19/7/2007 **(w)**

season 5: dates 2772 to 2903 is 4/8/2007 to 13/12/2007 **(v)**

season 6: dates 2930 to 3266 is 9/1/2008 to 10/12/2008 **(u)**

season 7: dates 3403 to 3539 is 26/4/2009 to 10/9/2009 **(t)**

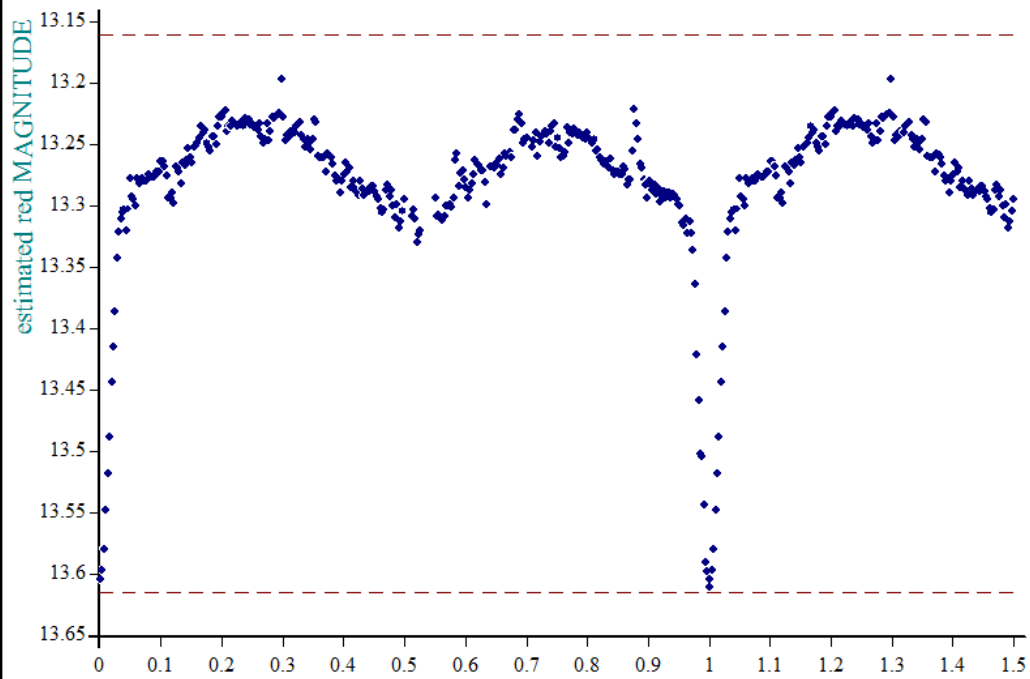
star a11873 dates 1344-2903, dia 8, ref a413, epoch 1227.444, period 6.8931



dates are HJT-2451545.....x axis is phase, overlay blockav is 10

• created at 0 9 on 18-9-2008 phase plot, No of data points 47240, plot No S21339

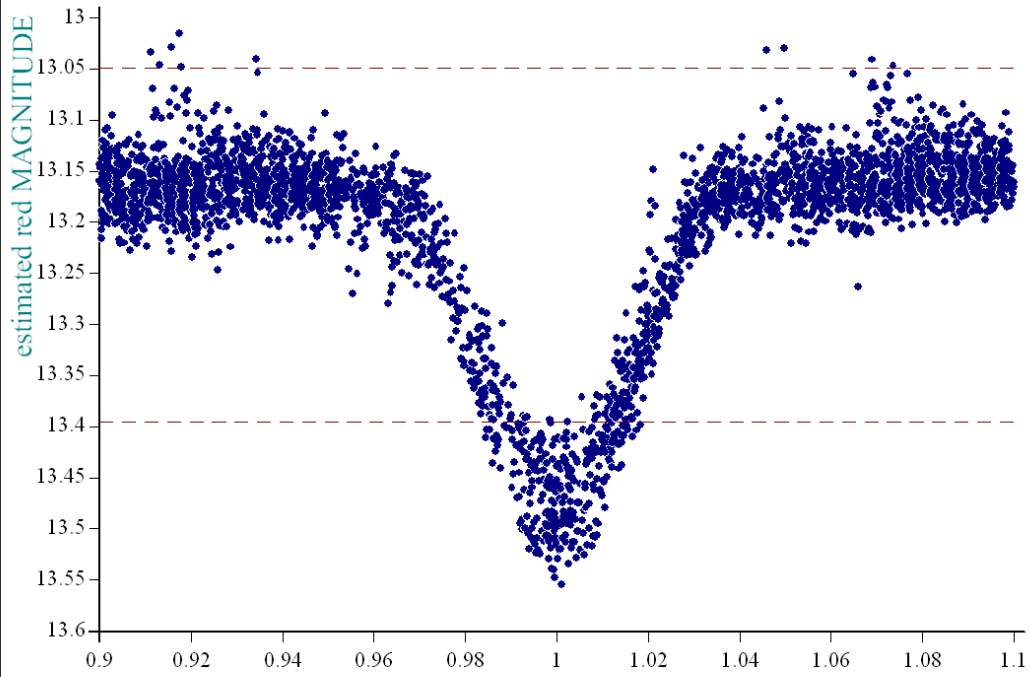
star a11873 in dates 1344-2903, dia 9, ref a27, epoch 1227.444, period 6.8931



dates are HJT-2451545.....x axis is phase, 0.3% phaseaverage, no timeaverage

• created at 12 47 on 1-1-2009 phase plot, No of data points 50376, plot No S30483

star a11873 dates 1344-2903, dia 8, ref a413, epoch 1227.444, period 6.8931



dates are HJT-2451545.....x axis is phase, overlay blockav is 10

• created at 0 10 on 18-9-2008 phase plot, No of data points 47240, plot No S21340