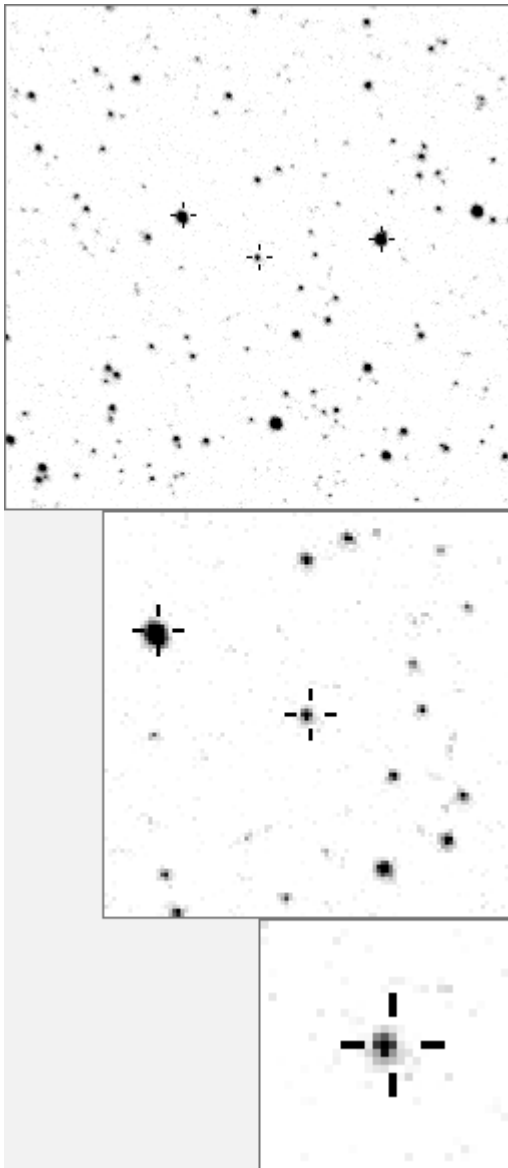


a15183



variable and brighter stars			
.	O	15183	v
.	a	1768	
. . . l j	b	2076	v
.	c	2274	
m	d	2808	v
.	e	5365	
. d b . . . n	f	6219	
. O	g	6565	
.	h	6662	
. i	i	8968	
. g	j	10706	
.	k	10881	
f a . . . k	l	11543	
. h e	m	11593	
.	n	17294	v

.	O	15183	v
. d . f	a	2808	v
.	b	8968	
. l	c	14828	
. a	d	15798	
. m	e	21984	
.	f	22219	
. O . . . h	g	22410	
. n	h	22871	
. i	i	23408	
. e	j	27672	
.	k	27892	
. c	l	30554	
. . k b	m	31154	
. . g j	n	36179	

Bitmap sizes are 251, 101 and 31 pixels square, South up. The keys to the right refer to the 1st two bitmaps. The numbers in the key are those in my catalogue 'starlistA'. Stars marked with a cross have been found to be variable.

Data and comments on star a15183

SWid: a15183 / **USNO id: 1353 416525 / other id:**

Co-ordinates, x,y in image z1051: 1509.5 399.8

J2000 sky co-ordinates: 21 6 21.59 +45 23 58.36

CMC r'magnitude and 2MASS J, H, K magnitudes: 13.745 11.082 10.342 10.107

USNO B1.0 magnitudes, B1, R1, B2, R2, I2: 16.7 13.02 16.03 13.55 13.41

Misc comments :

r1784, 427 Very difficult and noisy. Rov gives 9.627 in all dates and there are strong aliases at the corresponding frequencies of 0.9059 and 1.159. To 1784 magm 13.28 magr about 0.2.

Comparison reference star(s) co-ordinates:

a01784: 21 5 39.4 +45 22 9.03

colour temp estimate: **4079 K**

Not sure about this- more work needed to certain of the period, CMC mags, more plots

Reminder: **All dates, JD and HJD are from Jan 1st 2000**

season 1: dates 1316 to 1553 is 9/8/2003 to 3/4/2004 **(a)**

season 2: dates 1696 to 1838 is 23/8/2004 to 12/01/2005 **(z)**

season 3: dates 2085 to 2177 is 16/9/2005 to 17/12/2005 **(y)**

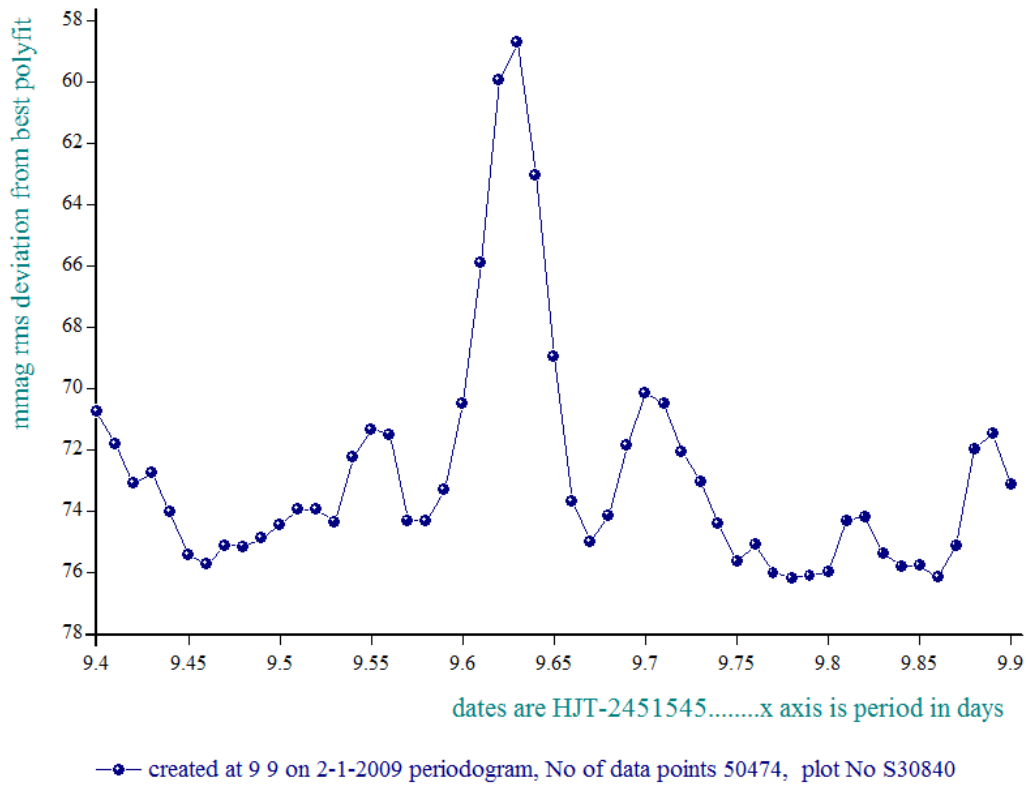
season 4: dates 2442 to 2755 is 8/9/2006 to 19/7/2007 **(w)**

season 5: dates 2772 to 2903 is 4/8/2007 to 13/12/2007 **(v)**

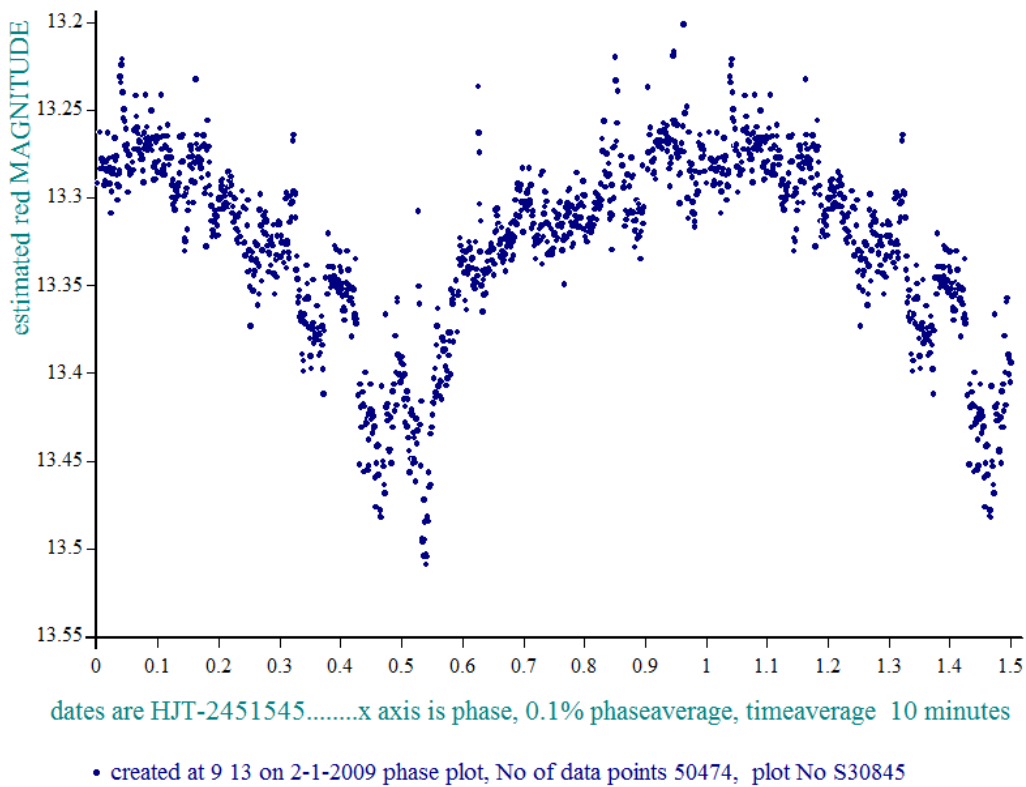
season 6: dates 2930 to 3266 is 9/1/2008 to 10/12/2008 **(u)**

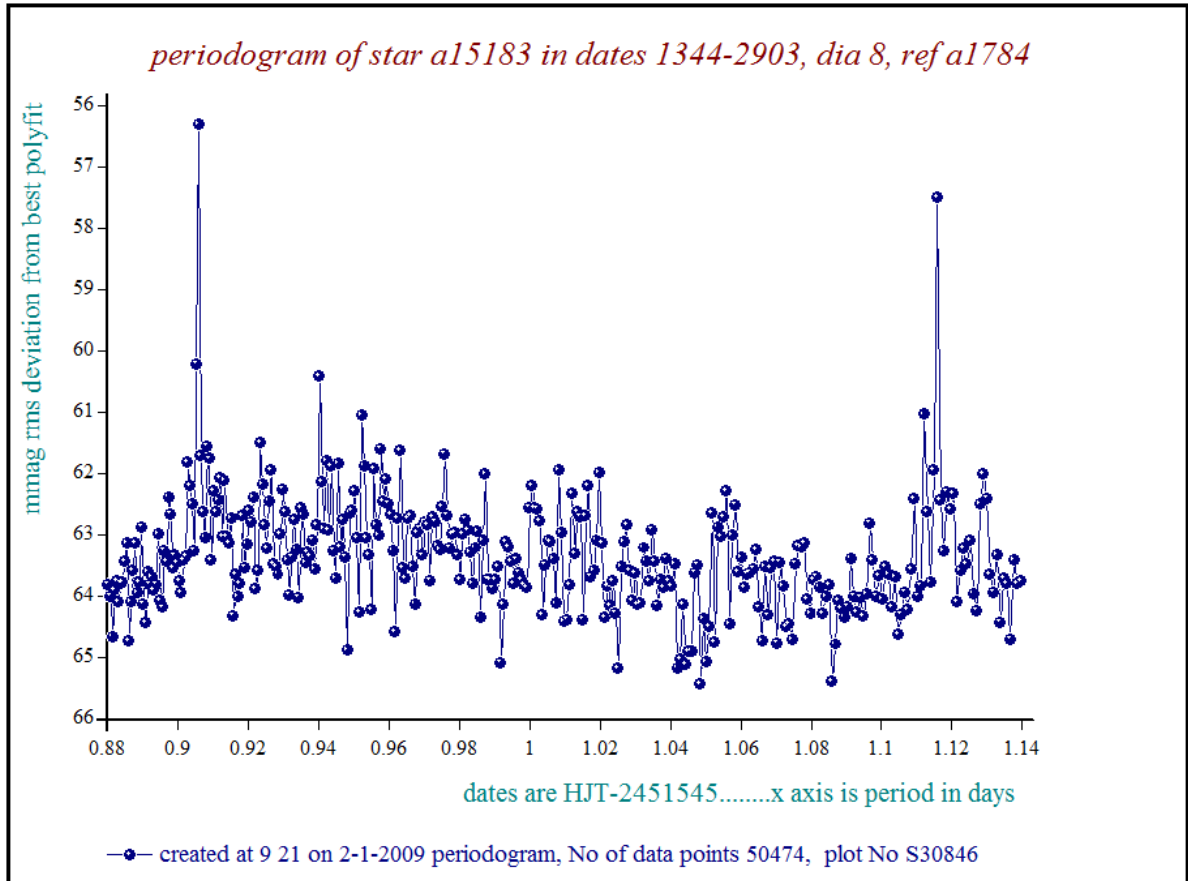
season 7: dates 3403 to 3539 is 26/4/2009 to 10/9/2009 **(t)**

periodogram of star a15183 in dates 1344-2903, dia 8, ref a1784



star a15183 in dates 1344-2903, dia 8, ref a1784, epoch 1700, period 9.627





This star has strong aliases