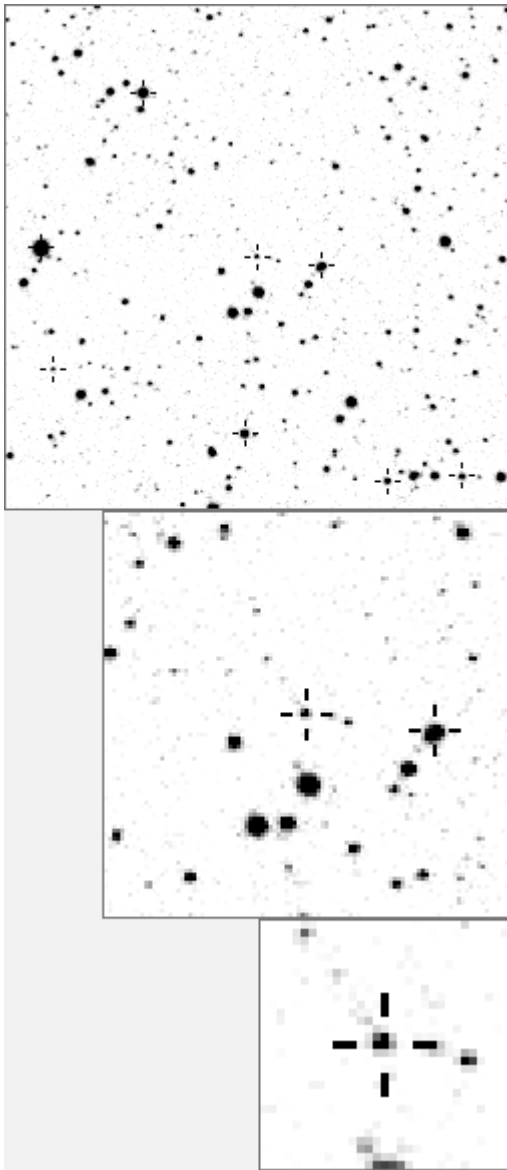


a20007



variables & brighter stars		
.	.	O 20007
.	l	a 102v
.	d	b 1111
.	.	c 1124
.	.	d 1195v
.	m	e 1202
.	.	f 1549
.	.	c g 2153
.	a	O i h 2234v
j	.	e i 3073v
.	.	f j 3357
.	.	k 3487v
.	p	l 4133
.	g	b m 4151
.	.	k n 8105v
.	.	o h o 8722v
.	.	n p 20926v
-----		
.	m	g O 20007
.	h	a 1202
.	.	b 1549
.	.	c 3073v
.	p	d 5173
i	.	e 5539
.	.	f 7783
.	.	g 8663
.	.	O h 11426
.	f	c i 12124
.	.	e j 14065
.	.	a k 15664
.	.	d l 16996
n	b	k m 19562
.	.	n 20269
.	j	o l o 20344
.	.	p 21052

Bitmap sizes are 251, 101 and 31 pixels square, South up. The keys to the right refer to the 1<sup>st</sup> two bitmaps. The numbers in the key are those in my catalogue 'starlistA'. Stars marked with a cross have been found to be variable.

**Data and comments on star a20007**

SWid: a20007 / **USNO id: 1369 441438 / other id:**

Co-ordinates, x,y in image z1051: 2578.1 2766.1

**J2000 sky co-ordinates: 21 10 25.83 +46 57 56.02**

CMC r'magnitude and 2MASS J, H, K magnitudes: 14.468 11.757 11.057 10.897

USNO B1.0 magnitudes, B1, R1, B2, R2, I2: 15.93 13.17 15.99 13.79 13.23

Misc comments :

New lpv, slow, 0.36mag so far to 7783 14.35 14.05

Comparison reference star(s) co-ordinates:

**a07783: 21 10 26.07 +46 58 38.32**

**a01202: 21 10 21.77 +46 58 13.71**

**Need 2008 and 9 data**

Reminder: **All dates, JD and HJD are from Jan 1<sup>st</sup> 2000**

season 1: dates 1316 to 1553 is 9/8/2003 to 3/4/2004 (a)

season 2: dates 1696 to 1838 is 23/8/2004 to 12/01/2005 (z)

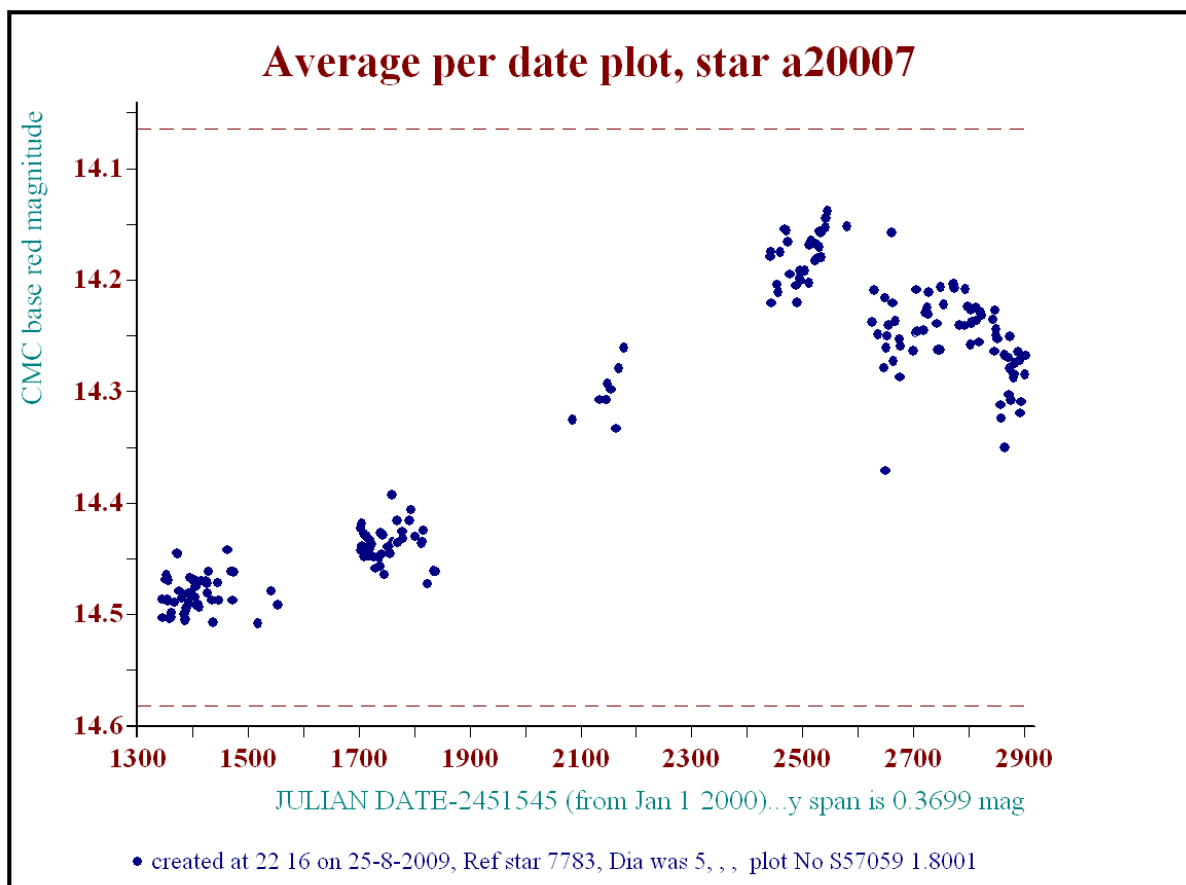
season 3: dates 2085 to 2177 is 16/9/2005 to 17/12/2005 (y)

season 4: dates 2442 to 2755 is 8/9/2006 to 19/7/2007 (w)

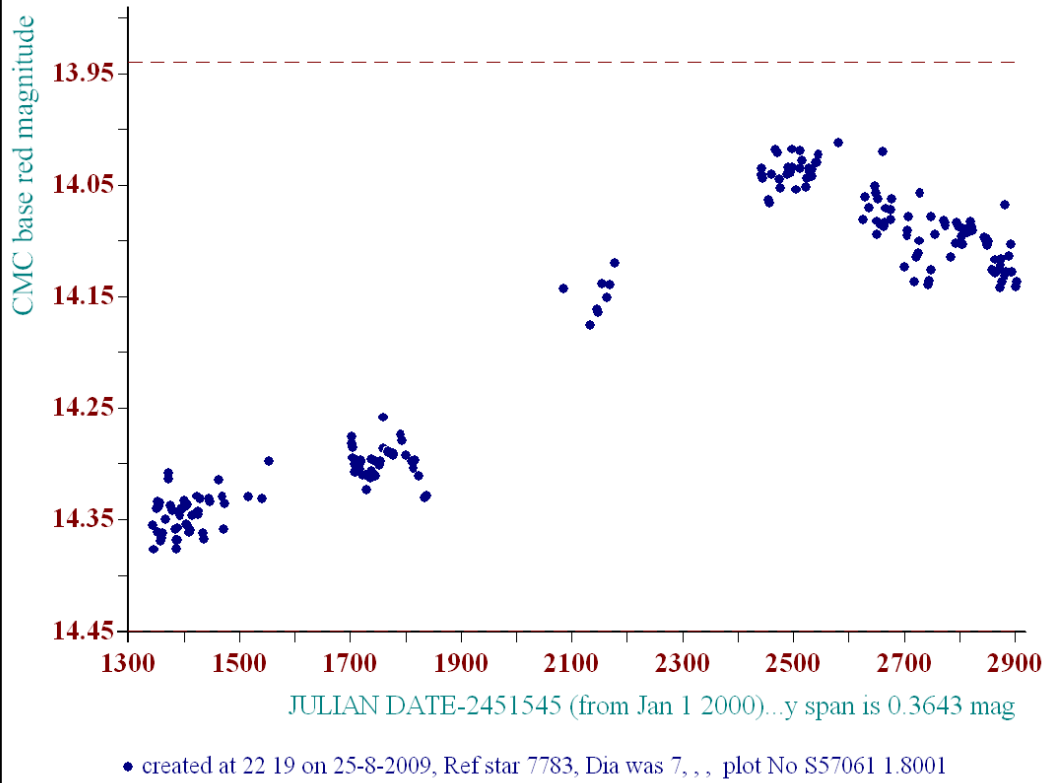
season 5: dates 2772 to 2903 is 4/8/2007 to 13/12/2007 (v)

season 6: dates 2930 to 3266 is 9/1/2008 to 10/12/2008 (u)

season 7: dates 3403 to 3539 is 26/4/2009 to 10/9/2009 (t)



### Average per date plot, star a20007



### Average per date plot, star a20007

