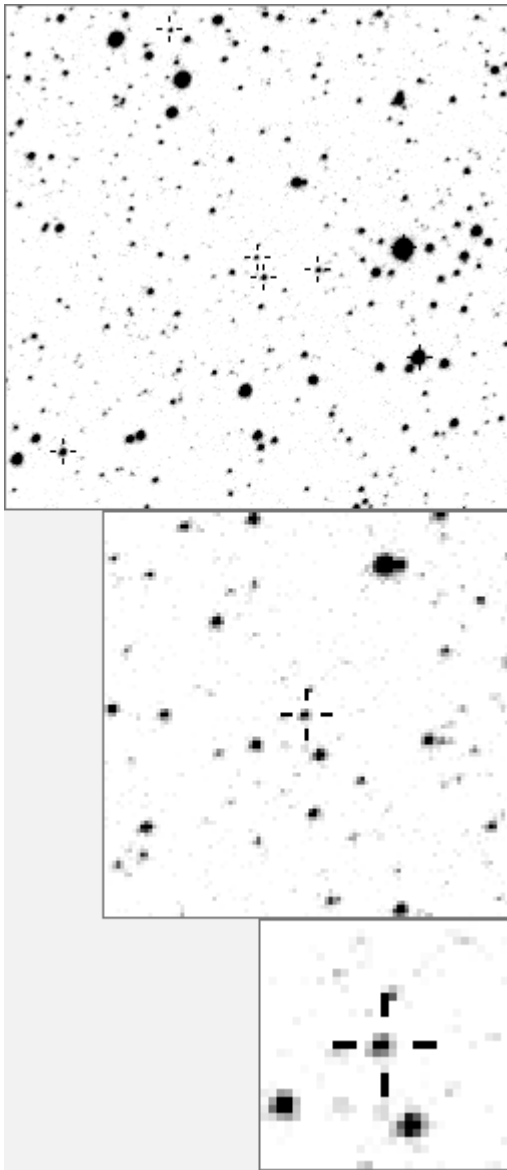


a20250



variable and brighter stars			
. . . . . c n . . . . .	O 20250	v	
. . . . .	a	2	v
. . . . . b . . . . .	b	170	
. . . . . g . . . . .	c	254	
. . . . .	d	380	v
. . . . . i . . . . .	e	766	
. . . . . . . . . . . h	f	1362	
. . . . . O l a . . .	g	1484	
. . . . . k . . . . .	h	1499	
. . . . . . . . . . .	i	2083	
. . . . . m . . . . . d . .	j	7083	v
. . . . . e . . . . .	k	14100	v
. . . . . . . . . . .	l	14593	v
f j . . . . .	m	18929	v
. . . . . . . . . . .	n	20264	v
-----			
. . . . . n e . . . . .	O 20250	v	
. . . . . . . . . . . a b . . . . .	a	2083	
. . . . . . . . . . .	b	8693	
. . . . . . . . . . .	c	11070	
. . . . . i . . . . .	d	14100	v
. . . . . . . . . . .	e	14426	
. . . . . . . . . . .	f	14593	v
k l . . . . . O . . . . .	g	15202	
. . . . . g . . . . . f . .	h	15563	
. . . . . . . . . . . d . . . . .	i	16691	
. . . . . . . . . . .	j	17658	
. h . . . . . j . . . . . m	k	19130	
. . . . . . . . . . .	l	19155	
. . . . . . . . . . .	m	20881	
. . . . . . . . . . . c . . . . .	n	24119	

Bitmap sizes are 251, 101 and 31 pixels square, South up. The keys to the right refer to the 1<sup>st</sup> two bitmaps. The numbers in the key are those in my catalogue 'starlistA'. Stars marked with a cross have been found to be variable.

**Data and comments on star a20250**

SWid: a20250 / **USNO id: 1371 475286 / other id:**

Co-ordinates, x,y in image z1051: 1381.2 3088.7

**J2000 sky co-ordinates: 21 5 46.55 +47 10 34.74**

CMC r'magnitude and 2MASS J, H, K magnitudes: 14.364 13.259 13.089 12.988

USNO B1.0 magnitudes, B1, R1, B2, R2, I2: 15.44 13.85 15.15 14.31 13.52

Misc comments :

oct09 eb, mins at 1388.287 1745 .556 and 1760.470 suggest p=14.886 or submultiple, m14.2, mr 0.15

Comparison reference star(s) co-ordinates:

**a19889: 21 5 35.32 +47 10 29.17**

**a20795: 21 5 35.52 +47 8 16.37**

**a19130: 21 5 18.07 +47 8 3.91**

**a20830: 21 5 44.79 +47 7 13.14**

More work to clarify the mins, noise

Reminder: **All dates, JD and HJD are from Jan 1<sup>st</sup> 2000**

season 1: dates 1316 to 1553 is 9/8/2003 to 3/4/2004 **(a)**

season 2: dates 1696 to 1838 is 23/8/2004 to 12/01/2005 **(z)**

season 3: dates 2085 to 2177 is 16/9/2005 to 17/12/2005 **(y)**

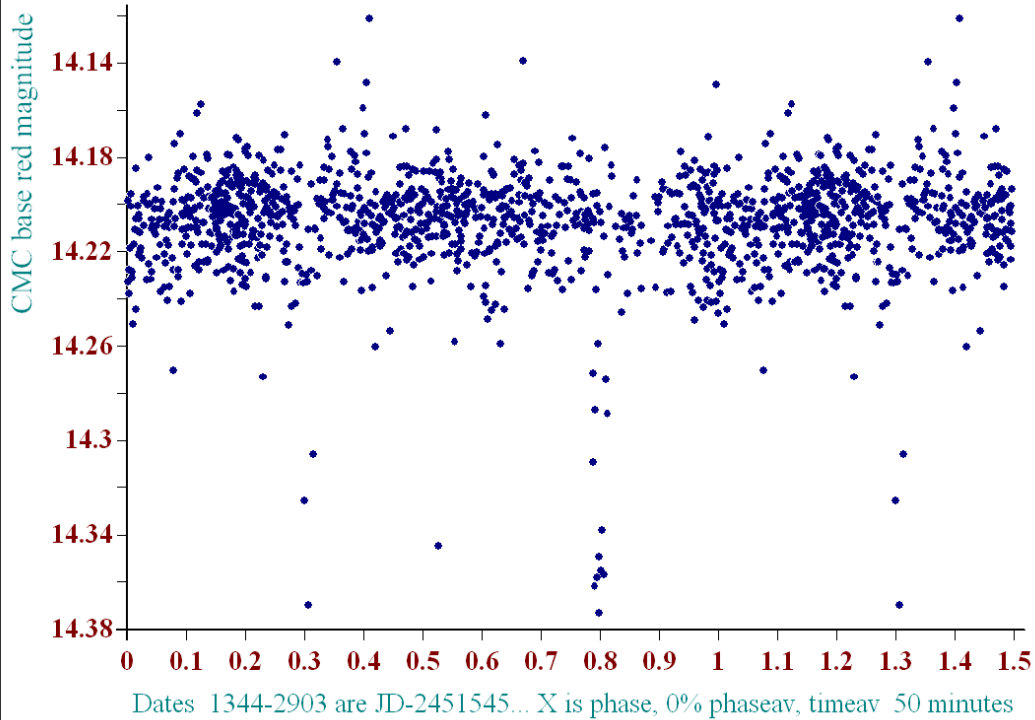
season 4: dates 2442 to 2755 is 8/9/2006 to 19/7/2007 **(w)**

season 5: dates 2772 to 2903 is 4/8/2007 to 13/12/2007 **(v)**

season 6: dates 2930 to 3266 is 9/1/2008 to 10/12/2008 **(u)**

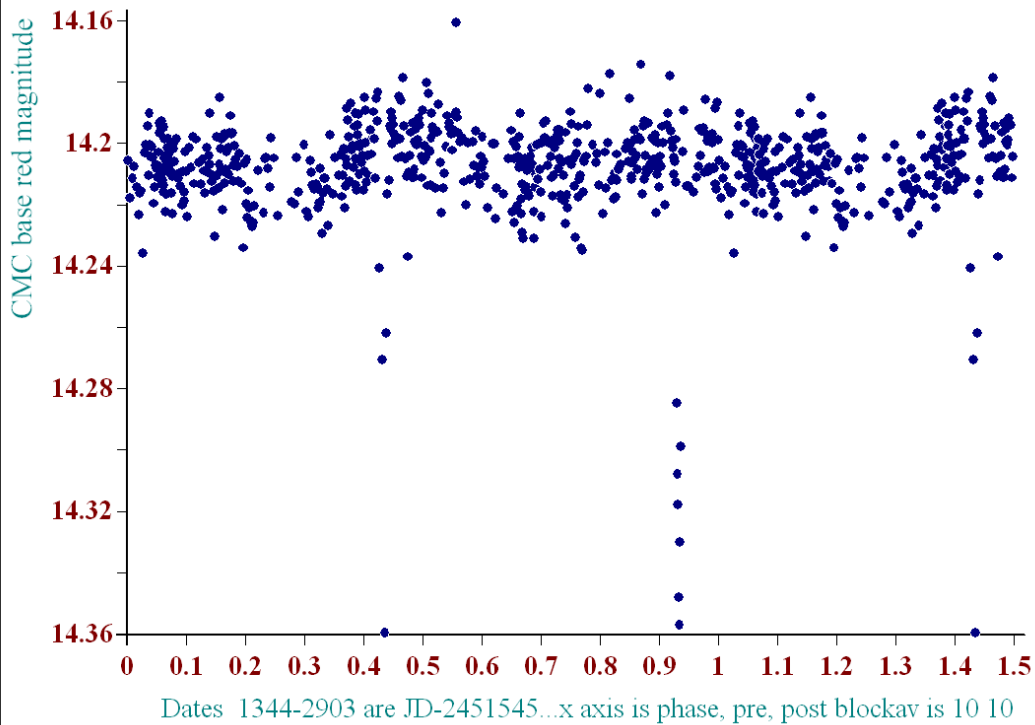
season 7: dates 3403 to 3539 is 26/4/2009 to 10/9/2009 **(t)**

### Phase Plot, Star a20250 period 4.962d

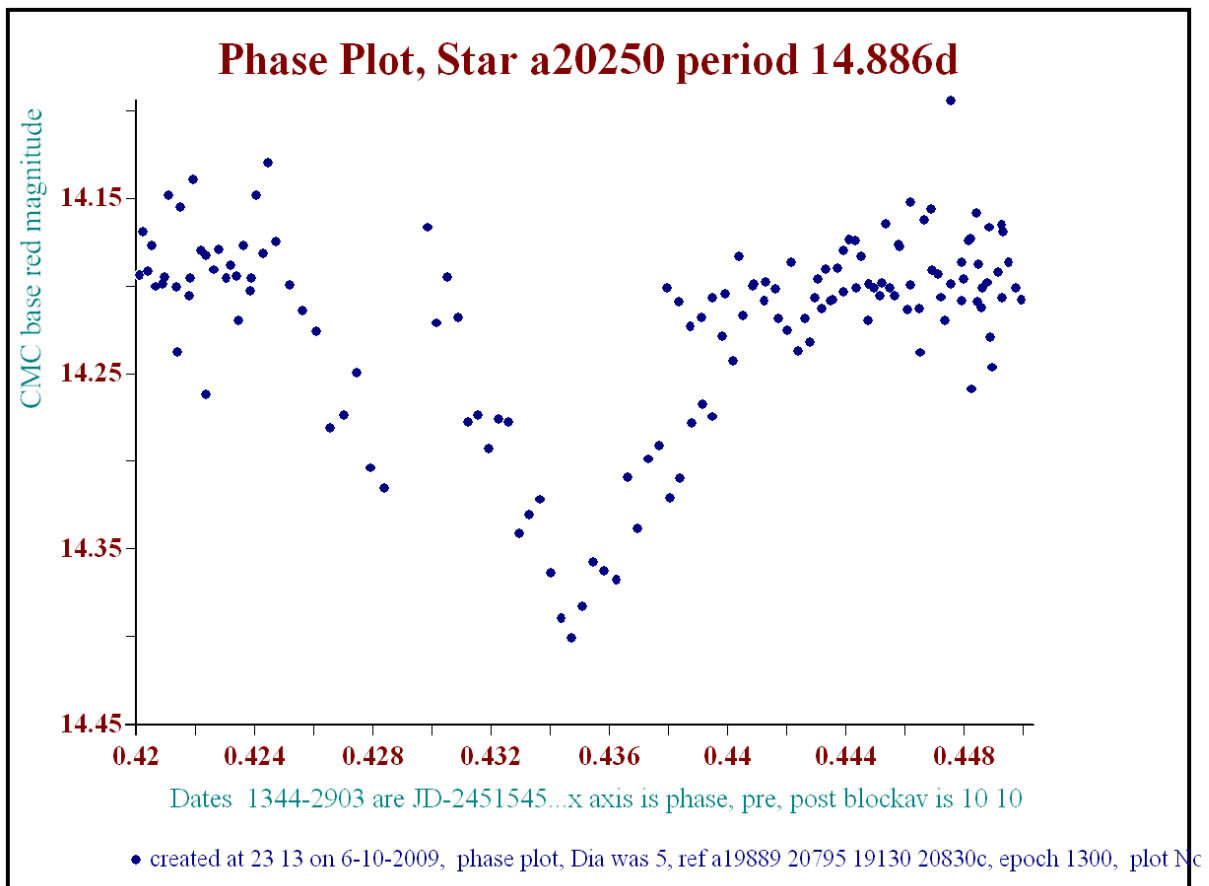
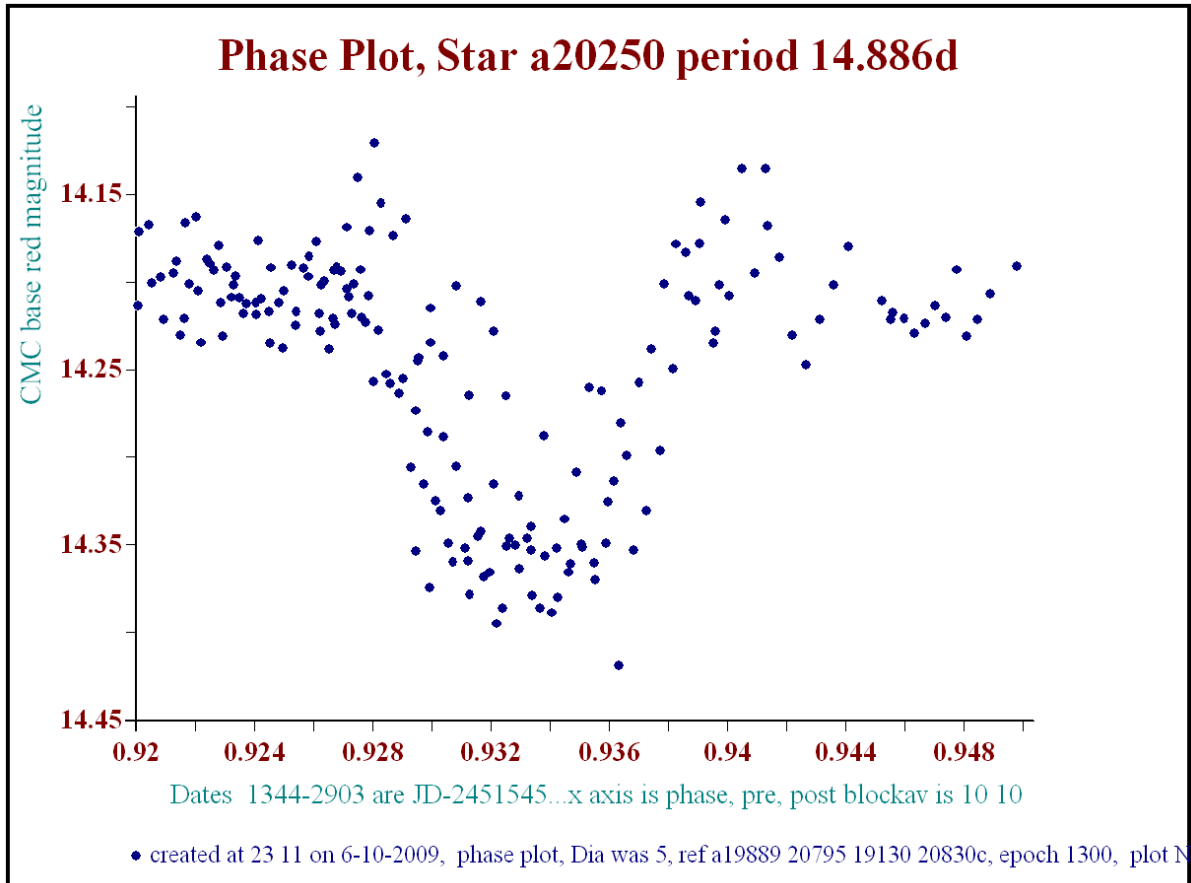


• created at 21 57 on 6-10-2009, phase plot, Dia was 5, ref a19889 20795 19130 20830c, epoch 1300, plot Nc

### Phase Plot, Star a20250 period 14.886d



• created at 23 11 on 6-10-2009, phase plot, Dia was 5, ref a19889 20795 19130 20830c, epoch 1300, plot Nc



Or, what about half that, the mins are v similar depth

