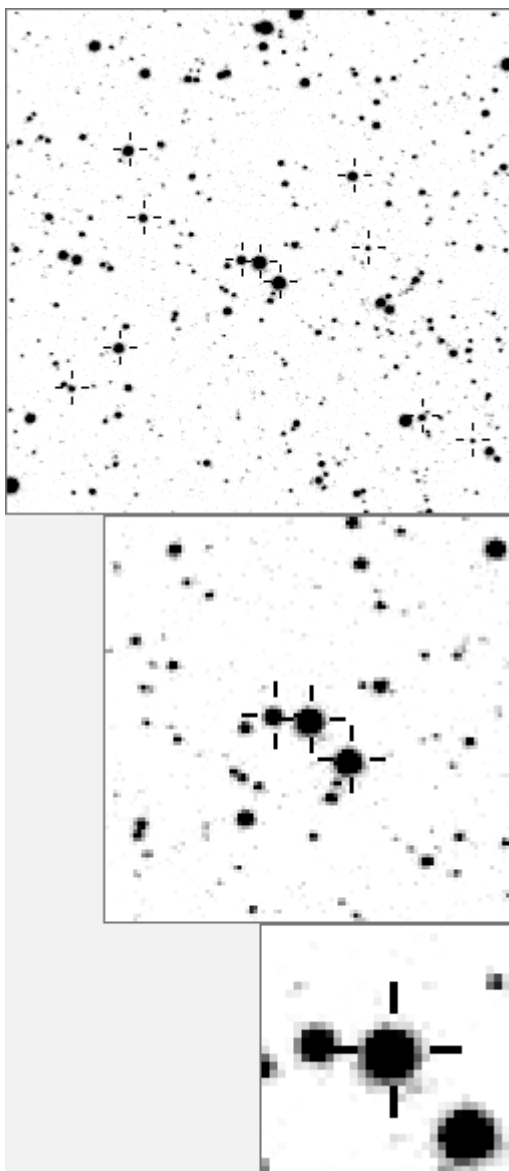


a00363=V577 Cyg



variables& brighter stars			
..... b .....	O	363	v
..... .....	a	83	
..... .....	b	293	
..... .....	c	340	v
... d ... f ...	d	1156	v
..... .....	e	1272	v
... h ...	f	1782	v
... g O ... m ...	g	2223	v
... c ...	h	3238	v
..... .....	i	3286	v
... e ...	j	6358	v
... k ...	k	8526	v
..... .....	l	10311	v
..... .....	m	15476	v
a .....	n	19576	v
-----			
..... k .....	O	363	v
... f ... g ... b	a	340	v
..... .....	b	1782	v
..... .....	c	2223	v
..... .....	d	3230	
... n ...	e	7112	
..... .....	f	8307	
... i c O ...	g	8463	
..... .....	h	10147	
..... .....	i	10446	
... j ...	j	10588	
... m ... d ...	k	10685	
..... .....	l	11246	
..... .....	m	12407	
..... .....	n	15496	

Bitmap sizes are 251, 101 and 31 pixels square, South up.  
 The keys to the right refer to the 1<sup>st</sup> two bitmaps. The numbers in the key are those in my catalogue 'starlistA'

Data and comments on star a00363

SWid: a00363 / **USNO id: 1367 419620 / other id: V577 Cyg (SRa)**

Co-ordinates, x,y in image z1051: 2468.3 2423.1

J2000 sky co-ordinates: **21 10 0.03 +46 44 20.19**

CMC r'magnitude and 2MASS J,H,K magnitudes: 9.974 5.647 0 0

USNO B1.0 magnitudes, B1,R1,B2,R2,I2: 16.09 9.92 14.05 8.51 7.5

Misc comments :

lovely lpv, this is V577. V close ref 340 is also var but there is 83, 85 and 274.

To 83 magr is 0.68 so far, magm 9.55. It's been going generally up since 2003 but may be levelling off now.

GCVS entry: V577 1 21 09 59.7 46 44 22 363

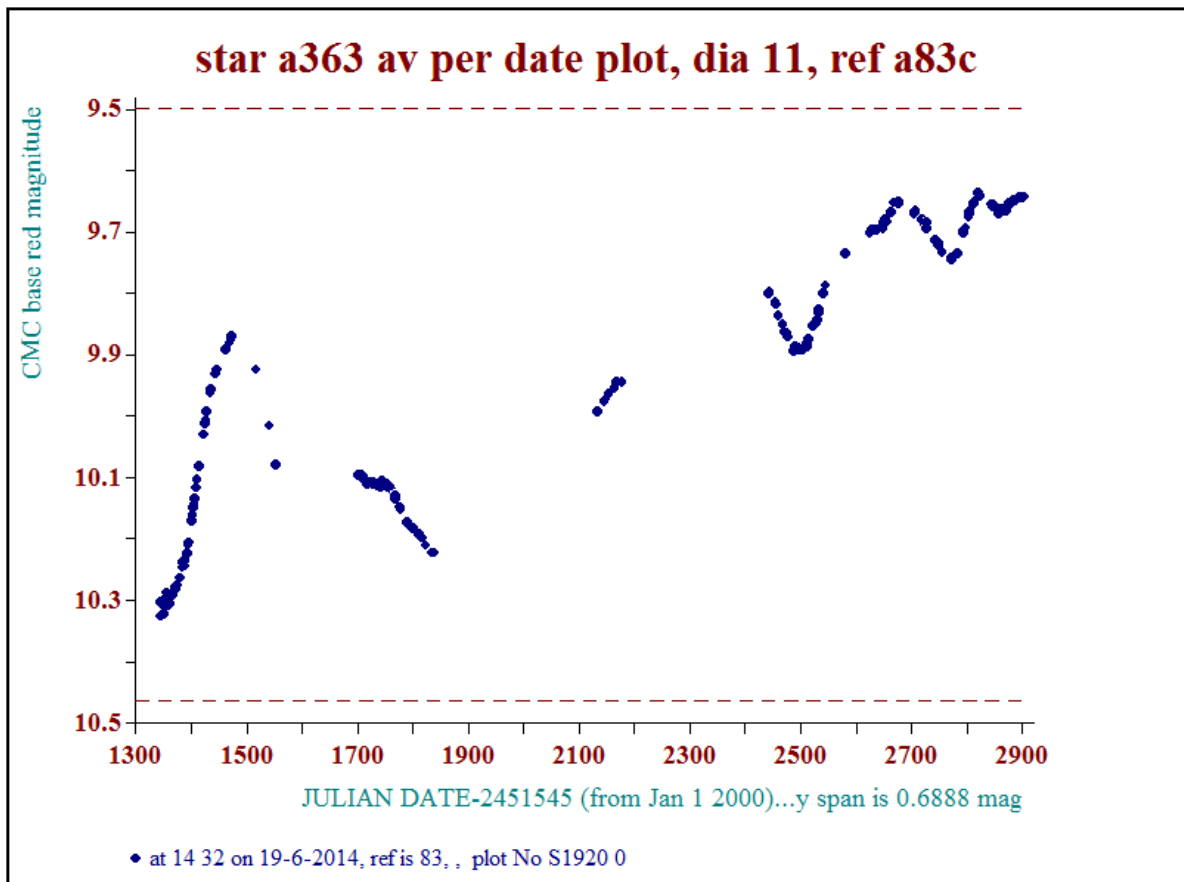
Comparison reference star(s) co-ordinates:

a00083: **21 9 31.22 +46 48 45.75**

Reminder:

season 1: dates 1316 to 1553 is 9/8/2003 to 3/4/2004	(a)
season 2: dates 1696 to 1838 is 23/8/2004 to 12/01/2005	(z)
season 3: dates 2085 to 2177 is 16/9/2005 to 17/12/2005	(y)
season 4: dates 2442 to 2755 is 8/9/2006 to 19/7/2007	(w)
season 5: dates 2772 to 2903 is 4/8/2007 to 13/12/2007	(v)
season 6: dates 2930 to 3266 is 9/1/2008 to 10/12/2008	(u)
season 7: dates 3403 to 3539 is 26/4/2009 to 10/9/2009	(t)

This report needs 2008 and 2009 data



This star a00363 which is V577 Cyg is in a field with a lot of other variable stars found during this work, as the image and key on the first page illustrates. The top image covers an area of only 10.0 arc-min square but has (at least) 12 more variables there:

Star 00340 is an irregular oscillator with a period of 11.6 days and max amplitude of 0.2mag.

Star 06358 is very interesting showing patterns of outbursts, spaced around 35 days, amplitudes up to 0.3 magnitude so far, base widths about 18 days, see file on that star for plots.

Star 01272 varies randomly during a night some 3-6 times more than stars of a similar brightness in the same area.

Star 01156 suffers irregular fades, only by 20-30 mmags but quite definite. Three were recorded in 2004.

Star 08526 is an irregular short period variable, always moving about by up to 100mmags ( two to three times as much movement as a non-variable star of this brightness would show) but with no regularity.

Star 03238 is an eclipsing binary, semi detached Algol type with period 2.77384 days, primary minimum 0.68mag, secondary 0.12 mag.

