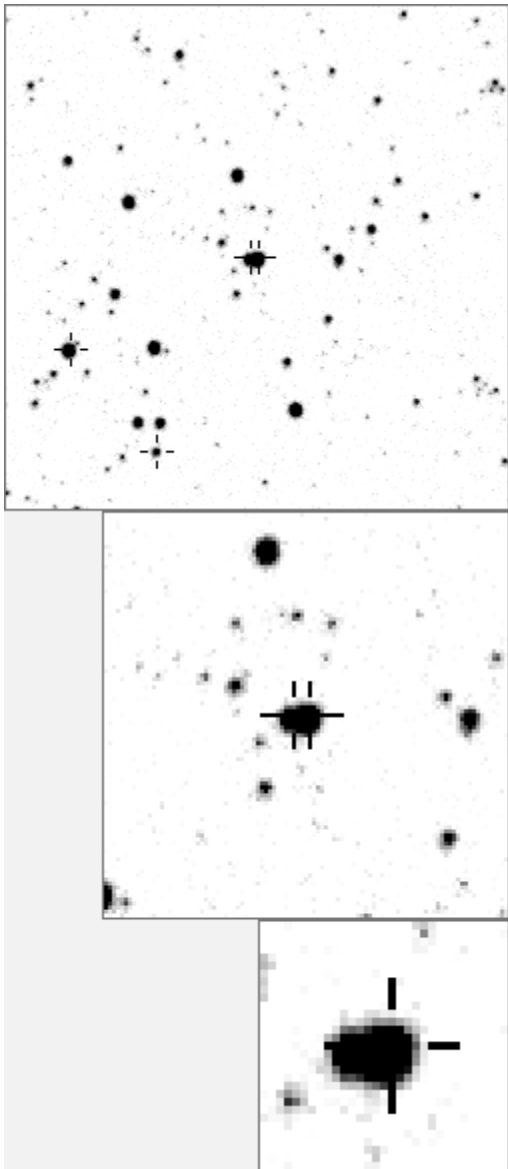


a00569



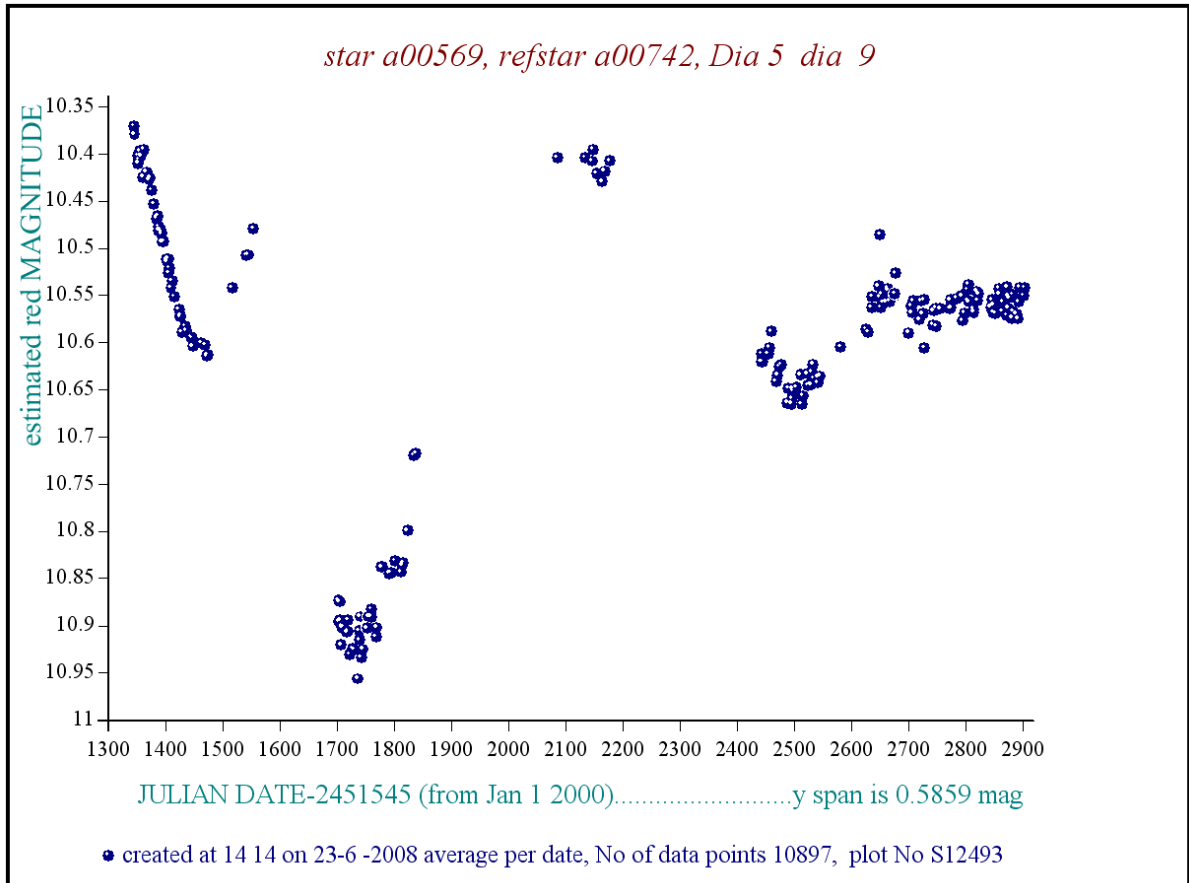
Variable and brighter stars	
.	O 569 v
. m	a 1022
.	b 1067 v
.	c 1474
. l	d 1649
. d . . e	e 1841
. k	f 2082 v
. f . j	g 3388
. i	h 3625
.	i 4169
. b . . c	j 4756
.	k 5966
. g h a	l 6147
. n	m 6502
.	n 7230 v

.	O 569 v
. a	a 1841
.	b 2082 v
. h	c 4756
. i l	d 9848
. n	e 11980
. j e g	f 12440
. b O c	g 17057
. k	h 21805
. .	i 24093
. f	j 24870
. .	k 25870
. .	l 27905
. .	m 28093
m	n 29628

Bitmap sizes are 251, 101 and 31 pixels square, South up. The keys to the right refer to the 1st two bitmaps. The numbers in the key are those in my catalogue 'starlistA'

Data and comments on star a00569

SWid: a00569 / **USNO id: 3588 1166901 / other id: TYC 3588-11669-1**
 Co-ordinates, x,y in image z1051: 2048.3 206.1
 J2000 sky co-ordinates: **21 8 23.34 +45 16 25.14**
 CMC r'magnitude and 2MASS J,H,K magnitudes: 10.523 9.409 9.088 8.721
 USNO B1.0 magnitudes, B1,R1,B2,R2,I2: 11.56 11.09 11.4 11.07 10.93
 Misc comments :
 lpv, need to check effect of meld with 2082. Done, it's 569 that's variable.
 The magr goes up from 0.464 at dia 17 to 0.586 at dia 5, ref 742
 Magm is 10.15 20a p93
Comparison reference star(s) co-ordinates:
a00742: 21 8 53.88 +45 22 41.13



Reminder: **All dates, JD and HJD are from Jan 1st 2000**

- season 1: dates 1316 to 1553 is 9/8/2003 to 3/4/2004 **(a)**
- season 2: dates 1696 to 1838 is 23/8/2004 to 12/01/2005 **(z)**
- season 3: dates 2085 to 2177 is 16/9/2005 to 17/12/2005 **(y)**
- season 4: dates 2442 to 2755 is 8/9/2006 to 19/7/2007 **(w)**
- season 5: dates 2772 to 2903 is 4/8/2007 to 13/12/2007 **(v)**
- season 6: dates 2930 to 3266 is 9/1/2008 to 10/12/2008 **(u)**
- season 7: dates 3403 to 3539 is 26/4/2009 to 10/9/2009 **(t)**

a00569 is in the middle of the bitmaps, its fainter companion is star a002082, enclosing both gives a span of 0.49 mags suggesting that 2082 is not variable and is just diluting 569.

Two more years of data to be added