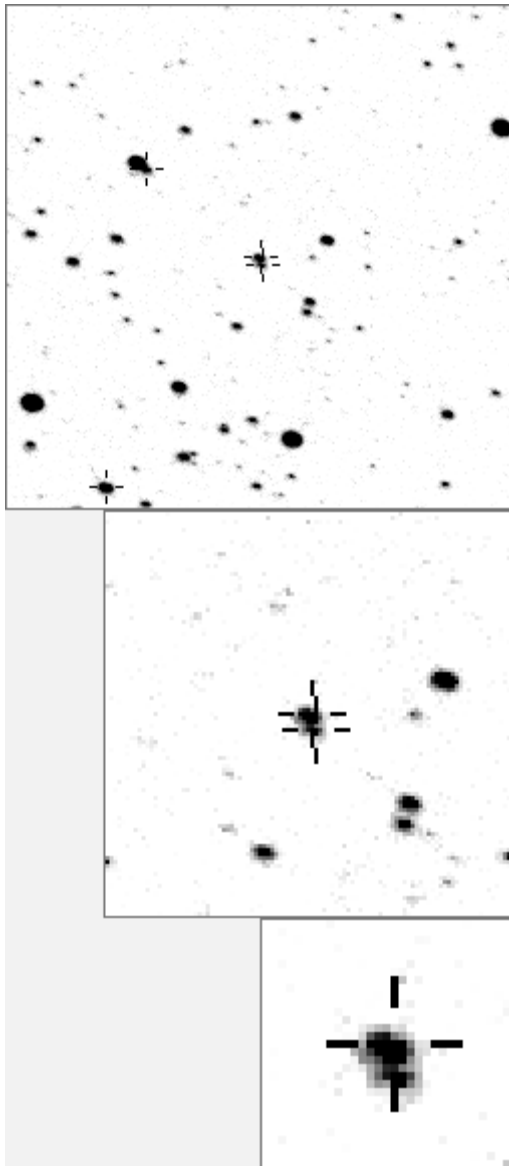


a01055 —V407 Cyg



variables & brighter stars			
.	O	1055 v
.	a	157
.	b	259 v
.	b	c 296
.	d m	d	826
.	e	1787
.	k g	f	2111 v
.	i n	g	3095
. l	h	4365
.	i	4456
.	j	4526
a	e	k	5387
. c j .	l	5803
. h	m	6510 v
.	f	n	9079 v

.	O	1055 v
.	a	3095
. m	b	5803
. k	c	7844
.	d	9079 v
.	e	9140
.	f	21760
.	a	
. O g	g	22764
. d	h	31366
.	i	32126
.	j	38735
. b	k	39437
.	i e j	l	39439
. c l f	m	43314
.	h	
. n	n	43315

Bitmap sizes are 101 and 31 pixels square, South up. The keys to the right refers to the top bitmap. The numbers in the key are those in my catalogue 'starlistA'. Stars marked with a cross have been found to be variable.

Data and comments on star a01055
 SWid: a01055 / **USNO id: 1357 406961 / other id: V407 Cyg**
 Co-ordinates, x,y in image z1051: 404.5 983.9
J2000 sky co-ordinates: 21 2 9.8 +45 46 32.56
 CMC r'magnitude and 2MASS J,H,K magnitudes: 12.463 5.704 4.357 0
 USNO B1.0 magnitudes, B1,R1,B2,R2,I2: 0 9.96 14.79 12.02 8.69
 Misc comments :
 Lpv, has close companion. To 208 and 33 box, magm 9.5, magr 4.72

GCVS entry: V407 1 21 02 11.6 45 46 28 1055

Comparison reference star(s) co-ordinates:

a00208: 21 2 52.43 +46 1 17.17

Don't think my possible variability of 9079 right adjacent is real (d in bm2), see plot below

Reminder:

season 1: dates 1316 to 1553 is 9/8/2003 to 3/4/2004	(a)
season 2: dates 1696 to 1838 is 23/8/2004 to 12/01/2005	(z)
season 3: dates 2085 to 2177 is 16/9/2005 to 17/12/2005	(y)
season 4: dates 2442 to 2755 is 8/9/2006 to 19/7/2007	(w)
season 5: dates 2772 to 2903 is 4/8/2007 to 13/12/2007	(v)
season 6: dates 2930 to 3266 is 9/1/2008 to 10/12/2008	(u)
season 7: dates 3403 to 3539 is 26/4/2009 to 10/9/2009	(t)

Plots below are with a small diameter of 3 by 3 pixels so mags are in error- more work needed.

Also, Guide shows V407 as Vmag max 13.3 and the star adjacent is up and left (SE) of V407, with J-K of 2.52 and mag 11.38. The images left are from date 1705 (Sept 1st 2004) so near to the first min in the 1st plot below. So according to Guide my 3 by 3 sample is not on V407 at all, which clearly it is- something is wrong! I'll do some pixel by pixel measurements.

